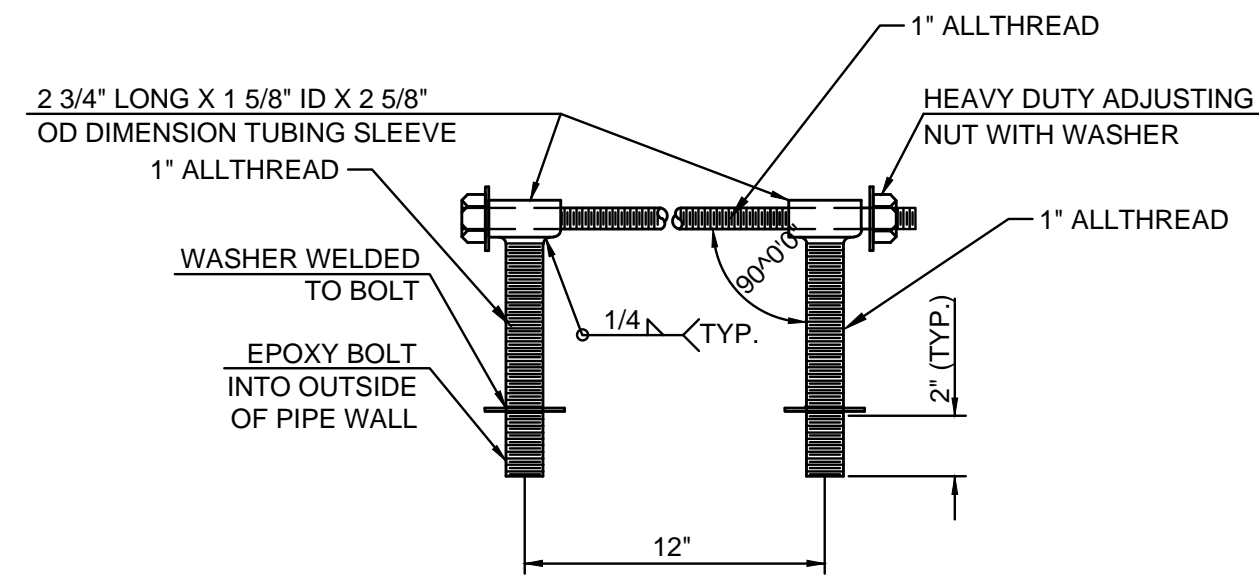


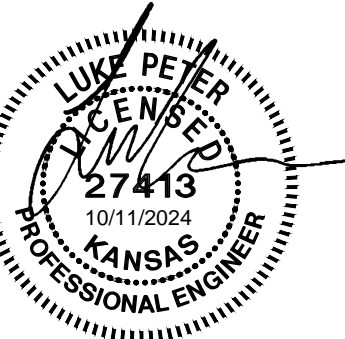
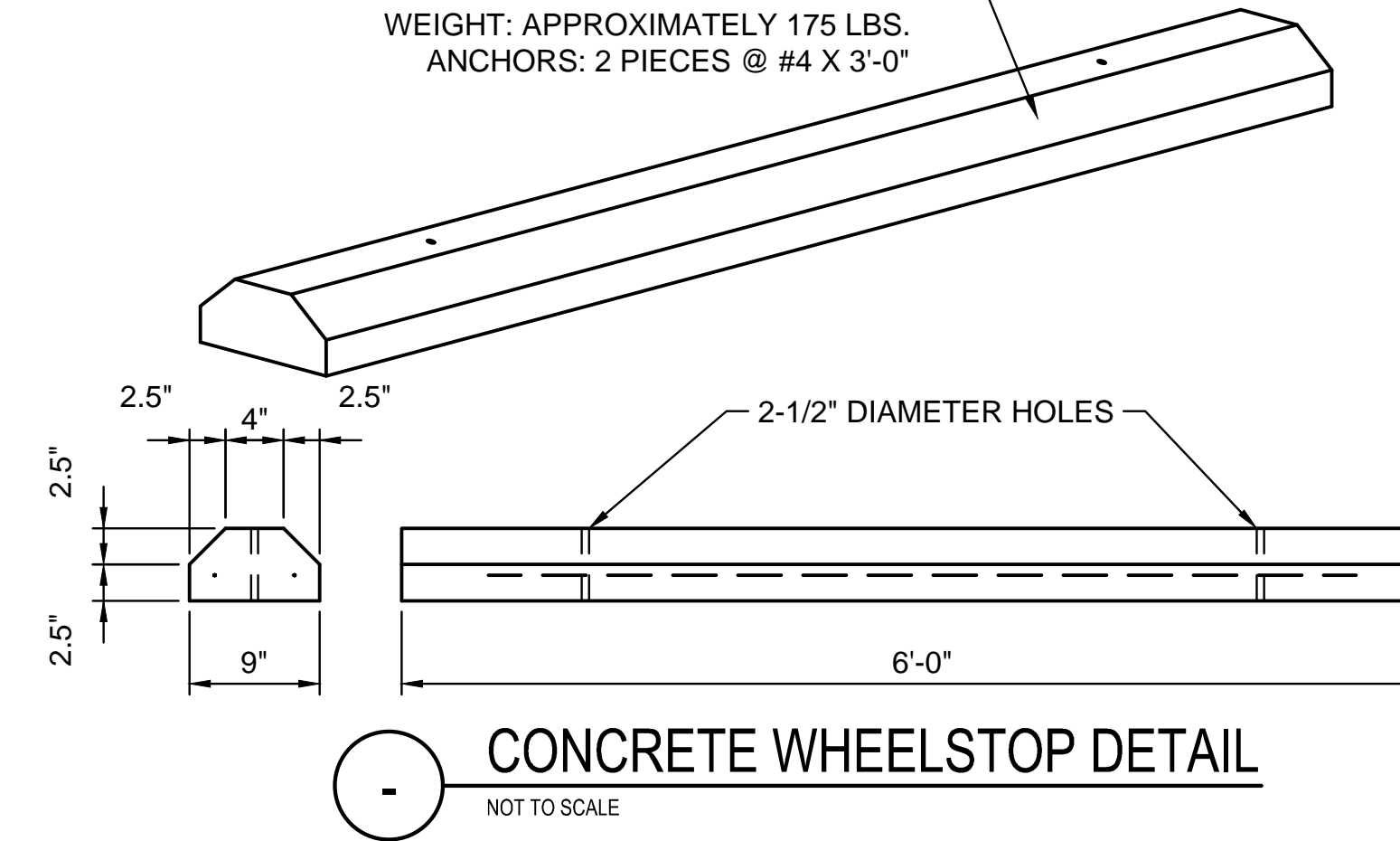
NOTE: WHEN A SWS LINE ENDS WITH A END SECTION - THE LAST TWO JOINTS OF RCP, INCLUDING THE END SECTION, SHALL BE RESTRAINED AS SHOWN IN THE DETAIL ABOVE.



HEAVY DUTY (H.D.) COUPLER (<30")
NO SCALE

- NOTES**
1. BOLTS TO BE A-36 1 1/2" DIAMETER.
 2. BOLTS, NUTS, WASHERS AND SLEEVES TO BE ZINC PLATED.
 3. WASHERS TO BE 3 1/2" O.D. X 7 GAUGE.
 4. SHIP WITH NUTS AND WASHERS PLACED ON BOLTS.

CONCRETE WHEELSTOP SHALL CONSIST OF THE FOLLOWING MATERIAL:
MIX: 6-1/2 SACK CEMENT, 27% ROCK, 4000 PSI
REINFORCEMENT: 2 PIECES @ 1/2" DIAMETER X 5'-0"
WEIGHT: APPROXIMATELY 175 LBS.
ANCHORS: 2 PIECES @ #4 X 3'-0"



WEST STREET IMPROVEMENTS
FROM MACARTHUR ROAD TO
47TH ST. SOUTH
CITY OF WICHITA

Issue:									

JOB NO.	210254-001
DATE	OCTOBER 2024
PM	TZA
DESIGNED BY	LGP
DRAWN BY	CP
CHECKED BY	KMS

MISCELLANEOUS DETAILS