

PAVING IMPROVEMENTS

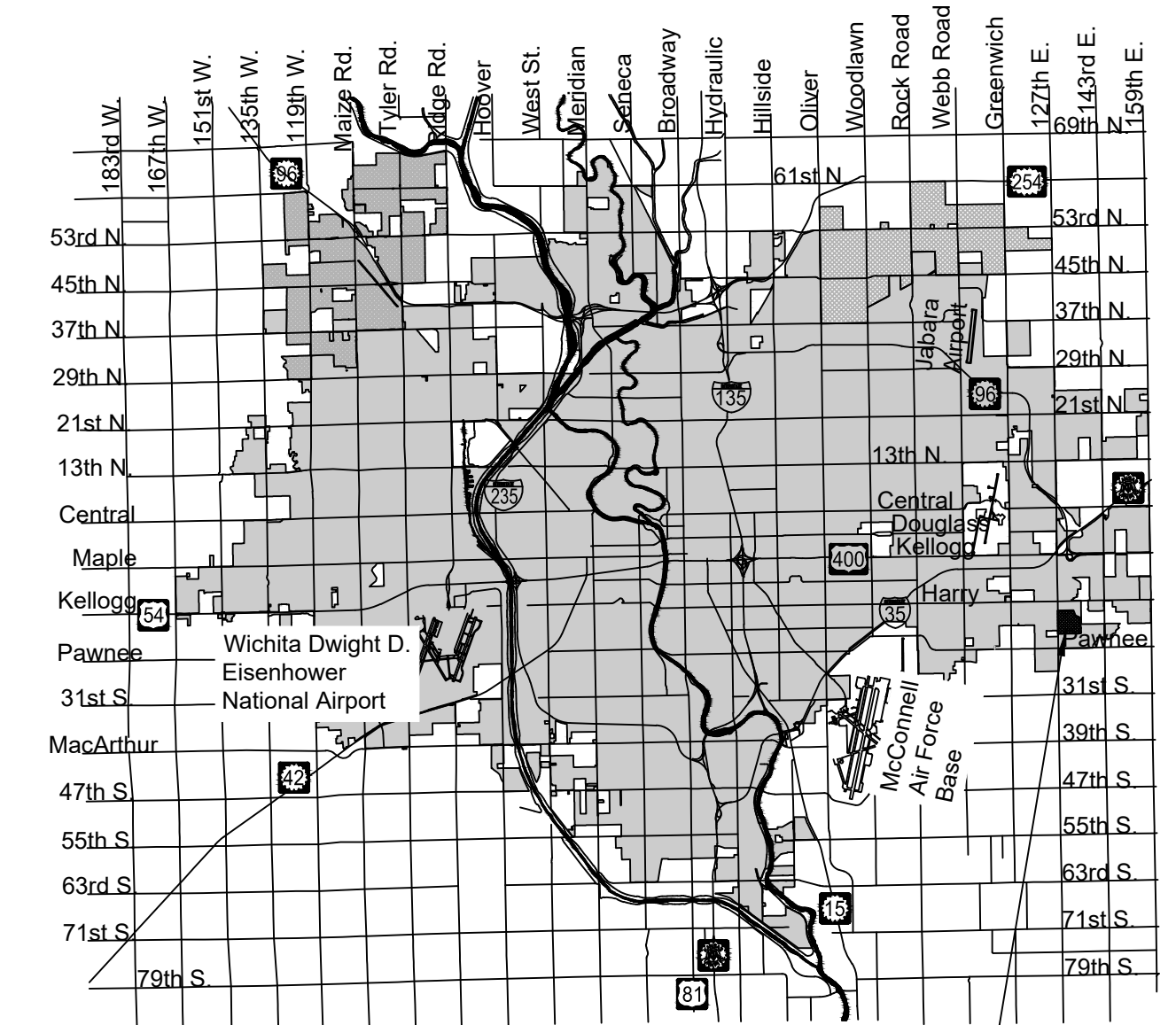
to serve

PADDOCK AT 127TH ADDITION - PHASE II

CITY OF WICHITA, KANSAS

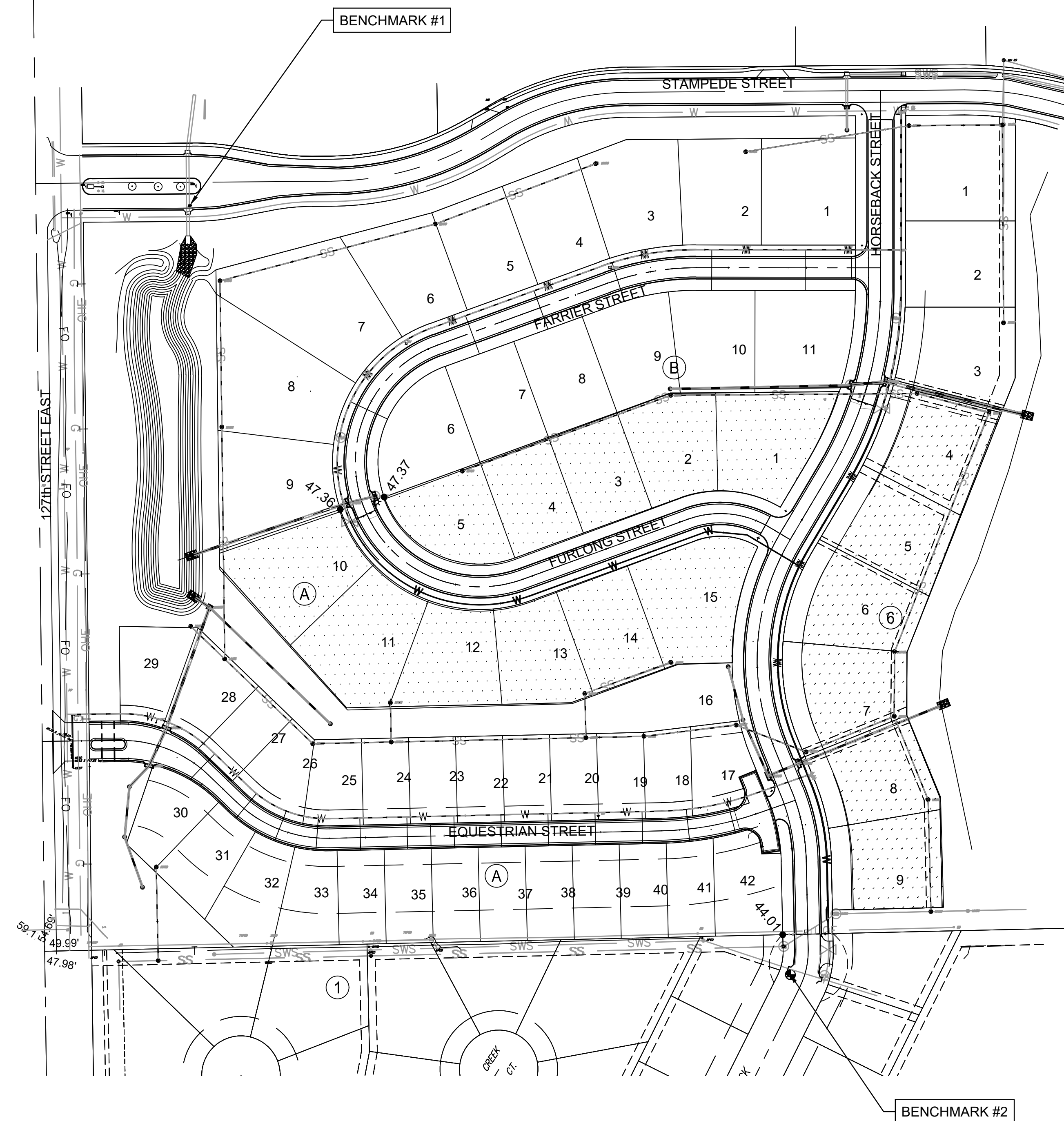
Paul Gunzelman, P.E. City Engineer
 Project Number: 472-2024-086043
 Org Code Number: 47476224
 Munis Number: E4072

Sheet List Table	
Sheet Number	Sheet Title
1	COVERSHEET
2	GENERAL NOTES
3	Asphalt Paving Details
4	Curb & Gutter Details
5	Valley Gutter Details
6	PAVEMENT UNDERDRAIN DETAILS
7	Sign Details
8	HORSEBACK ST - (1 of 2)
9	HORSEBACK ST - (2 of 2)
10	FURLONG ST - (1 of 2)
11	FURLONG ST - (2 of 2)
12	INTERSECTION DETAILS
13	SEEDING
14	COORDINATE MAP PAVING
15	FOUR-CORNER GRADING
16	EC PLAN PAVING
17	EC1-CURB INLET & CONST. ENT.
18	EC2-SILT FENCE
19	EC3-DITCH CHECK
20	EC4-STREET IMPROVEMENTS
21	EC5-SUBDIVISION DEVELOPMENT
22	PADDOCK AT 12TH PLAT
23	EQUESTRIAN ESTATES PLAT
24	SIERRA HILLS PLAT



Vicinity Map

PROJECT LOCATION



EARTHWORK QUANTITIES	
Description	Cu. Yds.
Cut	1696
Fill	543
Net (Cut)	1153

Benchmarks

BENCH MARK POINT #100: CHISELED SQUARE ON THE TOP OF CURB AT THE EAST SIDE OF A CURB INLET ON THE SOUTH SIDE OF STAMPEDE, 200' E. OF THE CENTERLINE OF 127TH ST. E.
 ELEVATION = 1340.58 (NAVD88, G18)
 KANSAS ZONE SOUTH STATE PLANE COORDINATES
 N 1676712.87
 E 1691870.13

BENCH MARK POINT #102: CHISELED SQUARE ON THE TOP OF CURB AT THE SOUTH SIDE OF A CURB INLET ON THE WEST SIDE OF HORSEBACK, 51' S. OF THE NORTH LINE OF LOT 21, BLOCK 1, SIERRA HILLS.
 ELEVATION = 1343.76 (NAVD88, G18)
 KANSAS ZONE SOUTH STATE PLANE COORDINATES
 N 1675737.22
 E 1692632.44

 IMPROVEMENT DISTRICT

NOTE: All coordinates listed are modified NAD83 Kansas State Plane Zone South unless otherwise noted. To convert listed coordinates to NAD83 Kansas State Plane Zone South coordinates multiply the northing and easting by the project scale factor of 0.99994194. Elevation datum is NAVD88 Geoid 18 unless otherwise noted.

OCT. 2024

PLANS PREPARED BY



GARVER
 1995 Midfield Road
 Wichita, KS 67209
 (316) 264-8008
 www.GarverUSA.com
 Project No. 22T41005