

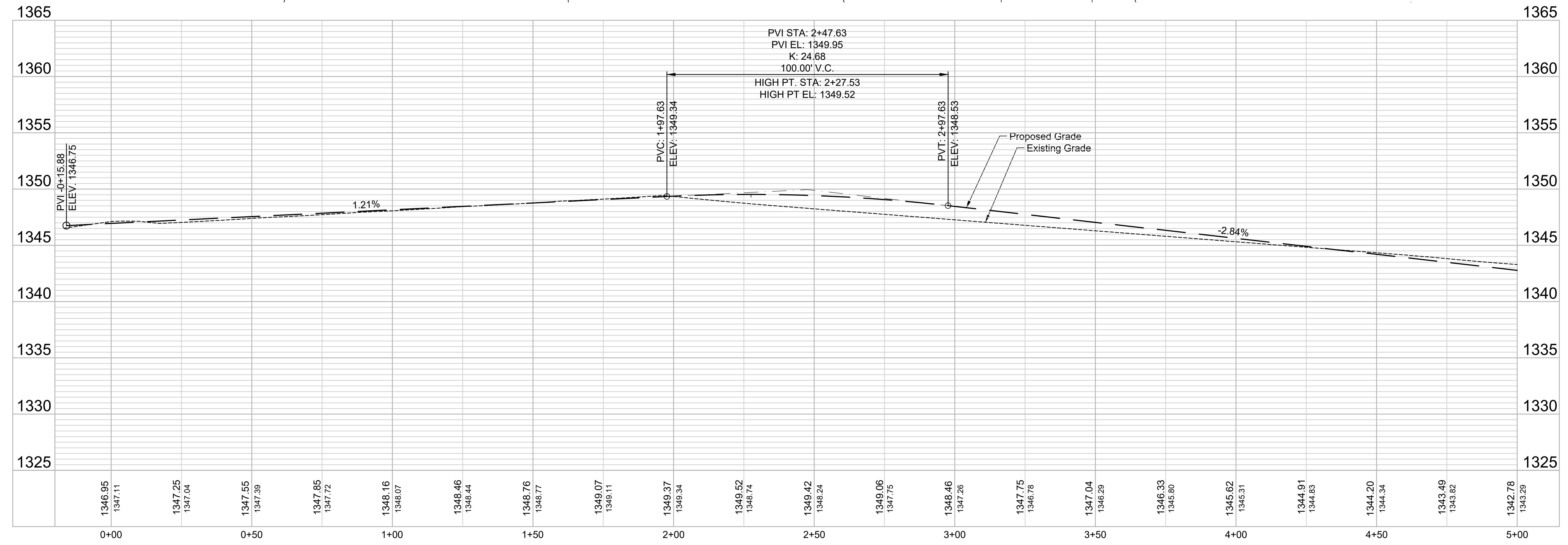
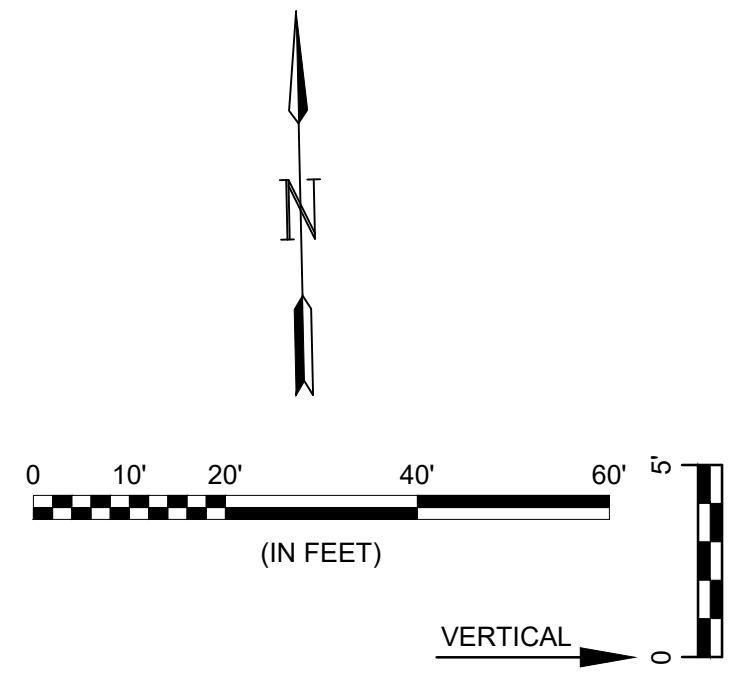
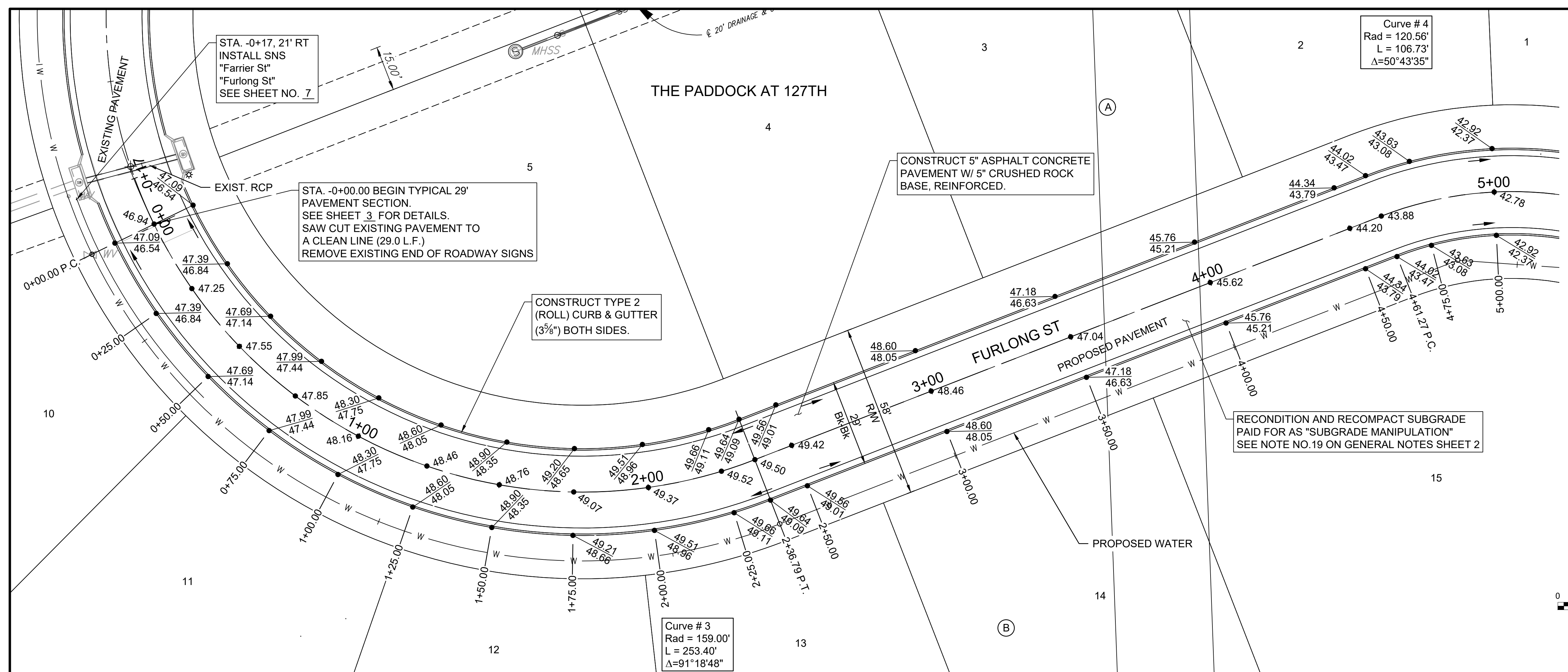


© 2023 GARVER, LLC  
 THIS DOCUMENT, ALONG WITH THE IDEAS AND DESIGNS CONVEYED HEREIN, SHALL BE CONSIDERED INSTRUMENTS OF PROFESSIONAL SERVICE AND ARE PROPERTY OF GARVER, LLC. ANY USE, REPRODUCTION, OR DISTRIBUTION OF THIS DOCUMENT, ALONG WITH THE IDEAS AND DESIGN CONTAINED HEREIN, IS PROHIBITED UNLESS AUTHORIZED IN WRITING BY GARVER, LLC OR EXPLICITLY ALLOWED IN THE GOVERNING PROFESSIONAL SERVICES AGREEMENT FOR THIS WORK.

1995 Midfield Road  
 Wichita, KS 67209  
 (316) 264-8008



- Notes:
1. Curb grades indicated on this sheet are Full Height 6" (0.55") Curb Grades. Roll Curb 3 3/8" (0.30") shall be constructed on this project unless otherwise noted.
  2. Add 1300.00 to all elevations shown to obtain actual elevations.



File: L:\2022\2141005 - Paddock Addition Phase 2\Drawings\DESIGN\PAVING\Furlong - (1 of 2).dwg Last Save: 10/1/2024 4:45 PM Last saved by: SOSchmidt  
 Last plotted by: Schmidt, Stephen O. Plot Date: 10/2/2024 1:31 PM Plotter used: None

REV.	DATE	DESCRIPTION	BY

CITY OF WICHITA  
 WICHITA, KANSAS

THE PADDOCK AT 127TH  
 PAVING - PHASE 2

FURLONG ST -  
 (1 of 2)

JOB NO.: 22T41005  
 DATE: OCT. 2024  
 DESIGNED BY: .  
 DRAWN BY: .

BAR IS ONE INCH ON ORIGINAL DRAWING  
 IF NOT ONE INCH ON THIS SHEET, ADJUST SCALES ACCORDINGLY.

DRAWING NUMBER

SHEET NUMBER **10** OF **24**