



© 2023 GARVER, LLC
 THIS DOCUMENT, ALONG WITH THE IDEAS AND DESIGNS CONVEYED HEREIN, SHALL BE CONSIDERED INSTRUMENTS OF PROFESSIONAL SERVICE AND ARE PROPERTY OF GARVER, LLC. ANY USE, REPRODUCTION, OR DISTRIBUTION OF THIS DOCUMENT, ALONG WITH THE IDEAS AND DESIGN CONTAINED HEREIN, IS PROHIBITED UNLESS AUTHORIZED IN WRITING BY GARVER, LLC OR EXPLICITLY ALLOWED IN THE GOVERNING PROFESSIONAL SERVICES AGREEMENT FOR THIS WORK.

1995 Midfield Road
 Wichita, KS 67209
 (316) 264-8008



REV.	DATE	DESCRIPTION	BY



CITY OF WICHITA
 WICHITA, KANSAS
 THE PADDOCK AT 127TH
 PAVING - PHASE 2

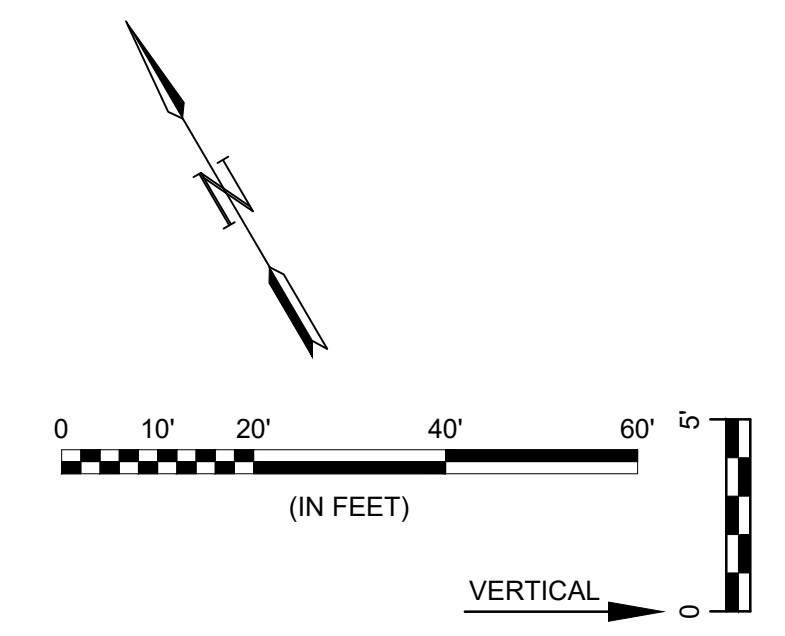
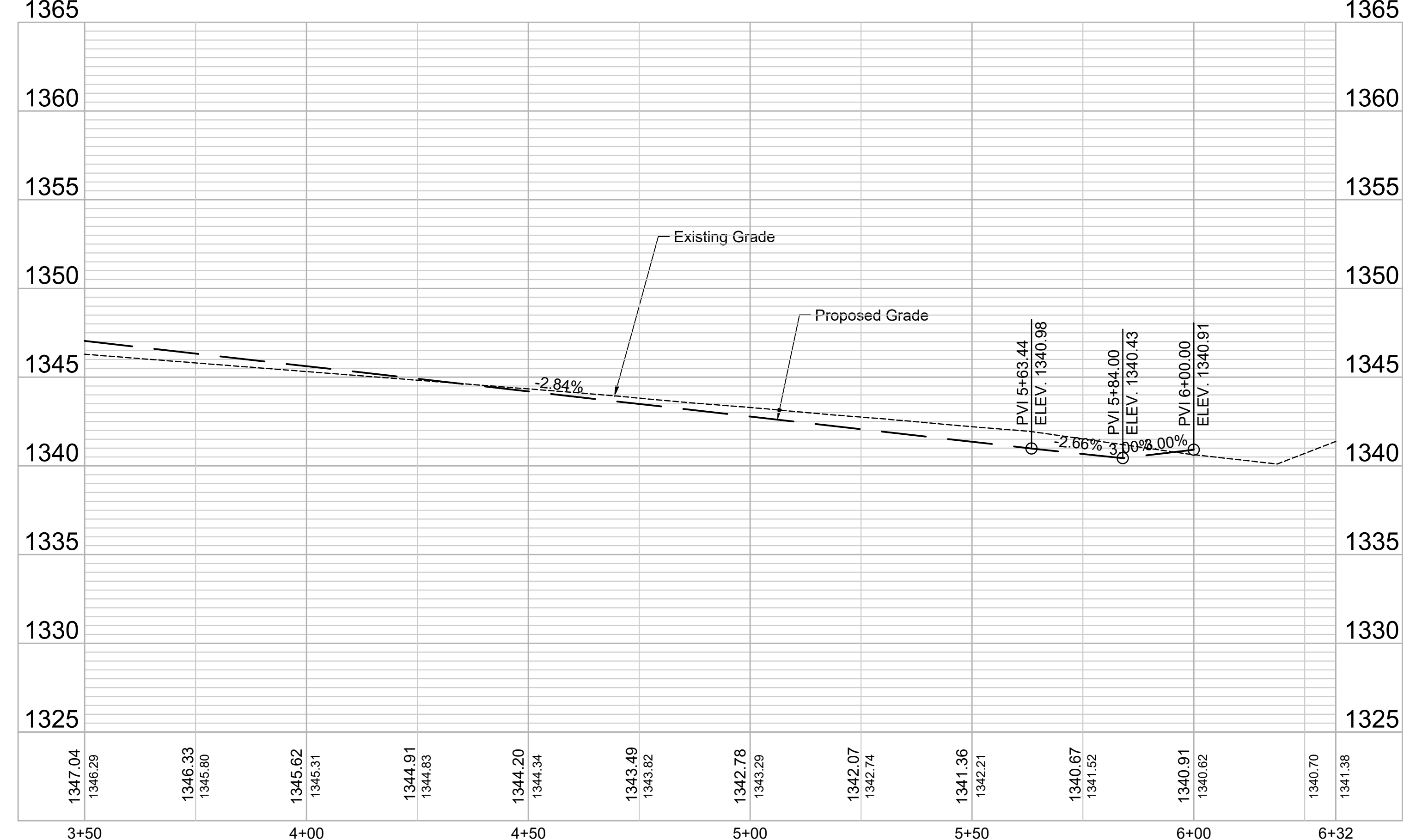
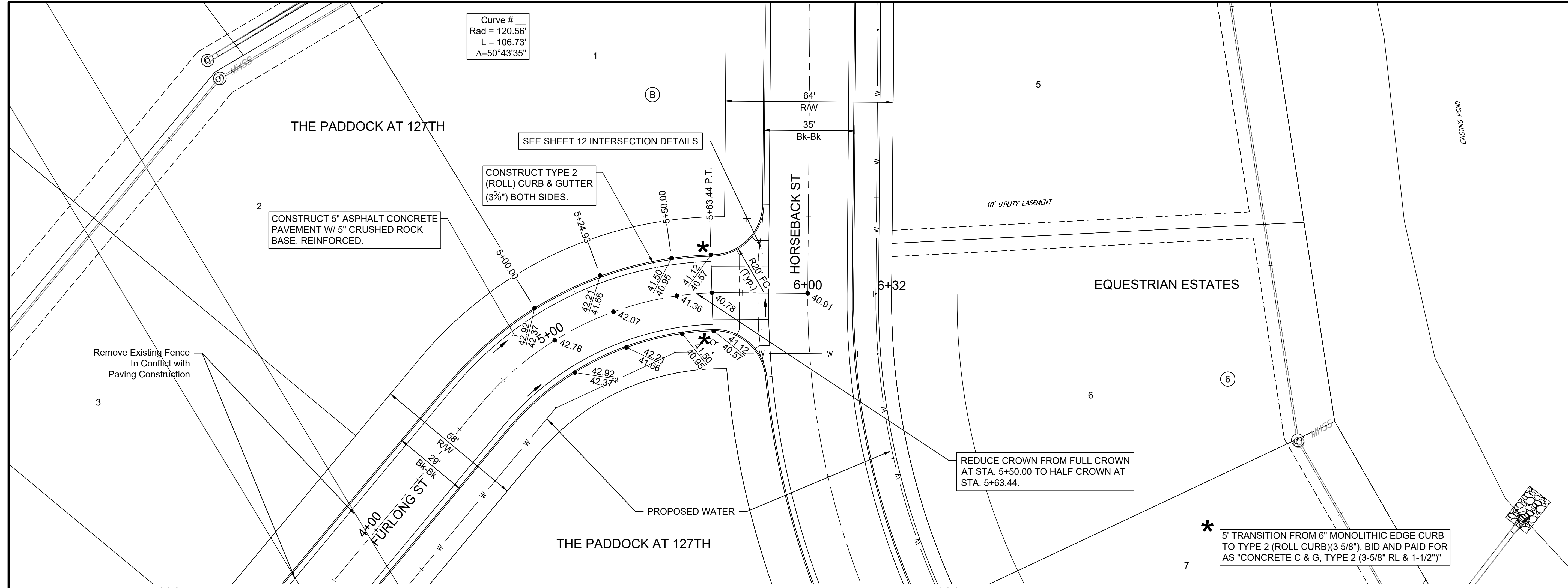
FURLONG ST -
 (2 of 2)

JOB NO.: 22T41005
 DATE: OCT. 2024
 DESIGNED BY: .
 DRAWN BY: .

BAR IS ONE INCH ON ORIGINAL DRAWING
 IF NOT ONE INCH ON THIS SHEET, ADJUST SCALES ACCORDINGLY.

DRAWING NUMBER

SHEET NUMBER **11** OF **24**



- Notes:
- Curb grades indicated on this sheet are Full Height 6 5/8" (0.55') Curb Grades. Roll Curb 3 3/8" (0.30') shall be constructed on this project unless otherwise noted.
 - Add 1300.00 to all elevations shown to obtain actual elevations.

File: L:\2022\22T41005 - Paddock Addition Phase 2\Drawings\DESIGN\PAVING\Furlong - (2 of 2).dwg Last Save: 10/11/2024 3:49 PM Last saved by: SOSchmidt
 Last plotted by: Schmidt, Stephen O. Plot Style: --- Plot Scale: 1:2,884.9 Plot Date: 10/22/2024 1:32 PM Plotter used: None