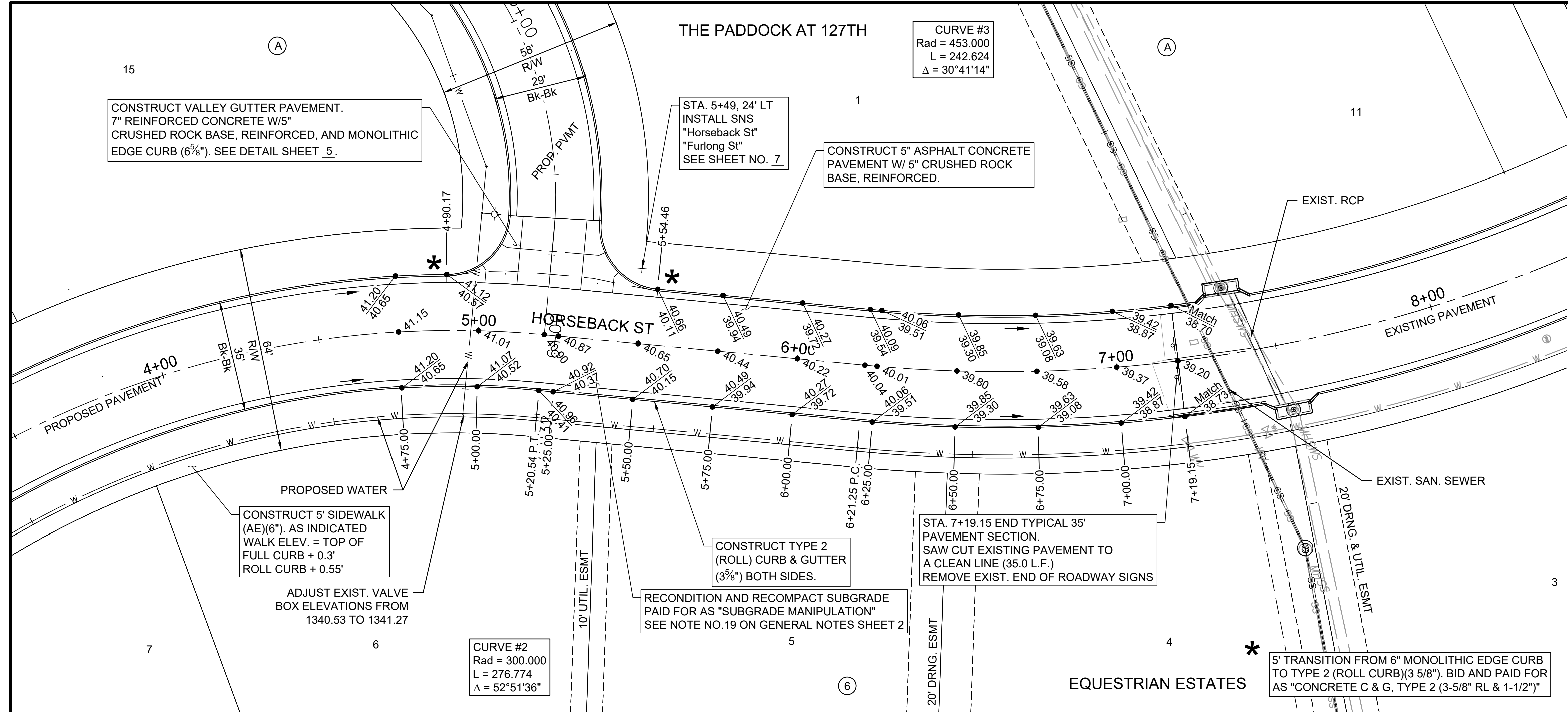
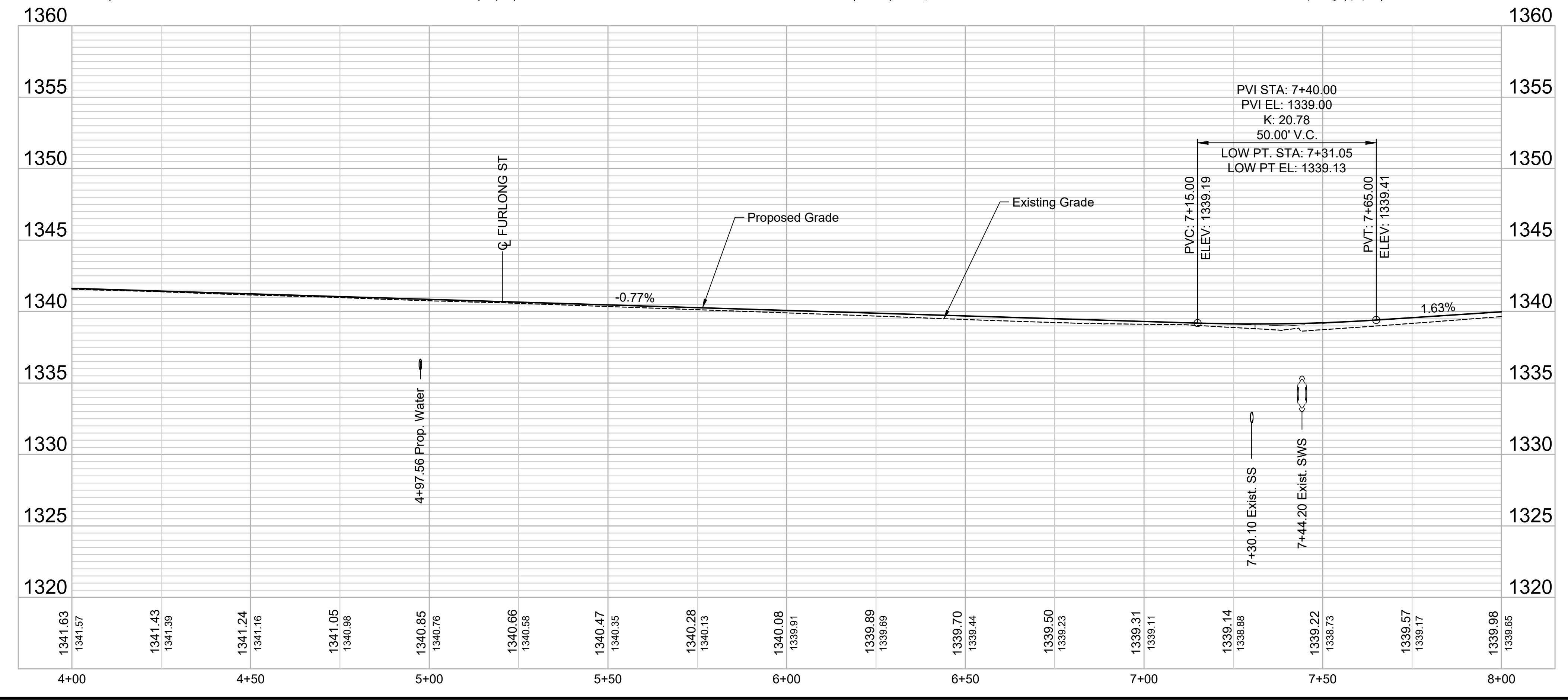
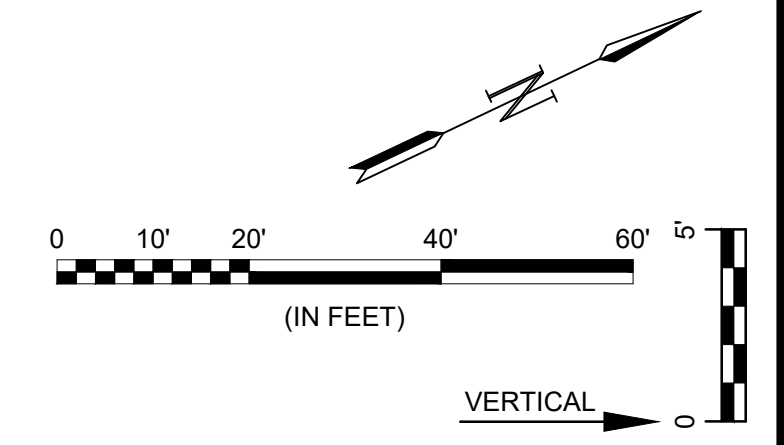


File: L:\2022\2141005 - Paddock Addition Phase 2\Drawings\DESIGN\PAVING\HORSEBACK - (2 of 2).dwg Last Save: 10/1/2024 4:46 PM Last saved by: SOSchmidt
 Last plotted by: Schmidt, Stephen O. Plot Style: --- Plot Scale: 1:2,884.9 Plot Date: 10/2/2024 1:30 PM Plotter used: None




CURVE #3
 Rad = 453.000
 L = 242.624
 $\Delta = 30^\circ 41' 14''$

CURVE #2
 Rad = 300.000
 L = 276.774
 $\Delta = 52^\circ 51' 36''$




- Notes:
- All sidewalks shall have 2% cross-slope per ADA requirements.
 - Curb grades indicated on this sheet are Full Height 6 5/8" (0.55') Curb Grades. Roll Curb 3 5/8" (0.30') shall be constructed on this project unless otherwise noted.
 - Outside edge of sidewalk shall be 0.30' above Full Height Curb Grades.
 - Add 1300.00 to all elevations shown to obtain actual elevations.




© 2023 GARVER, LLC
 THIS DOCUMENT, ALONG WITH THE IDEAS AND DESIGNS CONVEYED HEREIN, SHALL BE CONSIDERED INSTRUMENTS OF PROFESSIONAL SERVICE AND ARE PROPERTY OF GARVER, LLC. ANY USE, REPRODUCTION, OR DISTRIBUTION OF THIS DOCUMENT, ALONG WITH THE IDEAS AND DESIGN CONTAINED HEREIN, IS PROHIBITED UNLESS AUTHORIZED IN WRITING BY GARVER, LLC OR EXPLICITLY ALLOWED IN THE GOVERNING PROFESSIONAL SERVICES AGREEMENT FOR THIS WORK.

1995 Midfield Road
 Wichita, KS 67209
 (316) 264-8008



REV.	DATE	DESCRIPTION	BY



CITY OF WICHITA
 WICHITA, KANSAS

THE PADDOCK AT 127TH
 PAVING - PHASE 2

HORSEBACK
 ST - (2 of 2)

JOB NO.: 22T41005
 DATE: OCT. 2024
 DESIGNED BY: .
 DRAWN BY: .

BAR IS ONE INCH ON ORIGINAL DRAWING
 IF NOT ONE INCH ON THIS SHEET, ADJUST SCALES ACCORDINGLY.

DRAWING NUMBER

SHEET NUMBER **9** OF **24**