

GENERAL NOTES:

1. Contractor will be required to provide notice to utility companies a minimum of seventy-two (72) hours prior to any excavation, as follows:

Kansas One-Call 687-2470

The Contractor must notify the following in case of an emergency:

Cox Communications 262-4270
 Kansas Gas Service 1-888-482
 Evergy 383-8650
 Black Hills Energy 1-800-303-0357
 AT&T 268-2245
 City of Wichita Water Dept. 268-4563
 City of Wichita Sewer Maint. 268-4024
 City of Wichita Storm Sewer Maint. 268-4090
 City of Wichita Traffic Maint. 268-4034
 Conoco Phillips Pipeline Co. 1-877-267-2290
 Southern Star Pipeline Co. 529-6600
 Kinder-Morgan Pipeline Co. 1-888-844-5658

2. Utility service lines, poles, valve boxes, meters, and etcetera are to be adjusted as necessary by others prior to construction unless the plans specifically call for their adjustment by the Contractor or unless the plans specifically identify a utility to be adjusted by its owner during construction. Existing utilities and their location as shown on the plans, represent the best information obtainable for design. The Contractor will be required to work around existing utilities within the right-of-way which do not conflict with proposed construction.

3. Rubble from the removal of miscellaneous structures and excess excavation which is to be wasted shall be disposed of on sites to be provided by the Contractor. These sites shall be approved by the Engineer as to suitability, appearance and site location. Locations, in the opinion of the Engineer, that will leave an unsightly appearance will not be approved. All disposal sites must be approved by the Kansas Department of Health and Environment. Material either stockpiled or disposed of in a flood plain would require a Kansas State Board of Agriculture permit. Any material dumped in waters of the United States or wetlands is subject to U.S. Corps of Engineers permitting regulations. Any material buried or stockpiled beyond approved construction limits would require additional archaeological investigations unless buried in a previously approved borrow location.

4. Trees and shrubs in public right-of-way which are in direct conflict with proposed new construction shall be removed by the Contractor with the Engineer's approval. Trees and shrubs which are not in direct conflict with proposed new construction shall be saved and protected from damage.

5. The Contractor shall give all property owners and/or tenants of developed property abutting the construction of this project a minimum of ten (10) days notice prior to start of construction.

6. The Contractor shall be responsible for preserving property irons. The Contractor will be required to re-establish any property irons which are damaged or destroyed by his construction operations. Such irons shall be re-established by a licensed land surveyor in accordance with state laws.

7. All existing and proposed erosion control measures including silt fencing, erosion control mat, straw bales, inlet barriers, and const. entrance shall be maintained throughout construction by the contractor and until project is accepted by the City of Wichita. The on-site engineer shall complete weekly reports on the status of erosion control measures. The contractor shall be required to comply with maintenance and/or replacement of erosion control measures as determined by the on-site engineer until project is accepted by City of Wichita. Maintenance and/or replacement of erosion control measures to be paid by L.S. bid item "Maintain Existing BMP's."

8. All excess excavation shall remain on-site and shall be stockpiled or spread at a location determined by the Engineer.

9. The Contractor shall be responsible for maintaining continuous flow of sewage through construction. Contractor's proposed method for maintaining sewage flow shall be approved by the Engineer. Cost of maintaining flow of sewage through construction will not be paid for directly and this cost shall be considered as subsidiary to the other pay items of work.

10. See the Stormwater Drain project for details regarding seeding, mulching, and fertilizing.

11. Trees and shrubs in the work area which are in direct conflict with proposed new construction shall be removed by the Contractor ONLY with the Developer or Baughman Company approval. Trees and shrubs which are not in direct conflict with proposed new construction shall be saved and protected from damage. If trimming is necessary, a chainsaw shall be used. Breaking limbs with equipment will not be allowed. An on-site pre-construction meeting will occur prior to any construction to discuss tree removal, tree protection, and tree trimming.

12. Geotechnical Report shows the presence of groundwater at an approximate elevation of 1339.0 (April 2022).

13. Sales tax exemption does not apply to this project.

14. Geotechnical Report Available. Contact Design Engineer.

15. Staking & Inspection will be provided by the City of Wichita.

16. The Developer for this project is Jay Russell. P.O. Box 75337, Wichita, KS 67272 PH# (316) 990-2105 Email j@jussellco.com

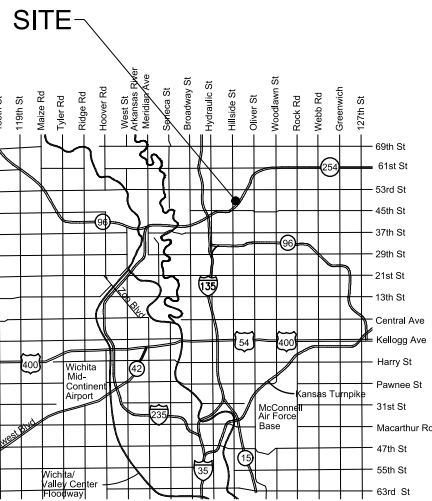
Pipe, SS 8" = 8,180 LF
Riser Assembly 4", Manhole Stub = 33 EACH
Riser Assembly 4", Vertical = 59 EACH
MH, Standard SS (4') = 33 EACH
MH, Outside Drop SS (4') = 5 EACH
MH Outside Drop SS (5') = 6 EACH
Air Testing, SS Pipe = 8,180 LF

BENCHMARKS

Square cut in the center of headwall, southerly RCBC, ±82' north of the northeast corner of Lot 30, Block C, Falcon Falls 3rd Addition. Elev.=1344.07 NAVD 88

Square cut in top of curb, center of east curb return of center island, Blackhawk St, 53' west of centerline intersection of Hillside Ave. and Blackhawk St. Elev.=1354.01 NAVD 88

Square cut with cross, in hub quad, east side of Hillside Avenue, 110 feet south of and 27 west of the southwest corner of the northwest quarter Section 23, Township 26 South, Range 1 East. Elev.=1355.28 NAVD 88



VICINITY MAP

AS-BUILT PLANS

Contractor = Nowak Construction
Inspector = Fred Smith - Baughman Company

As-Built Plans = FES & Larry Powell
10-15-2024

SANITARY SEWER IMPROVEMENTS

to serve

FALCON FALLS EAST 2ND ADDITION

CITY OF WICHITA, KANSAS

Paul Gunzelman, P.E., City Engineer

Project Number: 468-2023-031005

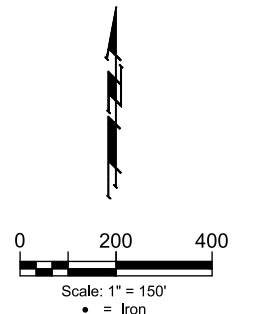
Org Code Number: 47270623

Munis Number: E3162

Baughman Co. Job No.: 24-03-E743

Construction Began = April 2024

Construction End = June 2024



SHEET INDEX

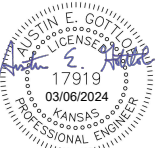
Title Sheet	1
Line 1	2-4
Line 2	5-6
Line 3	7
Line 4	8
Line 5	9
Line 6	10
Line 7	11-12
Line 8	13
Line 9	14
Line 10	15-16
Erosion Control Plan	17
Erosion Control BMP Details	18-22
Standard Manhole Detail	23
Frame & Cover Detail	24
Vertical Riser Detail	25
Cleanout Riser Detail	26
Coordinate Sheet	27
Copy of Plat	28

K. Kerns - City of Wichita, Field Project Engineer
 As-built
 Stubs & Risers
 Release Date (for connection purposes only): 7/1/2024
 Completion Date:
 pdf: apr 12/19/2024

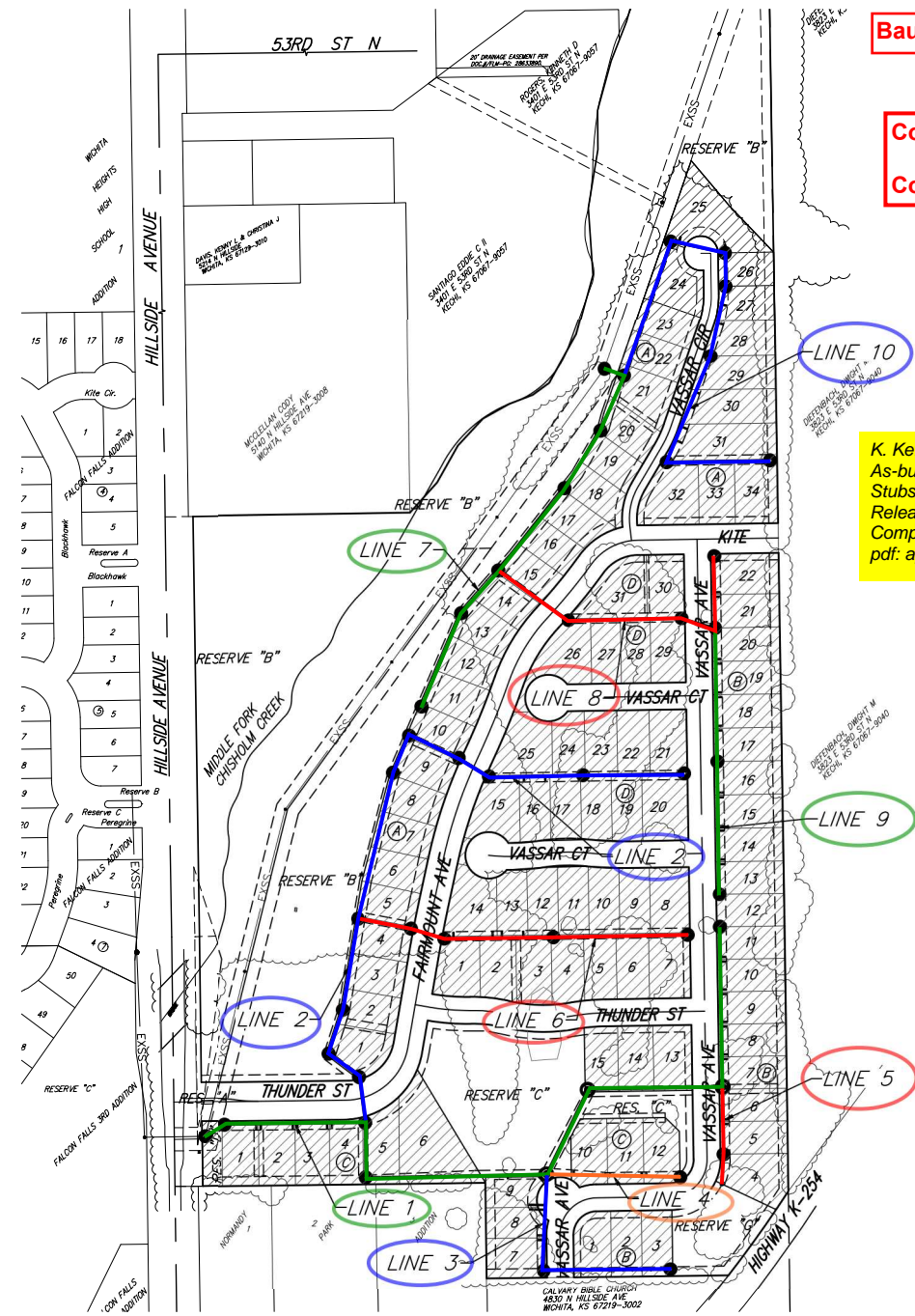
APPROVED AS NOTED
 BY WICHITA PUBLIC WORKS ENGINEERING
 Engineering *[Signature]* 2/13/24
 An approved copy of these plans signed by City staff are required on-site.

CONSTRUCTION PHASING

The goal is to complete the mass grading, pond construction, utilities, etc. serving phase 1 lots so the phase 1 street paving construction can begin and be completed as soon as possible. The mass grading, storm sewer, and sanitary sewer construction outside of the phase 1 lots may be constructed concurrently and after the phase 1 paving project.



January 24, 2024



BENEFIT DISTRICT

BAUGHMAN COMPANY
 315 Ellis St. Wichita, KS 67211 316-262-7271
 BaughmanCo.com



Construction Engineering Division
 1801 S. McLean Blvd., Suite B
 Wichita KS, 67213
 (316) 268-4027

Sanitary Sewer Riser Table

Project Name: SS_WDS_SWD #517 to serve Falcon Falls East 2nd Addn, Ph 1

Project Location: N of K-254, East of Hillside

Project No: 468-2023-085551

MUNIS No: E3163/47313323

Contractor: Nowak Construction

Inspector: Fred Smith - Baughman

Riser No.	Line No.	Station	Distance from Main to Riser (Lt./Rt.)		Distance from		Comment
					Upstream MH	Downstream MH	
1	1	0+50.5	15.6'	RT	2.7'	STUB	
2	1	1+16.4	13.1'	RT	236.5'	66.2'	
3	1	1+29.1	11.7'	RT	225.2'	77.5'	
4	1	1+92.4	13.7'	RT	163.5'	139.2'	
5	1	2+07.8	13.4'	RT	144.8'	157.9'	
6	1	2+68.4	14.2'	RT	82.5'	220.3'	
7	1	2+81.8	12.3'	RT	68.6'	234.1'	
8	1	3+43.8	6.9'	RT	9.1'	293.7'	
9	1	3+53.9	6.4'	LT	7.0'	STUB	
10	1	7+78.2	11.2'	RT	82.0'	308.1'	
11	1	10+63.8	4.7'	LT	4.2'	STUB	
12	1	13+54.9	14.0'	RT	8.0'	STUB	
13	1	13+54.9	14.7'	RT	8.0'	STUB	
14	1	14+14.9	13.3'	RT	285.8'	57.4'	
15	1	14+26.6	13.9'	RT	274.3'	68.8'	
16	1	14+84.9	14.5'	RT	214.5'	128.6'	
17	1	14+94.9	13.2'	RT	201.7'	141.4'	
18	1	15+54.9	14.6'	RT	138.9'	204.2'	
19	1	15+68.1	13.2'	RT	131.4'	211.7'	
20	1	16+24.9	14.2'	RT	71.9'	271.2'	
21	1	16+36.1	13.5'	RT	63.6'	279.6'	
22	1	16+99.9	15.4'	RT	7.3'	STUB	
23	1	16+99.9	15.1'	RT	8.7'	STUB	
24	2	8+90.7	12.3'	RT	13.0'	STUB	
25	2	10+85.2	14.7'	RT	15.0'	STUB	
26	2	11+40.0	14.6'	RT	149.5'	52.5'	
27	2	11+60.0	14.1'	RT	130.5'	71.5'	
28	2	12+06.0	14.2'	RT	83.8'	118.2'	
29	3	0+77.8	35.7'	RT	129.3'	77.9'	
30	3	0+87.8	30.6'	RT	118.3'	88.9'	
31	3	1+40.3	16.4'	RT	67.0'	140.2'	
32	3	1+50.3	16.0'	RT	57.0'	150.2'	
33	3	2+08.1	16.6'	RT	5.2'	202.0'	
34	3	5+04.1	6.3'	LT	5.4'	STUB	
35	4	0+58.8	13.1'	LT	228.3'	58.9'	
36	4	1+26.8	9.3'	LT	163.5'	123.7'	
37	4	1+39.0	8.7'	LT	147.7'	139.6'	



Construction Engineering Division
 1801 S. McLean Blvd., Suite B
 Wichita KS, 67213
 (316) 268-4027

Sanitary Sewer Riser Table

Project Name: SS_WDS_SWD #517 to serve Falcon Falls East 2nd Addn, Ph 1

Project Location: N of K-254, East of Hillside

Project No: 468-2023-085551

MUNIS No: E3163/47313323

Contractor: Nowak Construction

Inspector: Fred Smith - Baughman

Riser No.	Line No.	Station	Distance from Main to Riser (Lt./Rt.)		Distance from		Comment
					Upstream MH	Downstream MH	
38	4	2+01.6	11.1'	LT	87.6'	199.6'	
39	4	2+14.9	11.2'	LT	73.5'	213.7'	
40	4	2+87.9	13.1'	LT	9.5'	STUB	
41	5	0+70.0	14.5'	LT	76.0'	69.9'	
42	5	0+83.2	13.0'	LT	61.3'	84.5'	
43	5	1+45.0	15.7'	LT	8.0'	137.9'	
44	5	1+45.0	14.8'	LT	68.0'	3.3'	
45	5	2+14.1	8.4'	LT	5.2'	STUB	
46	6	2+11.0	15.8'	LT	213.9'	21.8'	
47	6	2+76.3	15.2'	LT	148.0'	87.7'	
48	6	2+96.3	16.8'	LT	129.6'	106.1'	
49	6	3+43.8	16.6'	LT	81.6'	154.1'	
50	6	3+99.0	9.1'	LT	26.3'	209.4'	
51	6	4+26.1	15.7'	LT	STUB	STUB	
52	6	4+26.1	7.1'	RT	3.2'	STUB	
53	7	0+44.9	5.6'	LT	128.6'	STUB	
54	7	8+88.0	17.1'	LT	8.6'	STUB	
55	8	1+85.1	8.2'	RT	3.0'	STUB	
56	8	4+28.8	14.3'	LT	9.1'	STUB	
57	8	4+28.8	7.8'	RT	2.3'	STUB	
58	8	5+04.0	14.7'	RT	5.8'	STUB	
59	8	5+04.0	14.3'	RT	5.7'	STUB	
60	8	5+69.0	15.3'	RT	89.9'	63.8'	
61	8	5+83.0	15.0'	RT	76.8'	76.9'	
62	8	6+48.8	13.8'	RT	10.9'	142.8'	
63	9	0+65.0	12.9'	LT	222.3'	66.1'	
64	9	0+79.0	14.2'	LT	208.2'	80.2'	
65	9	1+37.0	17.6'	LT	153.0'	135.5'	
66	9	1+51.0	18.9'	LT	137.5'	151.0'	
67	9	2+09.0	14.3'	LT	82.5'	206.0'	
68	9	2+23.0	14.7'	LT	66.4'	222.0'	
69	9	2+88.0	14.5'	LT	6.0'	STUB	
70	9	2+88.0	14.1'	LT	5.5'	STUB	
71	9	3+53.0	14.8'	LT	220.8'	65.5'	
72	9	3+67.0	14.6'	LT	207.1'	79.2'	
73	9	4+20.5	15.2'	LT	155.5'	130.8'	
74	9	4+34.5	15.3'	LT	138.3'	148.0'	
75	9	4+94.1	14.5'	LT	81.0'	205.3'	



Construction Engineering Division
 1801 S. McLean Blvd., Suite B
 Wichita KS, 67213
 (316) 268-4027

Sanitary Sewer Riser Table

Project Name: SS_WDS_SWD #517 to serve Falcon Falls East 2nd Addn, Ph 1
Project Location: N of K-254, East of Hillside
Project No: 468-2023-085551
MUNIS No: E3163/47313323
Contractor: Nowak Construction
Inspector: Fred Smith - Baughman

Riser No.	Line No.	Station	Distance from Main to Riser (Lt./Rt.)		Distance from		Comment
					Upstream MH	Downstream MH	
76	9	5+08.1	14.7'	LT	67.5'	218.8'	
77	9	5+74.0	11.5'	LT	9.8'	STUB	
78	9	5+74.0	16.0'	LT	2.6'	STUB	
79	10	3+26.5	16.0'	LT	99.5'	20.9'	
80	10	4+27.3	26.8'	LT	6.2'	STUB	
81	10	4+27.3	6.3'	LT	6.1'	STUB	
82	10	4+99.3	5.9'	LT	7.3'	STUB	
83	10	4+99.3	7.5'	LT	4.7'	STUB	
84	10	5+39.6	14.6'	LT	117.7'	39.8'	
85	10	5+82.1	14.6'	LT	75.8'	81.7'	
86	10	6+55.1	7.3'	LT	7.0'	STUB	
87	10	6+55.1	6.6'	LT	3.3'	STUB	
88	10	6+94.3	9.5'	LT	207.0'	39.0'	
89	10	7+38.6	12.0'	LT	164.2'	81.8'	
90	10	7+72.1	14.3'	LT	132.2'	113.8'	
91	10	8+19.2	17.0'	LT	83.3'	162.7'	
92	10	8+51.1	18.9'	LT	52.4'	193.6'	

BENCHMARKS:
 Square cut in the center of headwall, southerly RCB, ±82' north of the northeast corner of Lot 30, Block C, Falcon Falls 3rd Addition. Elev.=1344.07 NAVD 88

Square cut in top of curb, center of east curb return of center island, Blackhawk St., 33' west of centerline intersection of Hillside Ave. and Blackhawk St. Elev.=1354.01 NAVD 88

Square cut with cross, in hub guard, east side of Hillside Avenue, 110 feet south of and 27 west of the southwest corner of the northwest quarter, Section 23, Township 26 South, Range 1 East. Elev.=1355.29 NAVD 88

Northings and Eastings: State Plane Coordinates - Kansas Grid South - NAD83.

Elevations: NAVD88

GPS Survey Shots By: Fred Smith - Baughman Company, P.A.

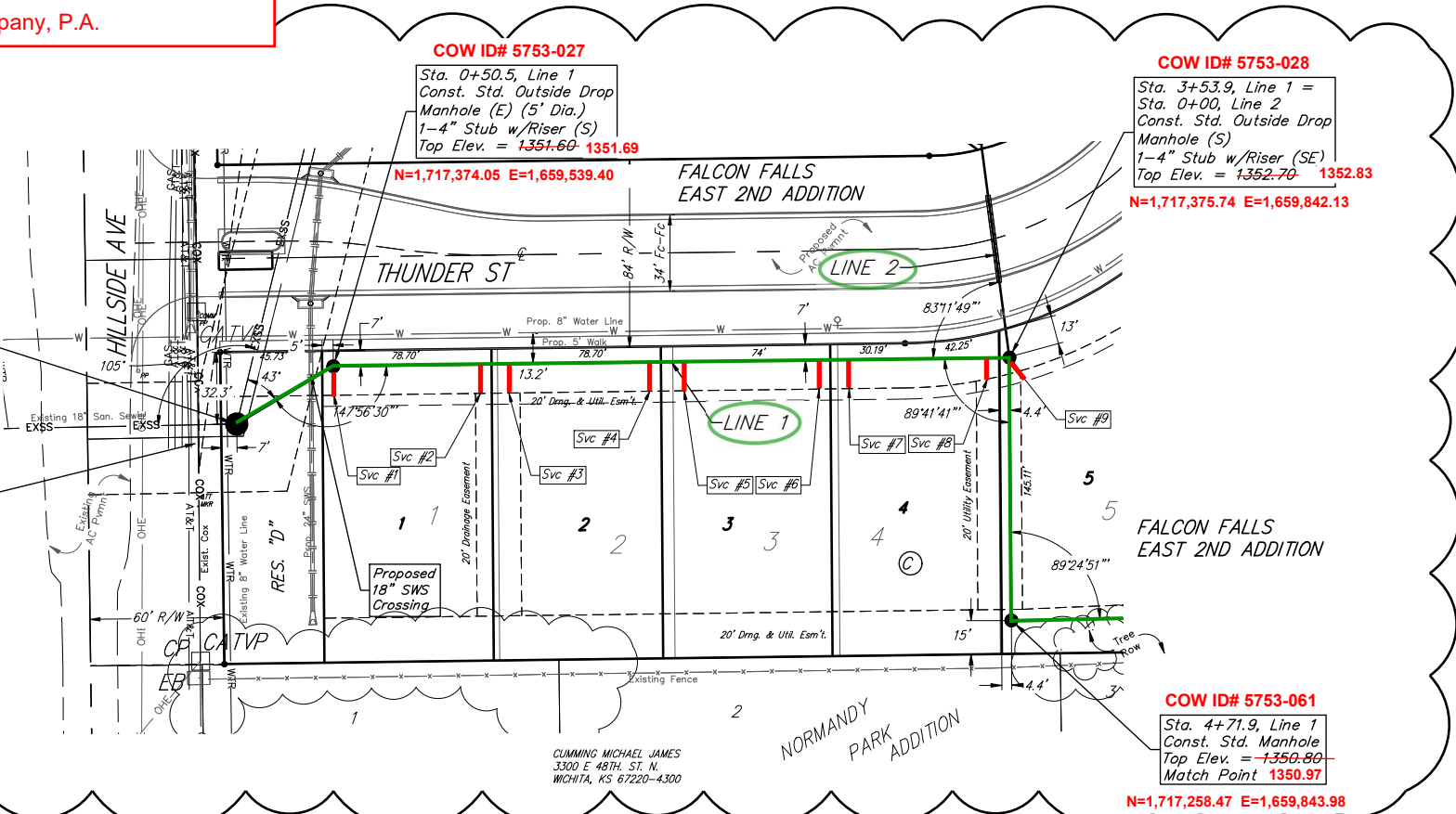
SRV 1: N=1,717,358.59 E=1,659,536.80
SRV 2: N=1,717,361.27 E=1,659,605.67
SRV 3: N=1,717,362.76 E=1,659,617.02
SRV 4: N=1,717,361.12 E=1,659,678.69
SRV 5: N=1,717,361.50 E=1,659,697.42
SRV 6: N=1,717,361.05 E=1,659,759.74
SRV 7: N=1,717,363.04 E=1,659,773.62
SRV 8: N=1,717,368.83 E=1,659,833.11

Riser No.	Distance from Main to Riser	Lot No.	Block No.	Distance from	
				USMH	DSMH
1	16' Rt.	1	C	3'	stub
2	13' Rt.	2	C	237'	66'
3	12' Rt.	3	C	225'	78'
4	14' Rt.	4	C	164'	139'
5	13' Rt.	5	C	145'	158'
6	14' Rt.	6	C	83'	220'
7	12' Rt.	7	C	69'	234'
8	7' Rt.	8	C	9'	294'
9	6' Lt.	9	C	7'	stub

COW ID# 5753-002
 Sta. 0+00.0, Begin Line 1
 Connect to Existing
 Manhole # 5753-002
 See Note #1.
 Ex. Top Elev. = ~~-1346.64~~
 Manhole Raised to 1349.16
 N=1,717,346.21 E=1,659,497.48

CAUTION!
 Every & Cox Near

Service lines at crossings. Lines and all Distances at point.



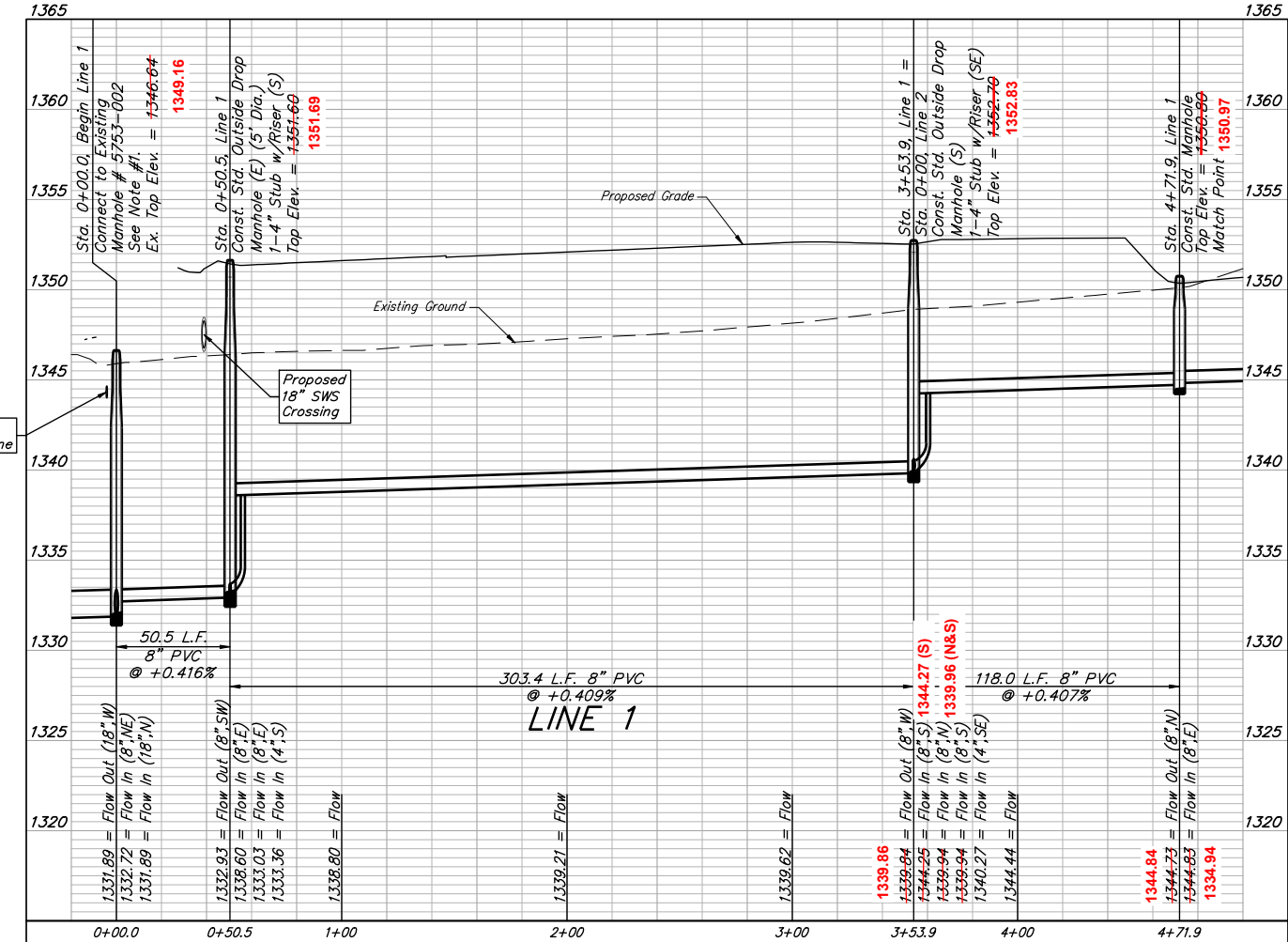
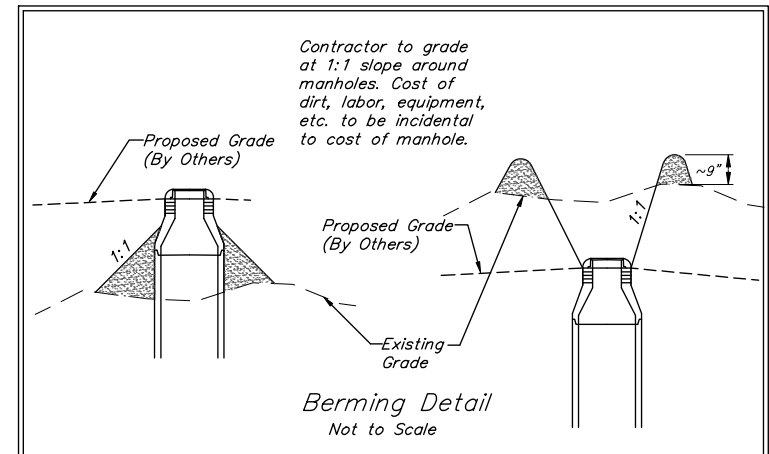
LEGEND

EX. Falcon Falls East 2nd Plat	Lot Line	---
	Lot #	13
PRO. Falcon Falls East 3rd Plat	Lot Line	---
	Lot #	13

Existing trees which are in direct conflict with proposed new construction shall be removed by the Contractor ONLY with approval of the Engineer. Trees not in direct conflict with proposed new construction shall remain and be protected from damage. Cost shall be included in bid item "Site Clearing."

All trench and manhole excavation areas from Sta. 0+50.5 to Sta. 3+53.9, Line 1 shall be backfilled with sand. The sand backfill shall be water-jetted and vibrated during backfilling. All costs shall be paid for as L.F. "Fill, Sand (Flushed & Vibrated)".

NUMBER	TYPE	LOCATION			FOR INFORMATION ONLY		
		LOT NO.	BLOCK NO.	LINE NO.	STATION/DIRECTION	APPROXIMATE LENGTH 4" PIPE	
1	4" Stub	1	C	1	0+50.50/Rt.	14.3	13.0
2	8" X 4" Tee	1	C	1	1+16.40/Rt.	8.0	13.0
3	8" X 4" Tee	2	C	1	1+29.10/Rt.	8.2	13.0
4	8" X 4" Tee	2	C	1	1+92.40/Rt.	7.8	13.0
5	8" X 4" Tee	3	C	1	2+07.80/Rt.	7.9	13.0
6	8" X 4" Tee	3	C	1	2+68.40/Rt.	7.9	13.0
7	8" X 4" Tee	4	C	1	2+81.80/Rt.	8.0	13.0
8	8" X 4" Tee	4	C	1	3+43.80/Rt.	7.8	9.5
9	4" Stub	5	C	1	3+53.90/Lt.	8.3	7.5



BAUGHMAN COMPANY
 315 Ellis St.
 Wichita, KS 67211
 316-262-7271
 BaughmanCo.com

FALCON FALLS EAST 2ND ADDITION

LINE 1

SANITARY SEWER IMPROVEMENTS

PROJECT NUMBER:

DESIGN: AEG DRAWN: AJV

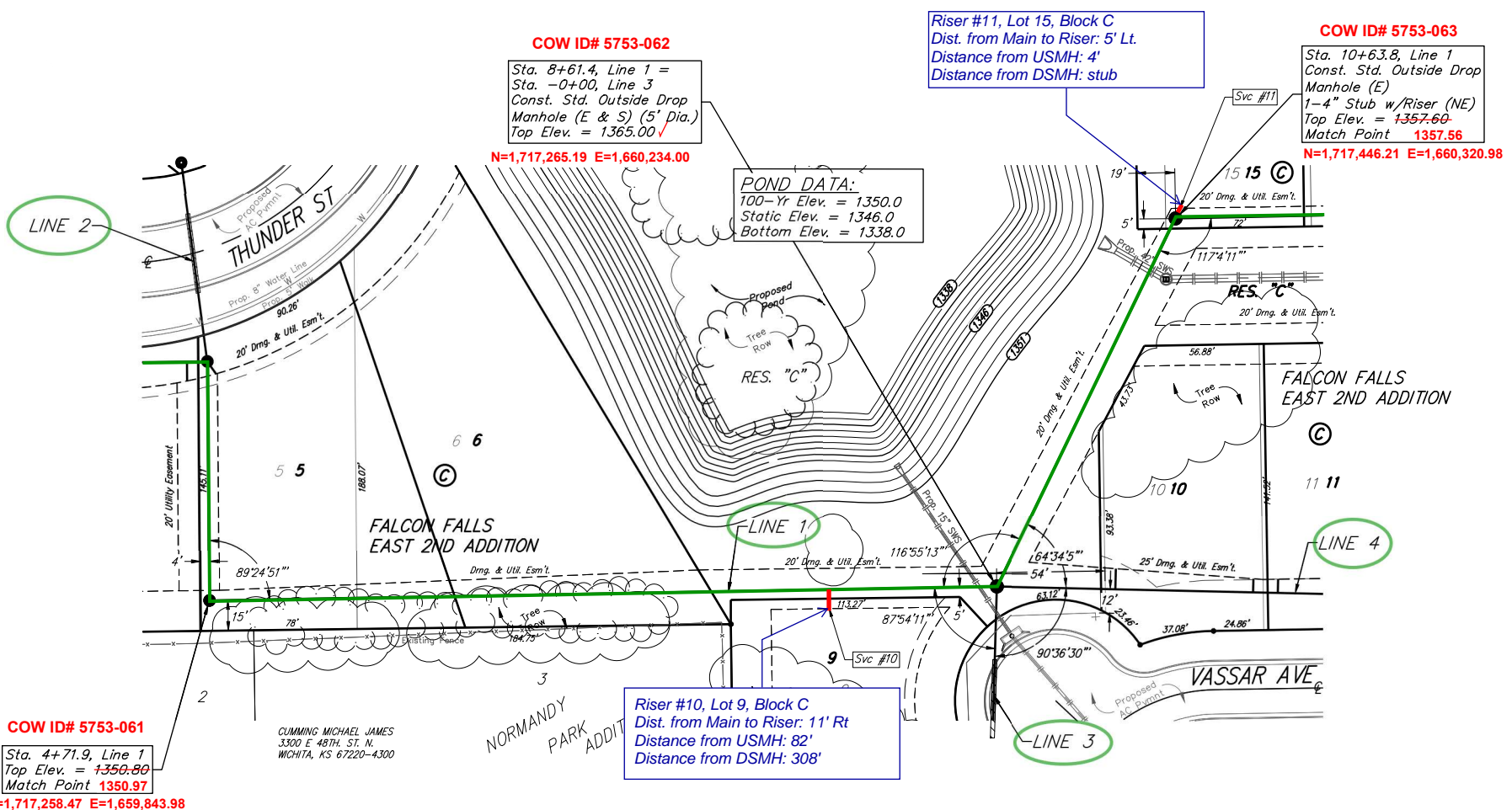
DATE: March 6, 2024

SHEET **02** OF **28**

REVISION: Adjusted Service Location for Re-Plan
 Date: 3/6/2024
 Br. AJV

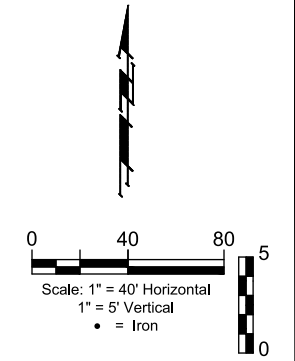
File: E:\Projects\Falcon Falls East 2nd_23-02-P865(Engineering)\Phase 1\SS_23-10-E627\SS Plans Rev.dwg

BENCHMARKS:
 Square cut in the center of headwall, southerly RCBC, ±82' north of the northeast corner of Lot 30, Block C, Falcon Falls 3rd/ Addition. Elev.=1344.07 NAVD 88
 Square cut in top of curb, center of east curb return of center island, Blackhawk St., 53' west of centerline intersection of Hillside Ave. and Blackhawk St. Elev.=1354.01 NAVD 88
 Square cut with cross, in hub guard, east side of Hillside Avenue, 110 feet south of and 27 west of the southwest corner of the northwest quarter, Section 23, Township 26 South, Range 1 East. Elev.=1355.29 NAVD 88



Existing trees which are in direct conflict with proposed new construction shall be removed by the Contractor ONLY with approval of the Engineer. Trees not in direct conflict with proposed new construction shall remain and be protected from damage. Cost shall be included in bid item "Site Clearing."

2-foot minimum vertical separation between water service lines and all sanitary sewer lines shall be maintained at crossings. 10-foot horizontal separation between water service lines and all sanitary sewer lines and manholes shall be maintained. Distances are to be measured from edge-to-edge, at the closest point.

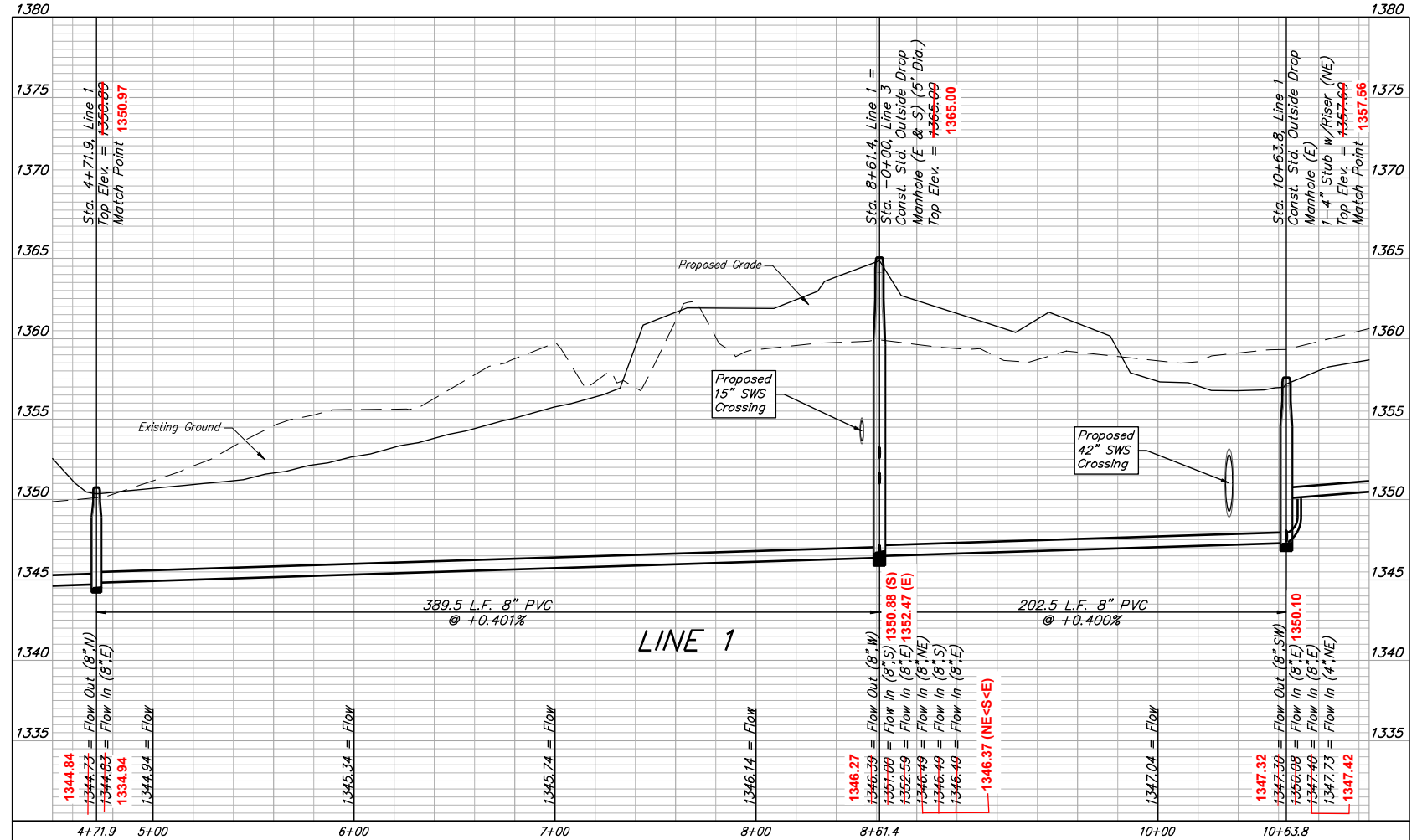


LEGEND

EX. Falcon Falls East 2nd Plat	Lot Line	---
	Lot #	13
PRO. Falcon Falls East 3rd Plat	Lot Line	---
	Lot #	13

NUMBER	TYPE	LOCATION			FOR INFORMATION ONLY		
		LOT NO.	BLOCK NO.	LINE NO.	STATION/DIRECTION	APPROXIMATE LENGTH 4" PIPE	VERTICAL
10	8" X 4" Tee	9	C	1	7+78.20/Rt.	13.6	9.5
11	4" Stub	15	C	1	10+63.80/Lt.	6.3	5.5

#10: N=1,717,252.55 E=1,660,152.23
 #11: N=1,717,451.03 E=1,660,325.01



BAUGHMAN COMPANY
 315 Ellis St.
 Wichita, KS 67211
 316-262-7271
 BaughmanCo.com

FALCON FALLS EAST 2ND ADDITION

LINE 1

SANITARY SEWER IMPROVEMENTS

PROJECT NUMBER:

DESIGN: AEG DRAWN: AJV
 DATE: March 6, 2024

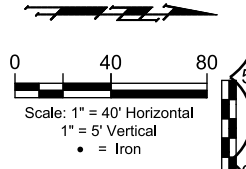
SHEET **03** OF **28**

File: E:\Projects\Falcon Falls East 2nd 23-02-P866\Engineering\Phase 1\SS_23-10-E627\SS Plans Rev.dwg

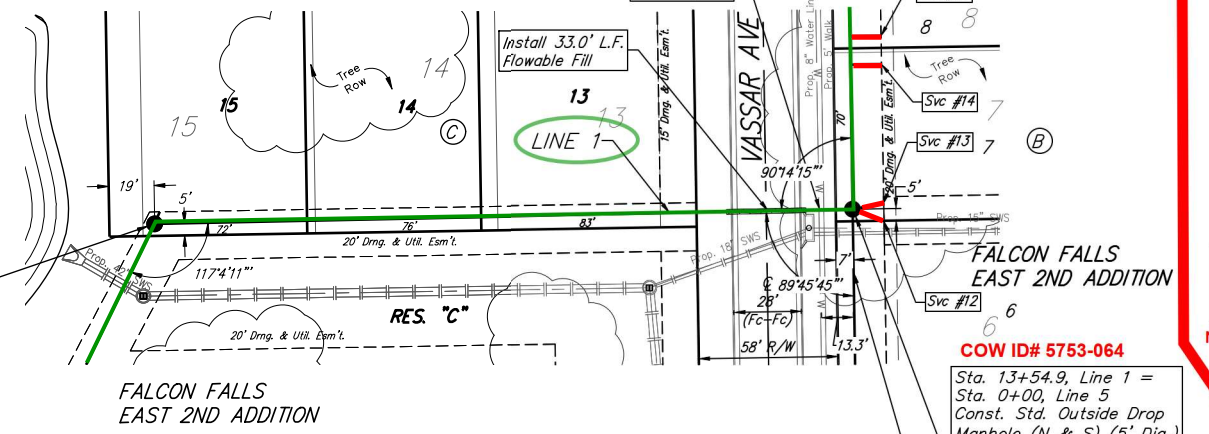
BENCHMARKS:
 Square cut in the center of headwall, southerly RCBC, ±82' north of the northeast corner of Lot 30, Block C, Falcon Falls 3rd/ Addition. Elev.=1344.07 NAVD 88
 Square cut in top of curb, center of east curb return of center island, Blackhawk St., 33' west of centerline intersection of Hillside Ave. and Blackhawk St. Elev.=1354.01 NAVD 88
 Square cut with cross, in hub guard, east side of Hillside Avenue, 110 feet south of and 27 feet west of the southwest corner of the northwest quarter, Section 23, Township 26 South, Range 1 East. Elev.=1355.29 NAVD 88

LEGEND

EX. Falcon Falls East 2nd Plat	Lot Line	---
	Lot #	13
PRO. Falcon Falls East 3rd Plat	Lot Line	---
	Lot #	13

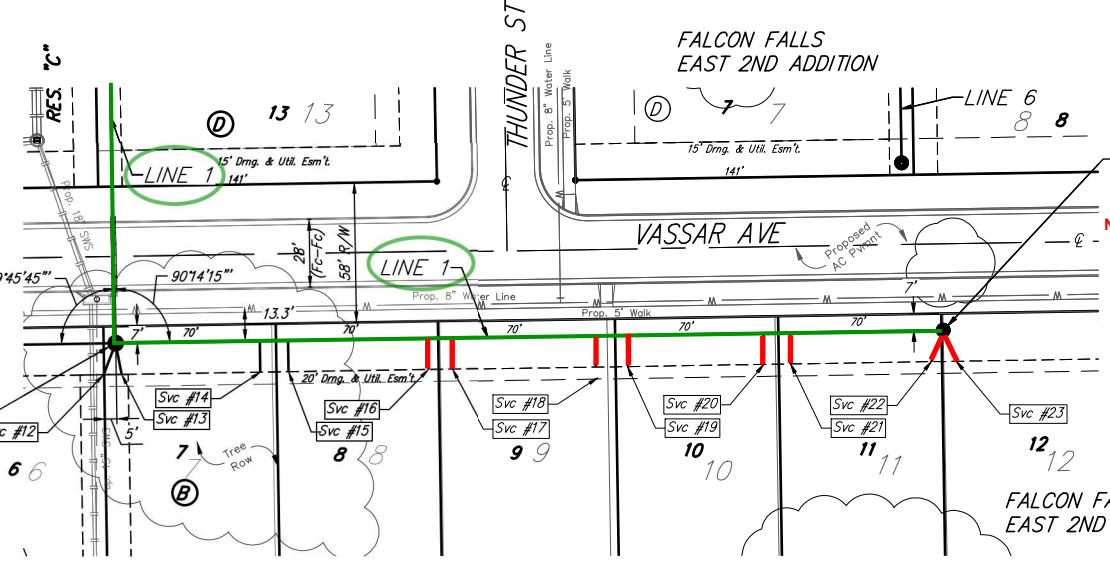


COW ID# 5753-063
 Sta. 10+63.8, Line 1
 Top Elev. = 1357.69
 Match Point 1357.56
 N=1,717,446.21 E=1,660,320.98



COW ID# 5753-064
 Sta. 13+54.9, Line 1 = Sta. 0+00, Line 5
 Const. Std. Outside Drop Manhole (N & S) (5' Dia.)
 2-4" Stub w/Riser (NE & SE)
 Top Elev. = 1368.29
 Match Point 1368.23
 N=1,717,453.71 E=1,660,613.77

COW ID# 5753-064
 Sta. 13+54.9, Line 1 = Sta. 0+00, Line 5
 Const. Std. Outside Drop Manhole (N & S) (5' Dia.)
 2-4" Stub w/Riser (NE & SE)
 Top Elev. = 1368.29
 Match Point 1368.23
 N=1,717,453.71 E=1,660,613.77



COW ID# 5753-065
 Sta. 16+99.9, End Line 1
 Const. Std. Manhole 2-4" Stub w/Riser (NE & SE)
 Top Elev. = 1369.88
 N=1,717,796.79 E=1,660,607.99

Riser No.	Distance from Main to Riser	Lot No.	Block No.	Distance from USMH	Distance from DSMH
12	14' Rt.	6	B	8'	stub
13	15' Rt.	7	B	8'	stub
14	13' Rt.	7	B	286'	57'
15	14' Rt.	8	B	274'	69'
16	15' Rt.	8	B	215'	129'
17	13' Rt.	9	B	202'	141'

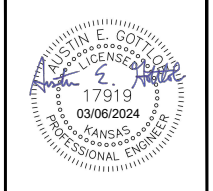
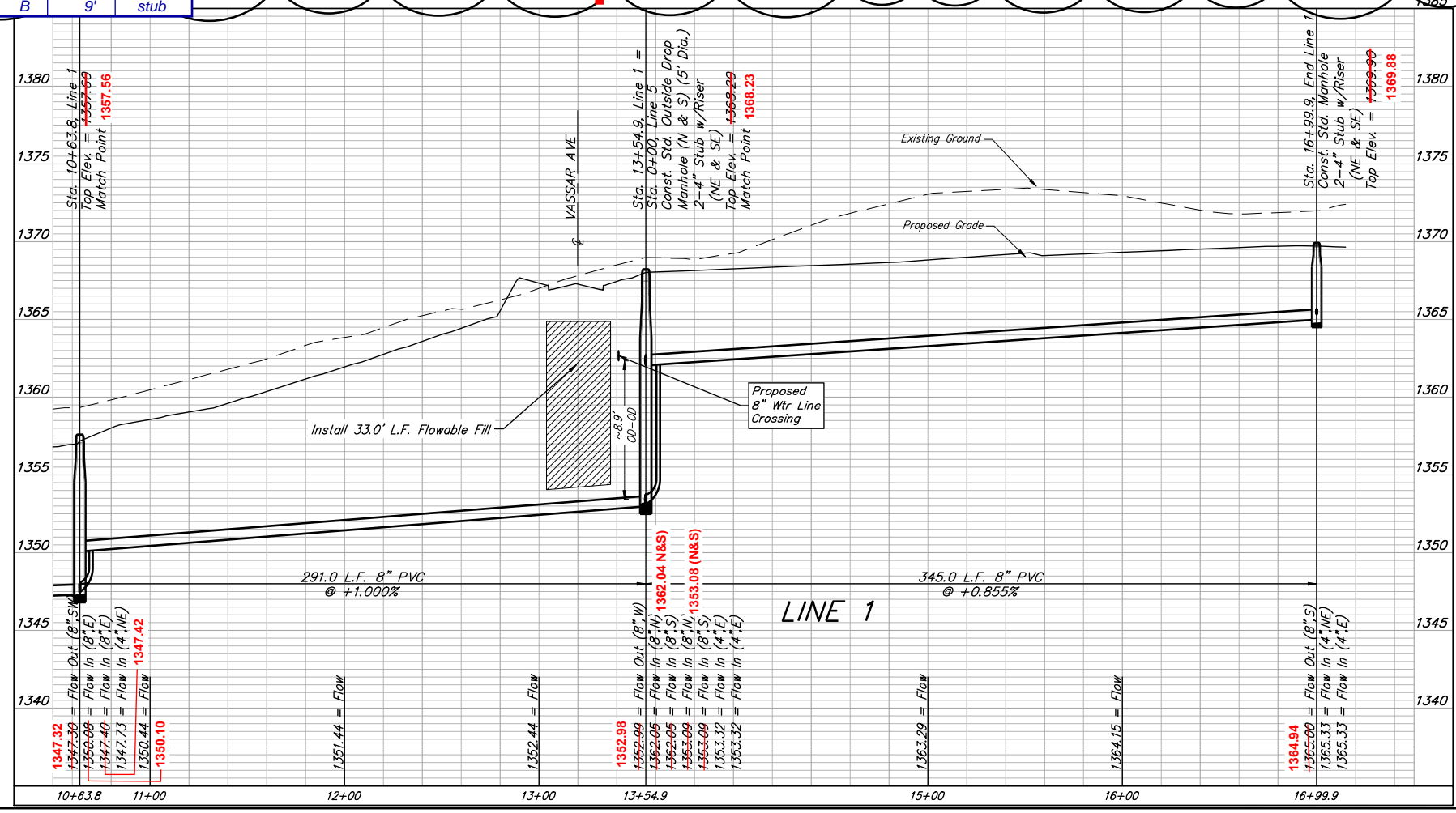
Riser No.	Distance from Main to Riser	Lot No.	Block No.	Distance from USMH	Distance from DSMH
18	15' Rt.	9	B	139'	204'
19	13' Rt.	10	B	131'	212'
20	14' Rt.	10	B	72'	271'
21	14' Rt.	11	B	64'	280'
22	15' Rt.	11	B	7'	stub
23	15' Rt.	12	B	9'	stub

All trench and manhole excavation areas from Sta. 13+54.9 to Sta. 16+99.9, Line 1 shall be backfilled with sand. The sand backfill shall be water-jetted and vibrated during backfilling. All costs shall be paid for as L.F. "Fill, Sand (Flushed & Vibrated)".

2-foot minimum vertical separation between water service lines and all sanitary sewer lines shall be maintained at crossings. 10-foot horizontal separation between water service lines and all sanitary sewer lines and manholes shall be maintained. Distances are to be measured from edge-to-edge, at the closest point.

NUMBER	TYPE	LOCATION				FOR INFORMATION ONLY	
		LOT NO.	BLOCK NO.	LINE NO.	STATION/DIRECTION	APPROXIMATE LENGTH 4" PIPE VERTICAL	HORIZONTAL
12	4" Stub	6	B	1	13+54.90/Rt.	11.3	14.0
13	4" Stub	7	B	1	13+54.90/Rt.	11.3	13.2
14	8" X 4" Tee	7	B	1	14+14.90/Rt.	1.3	13.0
15	8" X 4" Tee	8	B	1	14+26.60/Rt.	1.1	13.0
16	8" X 4" Tee	8	B	1	14+84.90/Rt.	1.1	13.0
17	8" X 4" Tee	9	B	1	14+94.90/Rt.	1.1	13.0
18	8" X 4" Tee	9	B	1	15+54.90/Rt.	1.0	13.0
19	8" X 4" Tee	10	B	1	15+68.10/Rt.	0.3	13.0
20	8" X 4" Tee	10	B	1	16+24.90/Rt.	0.0	13.0
21	8" X 4" Tee	11	B	1	16+36.10/Rt.	0.0	13.0
22	4" Stub	11	B	1	16+99.90/Rt.	0.4	14.0
23	4" Stub	12	B	1	16+99.90/Rt.	0.4	14.0

- #12: N=1,717,445.86 E=1,660,627.95
- #13: N=1,717,454.20 E=1,660,628.47
- #14: N=1,717,511.28 E=1,660,626.09
- #15: N=1,717,522.77 E=1,660,626.55
- #16: N=1,717,582.56 E=1,660,626.07
- #17: N=1,717,595.30 E=1,660,624.59
- #18: N=1,717,658.14 E=1,660,624.96
- #19: N=1,717,665.65 E=1,660,623.36
- #20: N=1,717,725.14 E=1,660,623.42
- #21: N=1,717,733.46 E=1,660,622.59
- #22: N=1,717,789.74 E=1,660,623.53
- #23: N=1,717,805.78 E=1,660,622.92



BAUGHMAN COMPANY
 315 Ellis St.
 Wichita, KS 67211
 316-262-7271
 BaughmanCo.com

FALCON FALLS EAST 2ND ADDITION

LINE 1

SANITARY SEWER IMPROVEMENTS
 PROJECT NUMBER:

DESIGN: AEG DRAWN: AJV

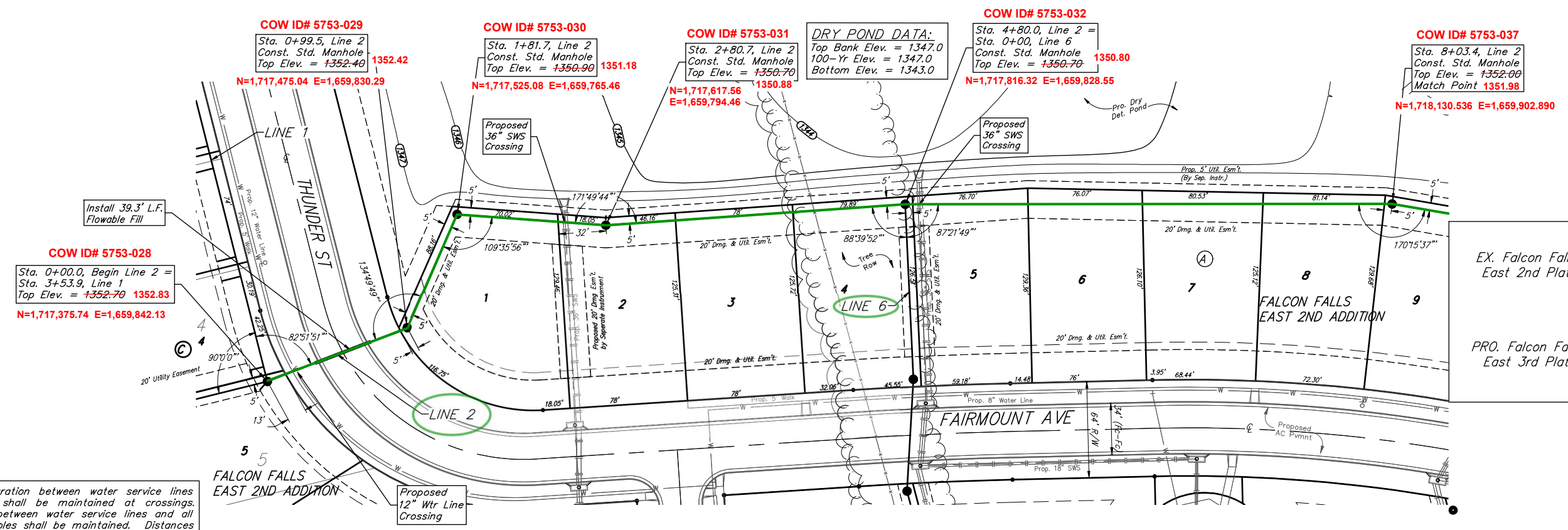
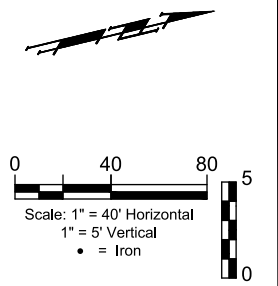
DATE: March 6, 2024

SHEET **04** OF **28**

REVISION: Adjusted Service Location for Re-Plot
 Date: 3/6/2024
 By: AJV

File: E:\Projects\Falcon Falls East 2nd 23-02-P8616(Engineering)\Phase 1\SS_23-10-E627\SS Plans Rev.dwg

BENCHMARKS:
 Square cut in the center of headwall, southerly RCBC, ±82' north of the northeast corner of Lot 30, Block C, Falcon Falls 3rd/ Addition. Elev.=1344.07 NAVD 88
 Square cut in top of curb, center of east curb return of center island, Blackhawk St., 53' west of centerline intersection of Hillside Ave. and Blackhawk St. Elev.=1354.01 NAVD 88
 Square cut with cross, in hub guard, east side of Hillside Avenue, 110 feet south of and 27 west of the southwest corner of the northwest quarter, Section 23, Township 26 South, Range 1 East. Elev.=1355.29 NAVD 88

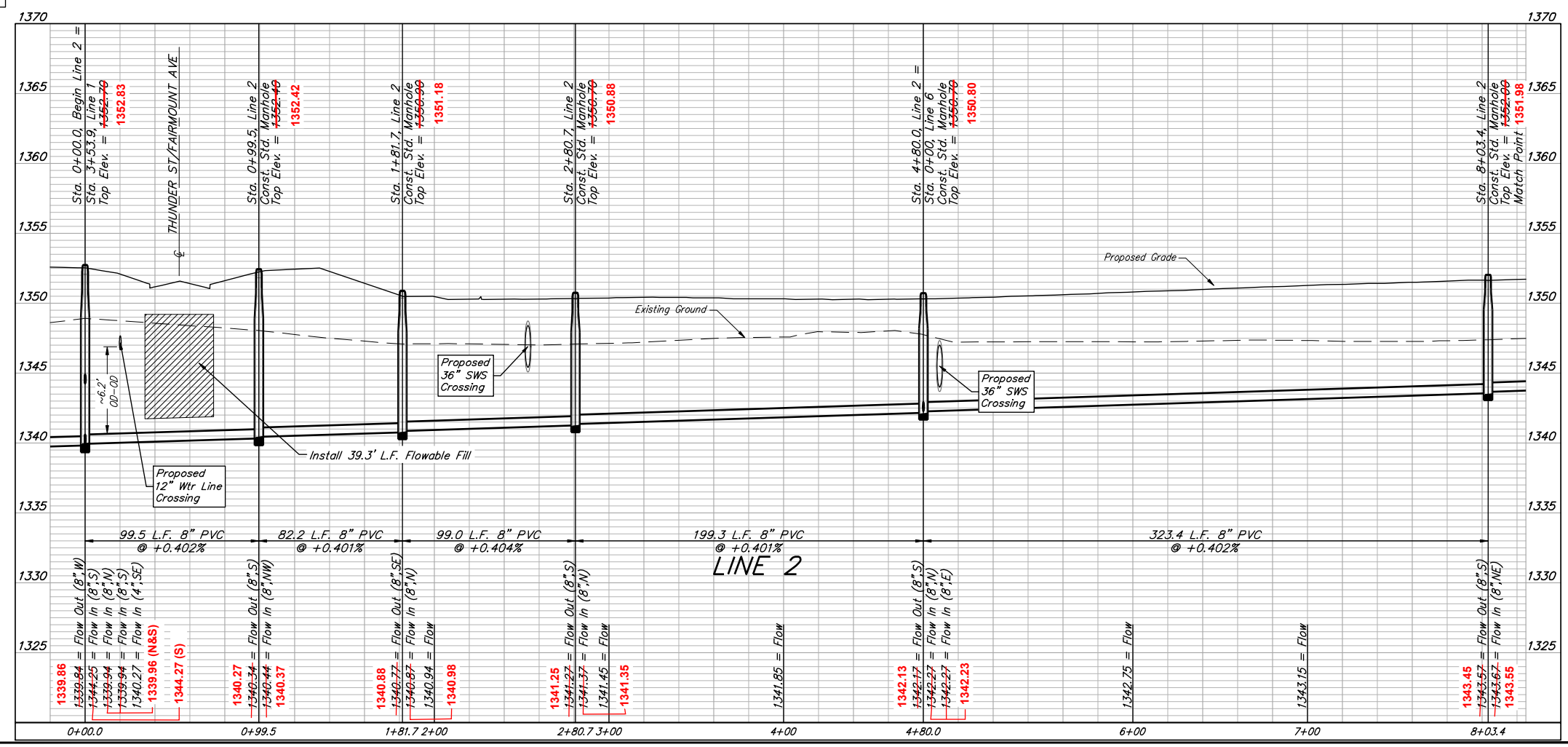


LEGEND

EX. Falcon Falls East 2nd Plat	Lot Line	---
	Lot #	13
PRO. Falcon Falls East 3rd Plat	Lot Line	---
	Lot #	13

2-foot minimum vertical separation between water service lines and all sanitary sewer lines shall be maintained at crossings. 10-foot horizontal separation between water service lines and all sanitary sewer lines and manholes shall be maintained. Distances are to be measured from edge-to-edge, at the closest point.

Existing trees which are in direct conflict with proposed new construction shall be removed by the Contractor ONLY with approval of the Engineer. Trees not in direct conflict with proposed new construction shall remain and be protected from damage. Cost shall be included in bid item "Site Clearing."



BAUGHMAN COMPANY
 315 Ellis St.
 Wichita, KS 67211
 316-262-7271
 BaughmanCo.com

FALCON FALLS EAST 2ND ADDITION

LINE 2

SANITARY SEWER IMPROVEMENTS

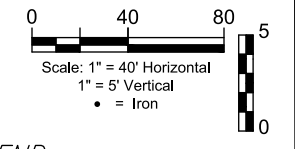
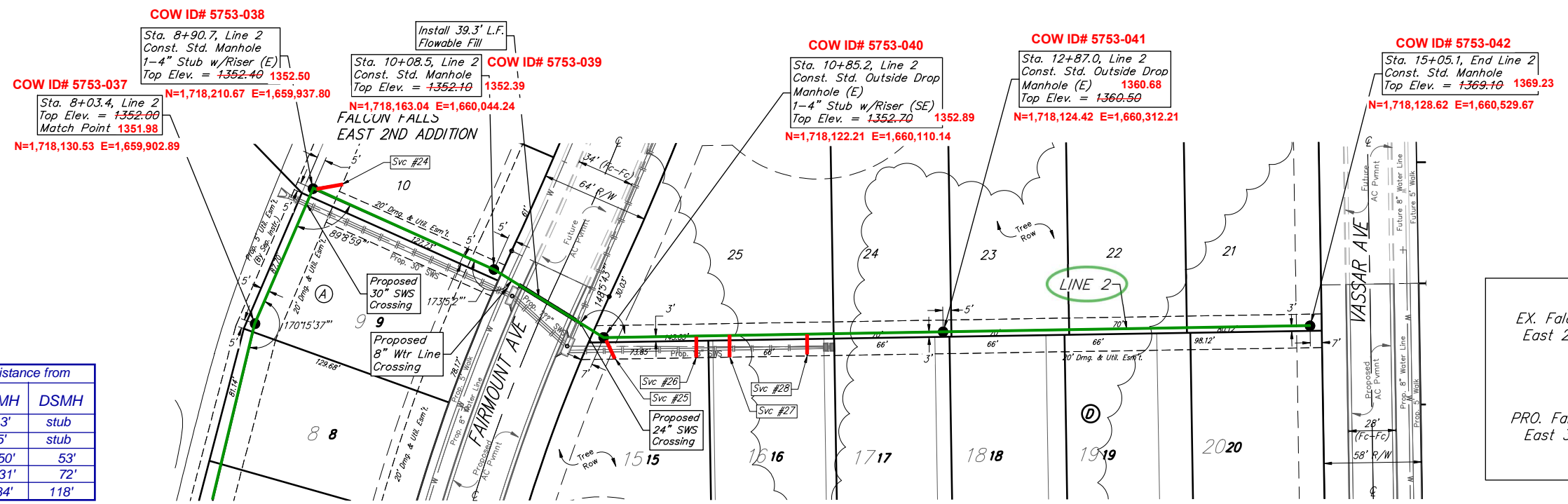
PROJECT NUMBER: _____

DESIGN: AEG DRAWN: AJV
 DATE: March 6, 2024

SHEET **05** OF **28**

File: E:\Projects\Falcon Falls East 2nd 23-02-P866\Engineering\Phase 1\SS_23-10-E627\SS Plans Rev.dwg

BENCHMARKS:
 Square cut in the center of headwall, southerly R/CBC, ±82' north of the northeast corner of Lot 30, Block C, Falcon Falls 3rd Addition. Elev.=1344.01 NAVD 88
 Square cut in top of curb, center of east curb return of center island, Blackhawk St., 53' west of centerline intersection of Hillside Ave. and Blackhawk St. Elev.=1354.01 NAVD 88
 Square cut with cross, in hub guard, east side of Hillside Avenue, 110 feet south of and 27 west of the southwest corner of the northwest quarter, Section 23, Township 26 South, Range 1 East. Elev.=1355.29 NAVD 88



LEGEND

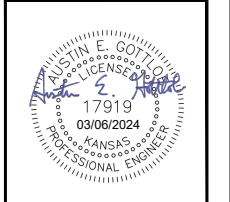
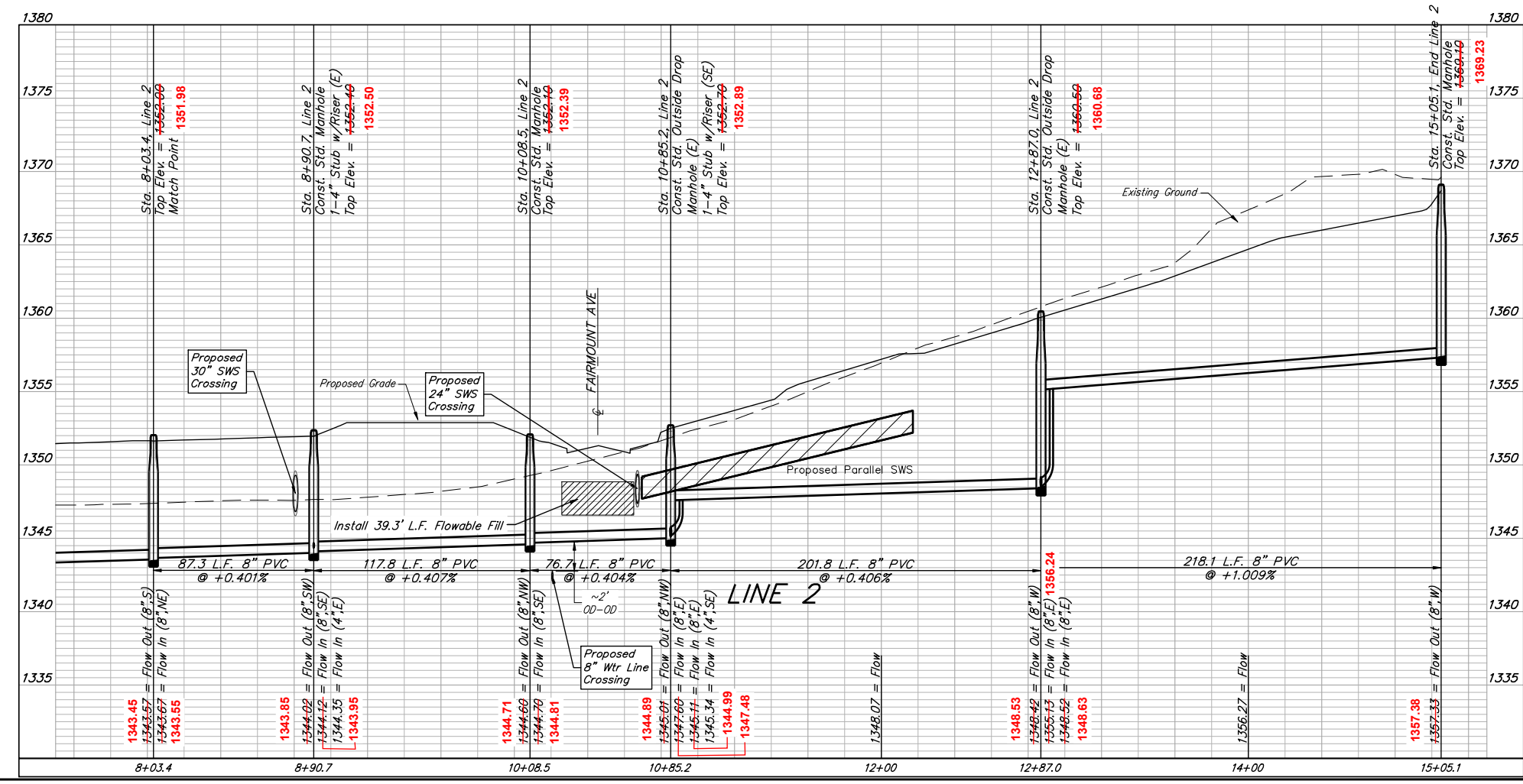
EX. Falcon Falls East 2nd Plat	Lot Line	---
	Lot #	13
PRO. Falcon Falls East 3rd Plat	Lot Line	---
	Lot #	13

Riser No.	Distance from Main to Riser	Lot No.	Block No.	Distance from USMH	Distance from DSMH
24	12' Rt.	10	A	13'	stub
25	15' Rt.	15	D	15'	stub
26	15' Rt.	15	D	150'	53'
27	14' Rt.	16	D	131'	72'
28	14' Rt.	16	D	84'	118'

NUMBER	TYPE	LOCATION				FOR INFORMATION ONLY	
		LOT NO.	BLOCK NO.	LINE NO.	STATION/DIRECTION	APPROXIMATE LENGTH 4" PIPE	
						VERTICAL	HORIZONTAL
24	4" Stub	10	A	2	8+90.70/Rt.	4.3	17.7
25	4" Stub	15	D	2	10+85.20/Rt.	6.9	14.6
26	8" X 4" Tee	15	D	2	11+40.00/Rt.	3.8	13.0
27	8" X 4" Tee	16	D	2	11+60.00/Rt.	3.3	13.0
28	8" X 4" Tee	16	D	2	12+06.00/Rt.	4.8	13.0

#24 N=1,718,216.25 E=1,659,955.43
 #25 N=1,718,107.60 E=1,660,118.73
 #26 N=1,718,108.18 E=1,660,162.83
 #27 N=1,718,108.90 E=1,660,181.83
 #28 N=1,718,109.32 E=1,660,228.53

2-foot minimum vertical separation between water service lines and all sanitary sewer lines shall be maintained at crossings. 10-foot horizontal separation between water service lines and all sanitary sewer lines and manholes shall be maintained. Distances are to be measured from edge-to-edge, at the closest point.



BAUGHMAN COMPANY
 315 Ellis St.
 Wichita, KS 67211
 316-262-7271
 BaughmanCo.com

FALCON FALLS EAST 2ND ADDITION
LINE 2
 SANITARY SEWER IMPROVEMENTS
 PROJECT NUMBER:
 DESIGN: AEG DRAWN: AJV
 DATE: March 6, 2024
 SHEET **06** OF **28**

File: E:\Projects\Falcon Falls East 2nd 23-02-P866\Engineering\Phase 1\SS_23-10-EG27\SS Plans Rev.dwg

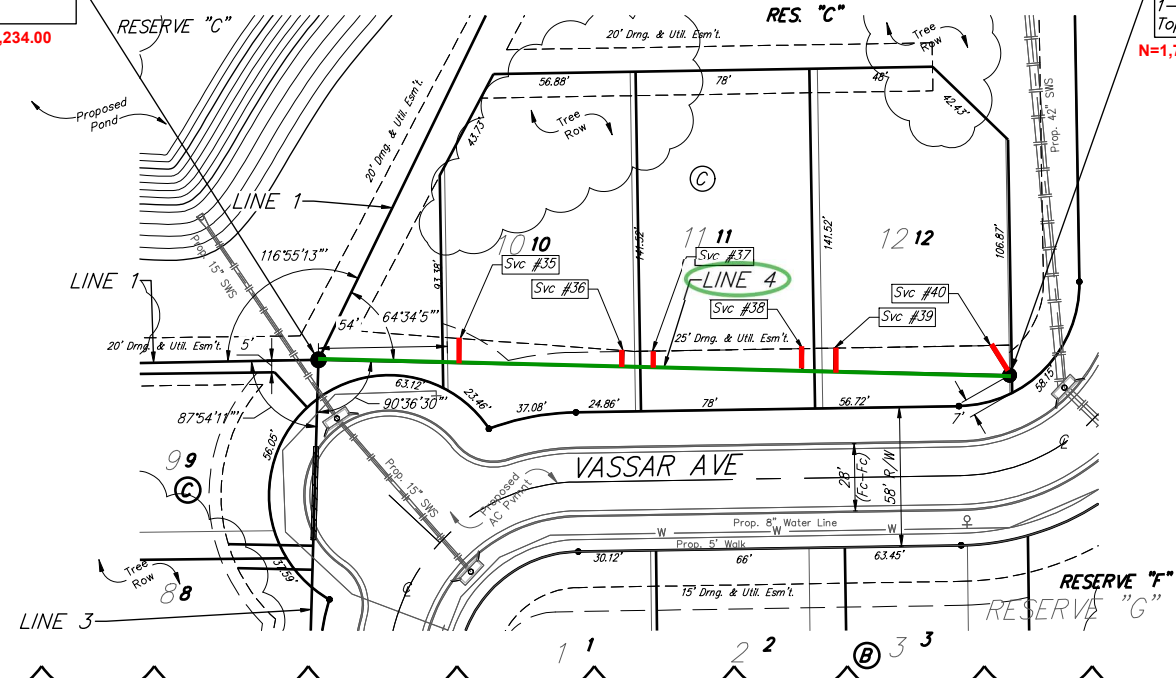
BENCHMARKS:
 Square cut in the center of headwall, southerly RCB, ±82' north of the northeast corner of Lot 30, Block C, Falcon Falls 3rd/ Addition. Elev.=1344.07 NAVD 88
 Square cut in top of curb, center of east curb return of center island, Blackhawk St, 53' west of centerline intersection of Hillside Ave. and Blackhawk St. Elev.=1354.01 NAVD 88
 Square cut with cross, in hub guard, east side of Hillside Avenue, 110 feet south of and 27 west of the southwest corner of the northwest quarter, Section 23, Township 26 South, Range 1 East. Elev.=1355.29 NAVD 88

COW ID# 5753-062
 Sta. -0+00.0, Begin Line 4 = Sta. 8+61.4, Line 1
 Top Elev. = 1365.00
N=1,717,265.19 E=1,660,234.00

POND DATA:
 100-Yr Elev. = 1350.0
 Static Elev. = 1346.0
 Bottom Elev. = 1338.0

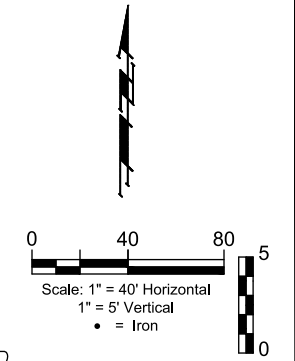
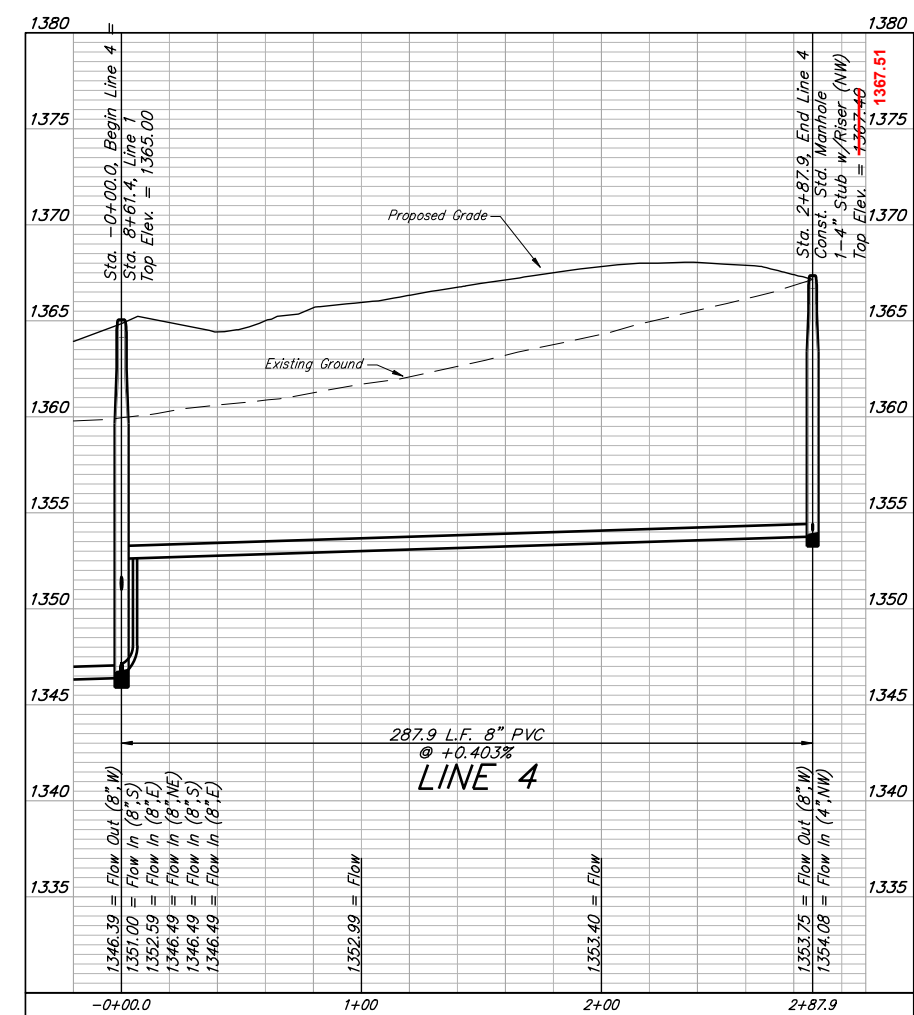
COW ID# 5753-068
 Sta. 2+87.9, End Line 4 Const. Std. Manhole
 1-4" Stub w/Riser (NW)
 Top Elev. = 1367.40 1367.51
N=1,717,259.01 E=1,660,521.16

Riser No.	Distance from Main to Riser	Lot No.	Block No.	Distance from	
				USMH	DSMH
35	13' Lt.	10	C	228'	59'
36	9' Lt.	10	C	164'	124'
37	9' Lt.	11	C	148'	140'
38	11' Lt.	11	C	88'	200'
39	11' Lt.	12	C	74'	214'
40	13' Lt.	12	C	10'	stub



NUMBER	TYPE	LOCATION				FOR INFORMATION ONLY	
		LOT NO.	BLOCK NO.	LINE NO.	STATION/DIRECTION	APPROXIMATE LENGTH 4" PIPE	
						VERTICAL	HORIZONTAL
35	8" X 4" Tee	10	C	4	0+58.80/Lt.	7.9	10.2
36	8" X 4" Tee	10	C	4	1+26.80/Lt.	8.8	6.7
37	8" X 4" Tee	11	C	4	1+39.00/Lt.	8.7	6.8
38	8" X 4" Tee	11	C	4	2+01.60/Lt.	9.7	9.2
39	8" X 4" Tee	12	C	4	2+14.90/Lt.	10.1	9.7
40	4" Stub	12	C	4	2+87.90/Lt.	9.8	14.7

#35 N=1,717,277.01 E=1,660,293.18
#36 N=1,717,271.86 E=1,660,357.90
#37 N=1,717,270.90 E=1,660,373.72
#38 N=1,717,271.94 E=1,660,433.83
#39 N=1,717,271.75 E=1,660,447.91
#40 N=1,717,272.30 E=1,660,511.95



LEGEND

EX. Falcon Falls East 2nd Plat	Lot Line	---
	Lot #	13
PRO. Falcon Falls East 3rd Plat	Lot Line	---
	Lot #	13

All trench and manhole excavation areas from Sta. 0+00.0 to Sta. 2+87.9, Line 4 shall be backfilled with sand. The sand backfill shall be water-jetted and vibrated during backfilling. All costs shall be paid for as L.F. "Fill, Sand (Flushed & Vibrated)".

2-foot minimum vertical separation between water service lines and all sanitary sewer lines shall be maintained at crossings. 10-foot horizontal separation between water service lines and all sanitary sewer lines and manholes shall be maintained. Distances are to be measured from edge-to-edge, at the closest point.



BAUGHMAN COMPANY
 315 Ellis St.
 Wichita, KS 67211
 316-262-7271
 BaughmanCo.com

FALCON FALLS EAST 2ND ADDITION

LINE 4

SANITARY SEWER IMPROVEMENTS

PROJECT NUMBER:

DESIGN: AEG DRAWN: AJV

DATE: March 6, 2024

SHEET **08** OF **28**

REVISION: Adjusted Service location for Res-Plat
 Date: 3/6/2024
 By: AJV

BENCHMARKS:
 Square cut in the center of highway, southerly R/CB, ±62' north of the northeast corner of Lot 30, Block C, Falcon Falls 3rd/ Addition. Elev.=1344.07 NAVD 88
 Square cut in top of curb, center of east curb return of center island, Blackhawk St. 53' west of centerline intersection of Hillside Ave. and Blackhawk St. Elev.=1354.01 NAVD 88
 Square cut with cross, in hub guard, east side of Hillside Avenue, 110 feet south of and 27 west of the southwest corner of the northwest quarter, Section 23, Township 26 South, Range 1 East. Elev.=1355.29 NAVD 88

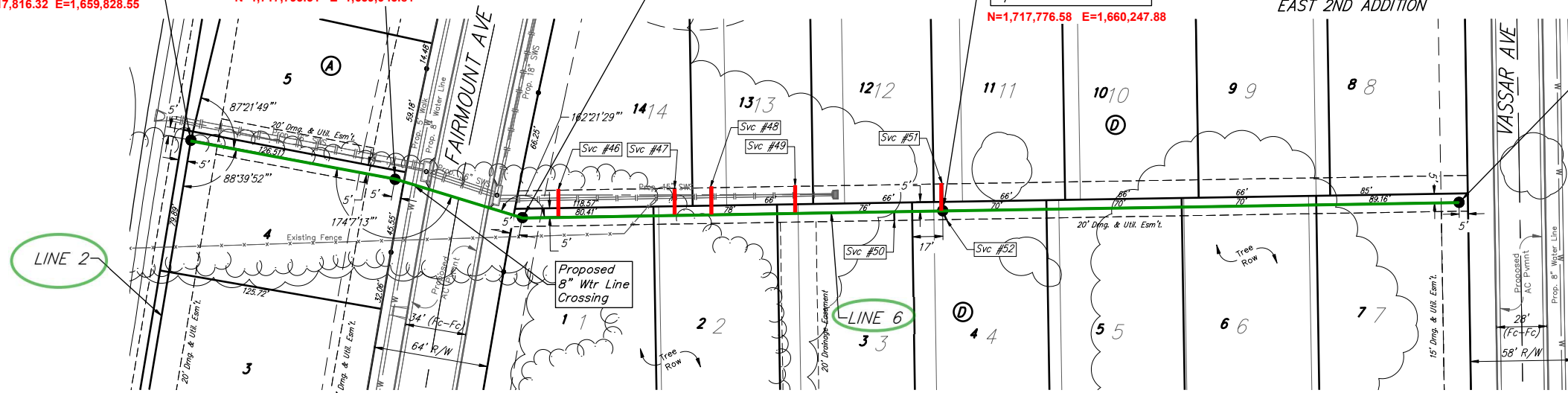
COW ID# 5753-032
 Sta. 0+00.0, Begin Line 6 =
 Sta. 4+80, Line 2 1350.80
 Top Elev. = +350.70
 N=1,717,816.32 E=1,659,828.55

COW ID# 5753-033
 Sta. 1+16.4, Line 6
 Const. Std. Manhole
 Top Elev. = +350.20 1350.31
 N=1,717,793.31 E=1,659,943.81

COW ID# 5753-034
 Sta. 1+90.8, Line 6
 Const. Std. Manhole
 Top Elev. = +350.60 1350.59
 N=1,717,773.66 E=1,660,012.22

COW ID# 5753-035
 Sta. 4+26.1, Line 6
 Const. Std. Outside Drop
 Manhole (E)
 2-4" Stub w/Riser
 (N & SE) 1359.14
 Top Elev. = +359.20
 N=1,717,776.58 E=1,660,247.88

COW ID# 5753-036
 Sta. 7+15.3, End Line 6
 Const. Std. Manhole 1368.88
 Top Elev. = +368.90
 N=1,717,781.30 E=1,660,537.51



LEGEND

EX. Falcon Falls East 2nd Plat
 Lot Line
 Lot # 13

PRO. Falcon Falls East 3rd Plat
 Lot Line
 Lot # 13

Scale: 1" = 40' Horizontal
 1" = 5' Vertical
 • = Iron

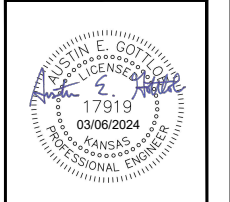
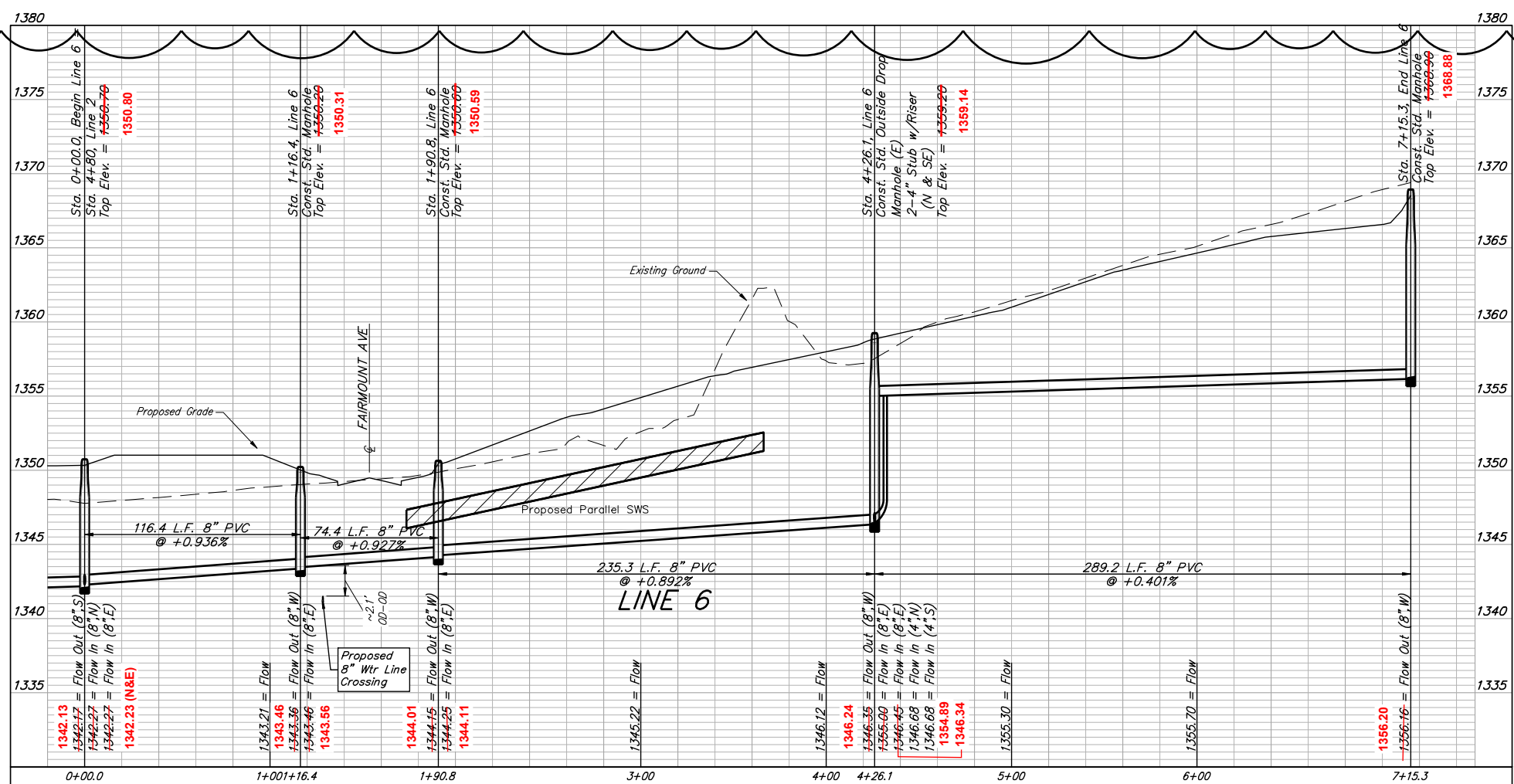
NUMBER	TYPE	LOCATION				FOR INFORMATION ONLY	
		LOT NO.	BLOCK NO.	LINE NO.	STATION/DIRECTION	APPROXIMATE LENGTH 4" PIPE	
46	8" X 4" Tee	14	D	6	2+11.00/Lt.	2.9	15.0
47	8" X 4" Tee	14	D	6	2+76.30/Lt.	4.8	15.0
48	8" X 4" Tee	13	D	6	2+96.30/Lt.	4.7	15.0
49	8" X 4" Tee	13	D	6	3+43.80/Lt.	5.7	15.0
50	8" X 4" Tee	3	D	6	3+99.00/Rt.	6.9	5.0
51	4" Stub	12	D	6	4+26.10/Lt.	7.9	15.0
52	4" Stub	4	D	6	4+26.10/Rt.	8.5	5.4

#46: N=1,717,789.68 E=1,660,033.81
 #47: N=1,717,789.90 E=1,660,099.69
 #48: N=1,717,791.78 E=1,660,118.11
 #49: N=1,717,792.16 E=1,660,166.10
 #50: N=1,717,767.12 E=1,660,221.70
 #51: N=1,717,792.30 E=1,660,247.94

Riser No.	Distance from Main to Riser	Lot No.	Block No.	Distance from	
				USMH	DSMH
46	16' Lt.	14	D	214'	22'
47	15' Lt.	14	D	148'	88'
48	17' Lt.	13	D	130'	106'
49	17' Lt.	13	D	82'	154'
50	9' Rt.	3	D	26'	209'
51	16' Lt.	12	D	stub	stub
52	7' Rt.	4	D	3'	stub

Existing trees which are in direct conflict with proposed new construction shall be removed by the Contractor ONLY with approval of the Engineer. Trees not in direct conflict with proposed new construction shall remain and be protected from damage. Cost shall be included in bid item "Site Clearing."

2-foot minimum vertical separation between water service lines and all sanitary sewer lines shall be maintained at crossings. 10-foot horizontal separation between water service lines and all sanitary sewer lines and manholes shall be maintained. Distances are to be measured from edge-to-edge, at the closest point.

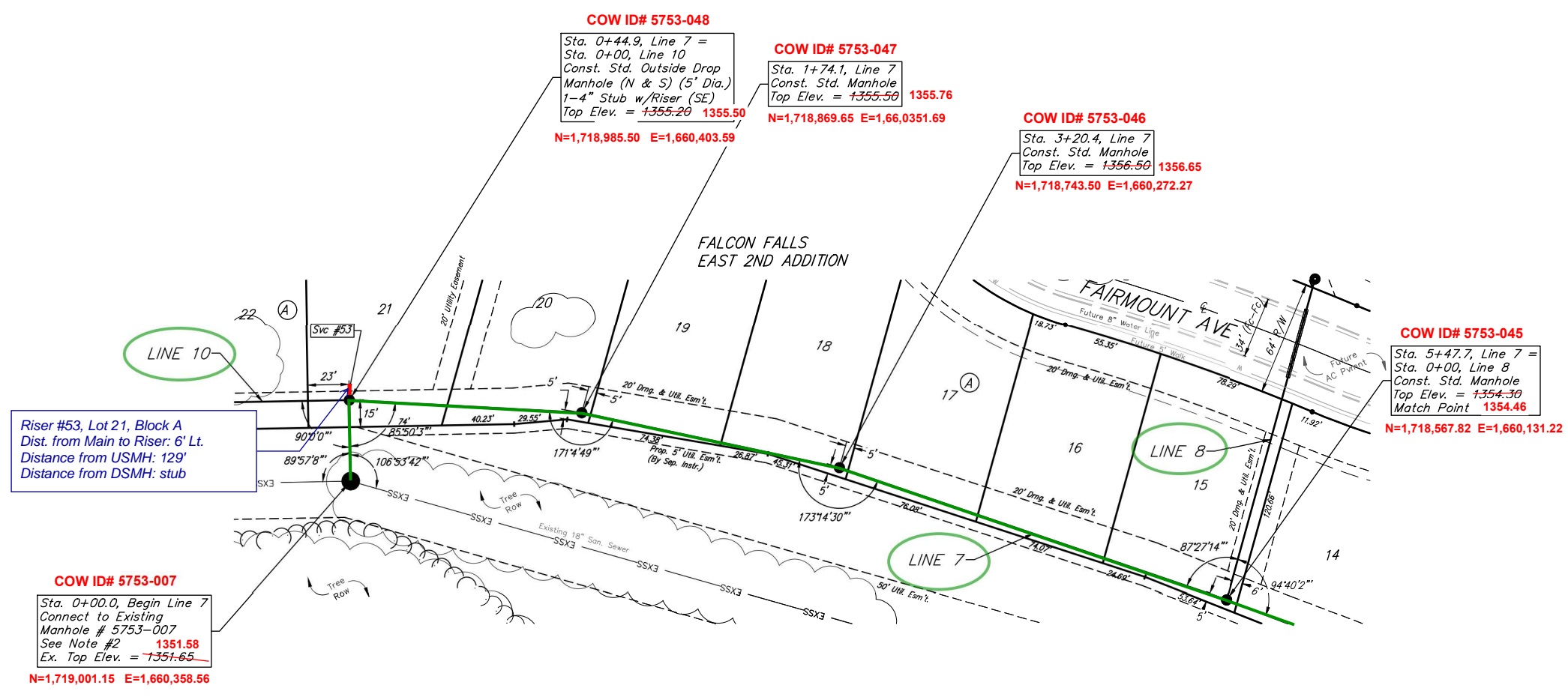


BAUGHMAN COMPANY
 315 Ellis St.
 Wichita, KS 67211
 316-262-7271
 BaughmanCo.com

FALCON FALLS EAST 2ND ADDITION
LINE 6
 SANITARY SEWER IMPROVEMENTS
 PROJECT NUMBER:
 DESIGN: AEG DRAWN: AJV
 DATE: March 6, 2024
 SHEET 10 OF 28

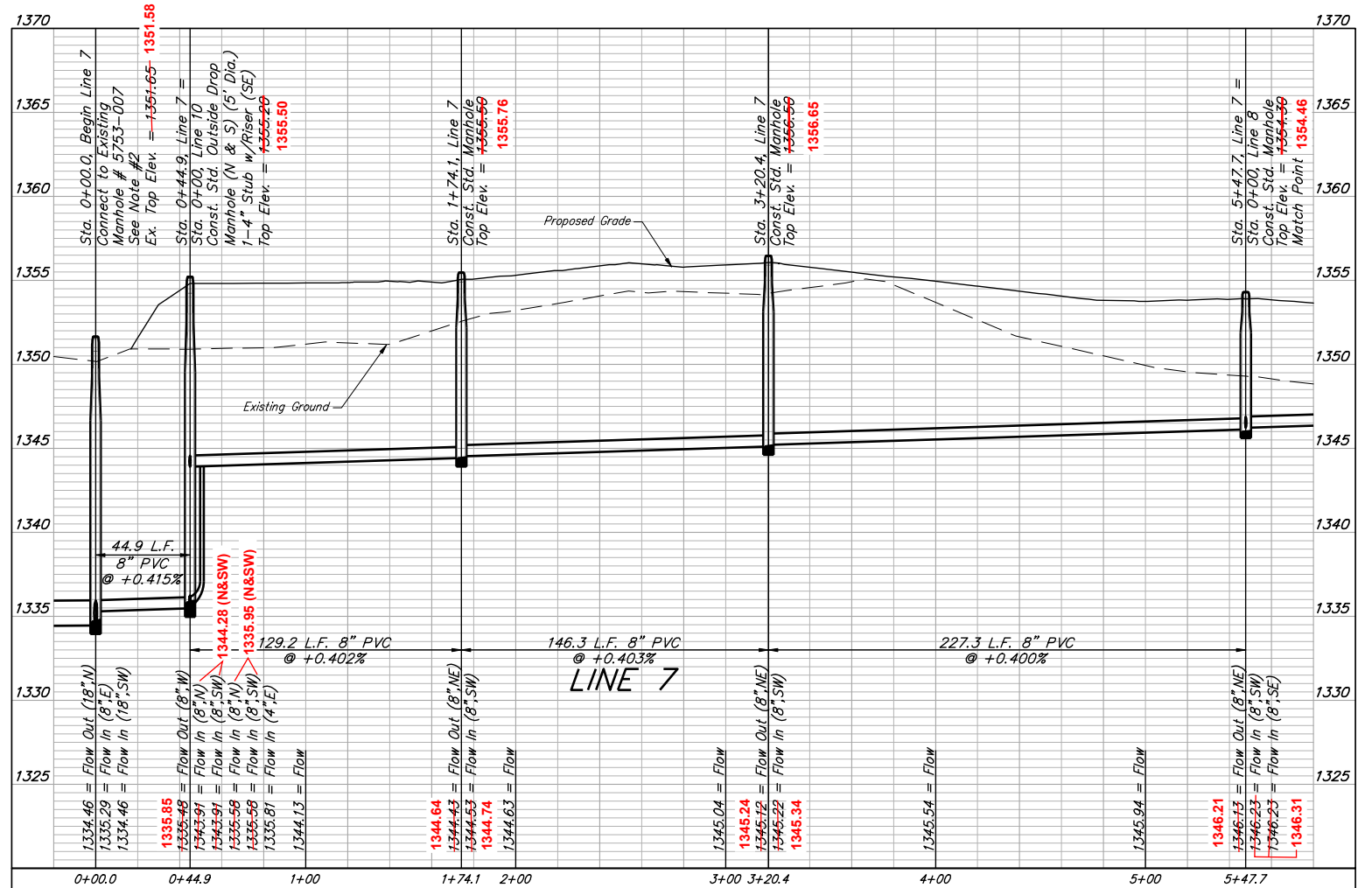
REVISION: Adjusted Service Location for Re-Flat
 Date: 3/6/2024
 By: AVJ
 File: E:\Projects\Falcon Falls East 2nd 23-02-P866\Engineering\Phase 1\SS_23-10-EG27\SS Plans Rev.dwg

BENCHMARKS:
 Square cut in the center of headwall, southerly RCBC, ±82' north of the northeast corner of Lot 30, Block C, Falcon Falls 3rd/ Addition. Elev.=1344.07 NAVD 88
 Square cut in top of curb, center of east curb return of center island, Blackhawk St., 53' west of centerline intersection of Hillside Ave. and Blackhawk St. Elev.=1354.01 NAVD 88
 Square cut with cross, in hub guard, east side of Hillside Avenue, 110 feet south of and 27 west of the southwest corner of the northwest quarter, Section 23, Township 26 South, Range 1 East. Elev.=1355.20 NAVD 88

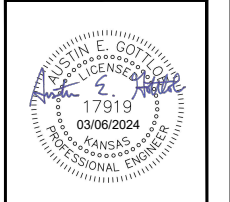


NUMBER	TYPE	LOCATION				FOR INFORMATION ONLY	
		LOT NO.	BLOCK NO.	LINE NO.	STATION/DIRECTION	APPROXIMATE LENGTH 4" PIPE	VERTICAL
53	4" Stub	21	A	7	0+44.90/Lt.	15.3	5.0

SRV 53: N=1,718,984.75 E=1,660,409.42



Existing trees which are in direct conflict with proposed new construction shall be removed by the Contractor ONLY with approval of the Engineer. Trees not in direct conflict with proposed new construction shall remain and be protected from damage. Cost shall be included in bid item "Site Clearing."



BAUGHMAN COMPANY
 315 Ellis St.
 Wichita, KS 67211
 316-262-7271
 BaughmanCo.com

FALCON FALLS EAST 2ND ADDITION

LINE 7

SANITARY SEWER IMPROVEMENTS

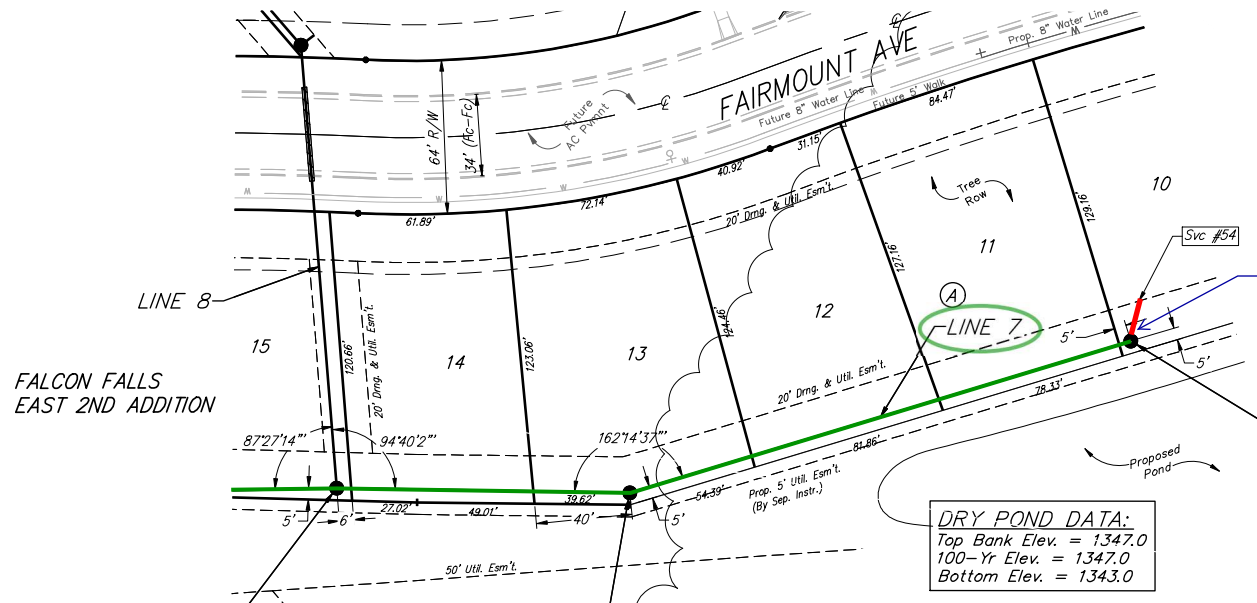
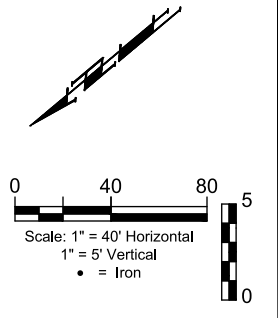
PROJECT NUMBER:

DESIGN: AEG DRAWN: AJV
 DATE: March 6, 2024

SHEET **11** OF **28**

File: E:\Projects\Falcon Falls East 2nd 23-02-P866\Engineering\Phase 1\SS_23-10-EG27\SS Plans Rev.dwg

BENCHMARKS:
 Square cut in the center of headwall, southerly RCBC, ±82' north of the northeast corner of Lot 30, Block C, Falcon Falls 3rd/ Addition. Elev.=1344.07 NAVD 88
 Square cut in top of curb, center of east curb, return of center island, Blackhawk St., 53' west of centerline intersection of Hillside Ave. and Blackhawk St. Elev.=1354.01 NAVD 88
 Square cut with cross, in hub guard, east side of Hillside Avenue, 110 feet south of and 27 west of the southwest corner of the northwest quarter, Section 23, Township 26 South, Range 1 East. Elev.=1355.29 NAVD 88



Riser #54, Lot 10, Block A
 Dist. from Main to Riser: 17' Lt.
 Distance from USMH: 9'
 Distance from DSMH: stub

COW ID# 5753-043
 Sta. 8+88.0, End Line 7
 Const. Std. Manhole
 1-4" Stub w/Riser (SE)
 Top Elev. = 1352.50 1352.81
 N=1,718,274.51 E=1,659,964.65

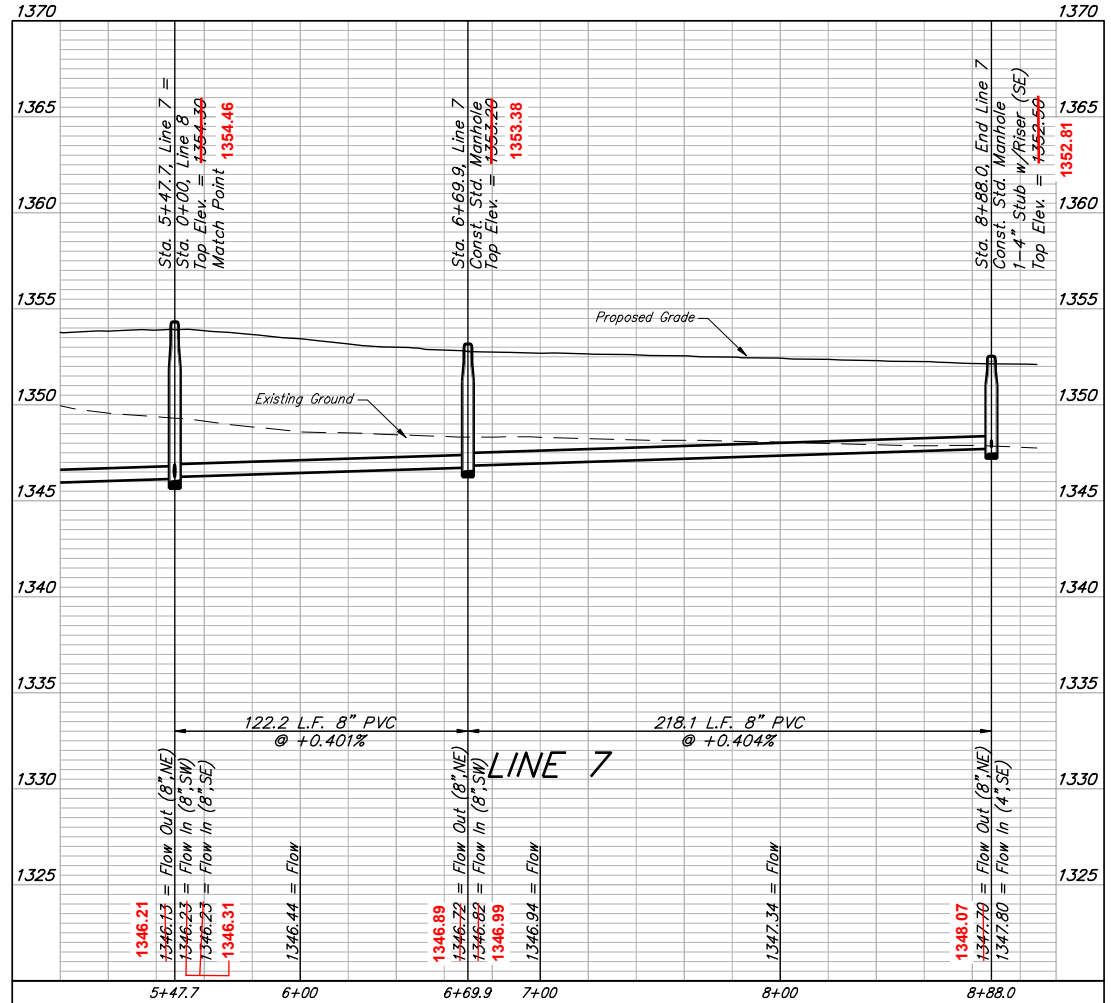
DRY POND DATA:
 Top Bank Elev. = 1347.0
 100-Yr Elev. = 1347.0
 Bottom Elev. = 1343.0

COW ID# 5753-044
 Sta. 6+69.9, Line 7
 Const. Std. Manhole
 Top Elev. = 1353.20 1353.38
 N=1,718,475.79 E=1,660,051.54

COW ID# 5753-045
 Sta. 5+47.7, Line 7 =
 Sta. 0+00, Line 8
 Top Elev. = 1354.39 1354.46
 Match Point
 N=1,718,567.82 E=1,660,131.22

NUMBER	TYPE	LOCATION				FOR INFORMATION ONLY	
		LOT NO.	BLOCK NO.	LINE NO.	STATION/DIRECTION	APPROXIMATE LENGTH 4" PIPE	VERTICAL
54	4" Stub	10	A	7	8+88.00/Lt.	1.1	17.1

SRV 54: N=1,718,259.86 E=1,659,976.91



BAUGHMAN COMPANY
 315 Ellis St.
 Wichita, KS 67211
 316-262-7271
 BaughmanCo.com

FALCON FALLS EAST 2ND ADDITION

LINE 7

SANITARY SEWER IMPROVEMENTS

PROJECT NUMBER:

DESIGN: AEG DRAWN: AJV
 DATE: March 6, 2024

SHEET **12** OF **28**

File: E:\Projects\Falcon Falls East 2nd_23-02-P866\Engineering\Phase 1\SS_23-10-E627\SS Plans Rev.dwg

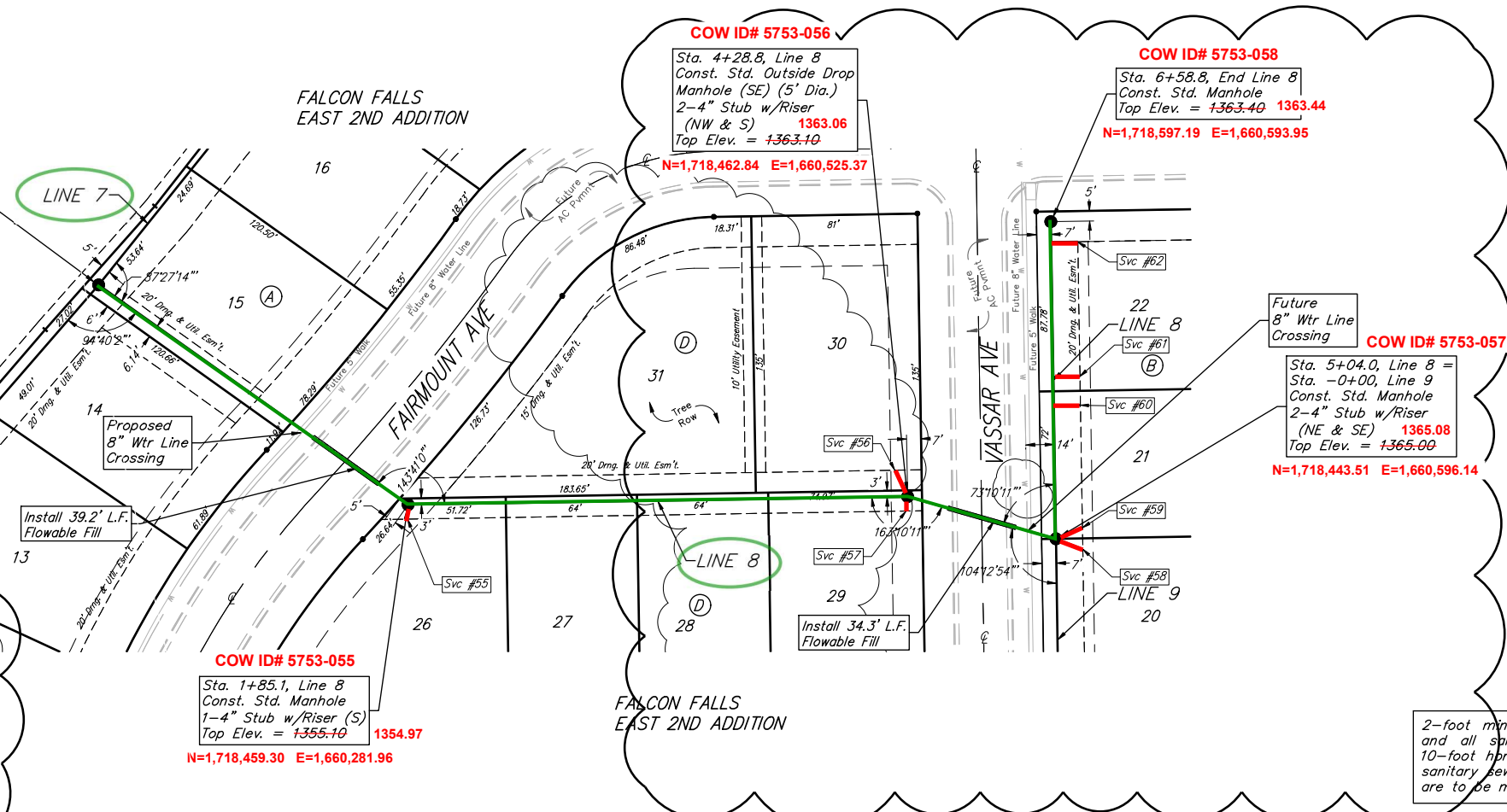
BENCHMARKS:
 Square cut in the center of headwall, southerly RCB, ±82' north of the northeast corner of Lot 30, Block C, Falcon Falls 3rd/ Addition. Elev.=1344.07 NAVD 88
 Square cut in top of curb, center of east curb return of center island, Blackhawk St, 53' west of centerline intersection of Hillside Ave. and Blackhawk St. Elev.=1354.01 NAVD 88
 Square cut with cross, in hub guard, east side of Hillside Avenue, 110 feet south of and 27 west of the southwest corner of the northwest quarter, Section 23, Township 26 South, Range 1 East. Elev.=1355.29 NAVD 88

Riser No.	Distance from Main to Riser	Lot No.	Block No.	Distance from	
				USMH	DSMH
55	8' Rt.	26	D	3'	stub
56	14' Lt.	30	D	9'	stub
57	8' Rt.	29	D	2'	stub
58	15' Rt.	20	B	6'	stub
59	14' Rt.	21	B	6'	stub
60	15' Rt.	21	B	90'	64'
61	15' Rt.	22	B	77'	77'
62	14' Rt.	22	B	11'	143'

COW ID# 5753-045
 Sta. 0+00.0, Begin Line 8 =
 Sta. 5+47.7, Line 7
 Top Elev. = 1354.46
 N=1,718,567.82 E=1,660,131.22

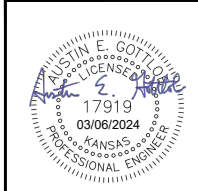
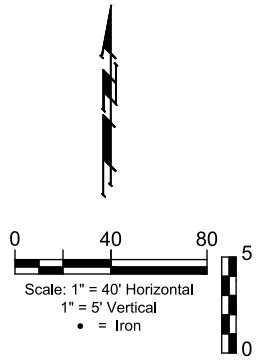
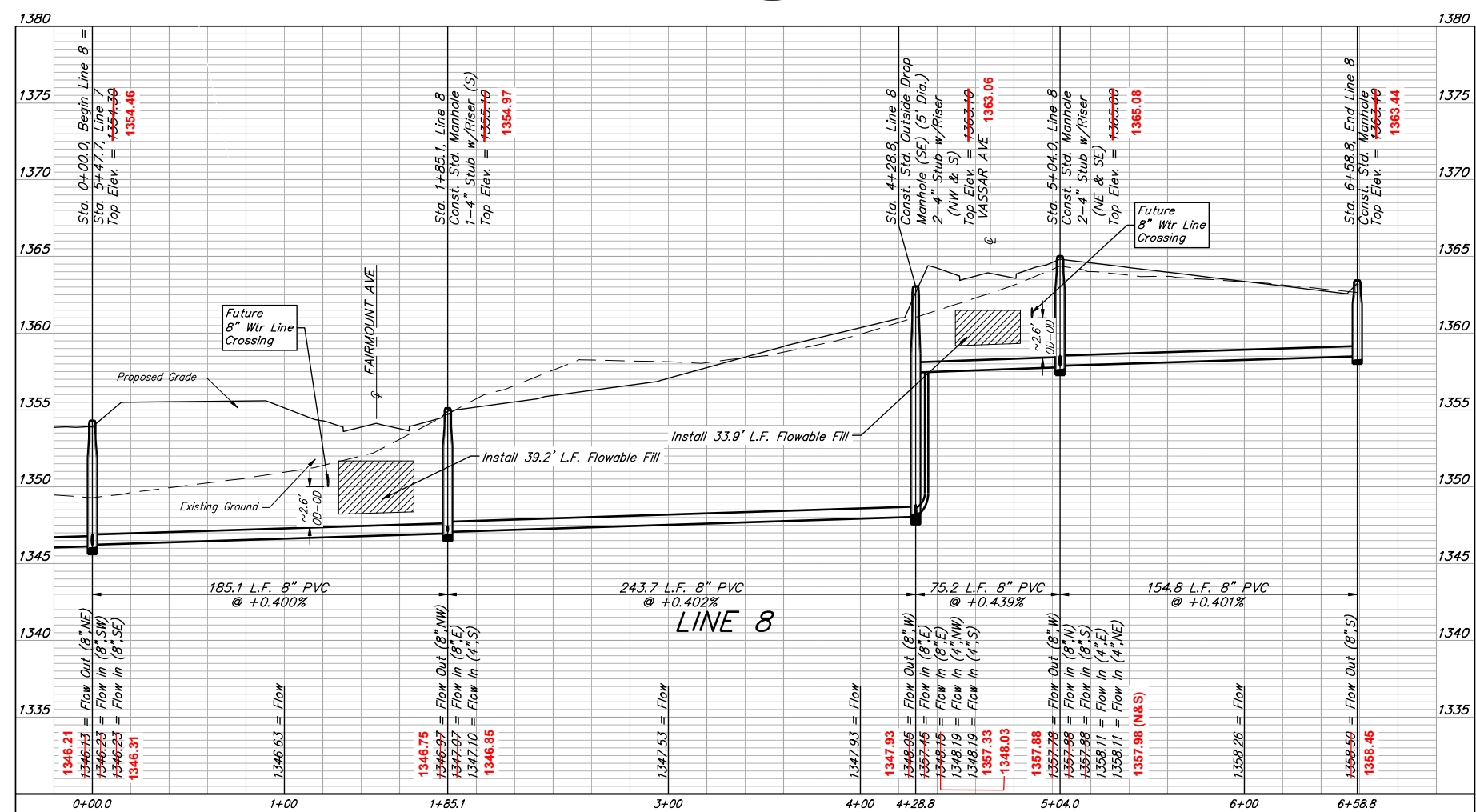
NUMBER	TYPE	LOCATION				FOR INFORMATION ONLY	
		LOT NO.	BLOCK NO.	LINE NO.	STATION/DIRECTION	APPROXIMATE LENGTH 4" PIPE	VERTICAL
55	4" Stub	26	D	8	1+85.10/Rt.	3.8	7.0
56	4" Stub	30	D	8	4+28.80/Lt.	8.9	14.3
57	4" Stub	29	D	8	4+28.80/Rt.	10.2	7.0
58	4" Stub	20	B	8	5+04.00/Rt.	3.4	14.0
59	4" Stub	21	B	8	5+04.00/Rt.	3.2	14.0
60	8" X 4" Tee	21	B	8	5+69.00/Rt.	1.1	13.0
61	8" X 4" Tee	22	B	8	5+83.00/Rt.	0.8	13.0
62	8" X 4" Tee	22	B	8	6+48.80/Rt.	0.1	13.0

SRV 55: N=1,718,451.07 E=1,660,279.03
 SRV 56: N=1,718,477.05 E=1,660,516.09
 SRV 57: N=1,718,455.05 E=1,660,524.75
 SRV 58: N=1,718,449.59 E=1,660,610.78
 SRV 59: N=1,718,437.98 E=1,660,610.53
 SRV 60: N=1,718,507.55 E=1,660,610.50
 SRV 61: N=1,718,520.63 E=1,660,610.00
 SRV 62: N=1,718,586.45 E=1,660,607.95



All trench and manhole excavation areas from Sta. 5+04.0 to Sta. 6+58.8, Line 8 shall be backfilled with sand. The sand backfill shall be water-jetted and vibrated during backfilling. All costs shall be paid for as L.F. "Fill, Sand (Flushed & Vibrated)".

2-foot minimum vertical separation between water service lines and all sanitary sewer lines shall be maintained at crossings. 10-foot horizontal separation between water service lines and all sanitary sewer lines and manholes shall be maintained. Distances are to be measured from edge-to-edge, at the closest point.



BAUGHMAN COMPANY
 315 Ellis St.
 Wichita, KS 67211
 316-262-7271
 BaughmanCo.com

FALCON FALLS EAST 2ND ADDITION
LINE 8
 SANITARY SEWER IMPROVEMENTS
 PROJECT NUMBER:
 DESIGN: AEG DRAWN: AJV
 DATE: March 6, 2024
 SHEET **13** OF **28**

REVISION: Adjunct Service Location for Re-Pipe
 Date: 3/6/2024
 By: AJV

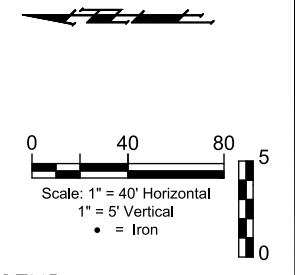
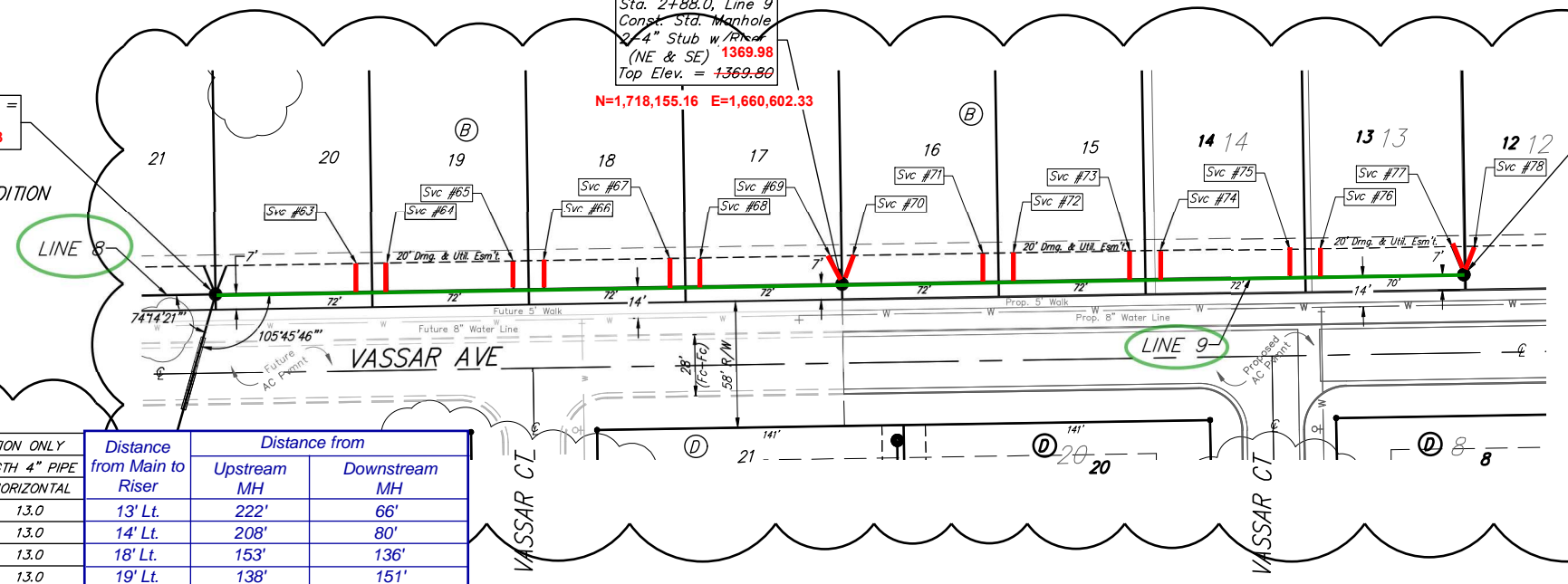
File: E:\Projects\Falcon Falls East 2nd 23-02-P866(Engineering)\Phase 1\SS_23-10-EG27\SS Plans Rev.dwg

BENCHMARKS:
 Square cut in the center of headwall, southerly RCBC, ±82' north of the northeast corner of Lot 30, Block C, Falcon Falls 3rd/ Addition. Elev.=1344.07 NAVD 88
 Square cut in top of curb, center of east curb return of center island, Blackhawk St., 53' west of centerline intersection of Hillside Ave. and Blackhawk St. Elev.=1354.01 NAVD 88
 Square cut with cross, in hub guard, east side of Hillside Avenue, 110 feet south of and 27 west of the southwest corner of the northwest quarter, Section 23, Township 26 South, Range 1 East. Elev.=1355.29 NAVD 88

COW ID# 5753-057
 Sta. -0+00.0, Begin Line 9 = Sta. 5+04, Line 8
 Top Elev. = 1365.00 1365.08
 N=1,718,443.51 E=1,660,596.14

COW ID# 5753-059
 Sta. 2+88.0, Line 9 Const. Sta. Manhole 2-4" Stub w/Riser (NE & SE) 1369.98
 Top Elev. = 1369.80
 N=1,718,155.16 E=1,660,602.33

COW ID# 5753-060
 Sta. 5+74.0, End Line 9 Const. Sta. Manhole 2-4" Stub w/Riser (NE & SE) 1369.64
 Top Elev. = 1369.60
 N=1,717,868.89 E=1,660,606.91

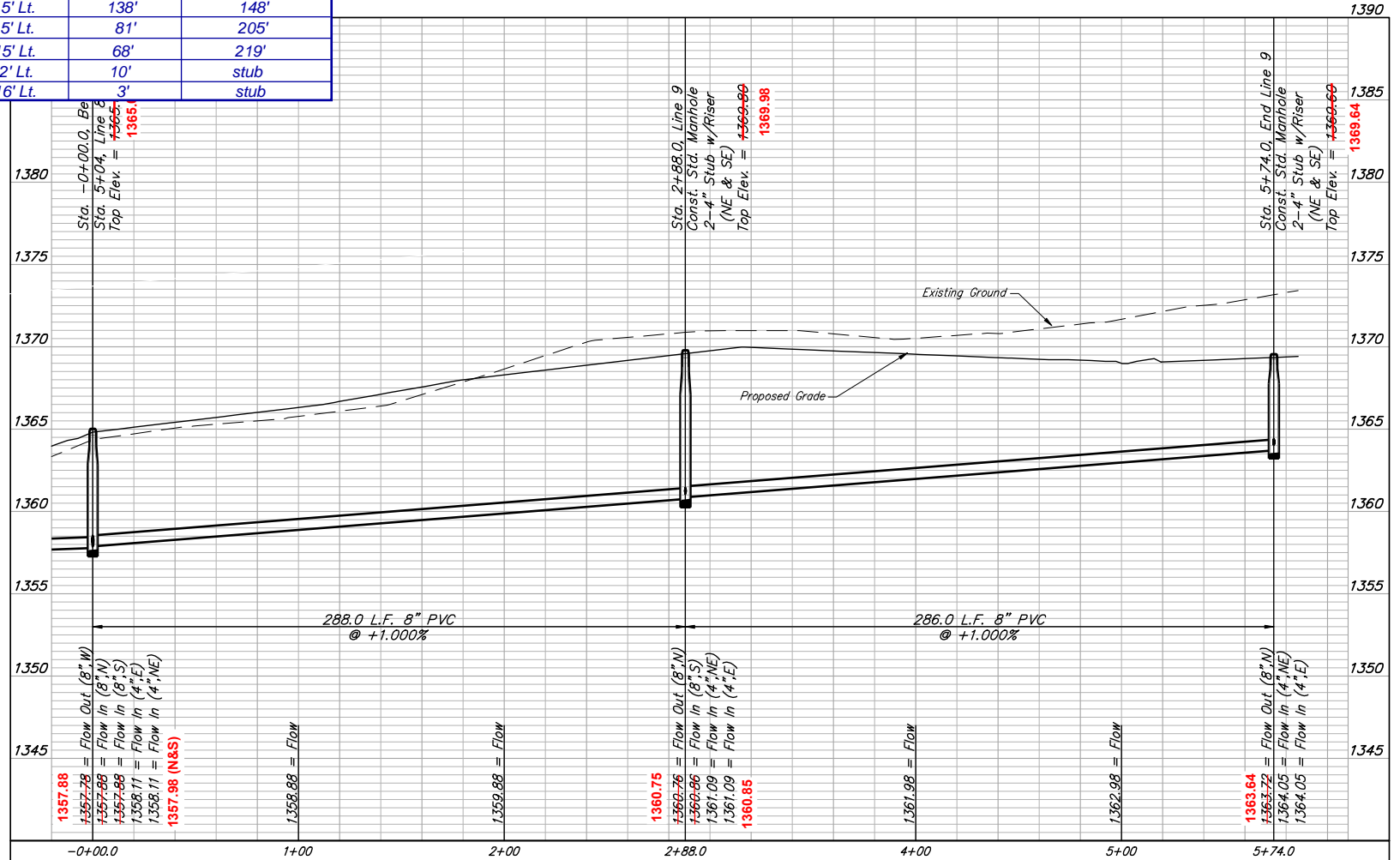


LEGEND

EX. Falcon Falls East 2nd Plat	Lot Line	_____
	Lot #	13
PRO. Falcon Falls East 3rd Plat	Lot Line	_____
	Lot #	13

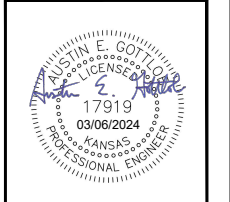
NUMBER	TYPE	LOCATION				FOR INFORMATION ONLY		Distance from Main to Riser	Distance from	
		LOT NO.	BLOCK NO.	LINE NO.	STATION/DIRECTION	APPROXIMATE LENGTH 4" PIPE VERTICAL	HORIZONTAL		Upstream MH	Downstream MH
63	8" X 4" Tee	20	B	9	0+65.00/Lt.	2.7	13.0	13' Lt.	222'	66'
64	8" X 4" Tee	19	B	9	0+79.00/Lt.	2.7	13.0	14' Lt.	208'	80'
65	8" X 4" Tee	19	B	9	1+37.00/Lt.	3.2	13.0	18' Lt.	153'	136'
66	8" X 4" Tee	18	B	9	1+51.00/Lt.	3.3	13.0	19' Lt.	138'	151'
67	8" X 4" Tee	18	B	9	2+09.00/Lt.	3.8	13.0	14' Lt.	83'	206'
68	8" X 4" Tee	17	B	9	2+23.00/Lt.	3.9	13.0	15' Lt.	66'	222'
69	4" Stub	17	B	9	2+88.00/Lt.	5.0	14.0	15' Lt.	6'	stub
70	4" Stub	16	B	9	2+88.00/Lt.	5.1	14.0	14' Lt.	6'	stub
71	8" X 4" Tee	16	B	9	3+53.00/Lt.	3.7	13.0	15' Lt.	220'	66'
72	8" X 4" Tee	15	B	9	3+67.00/Lt.	3.5	13.0	15' Lt.	207'	79'
73	8" X 4" Tee	15	B	9	4+20.50/Lt.	2.6	13.0	15' Lt.	156'	131'
74	8" X 4" Tee	14	B	9	4+34.50/Lt.	2.4	13.0	15' Lt.	138'	148'
75	8" X 4" Tee	14	B	9	4+94.10/Lt.	1.7	13.0	15' Lt.	81'	205'
76	8" X 4" Tee	13	B	9	5+08.10/Lt.	1.5	13.0	15' Lt.	68'	219'
77	4" Stub	13	B	9	5+74.00/Lt.	1.3	14.0	12' Lt.	10'	stub
78	4" Stub	12	B	9	5+74.00/Lt.	1.4	14.0	16' Lt.	3'	stub

- SRV 63: N=1,718,377.72 E=1,660,610.42
- SRV 64: N=1,718,363.63 E=1,660,612.07
- SRV 65: N=1,718,308.46 E=1,660,616.65
- SRV 66: N=1,718,292.98 E=1,660,618.26
- SRV 67: N=1,718,237.90 E=1,660,614.84
- SRV 68: N=1,718,221.85 E=1,660,615.61
- SRV 69: N=1,718,161.51 E=1,660,616.68
- SRV 70: N=1,718,149.84 E=1,660,616.50
- SRV 71: N=1,718,089.92 E=1,660,618.20
- SRV 72: N=1,718,076.17 E=1,660,618.20
- SRV 73: N=1,718,024.62 E=1,660,619.64
- SRV 74: N=1,718,007.43 E=1,660,620.04
- SRV 75: N=1,717,950.10 E=1,660,620.13
- SRV 76: N=1,717,936.61 E=1,660,620.57
- SRV 77: N=1,717,878.84 E=1,660,618.24
- SRV 78: N=1,717,866.47 E=1,660,622.92



All trench and manhole excavation areas from Sta. 0+00.00 to Sta. 5+74.0, Line 9 shall be backfilled with sand. The sand backfill shall be water-jetted and vibrated during backfilling. All costs shall be paid for as L.F. "Fill, Sand (Flushed & Vibrated)".

2-foot minimum vertical separation between water service lines and all sanitary sewer lines shall be maintained at crossings. 10-foot horizontal separation between water service lines and all sanitary sewer lines and manholes shall be maintained. Distances are to be measured from edge-to-edge, at the closest point.



BAUGHMAN COMPANY
 315 Ellis St.
 Wichita, KS 67211
 316-262-7271
 BaughmanCo.com

FALCON FALLS EAST 2ND ADDITION
LINE 9
 SANITARY SEWER IMPROVEMENTS
 PROJECT NUMBER:
 DESIGN: AEG DRAWN: AJV
 DATE: March 6, 2024
 SHEET **14** OF **28**

REVISION: Allowed Service Location for Re-Plur
 Date: 1/6/2024
 By: AJV

File: E:\Projects\Falcon Falls East 2nd 23-02-P866(Engineering)\Phase 1\SS_23-10-EG27\SS Plans Rev.dwg

BENCHMARKS:
 Square cut in the center of headwall, southerly RCB, ±82' north of the northeast corner of Lot 30, Block C, Falcon Falls 3rd/ Addition. Elev.=1344.07 NAVD 88

Square cut in top of curb, center of east curb return of center island, Blackhawk St., 53' west of centerline intersection of Hillside Ave. and Blackhawk St. Elev.=1354.01 NAVD 88

Square cut with cross, in hub guard, east side of Hillside Avenue, 110 feet south of and 27 west of the southwest corner of the northwest quarter, Section 23, Township 26 South, Range 1 East. Elev.=1355.20 NAVD 88

COW ID# 5753-048
 Sta. 0+00.0, Begin Line 10 = Sta. 0+44.9, Line 7
 Top Elev. = ~~+1355.20~~ 1355.50
 N=1,718,985.50 E=1,660,403.59

COW ID# 5753-049
 Sta. 3+07.5, Line 10 Const. Std. Manhole
 Top Elev. = ~~+1353.10~~ 1353.35
 N=1,719,277.43 E=1,660,499.71

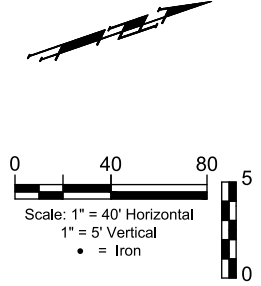
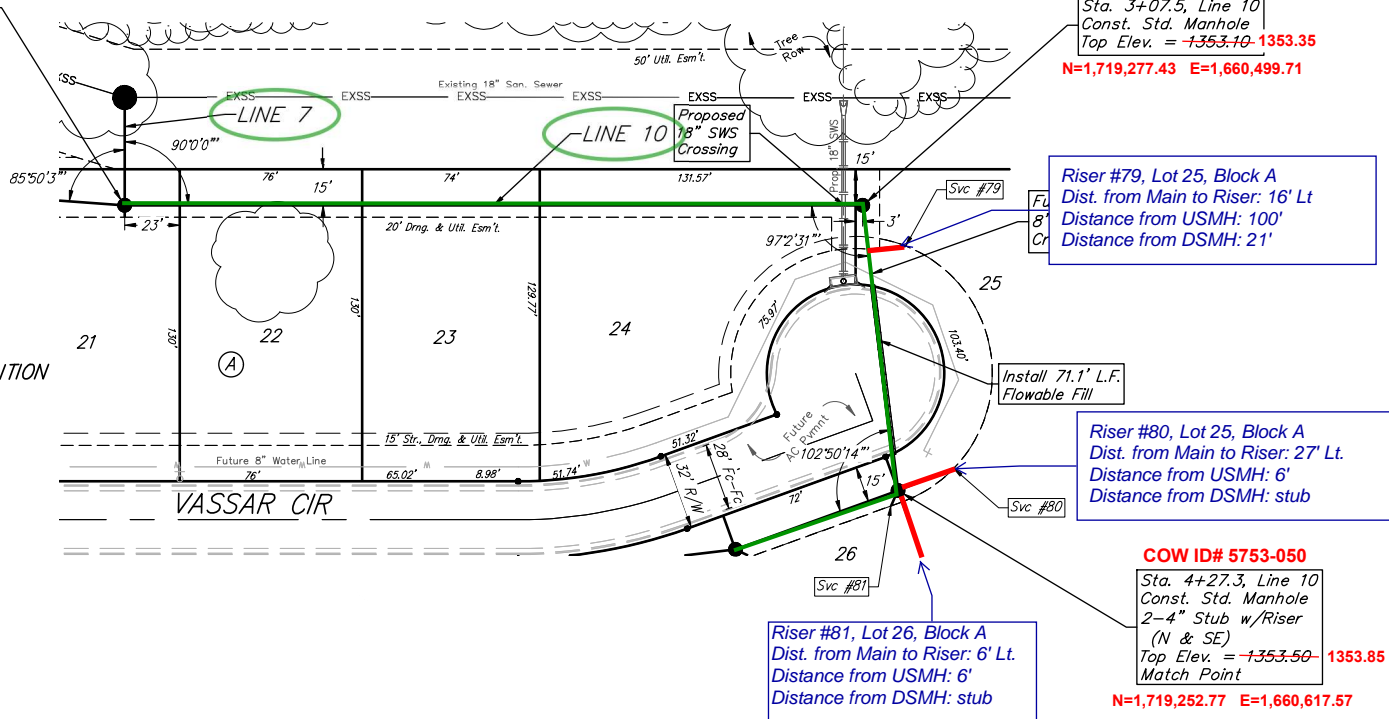
Riser #79, Lot 25, Block A
 Dist. from Main to Riser: 16' Lt
 Distance from USMH: 100'
 Distance from DSMH: 21'

Riser #80, Lot 25, Block A
 Dist. from Main to Riser: 27' Lt.
 Distance from USMH: 6'
 Distance from DSMH: stub

COW ID# 5753-050
 Sta. 4+27.3, Line 10 Const. Std. Manhole 2-4" Stub w/Riser (N & SE)
 Top Elev. = ~~+1353.50~~ 1353.85
 Match Point
 N=1,719,252.77 E=1,660,617.57

Riser #81, Lot 26, Block A
 Dist. from Main to Riser: 6' Lt.
 Distance from USMH: 6'
 Distance from DSMH: stub

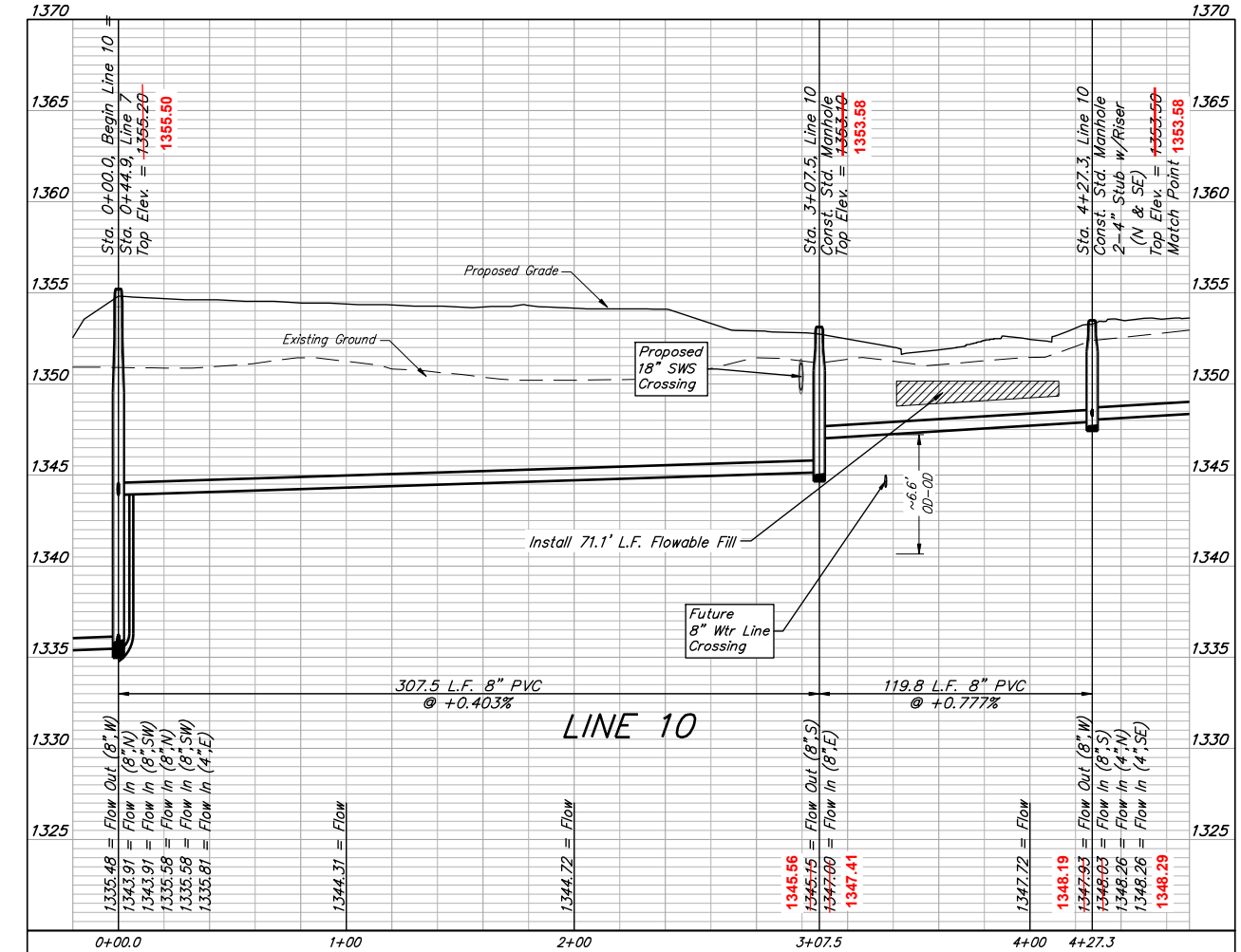
FALCON FALLS EAST 2ND ADDITION



NUMBER	TYPE	LOCATION				FOR INFORMATION ONLY	
		LOT NO.	BLOCK NO.	LINE NO.	STATION/DIRECTION	APPROXIMATE LENGTH 4" PIPE	
79	8" X 4" Tee	25	A	10	3+26.50/Lt.	-	15.7
80	4" Stub	25	A	10	4+27.30/Lt.	-	25.0
81	4" Stub	26	A	10	4+27.30/Lt.	1.1	7.0

SRV 79: N=1,719,288.79 E=1,660,523.45
 SRV 80: N=1,719,280.23 E=1,660,616.96
 SRV 81: N=1,719,246.79 E=1,660,624.02

2-foot minimum vertical separation between water service lines and all sanitary sewer lines shall be maintained at crossings. 10-foot horizontal separation between water service lines and all sanitary sewer lines and manholes shall be maintained. Distances are to be measured from edge-to-edge, at the closest point.



BAUGHMAN COMPANY
 315 Ellis St.
 Wichita, KS 67211
 316-262-7271
 BaughmanCo.com

FALCON FALLS EAST 2ND ADDITION

LINE 10

SANITARY SEWER IMPROVEMENTS

PROJECT NUMBER:

DESIGN: AEG DRAWN: AJV
 DATE: March 6, 2024

SHEET **15** OF **28**

File: E:\Projects\Falcon Falls East 2nd 23-02-P866\Engineering\Phase 1\SS_23-10-EG27\SS Plans Rev.dwg

BENCHMARKS:
 Square cut in the center of headwall, southerly RCB, ±82' north of the northeast corner of Lot 30, Block C, Falcon Falls 3rd/ Addition. Elev.=1344.07 NAVD 88
 Square cut in top of curb, center of east curb return of center island, Blackhawk St., 53' west of centerline intersection of Hillside Ave. and Blackhawk St. Elev.=1354.01 NAVD 88
 Square cut with cross, in hub guard, east side of Hillside Avenue, 110 feet south of and 27 west of the southwest corner of the northwest quarter, Section 23, Township 26 South, Range 1 East. Elev.=1355.29 NAVD 88

COW ID# 5753-051
 Sta. 4+99.3, Line 10
 Const. Std. Manhole
 2-4" Stub w/Riser
 (NE & SE) **1355.63**
 Top Elev. = **1355.40**
 N=1,719,180.85 E=1,660,619.04

COW ID# 5753-052
 Sta. 6+55.1, Line 10
 Const. Std. Manhole
 2-4" Stub w/Riser
 (NE & SE) **1355.63**
 Top Elev. = **1355.40**
 N=1,719,026.80 E=1,660,586.17

COW ID# 5753-054
 Sta. 11+25.7, End Line 10
 Const. Std. Manhole
 Top Elev. = **1362.40 1362.63**
 N=1,718,803.47 E=1,660,715.48

COW ID# 5753-050
 Sta. 4+27.3, Line 10
 Top Elev. = **1353.50**
 Match Point **1353.85**
 N=1,719,252.77 E=1,660,617.57

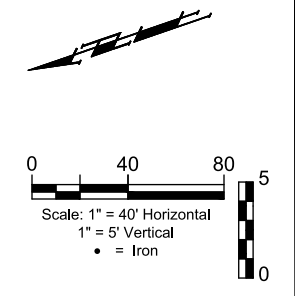
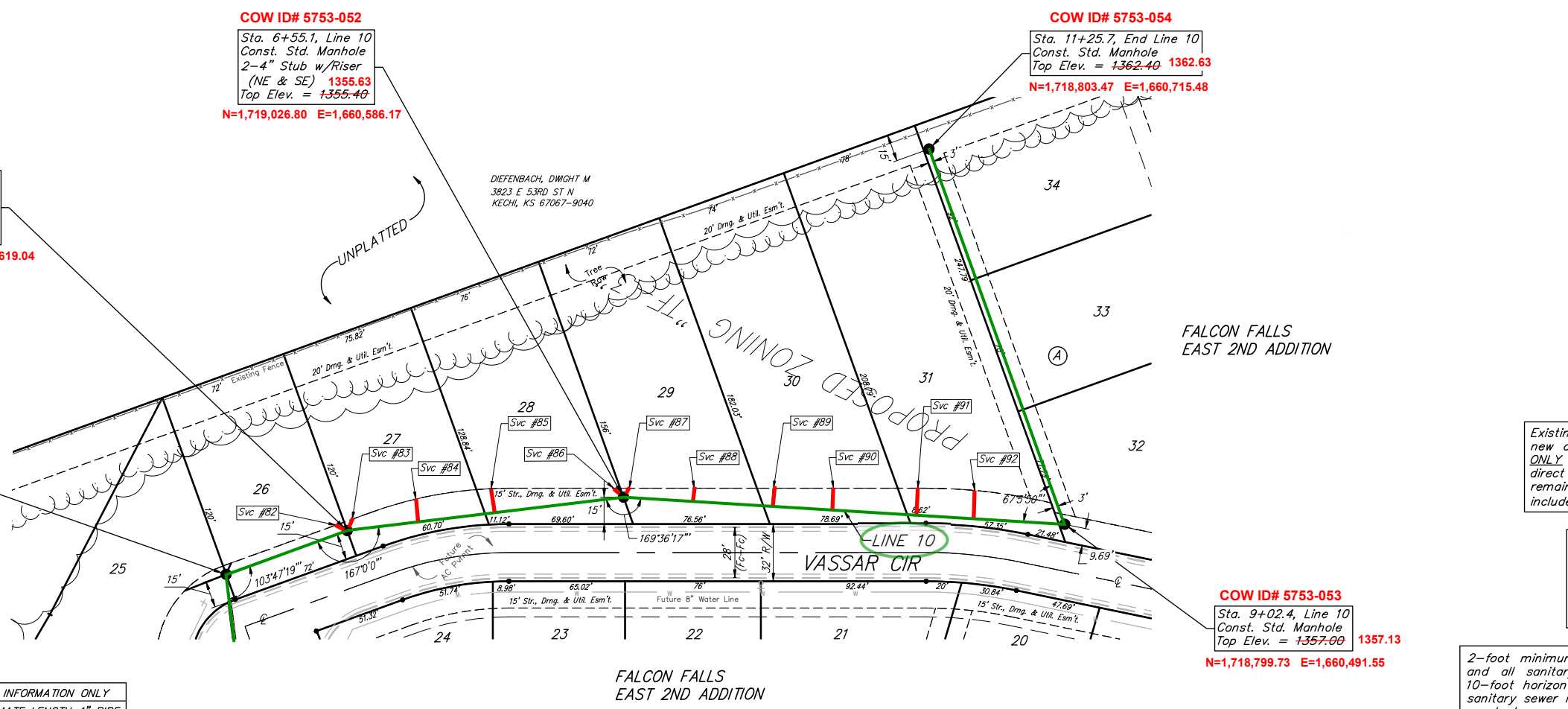
COW ID# 5753-053
 Sta. 9+02.4, Line 10
 Const. Std. Manhole
 Top Elev. = **1357.00 1357.13**
 N=1,718,799.73 E=1,660,491.55

Riser No.	Distance from Main to Riser	Lot No.	Block No.	Distance from	
				USMH	DSMH
82	6' Lt.	26	A	7'	stub
83	8' Lt.	27	A	5'	stub
84	15' Lt.	27	A	118'	40'
85	15' Lt.	28	A	76'	82'
86	7' Lt.	28	A	7'	stub

Riser No.	Distance from Main to Riser	Lot No.	Block No.	Distance from	
				USMH	DSMH
87	7' Lt.	29	A	3'	stub
88	10' Lt.	29	A	207'	39'
89	12' Lt.	30	A	164'	82'
90	14' Lt.	30	A	132'	114'
91	17' Lt.	31	A	84'	163'
92	19' Lt.	31	A	52'	194'

NUMBER	TYPE	LOCATION					FOR INFORMATION ONLY	
		LOT NO.	BLOCK NO.	LINE NO.	STATION/DIRECTION	APPROXIMATE LENGTH 4" PIPE		
						VERTICAL	HORIZONTAL	
82	4" Stub	26	A	10	4+99.30/Lt.	1.3	7.0	
83	4" Stub	27	A	10	4+99.30/Lt.	1.3	7.0	
84	8" X 4" Tee	27	A	10	5+39.60/Lt.	0.4	12.9	
85	8" X 4" Tee	28	A	10	5+82.10/Lt.	0.3	13.6	
86	4" Stub	28	A	10	6+55.10/Lt.	1.0	7.5	
87	4" Stub	29	A	10	6+55.10/Lt.	1.0	6.0	
88	8" X 4" Tee	29	A	10	6+94.30/Lt.	0.3	7.4	
89	8" X 4" Tee	30	A	10	7+38.60/Lt.	0.1	10.1	
90	8" X 4" Tee	30	A	10	7+72.10/Lt.	0.1	12.2	
91	8" X 4" Tee	31	A	10	8+19.20/Lt.	-	15.1	
92	8" X 4" Tee	31	A	10	8+51.10/Lt.	-	15.8	

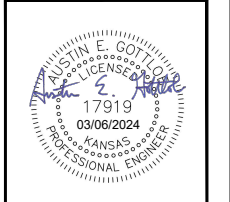
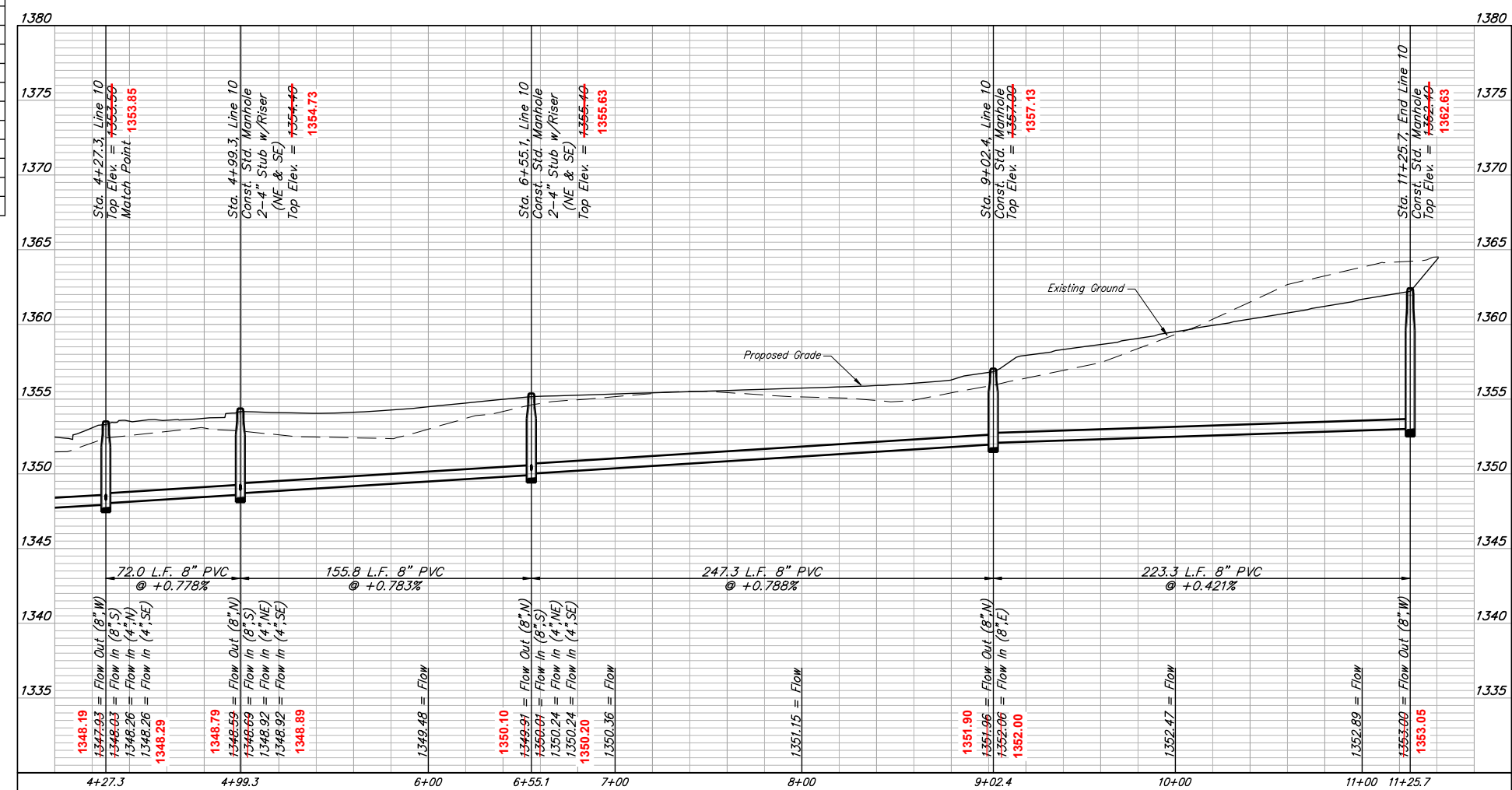
- SRV 82: N=1,719,188.29 E=1,660,624.81
- SRV 83: N=1,719,174.80 E=1,660,625.46
- SRV 84: N=1,719,138.83 E=1,660,625.03
- SRV 85: N=1,719,097.86 E=1,660,616.29
- SRV 86: N=1,719,032.10 E=1,660,594.75
- SRV 87: N=1,719,021.22 E=1,660,590.95
- SRV 88: N=1,718,987.17 E=1,660,579.90
- SRV 89: N=1,718,946.66 E=1,660,565.73
- SRV 90: N=1,718,916.32 E=1,660,555.58
- SRV 91: N=1,718,870.06 E=1,660,539.26
- SRV 92: N=1,718,840.84 E=1,660,529.20



Existing trees which are in direct conflict with proposed new construction shall be removed by the Contractor ONLY with approval of the Engineer. Trees not in direct conflict with proposed new construction shall remain and be protected from damage. Cost shall be included in bid item "Site Clearing."

All trench and manhole excavation areas from Sta. 4+27.3 to Sta. 9+02.4, Line 10 shall be backfilled with sand. The sand backfill shall be water-jetted and vibrated during backfilling. All costs shall be paid for as L.F. "Fill, Sand (Flushed & Vibrated)".

2-foot minimum vertical separation between water service lines and all sanitary sewer lines shall be maintained at crossings. 10-foot horizontal separation between water service lines and all sanitary sewer lines and manholes shall be maintained. Distances are to be measured from edge-to-edge, at the closest point.



BAUGHMAN COMPANY
 315 Ellis St.
 Wichita, KS 67211
 316-262-7271
 BaughmanCo.com

FALCON FALLS EAST 2ND ADDITION
LINE 10
 SANITARY SEWER IMPROVEMENTS
 PROJECT NUMBER:
 DESIGN: AEG DRAWN: AJV
 DATE: March 6, 2024
 SHEET **16** OF **28**

File: E:\Projects\Falcon Falls East 2nd 23-02-P866\Engineering\Phase 1\SS_23-10-E627\SS Plans Rev.dwg