

Storm Sewer Plans to Serve
REI WICHITA
******* NORTH GREENWICH PLACE**
an Addition to Wichita, Sedgwick County, Kansas
Gary Janzen, P.E., City Engineer
589 PPD (133119)

INDEX OF SHEETS

| | |
|----|--------------------------------|
| 01 | Title Sheet |
| 02 | Final Plat |
| 03 | General Notes & Quantities |
| 04 | General Layout |
| 05 | Drainage Area Map |
| 06 | Plan and Profile Line A |
| 07 | Erosion Control Plan Phase I |
| 08 | Erosion Control Plan Phase II |
| 09 | Erosion Control Plan Phase III |
| 10 | Standard Details |
| 11 | Standard Details |
| 12 | Standard Details |
| 13 | Standard Details |
| 14 | Standard Details |
| 15 | Standard Details |

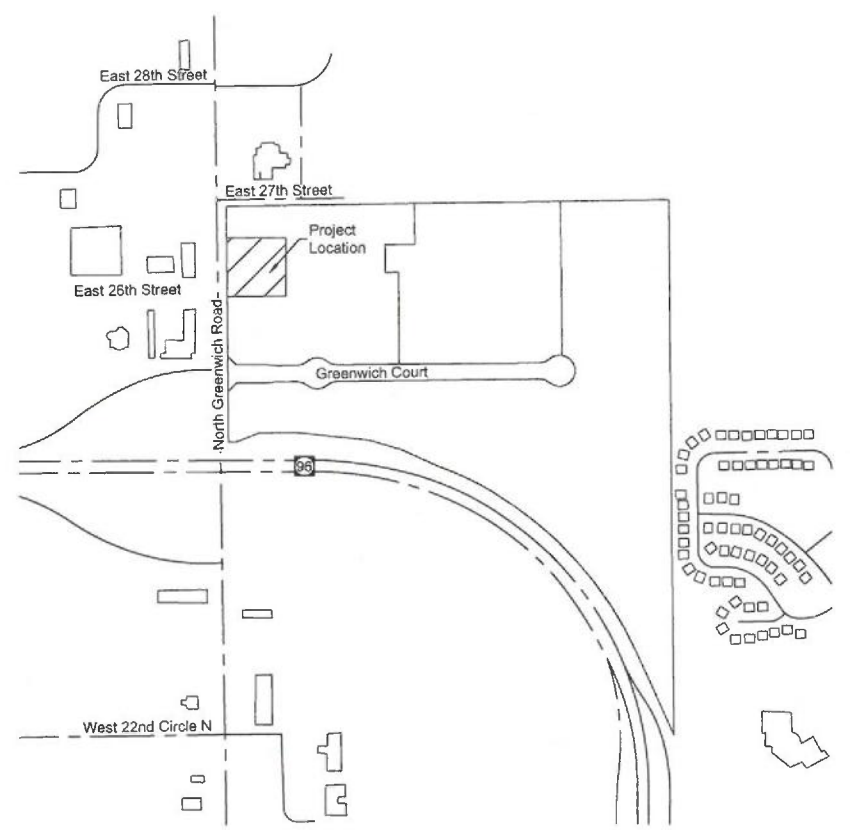
PROJECT BENCHMARK

Chiseled square cut, center front face of inlet East side of Greenwich Road,
342 feet +/- South of the intersection of East 27th Street and Greenwich Road
Project Elevation = 1377.42
KDOT Elevation = 1378.05
(Project Elevation is -0.63 feet from KDOT)

BENCHMARKS:

- TBM 1:
Chiseled Square cut on E. Curb of island in center of Greenwich Road.
Approximately 60' S. of intersection of westbound ramp to K-96.
RIC Project Datum Elev. = 1373.08
- TBM 2:
Chiseled Square cut on south curb of 27th Street approximately 690 feet east
of intersection of Greenwich Road.
RIC Project Datum Elev. = 1378.40
- TBM 3:
Chiseled Square cut on south side of 27th Street approximately 330 feet east
of intersection of Greenwich Road.
RIC Project Datum Elev. = 1378.36

All elevations shown are Project Datum (Project Datum = NAVD 88 - 0.63')



LOCATION MAP
Scale: 1" = 500'

UTILITY SERVICE & INSTALLATION CONTACTS

- | | |
|---|---|
| KANSAS GAS SERVICE Attn: Tim Hamlin (316) 832-3121 | WICHITA WATER Attn: Greg Lolley (316) 268-4334 |
| WESTAR ENERGY Attn: Becky Thompson (316) 261-6320 | AT&T Attn: Jason Edwards (316) 268-2008 |
| BLACK HILLS ENERGY Attn: Daryl Keller (316) 941-1654 | COX COMMUNICATIONS Attn: Mark Henderson (316) 260-7745 |
| NUSTAR ENERGY L.P. Attn: Renee Davis (316) 721-7059 | WICHITA SEWER Attn: LaDonna (316) 268-4329 |

UTILITY EMERGENCY CONTACTS

- | | |
|---|---|
| KANSAS ONE-CALL (316) 687-2470 | AT&T 1-555-1212 |
| COX COMMUNICATIONS (316) 687-2470 | CITY OF WICHITA WATER DEPT (316) 268-4908 |
| WESTAR ENERGY/ KANSAS GAS & ELECTRIC COMPANY (800) 482-4950 | CITY OF WICHITA SEWER DEPT (316) 268-4071 |

KANSAS ONE-CALL:
1-800-DIG-SAFE
(1-800-344-7233)



Protect yourselves and your property against underground utility damage and liability.
Find out where the underground utility lines might be buried before you dig.
Anyone digging in Kansas must call before digging. The person who is doing the work is responsible for calling KOC. If the owner contracts with a professional excavator to do the excavation then the professional excavator is responsible for calling KOC.
You (the digger) will need to provide information about the work site when you call. This is a FREE service.
CALL BEFORE YOU DIG
IT'S THE LAW

LEGEND

| | |
|--------------------------------|------------------------------|
| — Existing Section Line | — Proposed Right-of-Way |
| --- Existing Right-of-Way Line | — Proposed Property Line |
| — Existing Lot Line | — Proposed Lot Line |
| --- Existing Easement Line | --- Proposed Easement |
| — Existing Curb & Gutter | — Proposed Curb & Gutter |
| — Existing Sidewalk | — Proposed Sidewalk |
| — Existing Storm Sewer | — Proposed Storm Sewer |
| □ Existing Storm Structure | □ Proposed Storm Structure |
| — Existing Watertline | ▲ Proposed Fire Hydrant |
| — Existing Gas Main | — Proposed Watertline |
| — Existing Sanitary Sewer | — Proposed Sanitary Sewer |
| ● Existing Sanitary Manhole | ● Proposed Sanitary Manhole |
| --- Existing Contour Major | — Proposed Contour Major |
| --- Existing Contour Minor | — Proposed Contour Minor |
| | ----- Future Curb and Gutter |

AS BUILTS

Contractor: Sooter Excavation
Inspector: Matt Perez
Date: 12-24-2019

KEMILLER ENGINEERING PA
117 E. Lewis,
Wichita, KS 67202 (316)264-0242

Stormwater Certification
New Development
Stormwater Permit #: SW2019-0062
NOI Permit #: S-AR94-1561 KGR114755

These construction plans were prepared in accordance with the current Stormwater Management Regulations as set forth in the City of Wichita's Stormwater Management Ordinance 16.32 and the policies/guidelines presented in the Wichita/Sedgwick County Stormwater Manual.

Site Area: 3.85 Acres
Disturbed Area: 3.85 Acres
Water Quality Treatment: Detention Pond and Oil-Debris Hood for Sediment and Trash Removal.
Downstream Channel Protection: Detention Pond
Detention: Regional Pond
BMP: Wet pond previously constructed as part of master development

APPROVED AS NOTED
BY WICHITA PUBLIC WORKS ENGINEER
AND STORMWATER DIVISION

Engineering: *Keith Goleben* 11.12.19
Stormwater: *Joe Hinkle* 11.12.19

NOTE TO CONTRACTORS

Inspection and testing for this project is to be provided by a Licensed Consulting Engineering Firm under contract with the Owner / Developer. Said inspection to be in accordance with the City of Wichita standard construction engineering practices and certified by a Licensed Professional Engineer in the State of Kansas. No work shall be performed in dedicated easements or public right-of-way by the Contractor without such inspection nor shall any work be commenced without written authorization by the City Engineer. All Construction and Materials shall comply with the City of Wichita Specifications and Standards and Special Provisions. (on file and available at Wichita.gov).

An Approved copy of these plans signed by City staff are required on-site.

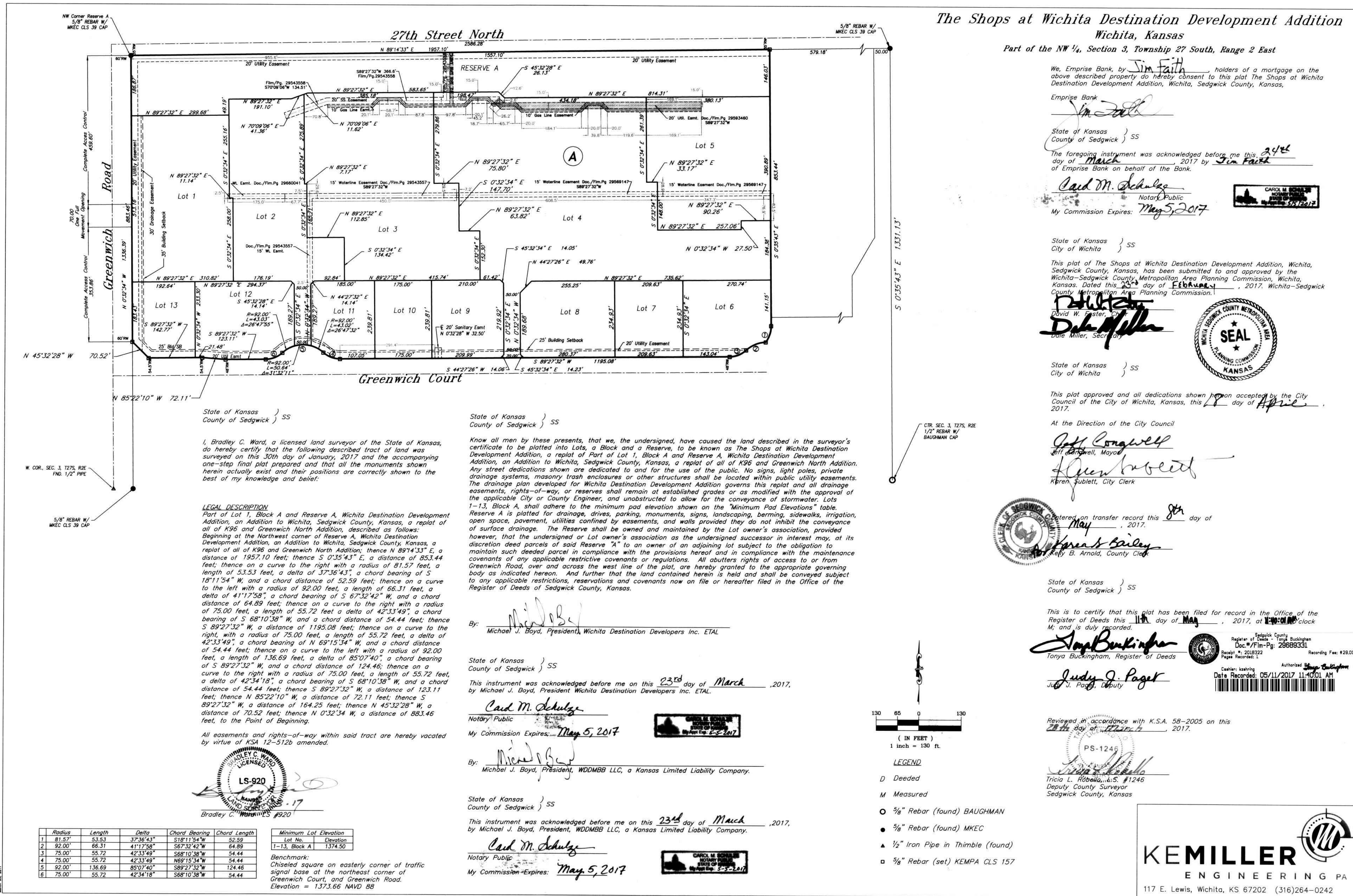
Private Project Drainage Plans
18-0266
REI Wichita Greenwich
Place Shopping Center

Title Sheet

| NO. | BY | DATE | PER CITY COMMENTS |
|-----|----|----------|-----------------------------------|
| 01 | PC | 11/22/19 | UPDATED PER LATEST UTILITY LAYOUT |
| 02 | DB | 10/16/19 | PER CITY COMMENTS |
| 03 | DB | 7/11/19 | REVISION |
| 04 | PC | 08 | |
| 05 | BY | 05 | |
| 06 | DB | 05 | |

Renaissance Infrastructure Consulting
5015 NW CANAL STREET, SUITE 100
RIVERBEND, MISSOURI 64150
816.800.0950
WWW.RIC-CONSULT.COM

4-263 0d



The Shops at Wichita Destination Development Addition
Wichita, Kansas
Part of the NW 1/4, Section 3, Township 27 South, Range 2 East

We, Emprise Bank, by Jim Faith, holders of a mortgage on the above described property do hereby consent to this plat The Shops at Wichita Destination Development Addition, Wichita, Sedgwick County, Kansas,
day of March, 2017 by Jim Faith
of Emprise Bank on behalf of the Bank.

Emprise Bank
Jim Faith
State of Kansas } SS
County of Sedgwick }

The foregoing instrument was acknowledged before me this 24th day of March, 2017 by Jim Faith of Emprise Bank on behalf of the Bank.

Carol M. Schultz
Notary Public
My Commission Expires: May 5, 2017

State of Kansas } SS
City of Wichita }

This plat of The Shops at Wichita Destination Development Addition, Wichita, Sedgwick County, Kansas, has been submitted to and approved by the Wichita-Sedgwick County Metropolitan Area Planning Commission, Wichita, Kansas, dated this 25th day of February, 2017. Wichita-Sedgwick County Metropolitan Area Planning Commission.

David W. Miller
Notary Public
Date Miller, Secretary



State of Kansas } SS
City of Wichita }

This plat approved and all dedications shown hereon accepted by the City Council of the City of Wichita, Kansas, this 18th day of April, 2017.

At the Direction of the City Council
Jeff Conroy
Jeff Conroy, Mayor

Karen Sublett
Karen Sublett, City Clerk

Platted on transfer record this 8th day of May, 2017.
Karen B. Bailey
K. B. Bailey, County Clerk

State of Kansas } SS
County of Sedgwick }

This is to certify that this plat has been filed for record in the Office of the Register of Deeds this 11th day of May, 2017, at 10:00 o'clock AM, and is duly recorded.

Tanya Buckingham
Tanya Buckingham, Register of Deeds
Judy J. Page
Judy J. Page, Deputy



Reviewed in accordance with K.S.A. 58-2005 on this 28th day of April, 2017.

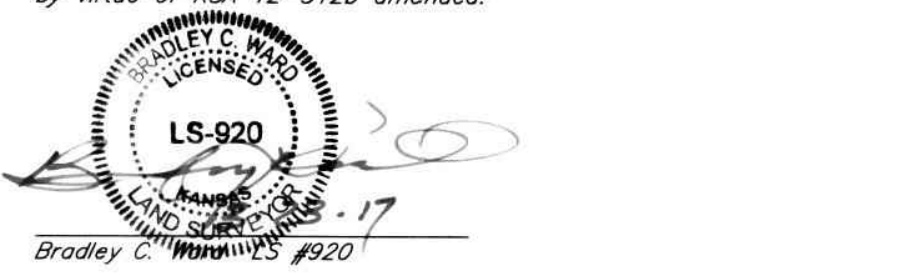
Tricia L. Rothwell
Tricia L. Rothwell, S. 1246
Deputy County Surveyor
Sedgwick County, Kansas

KEMILLER ENGINEERING PA
117 E. Lewis, Wichita, KS 67202 (316)264-0242

I, Bradley C. Ward, a licensed land surveyor of the State of Kansas, do hereby certify that the following described tract of land was surveyed on this 30th day of January, 2017 and the accompanying one-step final plat prepared and that all the monuments shown herein actually exist and their positions are correctly shown to the best of my knowledge and belief.

LEGAL DESCRIPTION
Part of Lot 1, Block A and Reserve A, Wichita Destination Development Addition, an Addition to Wichita, Sedgwick County, Kansas, a replat of all of K96 and Greenwich North Addition, described as follows:
Beginning at the Northwest corner of Reserve A, Wichita Destination Development Addition, an Addition to Wichita, Sedgwick County, Kansas, a replat of all of K96 and Greenwich North Addition; thence N 89°14'33" E, a distance of 1957.10 feet; thence S 0°32'34" E, a distance of 653.44 feet; thence on a curve to the right with a radius of 81.57 feet, a length of 53.53 feet, a delta of 37°36'43", a chord bearing of S 18°11'54" W, and a chord distance of 52.59 feet; thence on a curve to the left with a radius of 92.00 feet, a length of 65.31 feet, a delta of 41°17'58", a chord bearing of S 67°32'42" W, and a chord distance of 64.89 feet; thence on a curve to the right with a radius of 75.00 feet, a length of 55.72 feet, a delta of 42°33'49", a chord bearing of S 68°10'38" W, and a chord distance of 54.44 feet; thence S 89°27'32" W, a distance of 1195.08 feet; thence on a curve to the right, with a radius of 75.00 feet, a length of 55.72 feet, a delta of 42°33'49", a chord bearing of N 69°15'34" W, and a chord distance of 54.44 feet; thence on a curve to the left with a radius of 92.00 feet, a length of 136.69 feet, a delta of 85°07'40", a chord bearing of S 89°27'32" W, and a chord distance of 124.46 feet; thence on a curve to the right with a radius of 75.00 feet, a length of 55.72 feet, a delta of 42°34'18", a chord bearing of S 68°10'38" W, and a chord distance of 54.44 feet; thence S 89°27'32" W, a distance of 123.11 feet; thence N 85°22'10" W, a distance of 72.11 feet; thence S 89°27'32" W, a distance of 164.25 feet; thence N 45°32'28" W, a distance of 70.52 feet; thence N 0°32'34" W, a distance of 883.46 feet, to the Point of Beginning.

All easements and rights-of-way within said tract are hereby vacated by virtue of KSA 12-512b amended.



| Radius | Length | Delta | Chord Bearing | Chord Length |
|---------|--------|-----------|---------------|--------------|
| 1 81.57 | 53.53 | 37°36'43" | S 18°11'54" W | 52.59 |
| 2 92.00 | 65.31 | 41°17'58" | S 67°32'42" W | 64.89 |
| 3 75.00 | 55.72 | 42°33'49" | S 68°10'38" W | 54.44 |
| 4 75.00 | 55.72 | 42°33'49" | N 69°15'34" W | 54.44 |
| 5 92.00 | 136.69 | 85°07'40" | S 89°27'32" W | 124.46 |
| 6 75.00 | 55.72 | 42°34'18" | S 68°10'38" W | 54.44 |

Minimum Lot Elevation
Lot No. Elevation
1-13, Block A 1374.50

Benchmark:
Chiseled square on easterly corner of traffic signal base at the northeast corner of Greenwich Court, and Greenwich Road.
Elevation = 1373.66 NAVD 88

I, Michael J. Boyd, a licensed land surveyor of the State of Kansas, do hereby certify that the following described tract of land was surveyed on this 23rd day of March, 2017 and the accompanying one-step final plat prepared and that all the monuments shown herein actually exist and their positions are correctly shown to the best of my knowledge and belief.

LEGAL DESCRIPTION
Part of Lot 1, Block A and Reserve A, Wichita Destination Development Addition, an Addition to Wichita, Sedgwick County, Kansas, a replat of all of K96 and Greenwich North Addition, described as follows:
Beginning at the Northwest corner of Reserve A, Wichita Destination Development Addition, an Addition to Wichita, Sedgwick County, Kansas, a replat of all of K96 and Greenwich North Addition; thence N 89°14'33" E, a distance of 1957.10 feet; thence S 0°32'34" E, a distance of 653.44 feet; thence on a curve to the right with a radius of 81.57 feet, a length of 53.53 feet, a delta of 37°36'43", a chord bearing of S 18°11'54" W, and a chord distance of 52.59 feet; thence on a curve to the left with a radius of 92.00 feet, a length of 65.31 feet, a delta of 41°17'58", a chord bearing of S 67°32'42" W, and a chord distance of 64.89 feet; thence on a curve to the right with a radius of 75.00 feet, a length of 55.72 feet, a delta of 42°33'49", a chord bearing of S 68°10'38" W, and a chord distance of 54.44 feet; thence S 89°27'32" W, a distance of 1195.08 feet; thence on a curve to the right, with a radius of 75.00 feet, a length of 55.72 feet, a delta of 42°33'49", a chord bearing of N 69°15'34" W, and a chord distance of 54.44 feet; thence on a curve to the left with a radius of 92.00 feet, a length of 136.69 feet, a delta of 85°07'40", a chord bearing of S 89°27'32" W, and a chord distance of 124.46 feet; thence on a curve to the right with a radius of 75.00 feet, a length of 55.72 feet, a delta of 42°34'18", a chord bearing of S 68°10'38" W, and a chord distance of 54.44 feet; thence S 89°27'32" W, a distance of 123.11 feet; thence N 85°22'10" W, a distance of 72.11 feet; thence S 89°27'32" W, a distance of 164.25 feet; thence N 45°32'28" W, a distance of 70.52 feet; thence N 0°32'34" W, a distance of 883.46 feet, to the Point of Beginning.

All easements and rights-of-way within said tract are hereby vacated by virtue of KSA 12-512b amended.

By: Michael J. Boyd
Michael J. Boyd, President, Wichita Destination Developers Inc. ETAL

State of Kansas } SS
County of Sedgwick }

This instrument was acknowledged before me on this 23rd day of March, 2017, by Michael J. Boyd, President Wichita Destination Developers Inc. ETAL.

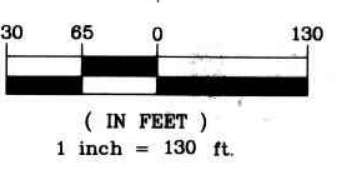
Carol M. Schultz
Notary Public
My Commission Expires: May 5, 2017

By: Michael J. Boyd
Michael J. Boyd, President, WDDMBB LLC, a Kansas Limited Liability Company.

State of Kansas } SS
County of Sedgwick }

This instrument was acknowledged before me on this 23rd day of March, 2017, by Michael J. Boyd, President, WDDMBB LLC, a Kansas Limited Liability Company.

Carol M. Schultz
Notary Public
My Commission Expires: May 5, 2017



LEGEND
D Deeded
M Measured
○ 3/8" Rebar (found) BAUGHMAN
● 3/8" Rebar (found) MKEC
▲ 1/2" Iron Pipe in Thimble (found)
□ 3/8" Rebar (set) KEMPA CLS 157

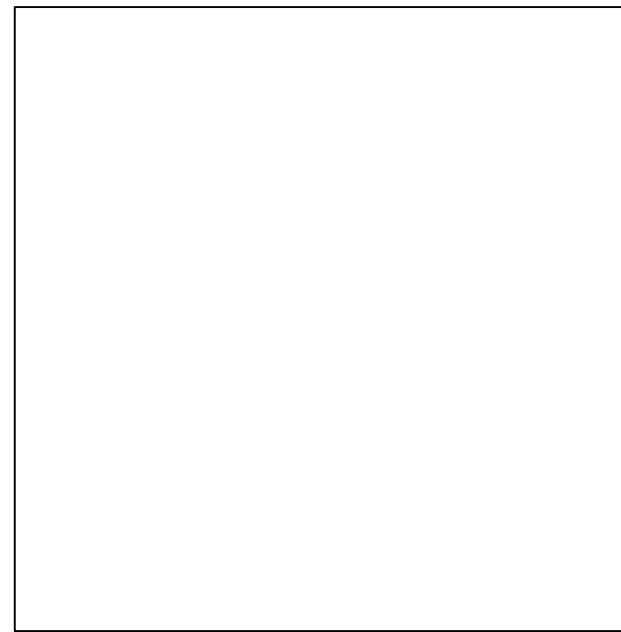
PC 263-5

Renaissance Infrastructure Consulting
5015 NW CANAL STREET, SUITE 100
RIVERSIDE, MISSOURI 64150
816.800.0950
WWW.RIC-CONSULT.COM

| NO. | BY | DATE | REVISION | |
|-----|----|------|----------|-----------------------------------|
| 1 | PC | DB | 11/12/19 | PER CITY COMMENTS |
| 2 | PC | DB | 10/16/19 | UPDATED PER LATEST UTILITY LAYOUT |
| 3 | PC | DB | 7/1/19 | PER CITY COMMENTS |

GENERAL NOTES

- The Contractor shall comply with all applicable safety regulations. All construction shall be completed following current City Standard Specifications and Special Provisions.
- Contractor will be required to provide notice to utility companies a minimum of seventy-two (72) hours prior to any excavation, as follows:
Kansas One-Call 316.687.2470
The Contractor must notify the following in case of as emergency:
AT&T 1.800.246.8464
Black Hills Energy 1.800.694.8989
City of Wichita Water 316.268.4555
City of Wichita Sewer 316.268.4073
City of Wichita Stormwater 316.268.4090
City of Wichita Traffic 316.268.4034
Cox Communication 1.888.249.3530
Kansas Gas Service 1.888.482.4950
Westar Energy 1.800.544.4857
- Utility service lines, poles, ect. are to be adjusted as necessary by others prior to construction unless the plans specifically call for their adjustment by the Contractor or unless the plans specifically identify a utility to be adjusted by its owner during construction. Existing utilities and their location, as shown on the plans, represent the best information obtainable for design. The Contractor will be required to work around existing utilities within the right-of-way which do not conflict with proposed construction.
- Rubble from the removal of miscellaneous structures and excess excavation which is to be wasted shall be disposed of on sites to be provided by the Contractor. These sites shall be approved by the Engineer as to suitability, appearance and the site location. Locations, in the opinion of the Engineer, that will leave an unsightly appearance will not be approved. All disposable sites must be approved by the Kansas Department of Health and Environment. Material either stockpiled or disposed of in a flood plain would require a Kansas State Board of Agriculture permit. Any material buried or stockpiled beyond approved construction limits would require an additional archeological investigation unless buried in a previously approved borrow location.
- Trees and shrubs in public right-of-way which are in direct conflict with proposed new construction shall be removed by the Contractor with the Engineer's approval. Trees and shrubs which are not in direct conflict with proposed new construction shall be saved and protected from damage.
- The Contractor shall give all property owners and / or tenants of developed property abutting the construction of this project a minimum of ten (10) days notice prior to the start of construction.
- The Contractor shall be responsible for preserving property irons. The Contractor will be required to re-established any property irons which are damage or destroyed by his construction operations. Such irons shall be re-established by a licensed land surveyor in accordance with state laws.
- The Water Distribution Division shall field locate valves one time during construction when requested by the Contractor. It shall be the Contractor's responsibility to preserve such field locations during the construction process. Water valves, valve boxes or fire hydrants damaged during construction shall be repaired by the Contractor at their own expense. Valve boxes and water meters within the project limits shall be adjusted to match field grades.
- The Contractor shall notify the consultant engineer and Tim Mason with the City at 316.268.4574 with the anticipated construction start date and notify them of project completion. Staking and inspection for this project will be the responsibility of the Contractor.
- If traffic is impacted by construction, a traffic control plan must be submitted and approved by the City Traffic Engineer, Brian Coon at traffic@wichita.gov before construction can begin. The Contractor shall be responsible for all traffic control measures to facilitate construction. All construction zone markings and signage shall conform to the latest version of the Manual on Uniform Traffic Control Devices (MUTCD) as published by the US Department of Transportation, Federal Highway Administration. All cost associated with construction markings and signage shall be the Contractors responsibility.
- All elevations shown are Project Datum (Project Datum = NAVD 88 - 0.63')
- All areas disturbed during construction that will not be under proposed pavement shall be restored to match existing conditions.
- A portion of excess excavated material shall be mounded around manholes which extent more than one (1) foot above the existing ground. Such mound shall be constructed with new development a six (6) foot diameter with 4 to 1 side slopes down to the original ground. The elevation of the flat top of the mound shall be 0.4 foot below the top of the manhole.
- Geotechnical report available upon request.
- Contractor shall limit the extent of trench openings overnight and weekends to less than 50 feet.
- Contractor shall provide positive drainage away from all manhole covers.
- City maintenance of storm sewer ends at right-of-way or easement line.
- Any sidewalk, drive approach or street pavement removed to construct project, must have a pavement cut permit and be replaced by the City contractor. Permits can be obtained by calling 316.268.4501 or 316.268.4480.
- The inspection firm shall submit to the City Stormwater Maintenance Division a Digital copy of the CCTV inspection of the conduits and structures following construction. The digital file formation shall be compatible with the City input template. A copy of the template is available upon request at 316.268.4090



BENCHMARKS:

TBM 1:
Chiseled Square cut on E. Curb of island in center of Greenwich Road.
Approximately 60' S. of intersection of westbound ramp to K-96.
RIC Project Datum Elev. = 1373.08

TBM 2:
Chiseled Square cut on south curb of 27th Street approximately 690 feet east of intersection of Greenwich Road.
RIC Project Datum Elev. = 1378.40

TBM 3:
Chiseled Square cut on south side of 27th Street approximately 330 feet east of intersection of Greenwich Road.
RIC Project Datum Elev. = 1378.36

PROJECT BENCHMARK

Chiseled square cut, center front face of inlet East side of Greenwich Road,
342 feet +/- South of the intersection of East 27' Street and Greenwich Road
Project Elevation = 1377.42
KDOT Elevation = 1378.05
(Project Elevation is -0.63 feet from KDOT)

| SUMMARY OF QUANTITIES | | | |
|-----------------------|---------------------------------------|----------|------|
| ITEM | DESCRIPTION | QUANTITY | UNIT |
| 1 | 12" HDPE | 61 | LF |
| 2 | 15" HDPE | 71 | LF |
| 3 | 5' x 3' Type I Curb Inlet | 3 | EA |
| 4 | 7' x 5' Special Type II Inlet/Manhole | 1 | EA |
| 5 | Seeding | 1 | LS |
| 6 | Erosion Control | 1 | LS |
| 7 | Connection to Existing Storm Sewer | 3 | LS |

Quantities are for Information Only. Contractor to Verify all Quantities Prior to Construction.

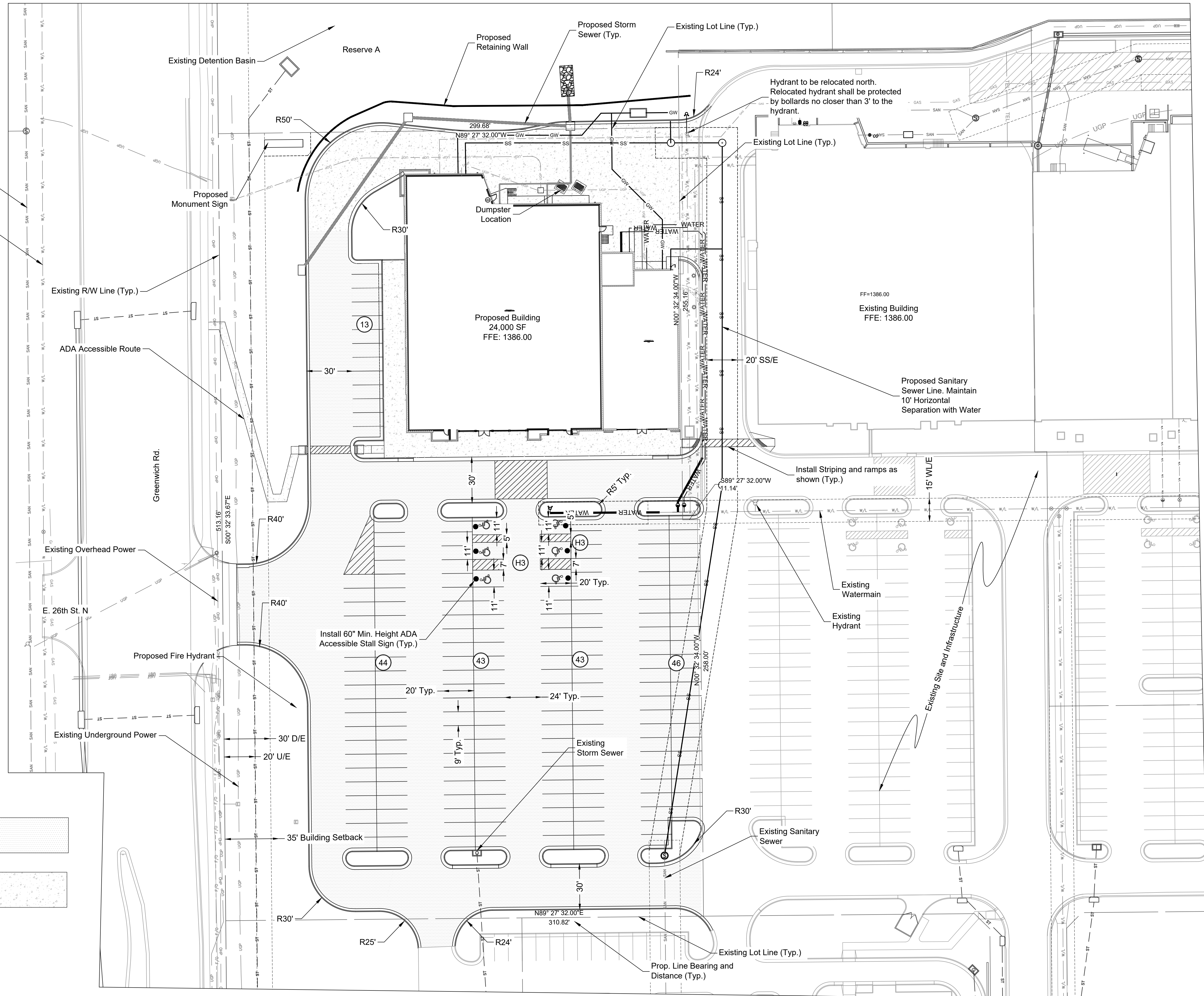
| NO. | BY | DATE | REVISION |
|-----|----|----------|-----------------------------------|
| | PC | 11/12/19 | PER CITY COMMENTS |
| | DB | 10/16/19 | UPDATED PER LATEST UTILITY LAYOUT |
| | PC | 7/1/19 | PER CITY COMMENTS |

Renaissance Infrastructure Consulting
5015 NW CANAL STREET, SUITE 100
RIVERSIDE, MISSOURI 64150
816-800-0950
WWW.RIC-CONSULT.COM

| NO. | BY | DATE | PER CITY COMMENTS | REVISION |
|-----|----|----------|-----------------------------------|----------|
| PC | DB | 11/12/19 | PER CITY COMMENTS | |
| PC | DB | 10/16/19 | UPDATED PER LATEST UTILITY LAYOUT | |
| PC | DB | 7/1/19 | PER CITY COMMENTS | |

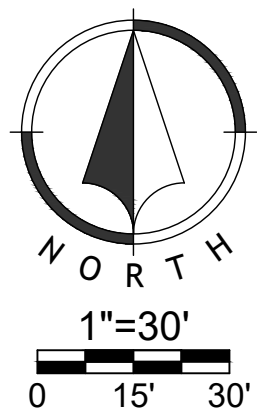
Renaissance Infrastructure Consulting

5015 NW CANAL STREET, SUITE 100
RIVERSIDE, MISSOURI 64150
816-800-0950
WWW.RIC-CONSULT.COM



LEGAL DESCRIPTION

Lot 1, Block A, The Shops at Wichita
Destination Development Addition, an
Addition to Wichita, Kansas.



Legend

Employee Parking (00)

Trailer Parking (T00)

Truck Dock (D00)

ADA Parking (H00)

Paving Schedule

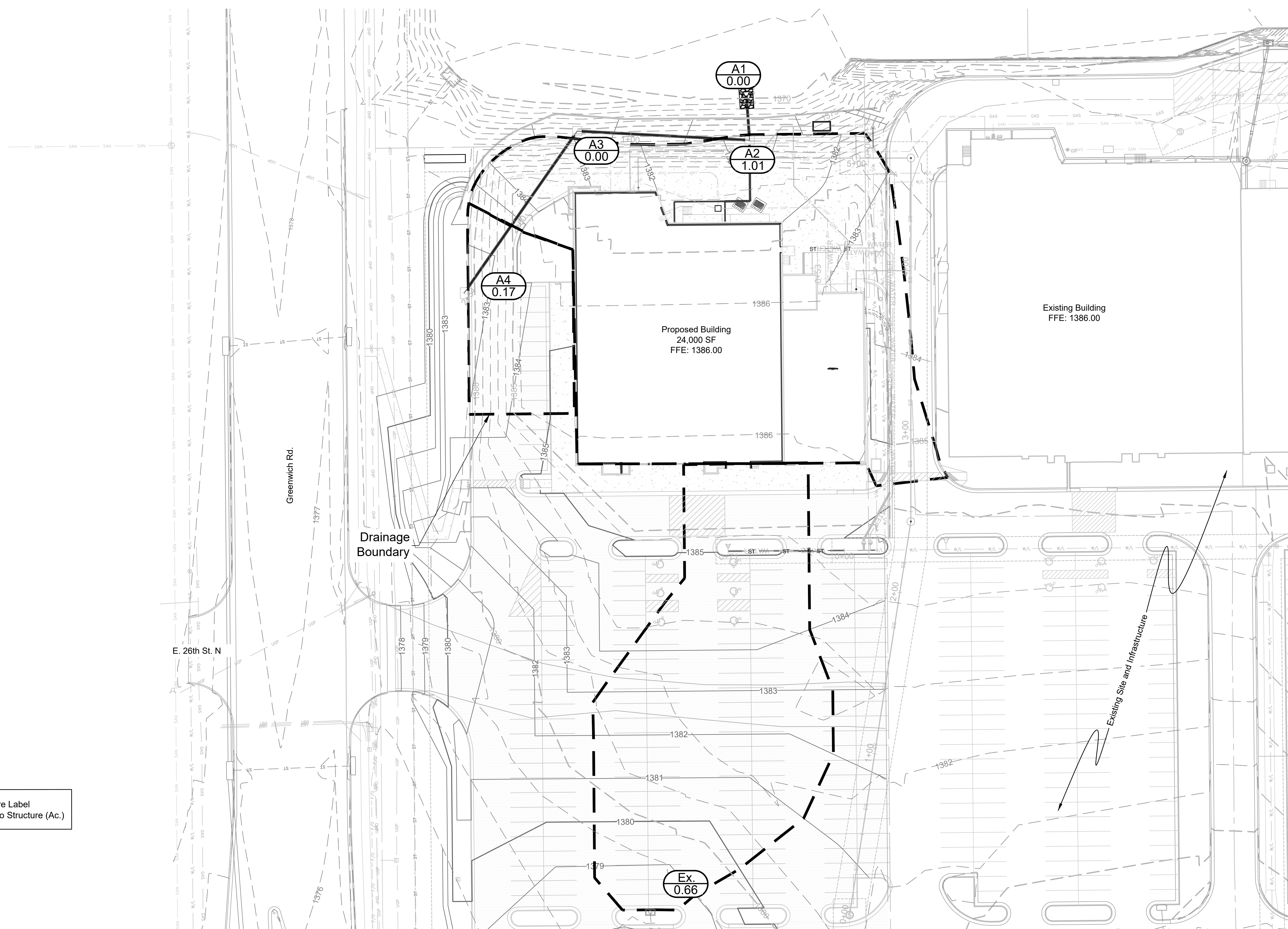
Asphaltic Concrete Pavement

8" Portland Concrete Pavement
and 4" Concrete Sidewalk

(See Geotech Report and Standard
Detail Sheets for Additional Information)

| NO. | BY | DATE | PER CITY COMMENTS |
|-----|----|----------|-----------------------------------|
| PC | DB | 11/12/19 | PER CITY COMMENTS |
| PC | DB | 10/16/19 | UPDATED PER LATEST UTILITY LAYOUT |
| PC | DB | 7/1/19 | PER CITY COMMENTS |

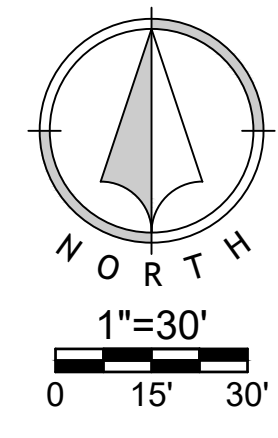
Renaissance Infrastructure Consulting
5015 NW CANAL STREET, SUITE 100
RIVERSIDE, MISSOURI 64150
816-800-0950
WWW.RIC-CONSULT.COM

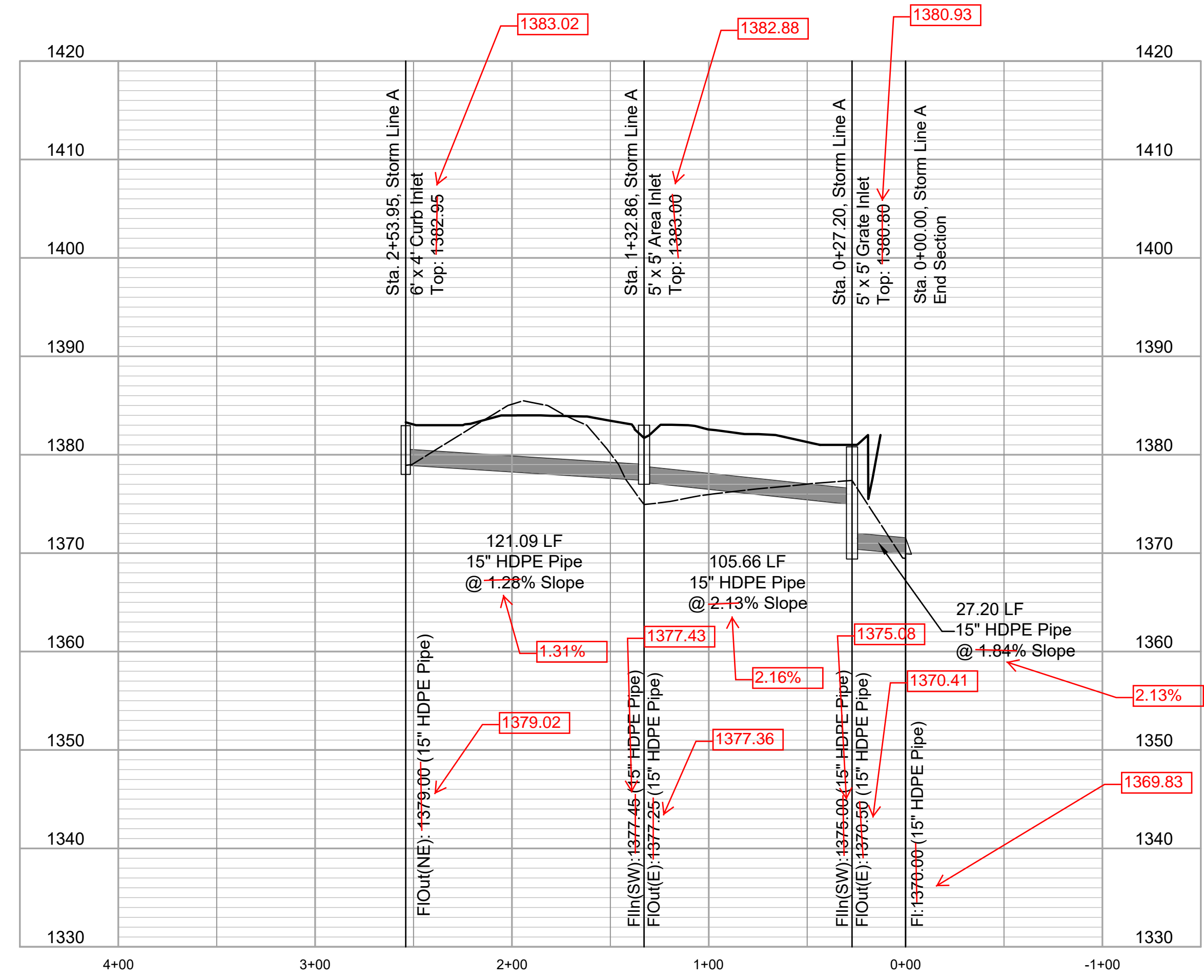
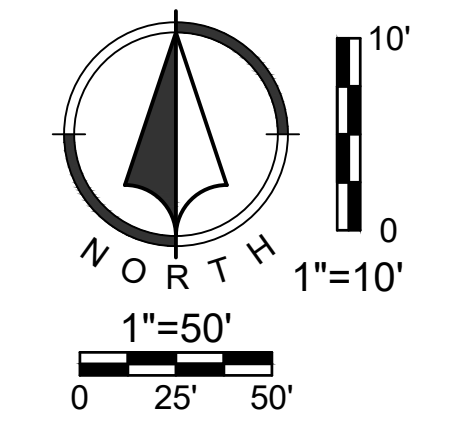
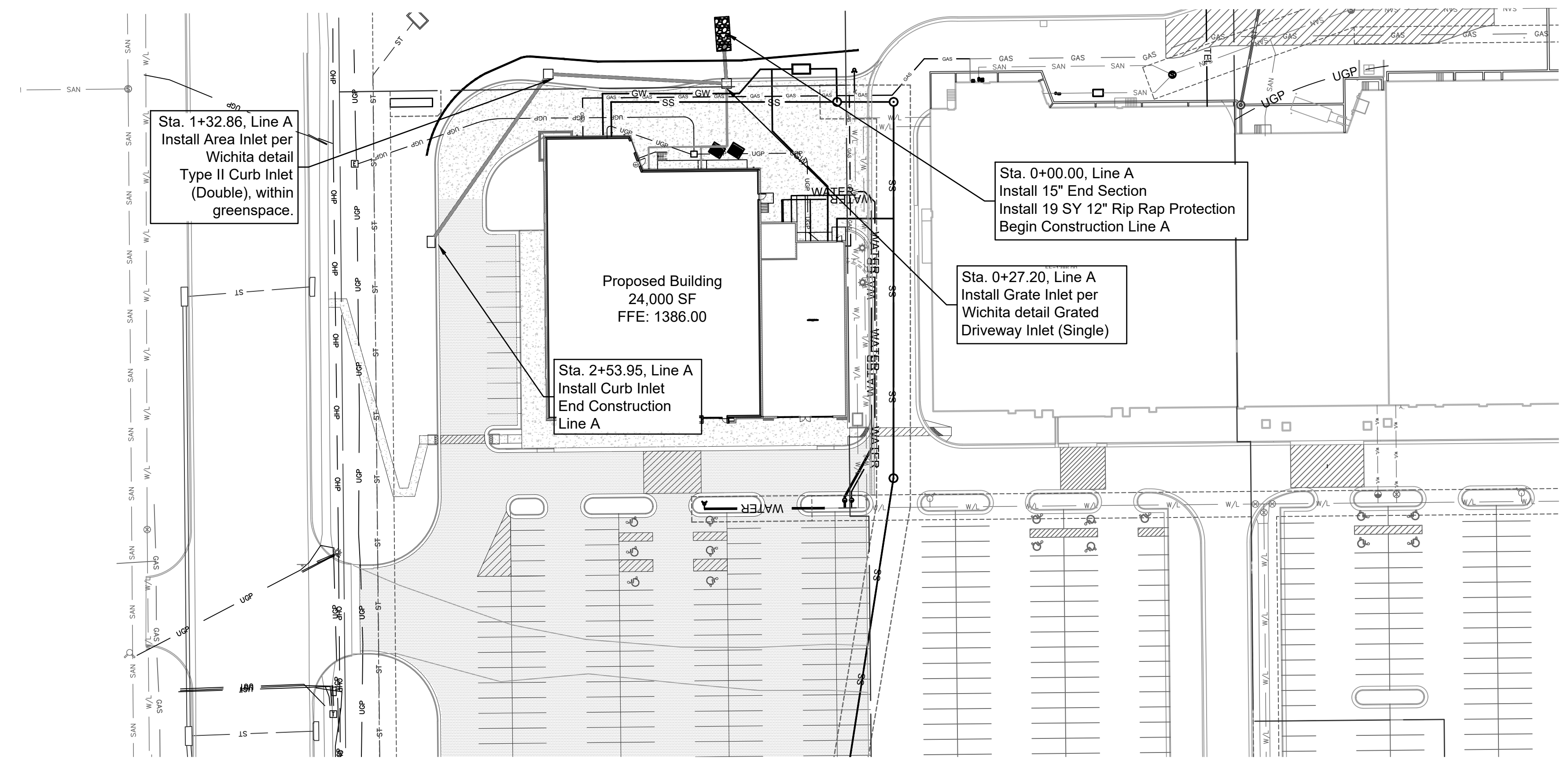


A0
1.00
A0-Structure Label
3.00-Area to Structure (Ac.)

Nov 12, 2019, 1:16pm
Z:\RIC Design\2019\19-0133\DWG\19-0133 PPD.dwg

| Line | Point | Overland Flow | | | | System Flow | | | | Pipe Design | | | | | | | | | | Structure Design | | | | | | | | | | | | | | | | | | |
|------|-------|------------------|-----------|--------------|-----------|----------------------|-----------------------|-------------------|-------------------|--------------------|------------------|---------------|----------------------|-----------------------|------------------------|----------|----------|-----------|------------|---------------------|-------------------|--------------------|----------------|-------------------|---------------------|--------------------------|----------------------------|---------------------|------------------|----------------|---------------|----------------|---------------|--------------------------|--------------------------|-----------------------------|------------------------------|----------------------|
| | | Trib. Area (Ac.) | "C" Value | Design Storm | "K" Value | Time of Conc. (min.) | Intensity I (in./hr.) | Trib Runoff (cfs) | Bypass flow (cfs) | Total Runoff (cfs) | Total Area (Ac.) | Total (K*A*C) | Time of Conc. (min.) | Intensity I (in./hr.) | System Discharge (cfs) | U/S Node | D/S Node | Pipe Type | Pipe Shape | Pipe Diameter (in.) | Pipe Length (ft.) | Mannings "n" value | Pipe Slope (%) | Design Flow (cfs) | Pipe Capacity (cfs) | Full Flow Velocity (fps) | Design Flow Velocity (fps) | Depth of Flow (in.) | Flow Time (min.) | U/S Invert El. | U/S Crown El. | D/S Invert El. | D/S Crown El. | U/S Depth of Cover (ft.) | D/S Depth of Cover (ft.) | Headwater Inlet Elev. (EGL) | Headwater Outlet Elev. (EGL) | Inlet/Outlet Control |
| A | A4 | 0.170 | 0.90 | 10 | 1 | 5.00 | 7.99 | 1.22 | 0.00 | 1.22 | 0.170 | 0.15 | 7.99 | 1.22 | A4 | A3 | HDPE | Round | 15 | 121.09 | 0.012 | 0.83 | 1.22 | 6.33 | 5.16 | 3.93 | 4.4 | 0.51 | 1380.00 | 1381.25 | 1379.00 | 1380.25 | 2.75 | 3.45 | 1380.39 | 1379.60 | I | 1384.00 |
| | | | | 100 | 1.25 | 5.00 | 11.32 | 1.92 | 0.00 | 1.92 | | 0.17 | 5.00 | 11.32 | | | | | | | | | 1.92 | | | | | | | | | | | | | | | |
| | A3 | 0.000 | 0.90 | 10 | 1 | 5.00 | 7.99 | 0.00 | 0.00 | 0.00 | 3.170 | 1.05 | 7.99 | 8.41 | A3 | A2 | HDPE | Round | 15 | 105.66 | 0.012 | 2.84 | 8.41 | 11.75 | 9.57 | 10.38 | 9.3 | 0.17 | 1378.00 | 1379.25 | 1375.00 | 1376.25 | 4.45 | 4.60 | 1379.01 | 1377.45 | I | 1383.70 |
| | | | | 100 | 1.25 | 5.00 | 11.32 | 0.00 | 0.00 | 0.00 | | 1.30 | 5.07 | 11.32 | | | | | | | | | 14.66 | | | | | | | | | | | | | | | |
| | A2 | 1.010 | 0.90 | 10 | 1 | 5.00 | 7.99 | 7.26 | 0.00 | 7.26 | 13.350 | 4.22 | 7.99 | 33.68 | A2 | A1 | HDPE | Round | 15 | 27.95 | 0.012 | 1.07 | 33.68 | 7.22 | 5.89 | 5.89 | 15.0 | 0.08 | 1370.30 | 1371.55 | 1370.00 | 1371.25 | 9.30 | -1371.25 | 1372.48 | 1371.79 | I | 1380.85 |
| | | | | 100 | 1.25 | 5.00 | 11.32 | 11.43 | 0.00 | 11.43 | | 5.10 | 5.19 | 11.32 | | | | | | | | | 57.73 | | | | | | | | | | | | | | | |





AS BUILTS

Contractor: Sooter Excavation
Inspector: Matt Perez
Date: 12-24-2019

KEMILLER
ENGINEERING PA

117 E. Lewis,
Wichita, KS 67202

(316)264-0242

| NO. | BY | DATE | REVISION |
|-----|----|----------|-----------------------------------|
| PC | DB | 11/12/19 | PER CITY COMMENTS |
| PC | DB | 10/16/19 | UPDATED PER LATEST UTILITY LAYOUT |
| PC | DB | 7/1/19 | PER CITY COMMENTS |

Renaissance
Infrastructure
Consulting

5015 NW CANAL STREET, SUITE 100
RIVERSIDE, MISSOURI 64150
816.800.0950
WWW.RIC-CONSULT.COM

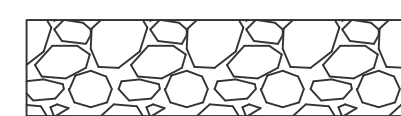
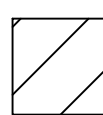
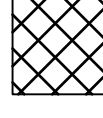

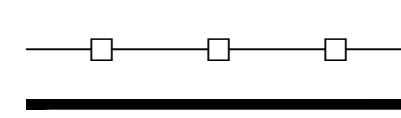


| NO. | BY | DATE | PER CITY COMMENTS | REVISION |
|-----|----|----------|-----------------------------------|----------|
| PC | DB | 11/12/19 | PER CITY COMMENTS | |
| PC | DB | 10/16/19 | UPDATED PER LATEST UTILITY LAYOUT | |
| PC | DB | 7/1/19 | PER CITY COMMENTS | |

Renaissance Infrastructure Consulting
5015 NW CANAL STREET, SUITE 100
RIVERSIDE, MISSOURI 64150
816-800-0950
WWW.RIC-CONSULT.COM

EROSION CONTROL NOTES

- Erosion control plan modifications shall be required if the plan fails to substantially control erosion and offsite sedimentation.
- The retention of access controls and sediment controls shall be required for areas where seed has not established 70% cover.
- The contractor shall temporarily seed and mulch all disturbed areas if soil disturbing activities cease and will not resume for more than 14 days. Stabilization activities must also be completed within 14 days.
- Install "J" Hooks on silt fence every 100 LF

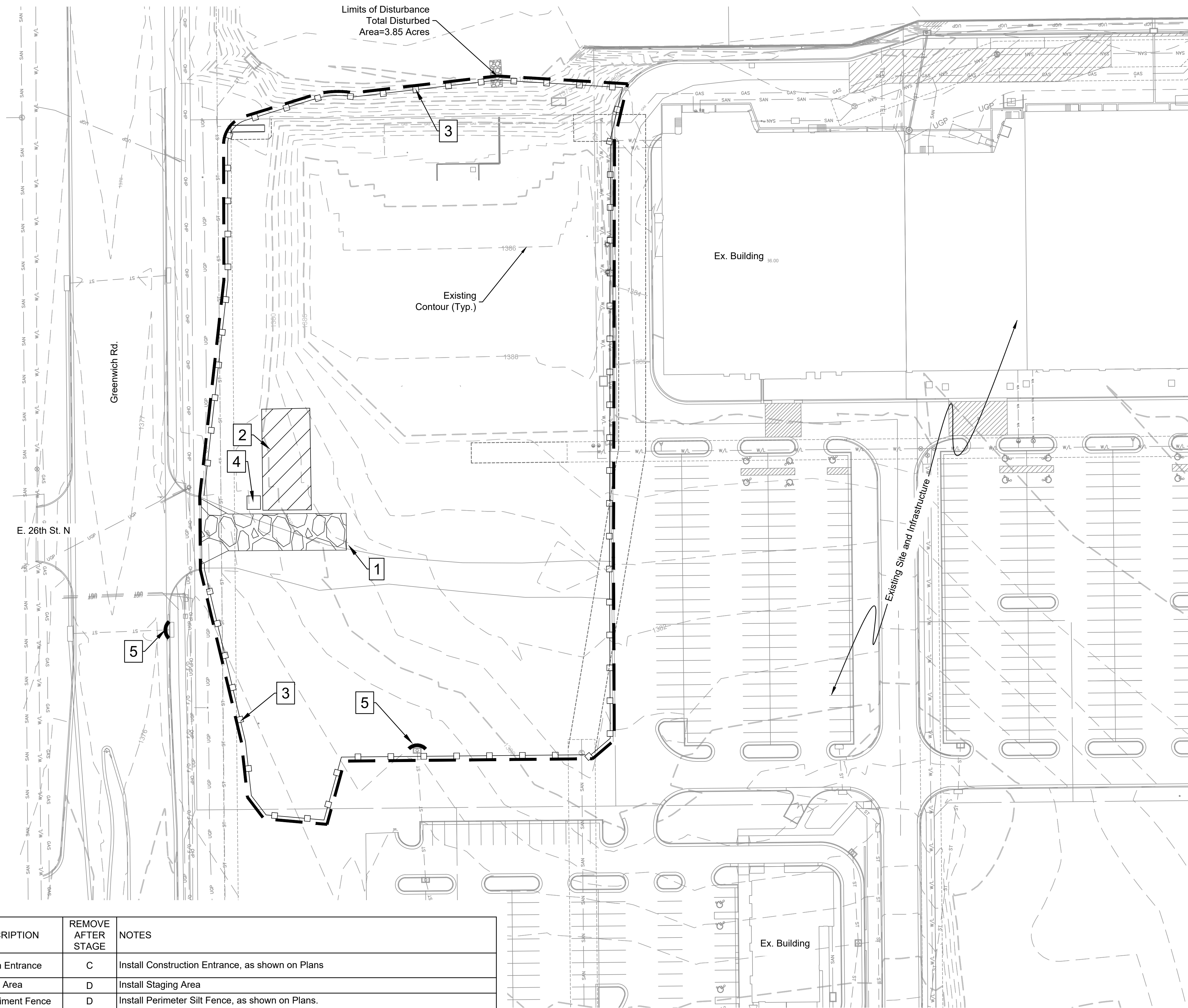
EROSION CONTROL LEGEND

-  Stabilized Construction Entrance
-  Staging Area
-  Stockpile Area
-  Concrete Washout
-  Limits of Disturbance
-  Perimeter Silt Fence
-  Inlet Protection

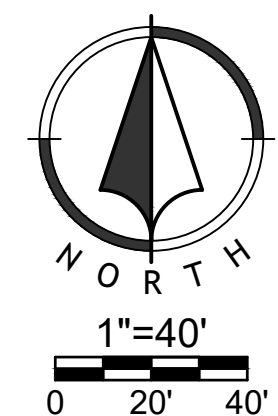
WRITTEN SEQUENCING

- Implement Pre-Clearing Plan:**
All temporary structural BMP's shown on the pre-clearing plan must be in place before the general clearing operations. Clearing necessary to place temporary structural BMP's is the minimum required for installation. Coordinate clearing necessary to place temporary structural BMP's with local weather forecast so that clearing and placement may be completed within a forecast dry period. Stabilize all erosion control measures after installation. Temporary Barrier Fence shall be in Place, around areas not to be disturbed, prior to any construction activities.
- Clear and Stabilize Work Areas:**
Grade contractor areas and place all-weather surface on contractor areas.
- Clearing and Grubbing:**
After Phase I BMP's are installed, contractor may clear, grub, and demo required areas as necessary.

Disturbed Area for Site Improvements : 3.85 Acres



| PROJECT STAGE | PLAN REFERENCE NUMBER | BMP DESCRIPTION | REMOVE AFTER STAGE | NOTES |
|--|-----------------------|--------------------------|--------------------|--|
| Phase I A-Prior to Land Disturbance | 1 | Construction Entrance | C | Install Construction Entrance, as shown on Plans |
| | 2 | Staging Area | D | Install Staging Area |
| | 3 | Perimeter Sediment Fence | D | Install Perimeter Silt Fence, as shown on Plans. |
| | 4 | Concrete Washout | D | Install Concrete Washout as Shown on Plans Prior to Pouring Any Concrete |
| | 5 | Curb Inlet Protection | D | Install Filter Bags around Existing Curb Inlets |
| Phase II B-Site Grading | 6 | Area Inlet Protection | D | Install Filter Bags around Existing Area Inlets |
| | 7 | Stockpile Area | D | Install Sediment Fence a Minimum 5' Beyond Toe of Slope |
| | 8 | Curb Inlet Protection | C | Install Filter Around Proposed Curb Inlet |
| Phase II C-Site Construction | 9 | Sediment Fence | D | Install Sediment Fence, as shown on Plans |
| | 10 | Turf Reinforcement Mat | D | Install Turf Reinforcement Mat in area shown on Plans |
| Phase III D-Final Stabilization | 11 | Seeding | N/A | Redistribute Topsoil and Seed and Mulch all Disturbed Area. SOd Right-of-Way and areas shown on Plans. Stabilization Complete when 100% of Disturbed Area is Established with Perennial Vegetation with a Density of 70% |



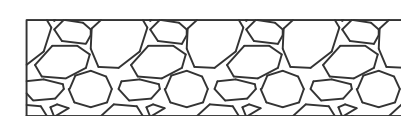
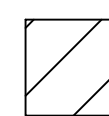


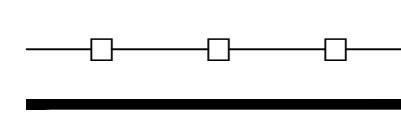


| NO. | BY | DATE | PER CITY COMMENTS | REVISION |
|-----|----|----------|-----------------------------------|----------|
| PC | DB | 11/12/19 | PER CITY COMMENTS | |
| PC | DB | 10/16/19 | UPDATED PER LATEST UTILITY LAYOUT | |
| PC | DB | 7/1/19 | PER CITY COMMENTS | |

Renaissance Infrastructure Consulting
5015 NW CANAL STREET, SUITE 100
RIVERSIDE, MISSOURI 64150
816-800-0950
WWW.RIC-CONSULT.COM

EROSION CONTROL NOTES

- Erosion control plan modifications shall be required if the plan fails to substantially control erosion and offsite sedimentation.
- The retention of access controls and sediment controls shall be required for areas where seed has not established 70% cover.
- The contractor shall temporarily seed and mulch all disturbed areas if soil disturbing activities cease and will not resume for more than 14 days. Stabilization activities must also be completed within 14 days.
- Install "J" Hooks on silt fence every 100 LF

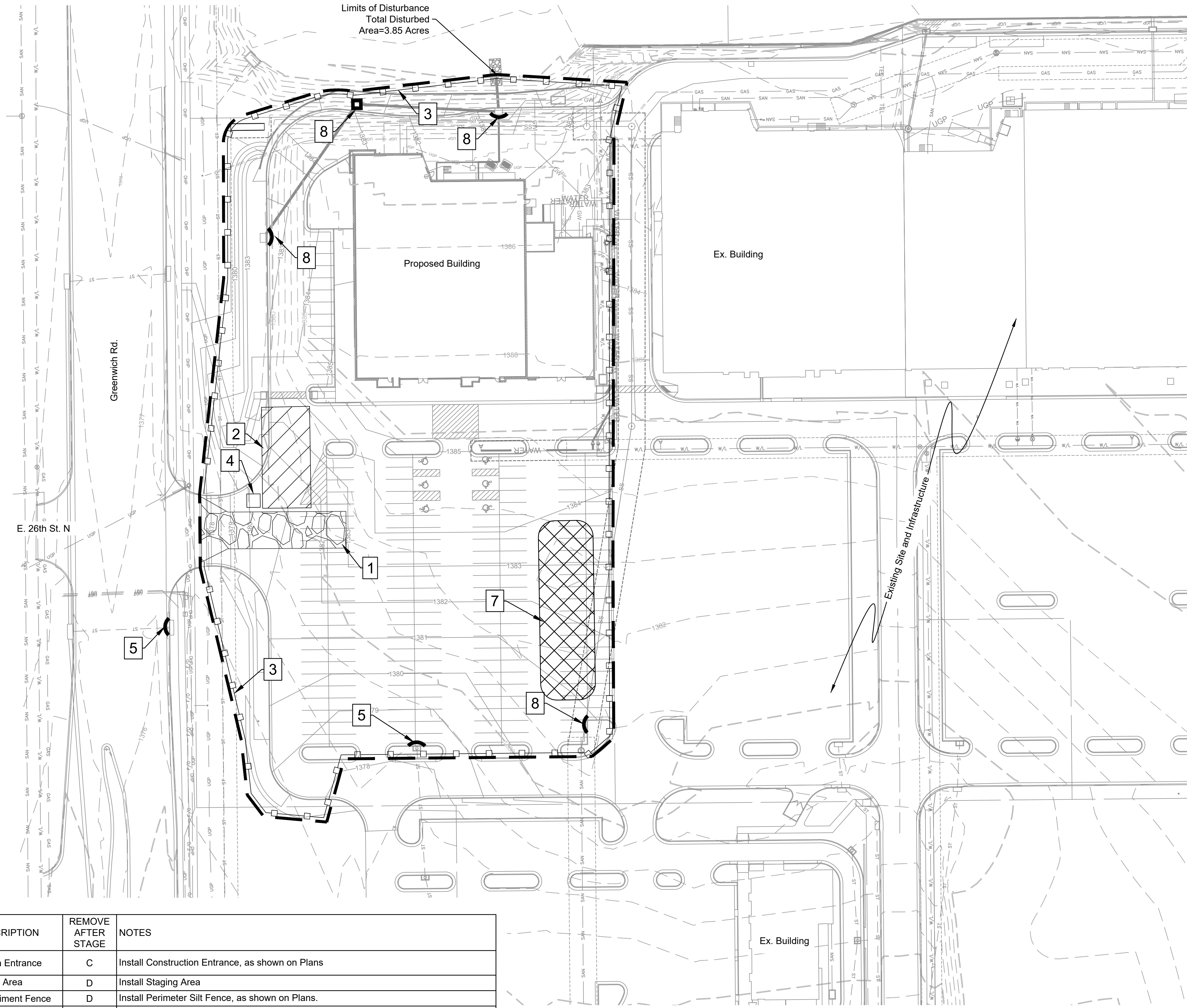
EROSION CONTROL LEGEND

| | |
|---|----------------------------------|
|  | Stabilized Construction Entrance |
|  | Staging Area |
|  | Stockpile Area |
|  | Concrete Washout |
|  | Limits of Disturbance |
|  | Perimeter Silt Fence |
|  | Inlet Protection |

WRITTEN SEQUENCING

- Maintain Phase I Erosion Control Measures:**
Contractor to maintain Phase I erosion control protection and repair/modify as necessary.
- Earthwork and Utility Construction:**
Install Phase II erosion control protection measures as necessary during Phase II construction.

Disturbed Area for Site Improvements : 3.85 Acres

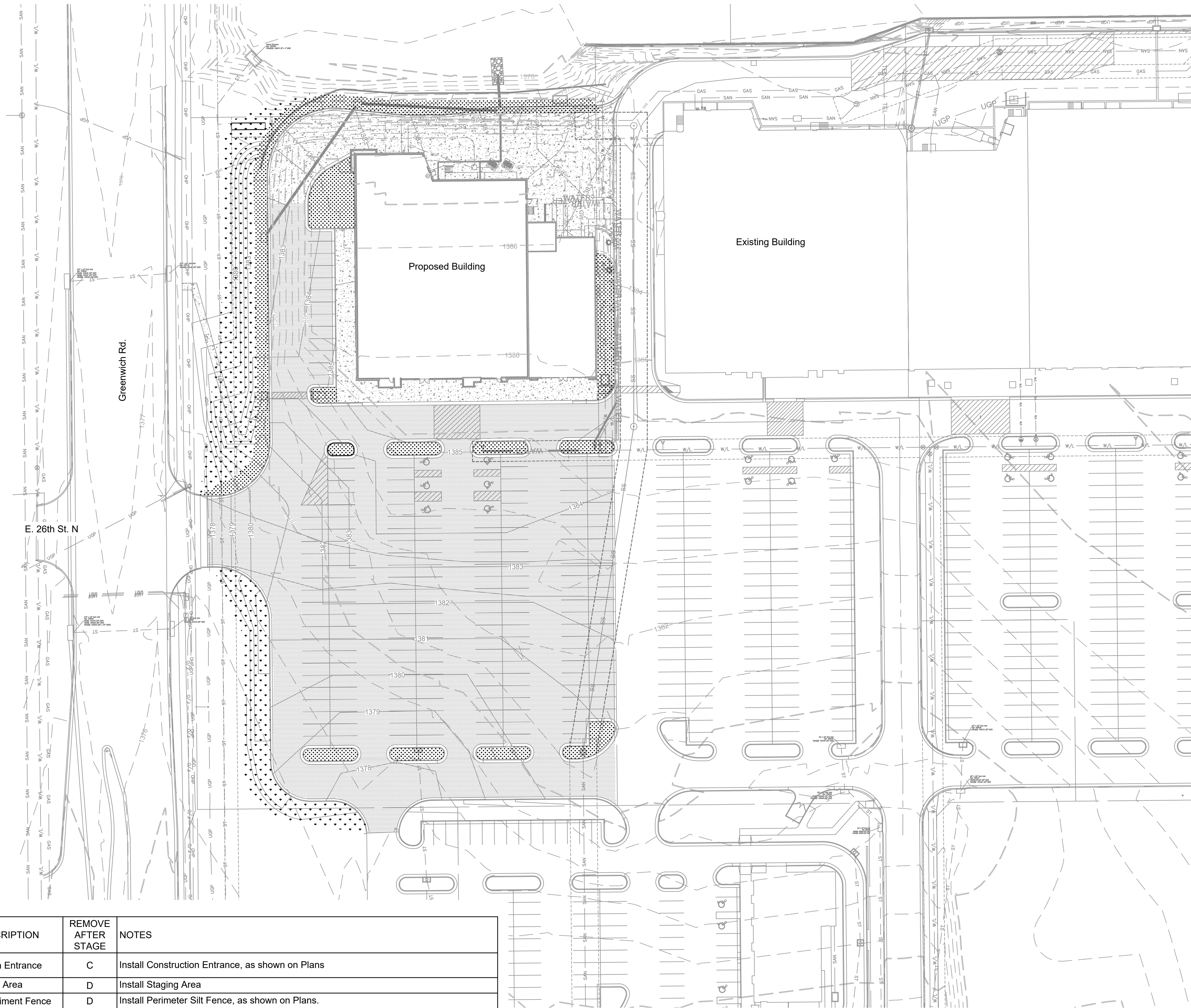


| PROJECT STAGE | PLAN REFERENCE NUMBER | BMP DESCRIPTION | REMOVE AFTER STAGE | NOTES |
|--|-----------------------|--------------------------|--------------------|--|
| Phase I A-Prior to Land Disturbance | 1 | Construction Entrance | C | Install Construction Entrance, as shown on Plans |
| | 2 | Staging Area | D | Install Staging Area |
| | 3 | Perimeter Sediment Fence | D | Install Perimeter Silt Fence, as shown on Plans. |
| | 4 | Concrete Washout | D | Install Concrete Washout as Shown on Plans Prior to Pouring Any Concrete |
| | 5 | Curb Inlet Protection | D | Install Filter Bags around Existing Curb Inlets |
| | 6 | Area Inlet Protection | D | Install Filter Bags around Existing Area Inlets |
| Phase II B-Site Grading | 7 | Stockpile Area | D | Install Sediment Fence a Minimum 5' Beyond Toe of Slope |
| | 8 | Curb Inlet Protection | C | Install Filter Around Proposed Curb Inlet |
| Phase II C-Site Construction | 9 | Sediment Fence | D | Install Sediment Fence, as shown on Plans |
| | 10 | Turf Reinforcement Mat | D | Install Turf Reinforcement Mat in area shown on Plans |
| Phase III D-Final Stabilization | 11 | Seeding | N/A | Redistribute Topsoil and Seed and Mulch all Disturbed Area. SOd Right-of-Way and areas shown on Plans. Stabilization Complete when 100% of Disturbed Area is Established with Perennial Vegetation with a Density of 70% |



| NO. | BY | DATE | PER CITY COMMENTS | REVISION |
|-----|----|----------|-----------------------------------|----------|
| 1 | DB | 11/12/19 | PER CITY COMMENTS | |
| 2 | DB | 10/16/19 | UPDATED PER LATEST UTILITY LAYOUT | |
| 3 | DB | 7/1/19 | PER CITY COMMENTS | |


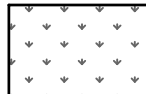
Renaissance Infrastructure Consulting
 5015 NW CANAL STREET, SUITE 100
 RIVERSIDE, MISSOURI 64150
 816.800.0950
 WWW.RIC-CONSULT.COM



EROSION CONTROL NOTES

1. Erosion control plan modifications shall be required if the plan fails to substantially control erosion and offsite sedimentation.
2. The retention of access controls and sediment controls shall be required for areas where seed has not established 70% cover.
3. The contractor shall temporarily seed and mulch all disturbed areas if soil disturbing activities cease and will not resume for more than 14 days. Stabilization activities must also be completed within 14 days.
4. Install "J" Hooks on silt fence every 100 LF

LEGEND

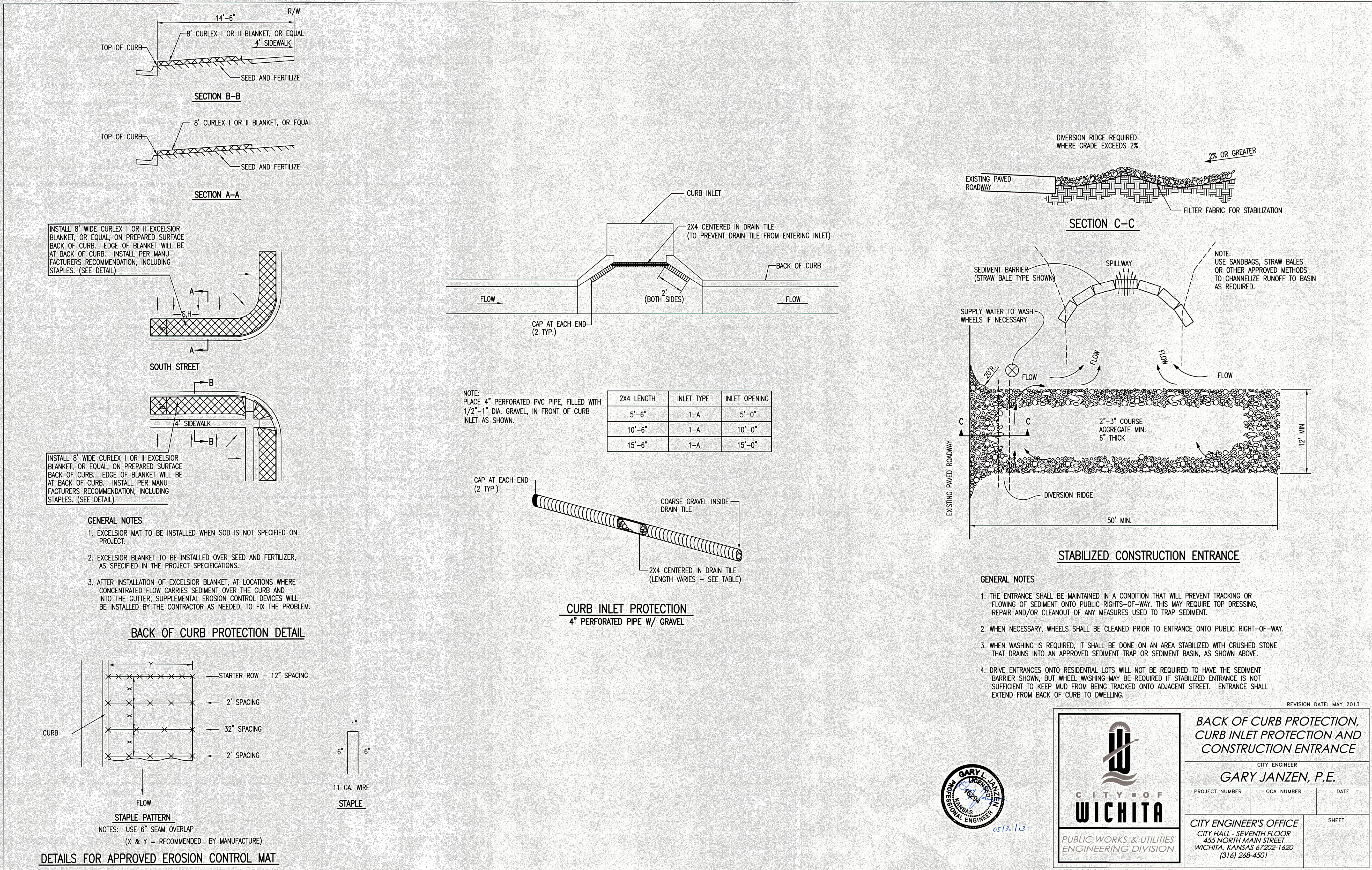
-  Sodded Areas
-  Seeded Areas

WRITTEN SEQUENCING

1. **Stabilize Site:**
Maintain all Phase II erosion control measures until the site is stabilized with 70% of perennial vegetation.

Disturbed Area for Site Improvements : 3.85 Acres

| PROJECT STAGE | PLAN REFERENCE NUMBER | BMP DESCRIPTION | REMOVE AFTER STAGE | NOTES |
|--|-----------------------|--------------------------|--------------------|--|
| Phase I A-Prior to Land Disturbance | 1 | Construction Entrance | C | Install Construction Entrance, as shown on Plans |
| | 2 | Staging Area | D | Install Staging Area |
| | 3 | Perimeter Sediment Fence | D | Install Perimeter Silt Fence, as shown on Plans. |
| | 4 | Concrete Washout | D | Install Concrete Washout as Shown on Plans Prior to Pouring Any Concrete |
| | 5 | Curb Inlet Protection | D | Install Filter Bags around Existing Curb Inlets |
| | 6 | Area Inlet Protection | D | Install Filter Bags around Existing Area Inlets |
| Phase II B-Site Grading | 7 | Stockpile Area | D | Install Sediment Fence a Minimum 5' Beyond Toe of Slope |
| | 8 | Curb Inlet Protection | C | Install Filter Around Proposed Curb Inlet |
| Phase II C-Site Construction | 9 | Sediment Fence | D | Install Sediment Fence, as shown on Plans |
| | 10 | Turf Reinforcement Mat | D | Install Turf Reinforcement Mat in area shown on Plans |
| Phase III D-Final Stabilization | 11 | Seeding | N/A | Redistribute Topsoil and Seed and Mulch all Disturbed Area, SOd Right-of-Way and areas shown on Plans. Stabilization Complete when 100% of Disturbed Area is Established with Perennial Vegetation with a Density of 70% |



CITY OF WICHITA
PUBLIC WORKS & UTILITIES ENGINEERING DIVISION

BACK OF CURB PROTECTION, CURB INLET PROTECTION AND CONSTRUCTION ENTRANCE

CITY ENGINEER
GARY JANZEN, P.E.

PROJECT NUMBER: _____ OCA NUMBER: _____ DATE: _____

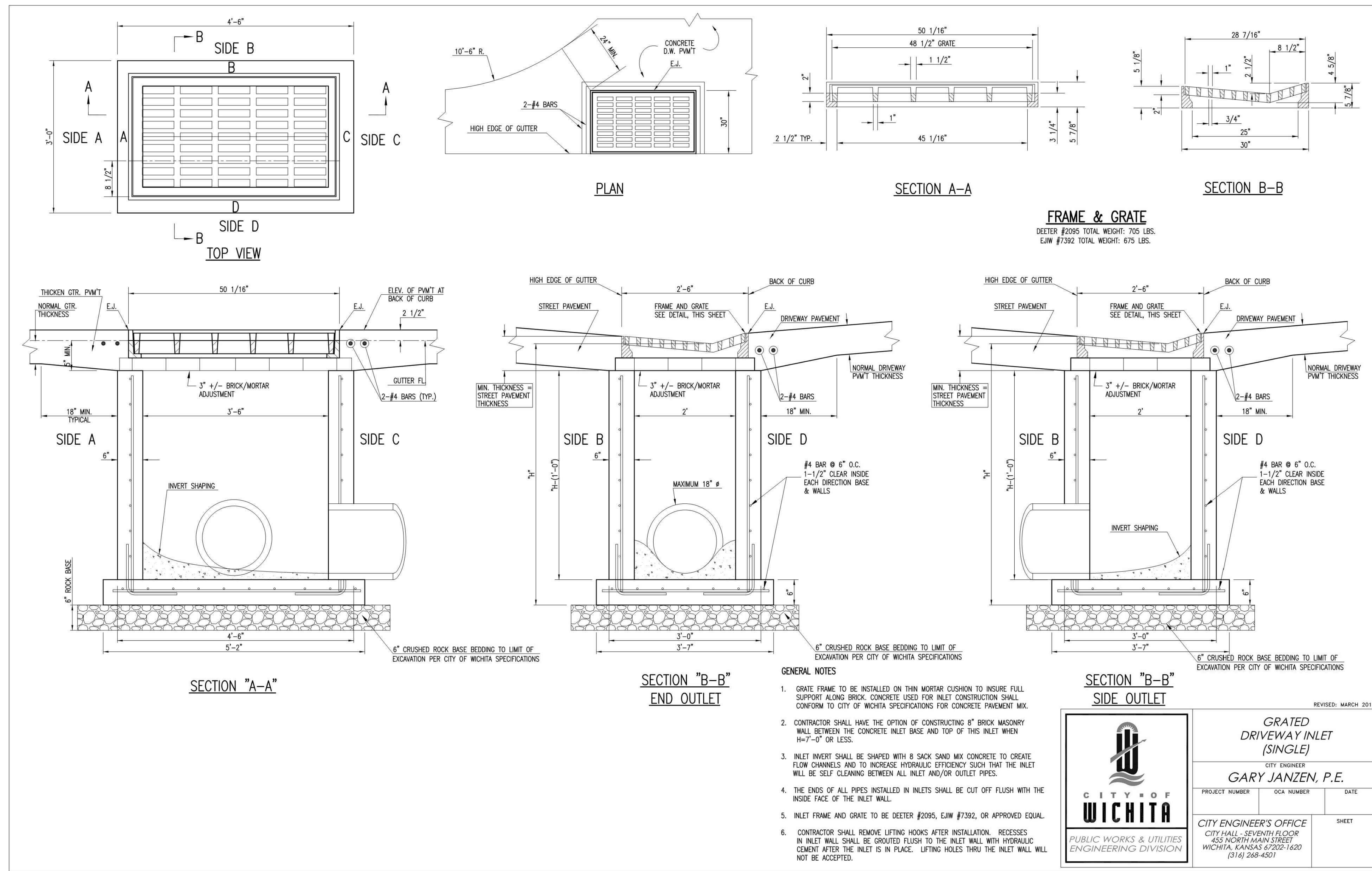
CITY ENGINEER'S OFFICE
CITY HALL - SEVENTH FLOOR
455 NORTH MAIN STREET
WICHITA, KANSAS 67202-1620
(316) 268-4301

SHEET

| NO. | BY | DATE | DESCRIPTION |
|-----|----|----------|-----------------------------------|
| 1 | PC | 11/12/19 | PER CITY COMMENTS |
| 2 | DB | 10/16/19 | UPDATED PER LATEST UTILITY LAYOUT |
| 3 | PC | 7/1/19 | PER CITY COMMENTS |

Renaissance Infrastructure Consulting

5015 NW CANAL STREET, SUITE 100
RIVERSIDE, MISSOURI 64150
816-800-0950
WWW.RIC-CONSULT.COM

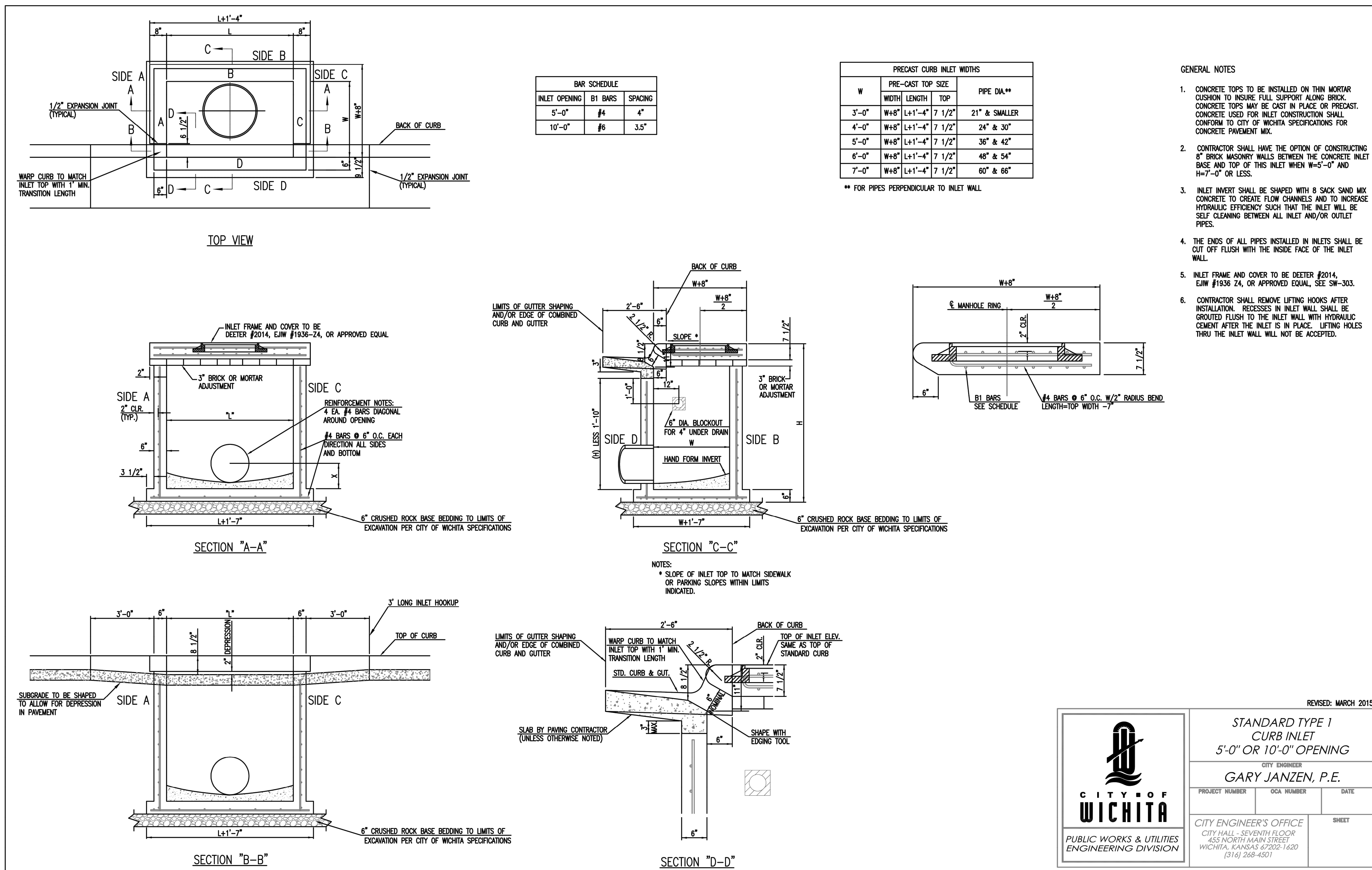


| NO. | BY | DATE | REVISION |
|-----|----|----------|-----------------------------------|
| 1 | PC | 11/12/19 | PER CITY COMMENTS |
| 2 | DB | 10/16/19 | UPDATED PER LATEST UTILITY LAYOUT |
| 3 | PC | 7/1/19 | PER CITY COMMENTS |

Renaissance Infrastructure Consulting

5015 NW CANAL STREET, SUITE 100
RIVERSIDE, MISSOURI 64150

816.800.0950
WWW.RIC-CONSULT.COM



Nov 12, 2019, 1:18pm
Z:\RIC Design\2019\19-0133\DWG\19-0133 PPD.dwg

Renaissance Infrastructure Consulting

CITY ENGINEER
GARY JANZEN, P.E.

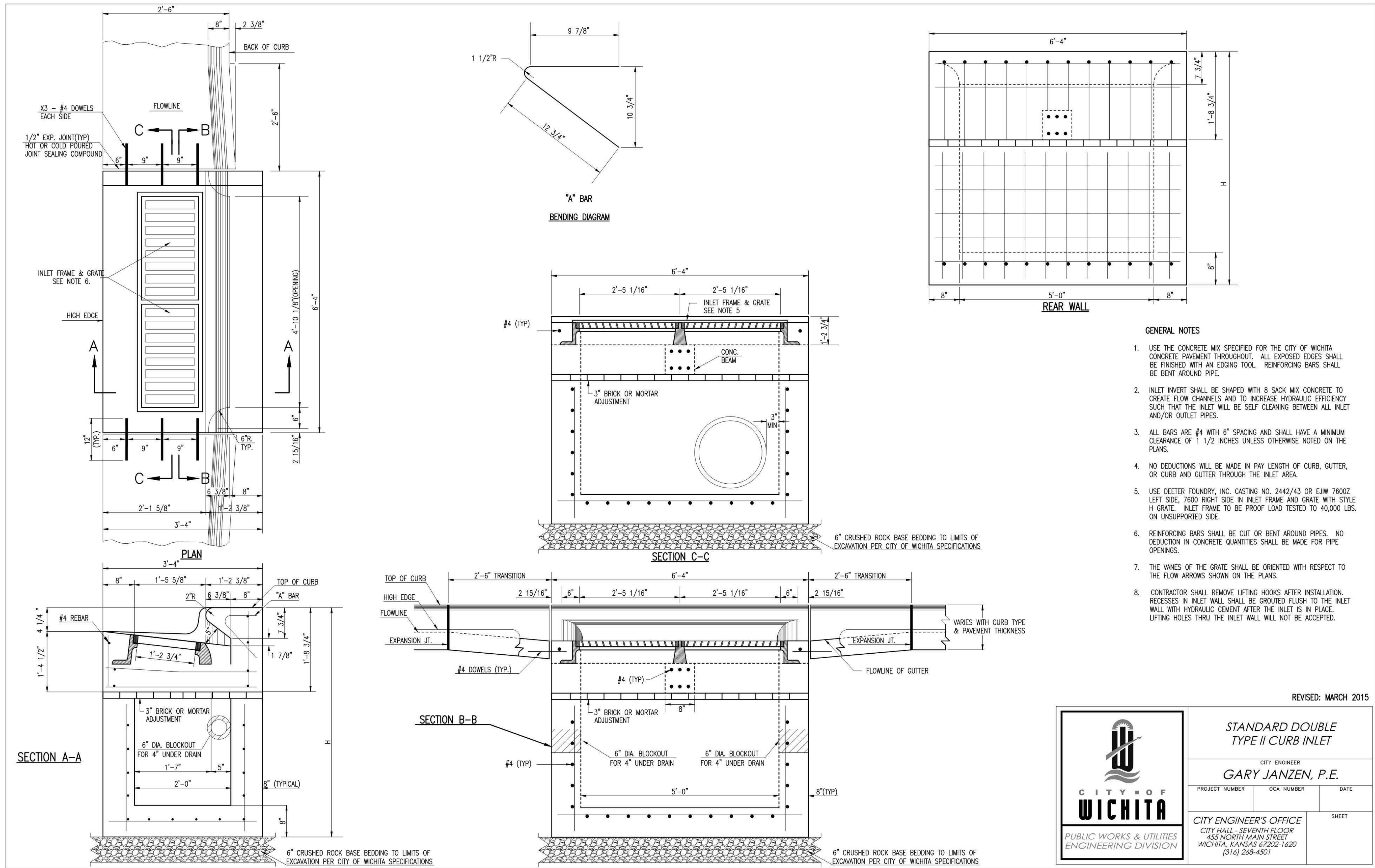
CITY ENGINEER'S OFFICE
CITY HALL - SEVENTH FLOOR
455 NORTH MAIN STREET
WICHITA, KANSAS 67202-1620
(316) 268-4501

PROJECT NUMBER: OCA NUMBER: DATE: SHEET:

5015 NW CANAL STREET, SUITE 100
RIVERSIDE, MISSOURI 64150
816-800-0950
WWW.RIC-CONSULT.COM

| NO. | BY | DATE | REVISION |
|-----|----|----------|-----------------------------------|
| 1 | PC | 11/12/19 | PER CITY COMMENTS |
| 2 | DB | 10/16/19 | UPDATED PER LATEST UTILITY LAYOUT |
| 3 | PC | 7/1/19 | PER CITY COMMENTS |

SW-101



REVISED: MARCH 2015



**STANDARD DOUBLE
TYPE II CURB INLET**

CITY ENGINEER
GARY JANZEN, P.E.

| | | |
|----------------|------------|------|
| PROJECT NUMBER | OCA NUMBER | DATE |
| | | |

CITY ENGINEER'S OFFICE
CITY HALL - SEVENTH FLOOR
455 NORTH MAIN STREET
WICHITA, KANSAS 67202-1620
(316) 268-4501

SHEET

SW-106

Nov 12, 2019, 1:18pm
Z:\RIC Design\2019\19-0133\DWG\19-0133 PPD.dwg