

1-9

MH # 5450-260  
Remove and Replace Manhole Bench & Invert  
Approx depth = 6.5 ft

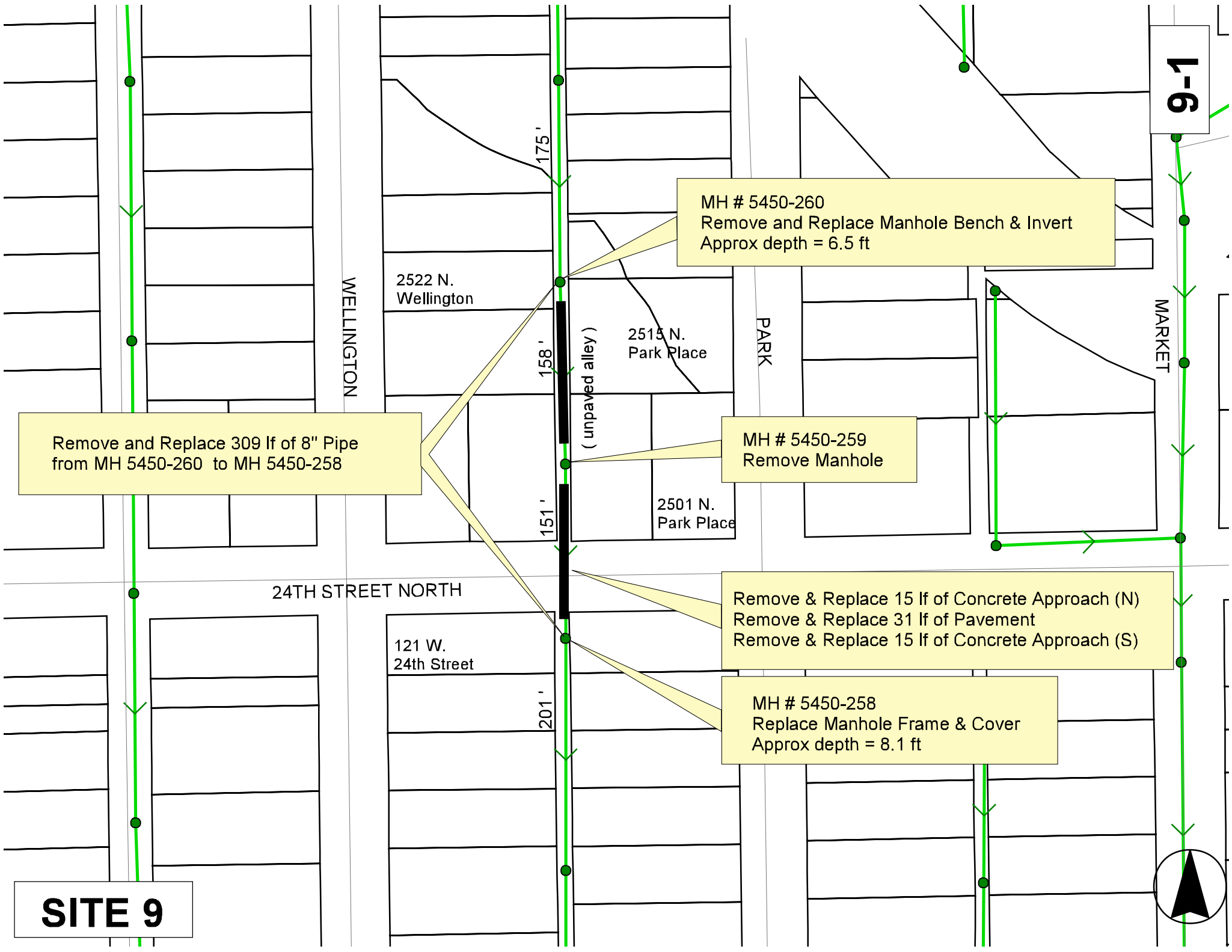
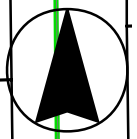
Remove and Replace 309 lf of 8" Pipe  
from MH 5450-260 to MH 5450-258

MH # 5450-259  
Remove Manhole

Remove & Replace 15 lf of Concrete Approach (N)  
Remove & Replace 31 lf of Pavement  
Remove & Replace 15 lf of Concrete Approach (S)

MH # 5450-258  
Replace Manhole Frame & Cover  
Approx depth = 8.1 ft

**SITE 9**



WELLINGTON

2522 N. Wellington

175'

158'

151'

201'

(unpaved alley)

2515 N. Park Place

PARK

2501 N. Park Place

MARKET

24TH STREET NORTH

121 W. 24th Street

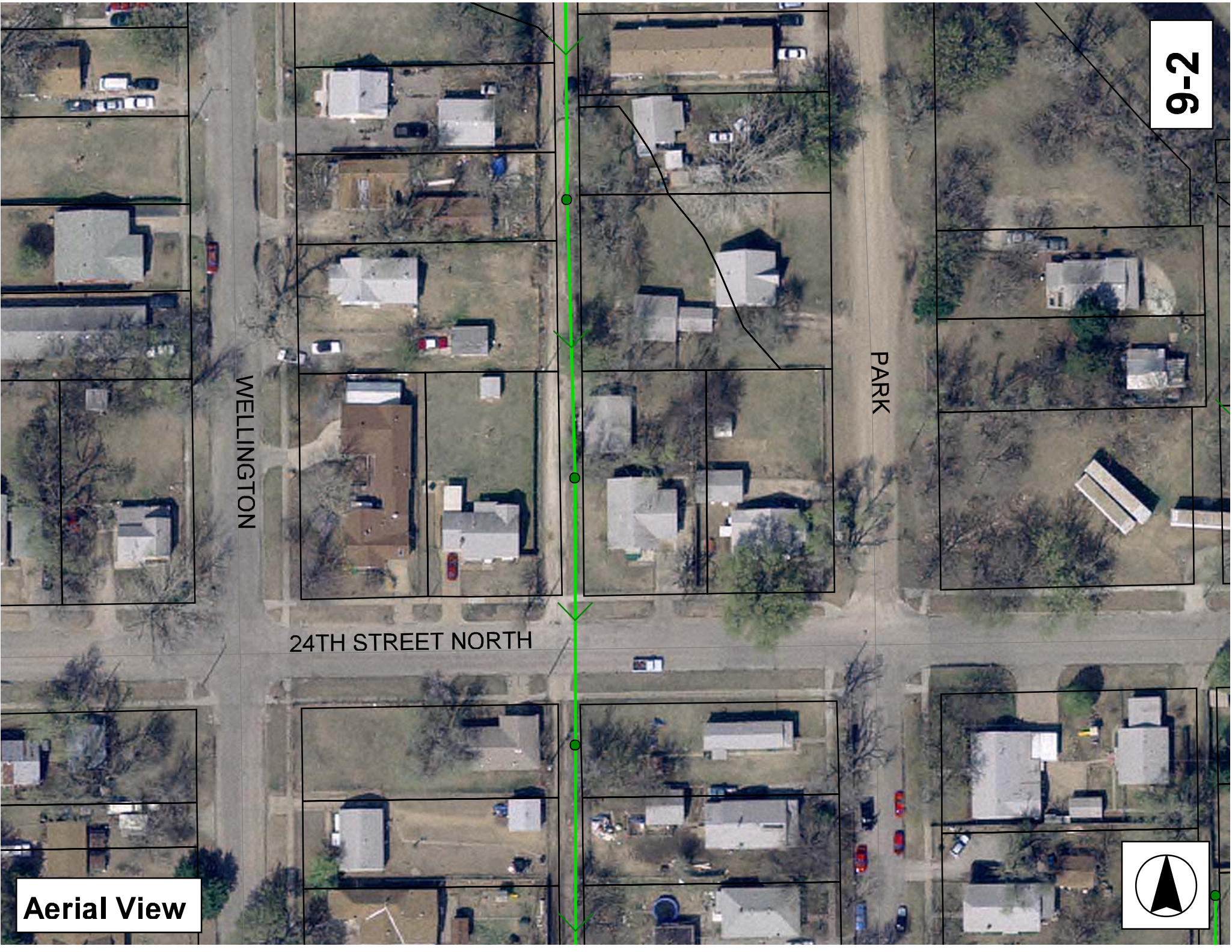
9-2

WELLINGTON

PARK

24TH STREET NORTH

Aerial View



# Television Inspection Master Report

4/17/2007  
1:20 PM

US Structure: 5450-260      2522 N WELLINGTON PL      Date Insp: 3/6/2007      Basin: C04A  
DS Structure: 5450-259      116 W 24TH ST      Dir Televised: Upstream To Downstream

## Pipe Information

Shape: Round      Length Status:      Project No.: D-130  
Dia/Ht Width: 8      0      Material: VCP      Index:  
Length: 158.5      Slope: 0.203      Surface:

## Inspection Information

Crew: 690      Percent Full:      Tape ID: DVD #0256  
Weather: Sunny      Purpose: TV Existing Line      Counter Start:  
Surface Cond: N/A      Flow: Normal Flow      Counter Stop:

Obs. #	VTR Counter Comment	Distance	Location	Description	Rating	Obsrvd (gpm)	Est. (gpm)	Ratings Struct	Clean	Remain (gpm)	
1		0.0	US Manhole	5450-260	1						
2		2.8	Lower Left	Crack-Radial	3		0.004	5	0	0.004	
3		3.5	West	Wye Service	1		0.000	0	0	0.000	
	(not sealed at the main, but possibly dead?)										
4		7.8	Upper Right	Crack-Horizontal	2		0.002	2	0	0.002	
5		10.5	Lower Left	Crack-Horizontal	3		0.004	5	0	0.004	
6		12.7	Joint	Offset	3		0.010	20	0	0.010	
7		15.7	Invert	Crack-Horizontal	3		0.004	5	0	0.004	
8		20.7	Invert	Crack-Horizontal	3		0.004	5	0	0.004	
9		23.1	Upper Left	Crack-Radial	3		0.004	5	0	0.004	
10		23.7	West	Wye Service	1		0.000	0	0	0.000	
	(not sealed at the main, but possibly dead?)										
11		24.9	East	Break-In Conn	3		0.004	2	0	0.004	
	(not sealed at the main, but not sure if active?)										
12		28.2	Lower Left	Broken Pipe	3		0.010	60	0	0.010	
13		31.8	Lower Left	Crack-Horizontal	3		0.004	5	0	0.004	
14		35.7	Invert	Crack-Horizontal	3		0.004	5	0	0.004	
15		42.2	East	Break-In Conn	2		0.002	0	0	0.002	
	2515 N PARK										
16		43.4	Invert	Crack-Horizontal	3		0.004	5	0	0.004	
17		48.9	Lower Left	Crack-Horizontal	3		0.004	5	0	0.004	
18		48.9	West	Wye Service	1		0.000	0	0	0.000	
	SEALED OFF										
19		51.8	Invert	Crack-Horizontal	3		0.004	5	0	0.004	
20		53.5	Lower Left	Broken Pipe	3		0.010	60	0	0.010	
21		59.2	Invert	Crack-Horizontal	3		0.004	5	0	0.004	
22		65.0	Invert	Crack-Horizontal	3		0.004	5	0	0.004	
23		71.0	Invert	Broken Pipe	4		0.030	78	0	0.030	
24		74.4	West	Wye Service	1		0.000	0	0	0.000	
	SEALED OFF										
25		77.3	Lower Left	Crack-Horizontal	3		0.004	5	0	0.004	
26		84.1	Invert	Crack-Horizontal	3		0.004	5	0	0.004	
27		89.3	Lower Left	Broken Pipe	3		0.010	60	0	0.010	
28		95.1	East	Break-In Conn	3		0.004	2	0	0.004	
	NEEDS REPAIR / 2501 N PARK										
29		96.5	Lower Left	Crack-Horizontal	3		0.004	5	0	0.004	

# Television Inspection Master Report

4/17/2007  
1:20 PM

US Structure: 5450-260                      2522 N WELLINGTON PL                      Date Insp: 3/6/2007                      Basin: C04A  
DS Structure: 5450-259                      116 W 24TH ST                      Dir Televised: Upstream To Downstream

30	97.4	East	Break-In Conn	3	0.004	2	0	0.004
NEEDS REPAIR / 108 W 24TH								
31	99.0	Lower Left	Broken Pipe	3	0.010	60	0	0.010
32	99.9	West	Wye Service	1	0.000	0	0	0.000
SEALED OFF								
33	101.0	Invert	Broken Pipe	3	0.010	60	0	0.010
34	101.3	Lower Left	PVC PIPE STARTS					
35	105.4	East	Break-In Conn	1	0.001	0	0	0.001
108 W 24 <sup>TH</sup> / PVC								
36	106.5	Invert	PVC PIPE ENDS					
37	107.5	Invert	Crack-Horizontal	3	0.004	5	0	0.004
38	113.7	Invert	Crack-Horizontal	3	0.004	5	0	0.004
39	119.0	Lower Left	Crack-Horizontal	3	0.004	5	0	0.004
40	125.4	Lower Left	Crack-Horizontal	2	0.002	2	0	0.002
41	132.0	Lower Left	Broken Pipe	3	0.010	60	0	0.010
42	137.8	Lower Left	Crack-Horizontal	3	0.004	5	0	0.004
43	144.7	Lower Left	Crack-Radial	2	0.002	2	0	0.002
44	147.4	Upper Left	Crack-Radial	3	0.004	5	0	0.004
45	149.1	West	Wye Service	1	0.000	0	0	0.000
SEALED OFF								
46	150.4	East	Wye Service	3	0.000	2	0	0.000
ROOTS / 120 W 24TH								
47	152.2	Lower Left	Crack-Horizontal	3	0.004	5	0	0.004
48	154.8	Lower Right	Broken Pipe	4	0.030	78	0	0.030
49	157.4	DS Manhole	5450-259	5	0.000	0	0	0.000

LINE IN VERY POOR CONDITION , LINE NEEDS TO BE REHABED A.S.A.P

# Television Inspection Master Report

4/17/2007  
1:20 PM

US Structure: 5450-259  
DS Structure: 5450-258

116 W 24TH ST  
115 W 24TH ST

Date Insp: 3/7/2007

Basin: C04A

Dir Televised: Upstream To Downstream

## Pipe Information

Shape: Round Length Status: Project No.: D-130  
Dia/Ht Width: 8 Material: VCP Length: 151.5 Slope: 0.198S  
Pipe Sec Length: Comment: 6' MANHOLE SHOT INSTALLED BY SEWER MAINTENANCE IN SOUTH LEAD OF MH 5450-259 TO REPAIR HOLE IN THE BOTTOM OF THE LINE. WORK COMPLETED 03-08-2007 TGC #####

## Inspection Information

Crew: 690 Tape ID: DVD #0256

Obs. #	VTR Counter	Distance	Location	Description	Rating	Obsrvd (gpm)	Est. (gpm)	Ratings Struct	Clean	Remain (gpm)
1		0.0	US Manhole	5450-259	(CO-0 H2S-0 O2-20.6 LEL-0)					
2		0.0	Lower Right	Broken Pipe	5		0.060	100	0	0.060
TILE MISSING IN BOTTOM OF PIPE AND ON BOTH SIDES , NEEDS REPAIR, CAM, WON'T PASS (INTERNAL SLEEVE REPAIR INSTALLED BY SEWER MAINTENANCE TO REPAIR HOLES IN THE BOTTOM OF THE PIPE / SEE COMMENT ABOVE)										

## REVERSE SETUP:

Obs. #	VTR Counter	Distance	Location	Description	Rating	Obsrvd (gpm)	Est. (gpm)	Ratings Struct	Clean	Remain (gpm)
1		0.0	DS Manhole	5450-258 / TV AGAINST THE FLOW						
2		10.6	Joint	Offset	2		0.000	0	0	0.000
3		12.7	East	Wye Service / SEALED	1		0.000	0	0	0.000
4		13.4	Upper Right	Broken Pipe	2		0.008	44	0	0.008
5		15.2	West	Wye Service / SEALED	1		0.000	0	0	0.000
6		38.3	Lower Right	Broken Pipe	2		0.008	44	0	0.008
7		102.9	Upper Right	Broken Pipe	2		0.008	44	0	0.008
8		113.9	West	Break-In Conn	1		0.001	0	0	0.001
116 W 24 <sup>TH</sup> / PACKED WITH ROOTS										
9		118.0	Upper Left	Crack-Horizontal	2		0.002	2	0	0.002
10		120.3	Crown	Broken Pipe	3		0.010	60	0	0.010
11		121.2	East	Break-In Conn	4		0.008	60	0	0.008
NEEDS REPAIR / not sure of address										
12		129.2	Upper Right	Crack-Horizontal	2		0.002	2	0	0.002
13		131.7	Lower Right	Debris	4		0.000	0	25	0.000

### SILT AND MUD CAMERA WON'T PASS

(you can see another west connection ahead, at approx. 135 ft)

## INCOMPLETE TELEVISION OF THE LINE

**9-5**