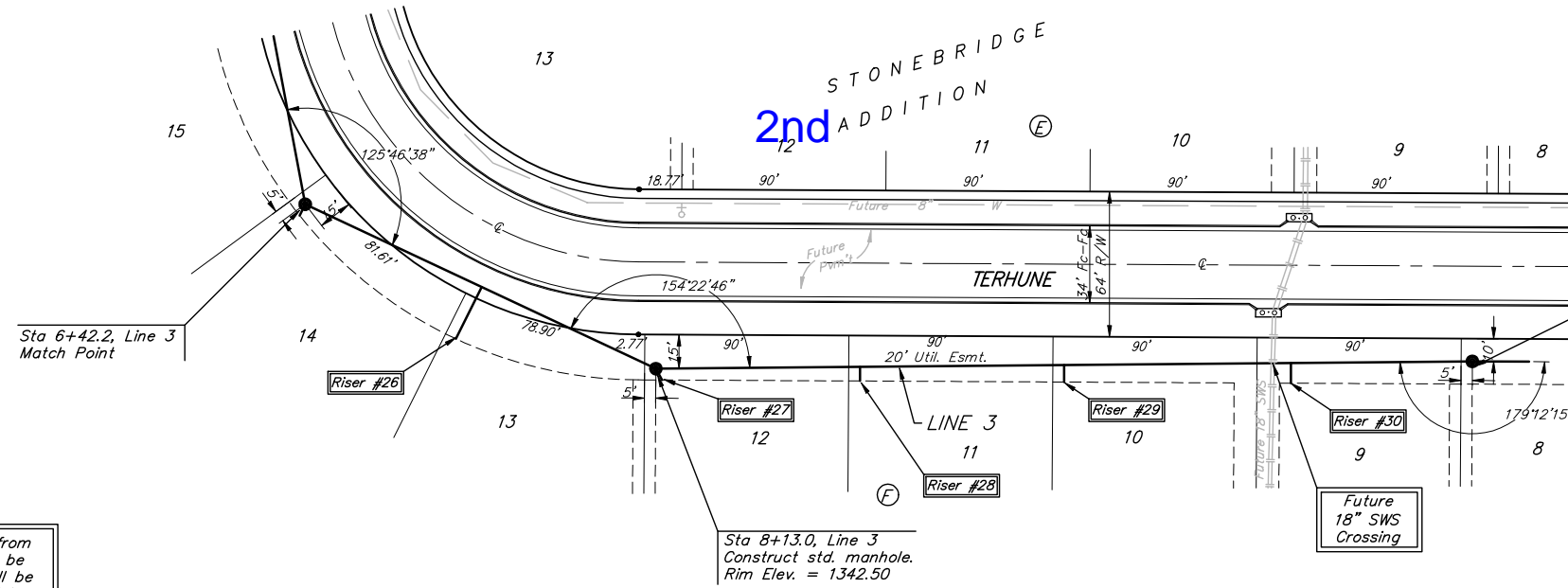


BENCHMARK:
 BM #1: " " CUT, TOP OF CURB, S. SIDE OF SUNDANCE AS DEDICATED IN SAVANNA AT CASTLE ROCK RANCH 7TH ADDITION, 25± W. OF THE WEST LINE OF THE SE1/4 OF SEC. 12, TWP. 27-S, R-2-E.
 ELEV. = 1347.33 NGVD29

BM #2: 60d NAIL IN HIGH LINE POLE, 30' SOUTH OF S1/4 COR., SEC. 12, TWP. 27-S, R-2-E.
 ELEV. = 1348.58 NGVD29 (PER COUNTY RECORD)

Scale: 1" = 40' Horizontal
 1" = 5' Vertical
 • = Iron



Sta 11+73.0, End Line 3
 Construct std. manhole.
 1 - 8" Stub (N)
 Rim Elev. = 1347.70

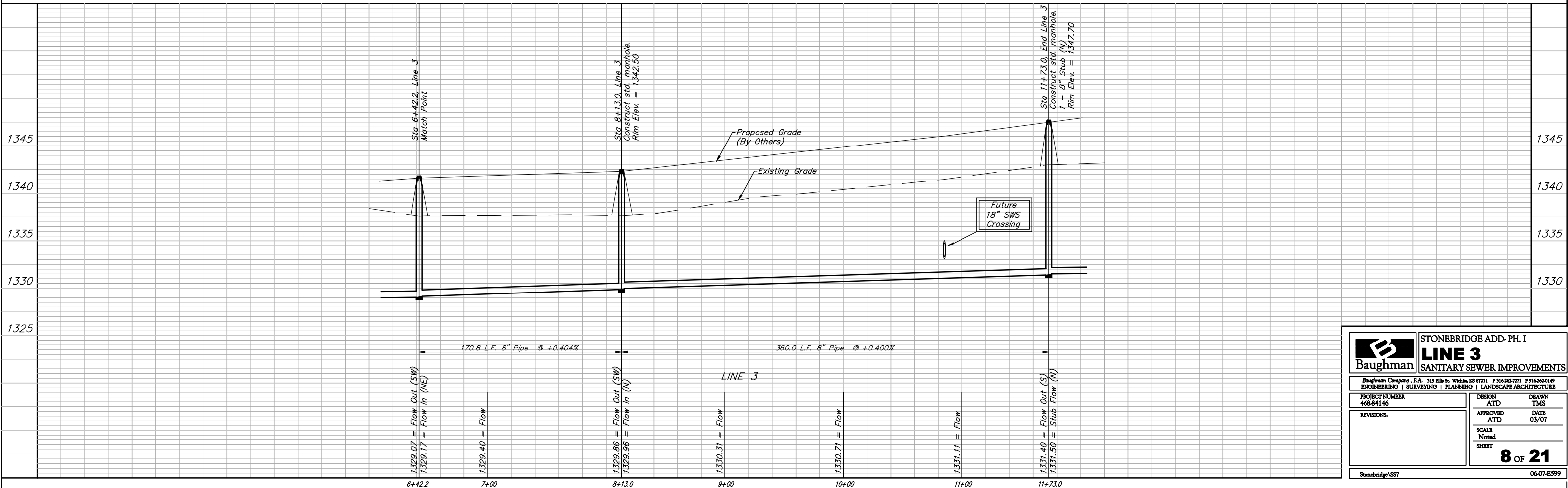
All trench and manhole excavation areas from Sta. 6+42.2 to Sta. 11+73.0, Line 3 shall be backfilled with sand. The sand backfill shall be within two feet of existing grade and shall be water-jetted and vibrated during backfilling. All costs shall be paid for as L.F. "Sand Backfill Jetted and Vibrated".

Sta 8+13.0, Line 3
 Construct std. manhole.
 Rim Elev. = 1342.50

SEWER SERVICE TABLE

NUMBER	TYPE	LOCATION			FOR INFORMATION ONLY		
		LOT NO.	BLOCK NO.	LINE NO.	STATION \ DIRECTION	APPROXIMATE LENGTH 4" PIPE	
26	8" X 4" Tee	13	F	3	7+28/Rt.	8.5'	26.0'
27	4" Stub w/Riser	12	F	3	8+13.0/Rt.	8.5'	6.0'
28	8" X 4" Tee	11	F	3	9+03/Rt.	9.5'	6.0'
29	8" X 4" Tee	10	F	3	9+90/Rt.	10.0'	8.0'
30	4" Stub w/Riser	9	F	3	10+90/Rt.	11.0'	9.0'

NOTE: Vertical Riser Pipe shall be extended to 2' minimum above ground water elevation and 4' maximum below proposed ground elevation.



Baughman STONEBRIDGE ADD-PH. I
LINE 3
 SANITARY SEWER IMPROVEMENTS

Baughman Company, P.A. 315 Ellis St. Wilkes, KS 67111 P 316-262-7771 F 316-262-0149
 ENGINEERING | SURVEYING | PLANNING | LANDSCAPE ARCHITECTURE

PROJECT NUMBER: 468-84146
 DESIGN: ATD
 DRAWN: TMS
 APPROVED: ATD
 DATE: 03/07
 SCALE: Noted
 SHEET: 8 OF 21

Stonebridge\SS7 06-07-E599