

# GENERAL NOTES

- THE CONTRACTOR SHALL COMPLY WITH ALL APPLICABLE SAFETY REGULATIONS. ALL CONSTRUCTION SHALL BE COMPLETED FOLLOWING CURRENT CITY STANDARD SPECIFICATIONS AND SPECIAL PROVISIONS.
- CONTRACTOR WILL BE REQUIRED TO PROVIDE NOTICE TO UTILITY COMPANIES A MINIMUM OF SEVENTY-TWO (72) HOURS PRIOR TO ANY EXCAVATION, AS FOLLOWS:  
KANSAS ONE-CALL 687-2470  
THE CONTRACTOR MUST NOTIFY THE FOLLOWING IN CASE OF AN EMERGENCY:  

TEXTRON AVIATION	
EAST CAMPUS EMERGENCY	1-316-515-6911
EAST CAMPUS NON-EMERGENCY (SECURITY DISPATCH)	1-316-515-5300
AT&T	1-800-246-8464
BLACK HILLS ENERGY	1-800-694-8989
CITY OF WICHITA WATER & SEWER	1-316-219-8921
CITY OF WICHITA STORMWATER	1-316-268-4090
CITY OF WICHITA TRAFFIC	1-316-268-4034
COX COMMUNICATIONS	1-888-249-3530
KANSAS GAS SERVICE	1-888-482-4950
EVERGY	1-800-544-4857
- UTILITY SERVICE LINES, POLES, ETC. ARE TO BE ADJUSTED AS NECESSARY BY OTHERS PRIOR TO CONSTRUCTION UNLESS THE PLANS SPECIFICALLY CALL FOR THEIR ADJUSTMENT BY THE CONTRACTOR OR UNLESS THE PLANS SPECIFICALLY IDENTIFY A UTILITY TO BE ADJUSTED BY ITS OWNER DURING CONSTRUCTION. EXISTING UTILITIES AND THEIR LOCATION, AS SHOWN ON THE PLANS, REPRESENT THE BEST INFORMATION OBTAINABLE FOR DESIGN. THE CONTRACTOR WILL BE REQUIRED TO WORK AROUND EXISTING UTILITIES WITHIN THE RIGHT-OF-WAY WHICH DO NOT CONFLICT WITH PROPOSED CONSTRUCTION.
- RUBBLE FROM THE REMOVAL OF MISCELLANEOUS STRUCTURES AND EXCESS EXCAVATION WHICH IS TO BE WASTED SHALL BE DISPOSED OF ON SITES TO BE PROVIDED BY THE CONTRACTOR. THESE SITES SHALL BE APPROVED BY THE ENGINEER AS TO SUITABILITY, APPEARANCE AND SITE LOCATION. LOCATIONS, IN THE OPINION OF THE ENGINEER, THAT WILL LEAVE AN UNSIGHTLY APPEARANCE WILL NOT BE APPROVED. ALL DISPOSAL SITES MUST BE APPROVED BY THE KANSAS DEPARTMENT OF HEALTH AND ENVIRONMENT. MATERIAL EITHER STOCKPILED OR DISPOSED OF IN A FLOOD PLAIN WILL REQUIRE A KANSAS STATE BOARD OF AGRICULTURE PERMIT. ANY MATERIAL DUMPED IN WATERS OF THE UNITED STATES OR WETLANDS IS SUBJECT TO U.S. CORPS. OF ENGINEERS PERMITTING REGULATIONS. ANY MATERIAL BURIED OR STOCKPILED BEYOND APPROVED CONSTRUCTION LIMITS WILL REQUIRE ADDITIONAL ARCHAEOLOGICAL INVESTIGATIONS UNLESS BURIED IN A PREVIOUSLY APPROVED BORROW LOCATION.
- TREES AND SHRUBS IN PUBLIC RIGHT-OF-WAY WHICH ARE IN DIRECT CONFLICT WITH PROPOSED NEW CONSTRUCTION SHALL BE REMOVED BY THE CONTRACTOR WITH THE CITY ENGINEER'S APPROVAL. TREES AND SHRUBS WHICH ARE NOT IN DIRECT CONFLICT WITH PROPOSED NEW CONSTRUCTION SHALL BE SAVED AND PROTECTED FROM DAMAGE.
- THE CONTRACTOR SHALL GIVE ALL PROPERTY OWNERS AND/OR TENANTS OF DEVELOPED PROPERTY ADJUTING THE CONSTRUCTION OF THIS PROJECT A MINIMUM OF TEN (10) DAYS NOTICE PRIOR TO START OF CONSTRUCTION.
- THE CONTRACTOR SHALL BE RESPONSIBLE FOR PRESERVING PROPERTY IRONS. THE CONTRACTOR WILL BE REQUIRED TO RE-ESTABLISH ANY PROPERTY IRONS WHICH ARE DAMAGED OR DESTROYED BY HIS CONSTRUCTION OPERATIONS. SUCH IRONS SHALL BE RE-ESTABLISHED BY A LICENSED LAND SURVEYOR IN ACCORDANCE WITH STATE LAWS.
- THE ENGINEERING DIVISION SHALL FIELD LOCATE WATER VALVES ONE TIME DURING CONSTRUCTION WHEN REQUESTED BY THE CONTRACTOR. IT SHALL BE THE CONTRACTOR'S RESPONSIBILITY TO PRESERVE SUCH FIELD LOCATIONS DURING THE CONSTRUCTION PROCESS. WATER VALVES, VALVE BOXES OR FIRE HYDRANTS DAMAGED DURING CONSTRUCTION SHALL BE REPAIRED BY CONTRACTOR AT HIS OWN EXPENSE. VALVE BOXES AND WATER METERS WITHIN THE PROJECT LIMITS SHALL BE ADJUSTED TO MATCH FINAL GRADES BY THE CONTRACTOR.
- THE CONTRACTOR SHALL NOTIFY THE INSPECTING ENGINEER AND DAWNITA REINHART AT 316-268-4574 WITH THE CITY OF WICHITA WITH THE ANTICIPATED CONSTRUCTION START DATE AND NOTIFY THEM OF PROJECT COMPLETION. STAKING AND INSPECTION FOR THIS PROJECT WILL BE THE RESPONSIBILITY OF THE CONTRACTOR.
- IF TRAFFIC WILL BE IMPACTED BY CONSTRUCTION, A TRAFFIC CONTROL PLAN MUST BE SUBMITTED AND APPROVED BY THE CITY TRAFFIC ENGINEER, MIKE ARMOUR AT [TRAFFIC@WICHITA.GOV](mailto:TRAFFIC@WICHITA.GOV) BEFORE CONSTRUCTION CAN BEGIN. THE CONTRACTOR SHALL BE RESPONSIBLE FOR ALL TRAFFIC CONTROL MEASURES TO FACILITATE CONSTRUCTION. ALL CONSTRUCTION ZONE MARKINGS AND SIGNAGE SHALL CONFORM TO THE LATEST VERSION OF THE MANUAL ON UNIFORM TRAFFIC CONTROL DEVICES (MUTCD) AS PUBLISHED BY THE US DEPT. OF TRANSPORTATION, FEDERAL HIGHWAY ADMINISTRATION. ALL COSTS ASSOCIATED WITH CONSTRUCTION MARKINGS AND SIGNAGE SHALL BE THE CONTRACTORS RESPONSIBILITY.
- ALL ELEVATIONS SHOWN ARE NAVD 88.
- ALL AREAS DISTURBED DURING CONSTRUCTION THAT WILL NOT BE UNDER PROPOSED PAVEMENT SHALL BE RESTORED TO MATCH EXISTING CONDITIONS.
- ANY SIDEWALK, DRIVE APPROACH, OR STREET PAVEMENT REMOVED TO CONSTRUCT PROJECT MUST HAVE A PAVEMENT CUT PERMIT AND BE REPLACED BY THE CITY CONTRACTOR. PERMITS CAN BE OBTAINED BY CALLING 316-268-4501 OR 316-268-4480.
- CITY MAINTENANCE OF STORM SEWER ENDS AT THE LAST STRUCTURE IN THE EASEMENT OR RIGHT-OF-WAY.
- CONTRACTOR SHALL LIMIT THE EXTENT OF TRENCH OPENINGS OVERNIGHT AND WEEKENDS TO LESS THAN 50 FEET.
- THE INSPECTING FIRM SHALL SUBMIT TO THE CITY STORMWATER MAINTENANCE DIVISION A DIGITAL COPY OF THE CCTV INSPECTION OF THE CONDUITS AND STRUCTURES FOLLOWING CONSTRUCTION. THE DIGITAL FILE FORMATION SHALL BE COMPATIBLE WITH THE CITY INPUT TEMPLATE. A COPY OF THE TEMPLATE IS AVAILABLE UPON REQUEST AT 316-268-4090.
- THE CONTRACTOR SHALL PROTECT FROM DAMAGE AND SUPPORT EXISTING UTILITIES THROUGH CONSTRUCTION AS APPROVED BY THE UTILITY OWNER AND THE ENGINEER AT THE CONTRACTORS EXPENSE.
- A PORTION OF EXCESS EXCAVATED MATERIAL SHALL BE MOUNDING AROUND MANHOLES WHICH EXTEND MORE THAN ONE (1) FOOT ABOVE THE EXISTING GROUND. SUCH MOUND SHALL BE CONSTRUCTED WITH NEW DEVELOPMENT AS A SIX (6) FOOT DIAMETER FLAT TOP WITH 4 TO 1 SIDE SLOPES DOWN TO THE ORIGINAL GROUND. THE ELEVATION OF THE FLAT TOP OF THE MOUND SHALL BE 0.4 FOOT BELOW THE TOP OF THE MANHOLE.
- GEOTECHNICAL REPORT AVAILABLE UPON REQUEST.

# STORM SEWER IMPROVEMENTS to serve TEXTRON AVIATION EAST CAMPUS WEBB ROAD ENTRY CITY OF WICHITA, KANSAS

△ Gary Janzen, P.E. City Engineer  
Project Number  
2022-000772 PPD (56030970)

**AS BUILTS**

<b>Contractor:</b> McCullough Excavation  4/3/2023	<b>Project Inspector:</b> Larry Gann <b>KEMILLER</b> ENGINEERING PA 117 E. Lewis, Wichita, KS 67202 (316)264-0242
--	---

## PPD SHEET INDEX

SHEET NO. CU001	PPD TITLE SHEET
SHEET NO. CU002	PPD KEY MAP
SHEET NO. CS111	SITE GRADING PLAN AREA A
SHEET NO. CS112	SITE GRADING PLAN AREA B
SHEET NO. CS113	SITE GRADING PLAN AREA C
SHEET NO. CG101	EROSION CONTROL PLAN
SHEET NO. CP602	PAVEMENT UNDERDRAIN DETAILS
SHEET NO. CP603	MANHOLE-INLET FRAME & COVER DETAILS
SHEET NO. CU201	SWS PLAN & PROFILE 2 & 2A
SHEET NO. CU202	SWS PLAN & PROFILE 3, 3A & 3B
SHEET NO. CU203	SWS PLAN & PROFILE 4 & 5
SHEET NO. CU401	ERU PLAN
SHEET NO. CU501	TYPE 1 CURB INLET
SHEET NO. CU502	STANDARD DOUBLE TYPE II CURB INLET
SHEET NO. CU503	STORM SEWER MANHOLE DETAILS
SHEET NO. CU504	STORM SEWER MANHOLE FRAME & COVER
SHEET NO. CU505	BEDDING AND BACKFILL DETAILS
SHEET NO. CG501-CG505	EROSION CONTROL BMP DETAILS

(available on the City's website)  
<https://www.wichita.gov/PWU/Pages/Regulations.aspx>

## KEY MAP

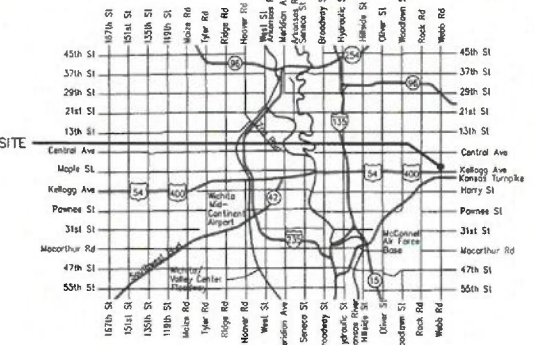
SEE SHEET CU002

## HORIZONTAL CONTROL

SEE SHEET CU002

## BENCHMARKS

SEE SHEET CU002



## Vicinity Map

**Stormwater Certification:**

New Development or Redevelopment (Circle One)

Stormwater Permit # \_\_\_\_\_

NOI State Permit # S-AR94-1794

NOI Federal Permit # KSR120917

These construction plans were prepared in accordance with the current Stormwater management Regulations as set forth in the City of Wichita's Stormwater Management Ordinance 16.32 and the policies/guidelines presented in the Wichita/Sedgwick County Stormwater Manual.

Site Area (Acres) = 12.75 acres

Disturbed Area (Acres) = 3.75 acres

Water Quality Treatment: Reduction in Impervious

Downstream Channel Protection: N/A

Detention: N/A

The BMP used for this development is N/A

APPROVED AS NOTED  
BY WICHITA PUBLIC WORKS ENGINEERING  
AND STORMWATER DIVISION

Engineering SHAWN MELLIES - NOVEMBER 2, 2022

Stormwater JOSEPH HICKLE - NOVEMBER 2, 2022

NOTE TO CONTRACTORS

Inspection and testing for this project is to be provided by a Licensed Consulting Engineering Firm under contract with the Owner/Developer. Said inspection to be in accordance with the City of Wichita standard construction engineering practices and certified by a Licensed Professional Engineer in the state of Kansas. No work shall be performed the Contractor without such inspection nor shall any work be commenced without written authorization by City Engineering. All Construction and Materials shall comply with the current City of Wichita Specifications and Standards and Special Provisions. (on file and available at Wichita.gov).

An approved copy of these plans signed by City staff are required on-site.

NOVEMBER 2022



△	Date	Description
1	11/01/2022	ASI - 001
2	11/10/2022	ASI - 002

**TEXTRON AVIATION**  
EAST CAMPUS  
WEBB ROAD ENTRY  
IMPROVEMENTS  
WICHITA, KS

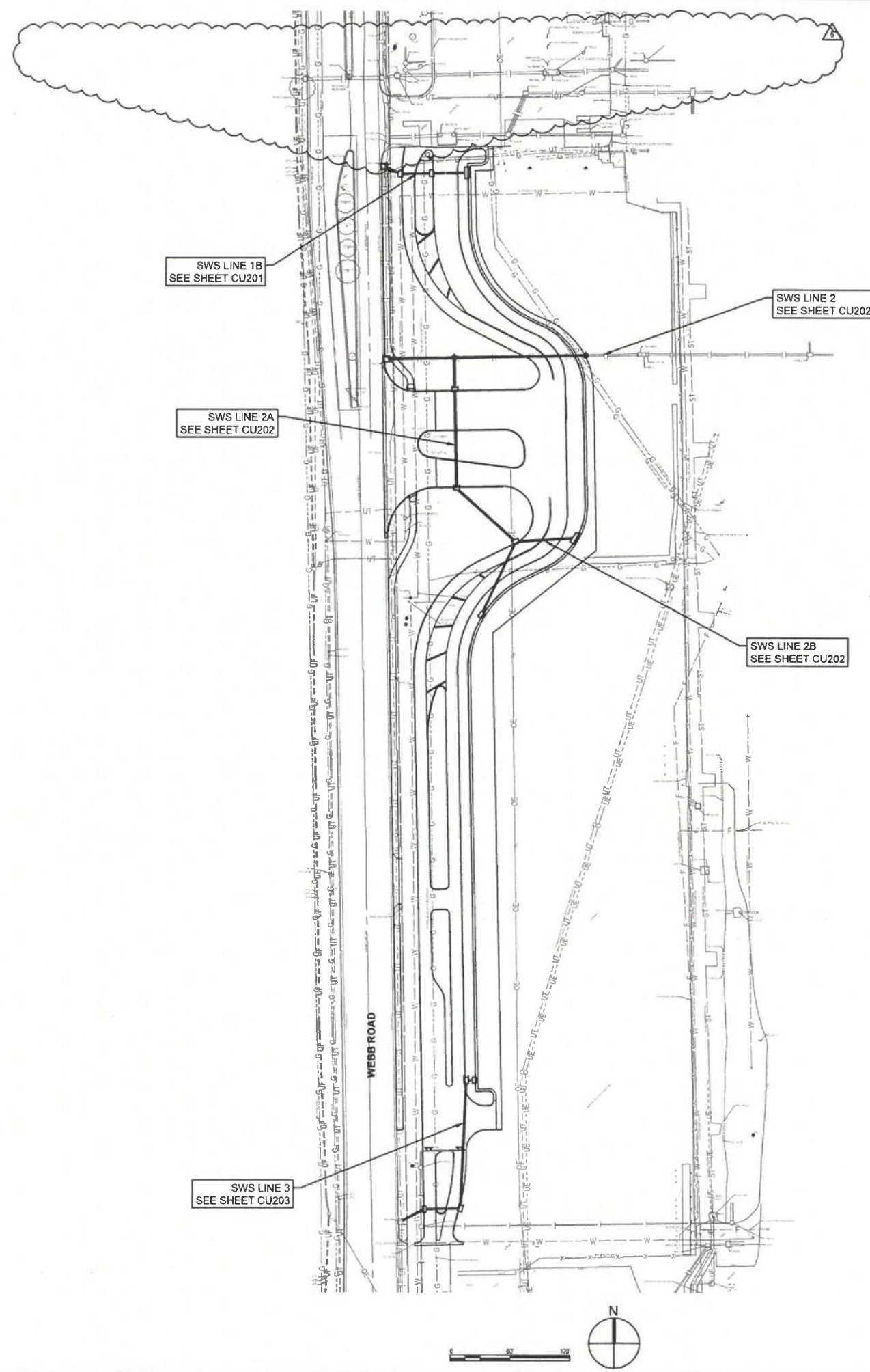
JOB NUMBER:	228003-044
DATE:	08/17/2022
DRAWN:	NCL
CHECKED:	JAG

PPD COVER SHEET

**CU001**  
EAST CAMPUS

Sheet 11 - 10-2022 8:42:29 AM by DISTRIBLUNISEZ  
C:\Users\jag\OneDrive\Documents\228003-044\PEEC\228003-044-11001

Saved: 01-19-2023 7:45:05 AM by ANDREW SHERIDAN  
 Plot Scale: 1"=25.00' 01-19-2023 7:43:41 AM by ANDREW SHERIDAN  
 US Wichita - Final (2022) 228003-044 (PEC) Drawings 228003-044-0002



**CONTROL SUMMARY**  
 HORIZONTAL DATUM/COORDINATE SYSTEM: NAD 83 KANSAS SOUTH ZONE  
 PROJECT COORDINATE SYSTEM: (GRID) ON DESCRIBED COORDINATE SYSTEM  
 VERTICAL DATUM: NAVD 88  
 SCALE POINT: NORTHING: 0  
 EASTING: 0  
 COMBINED ADJUSTMENT FACTOR (CAF): GROUND TO GRID=0.99988295  
 GRID TO GROUND=1/0.99988295

DISTANCE UNITS: US SURVEY FEET  
 COORDINATE SYSTEM ORIGIN: PEC PROJECT #  
 REMARKS: 228003-014  
 VERTICAL DATUM ORIGIN: PEC PROJECT #  
 REMARKS: 228003-014

- HORIZONTAL CONTROL POINTS**
- CP-101  
 N: 1,688,046.6781 E: 1,680,953.8984  
 CHISELED + ON MANHOLE PAD NORTH SIDE OF WEBB ROAD MAIN ENTRANCE EAST SIDE WEBB ROAD  
 1. 17.4' W TO EAST CURB WEBB ROAD  
 2. 31.67' SW TO NORTHEAST CORNER AREA INLET  
 3. 2.84' SW TO CENTER MANHOLE
- CP-102  
 N: 1,687,441.7725 E: 1,680,952.9368  
 #4 BAR WITH PEC CP CAP IN GRASS EAST SIDE WEBB ROAD  
 1. 6.17' W TO EAST CURB WEBB ROAD  
 2. 81.25' NNE TO CHISELED SQUARE ON EAST SIDE MANHOLE PAD  
 3. 118.5' E TO MAG NAIL IN SOUTH FACE LIGHT POLE
- CP-103  
 N: 1,686,815.9874 E: 1,681,006.4280  
 #4 BAR W/PEC CP CAP SOUTH SIDE NORTH ENTRANCE PLANT 3  
 1. 9.67' WNW TO TO CHISELED SQUARE  
 2. 25' SSW TO TOP CENTER FIRE HYDRANT "BFH 018"  
 3. 4' N TO SOUTH EDGE CONCRETE DRIVE
- CP-104  
 N: 1,687,638.7254 E: 1,682,559.0478  
 MAG NAIL IN ASPHALT EAST OF ELECTRIC DUCT BANK EAST OF TAXIWAY  
 1. 4.44 W TO CHISELED SQUARE IN ELECTRIC DUCT BANK "RED CONCRETE"  
 2. 30.47 SW TO SIGN "NO DUMPING OR STORAGE"  
 3. 88.37 ESE TO WEST END SIGN "WARNING AIRCRAFT TAXIWAY"
- CP-105  
 N: 1,687,526.8456 E: 1,682,142.5539  
 MAG NAIL SW CORNER PAVED AREA SOUTHEAST OF BLDG 96  
 1. 12.1 SW TO CENTER OF ELECTRIC MH  
 2. 114.1 NNW TO CHISELED SQUARE SE CORNER RETAINING WALL  
 3. 76.62 WNW TO SOUTHEAST CORNER BLDG 96
- CP-106  
 N: 1,686,991.4139 E: 1,682,000.2159  
 #4 BAR W/PEC CP CAP IN GRASS NE OF PLANT 3 BLDG.  
 1. 59.33 S TO NW CORNER CONCRETE PAD FOR ELECTRIC BOX #W012G90776  
 2. 97.05 SSW TO CHISELED SQUARE NW CORNER PAD ELECTRIC BOX #W12F36099  
 3. 81.93 WNW TO SE CORNER PAD FOR TRANSFORMER #TS748397

- BENCH MARKS**
- BM-201  
 ELEV: 1,365.01 (NAVD 88)  
 CHISELED SQUARE SOUTHWEST CORNER INLET SOUTH SIDE WEBB ROAD MAIN ENTRANCE EAST SIDE WEBB ROAD.
- BM-20  
 ELEV: 1,371.74 (NAVD 88)  
 CHISELED SQUARE EAST SIDE MANHOLE ON CONCRETE PAD +/- 450' SOUTH OF WEBB ROAD MAIN ENTRANCE IN PARKING LOT
- BM-203  
 ELEV: 1,369.65 (NAVD 88)  
 CHISELED SQUARE SOUTH CURB NORTH END PLANT 3 +/- 25' SOUTH OF FIRE HYDRANT "BFH 018"
- BM-204  
 ELEV: 1,381.57 (NAVD 88)  
 CHISELED SQUARE CENTER OF CONCRETE ELECTRIC DUCT BANK "RED CONCRETE" NORTH OF SOUTH EDGE OF PAVEMENT
- BM-205  
 ELEV: 1,385.66 (NAVD 88)  
 CHISELED SQUARE SE CORNER RETAINING WALL EAST SIDE BLDG 96
- BM-206  
 ELEV: 1,377.49 (NAVD 88)  
 CHISELED SQUARE NW CORNER ELECTRIC BOX #W12F36099 NE OF PLANT 3 BLDG

W&CO REVIEWER



#	Date	Description
1	10/31/2022	ASI - 001
6	01/17/2023	ASI - 006

CITY OF WICHITA PROJECT NUMBER  
 2022-000772 PPD (56030970)

**TEXTRON AVIATION**  
 EAST CAMPUS  
 WEBB ROAD ENTRY  
 IMPROVEMENTS  
 WICHITA, KS

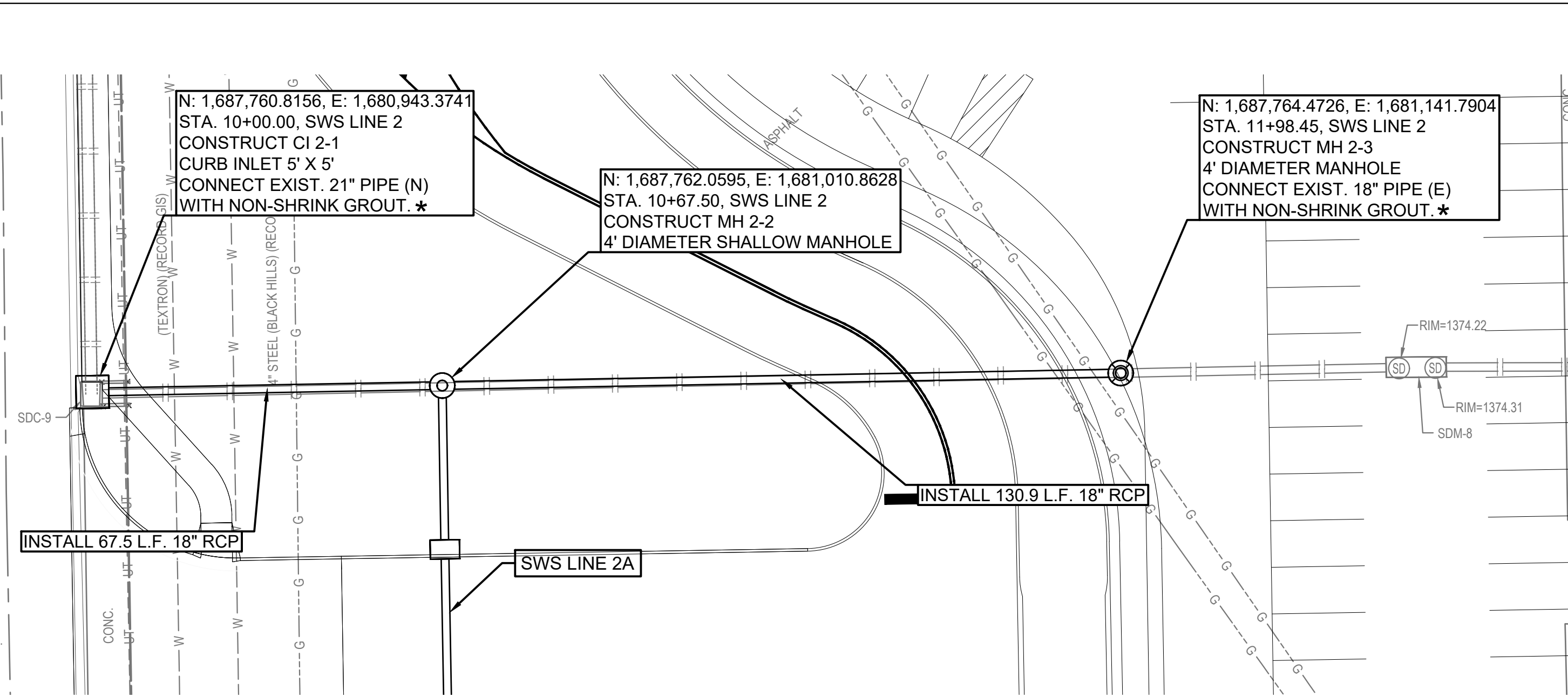
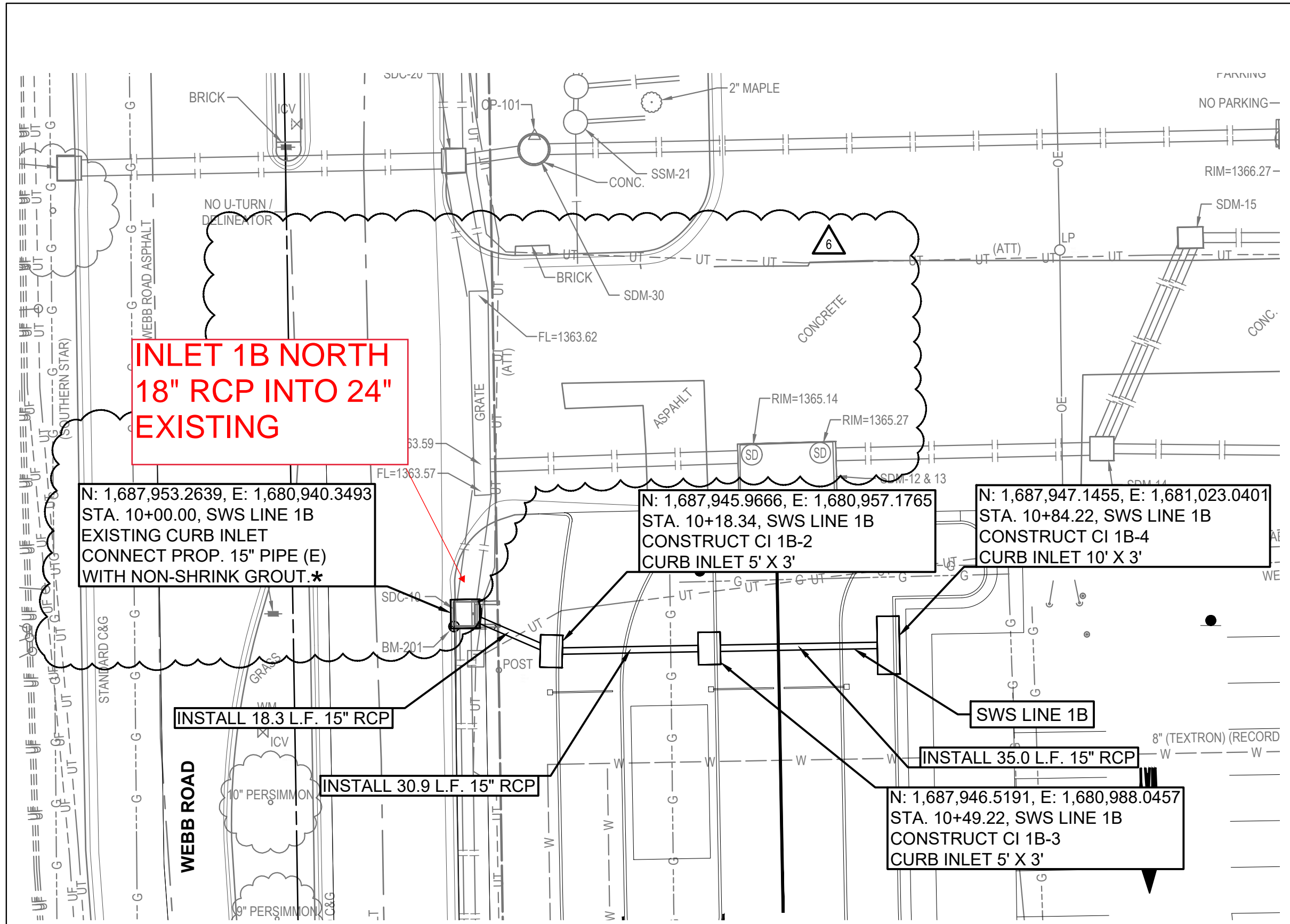
JOB NUMBER:	228003-044
DATE:	08/17/2022
DRAWN:	NCL
CHECKED:	JAG

PPD KEY MAP

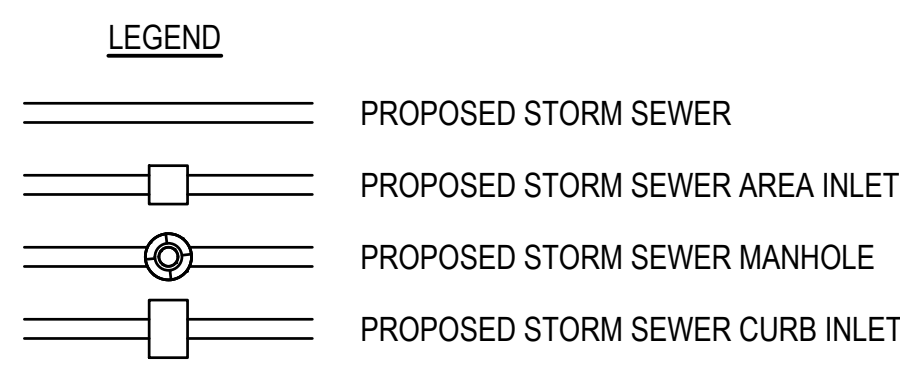
CU002

EAST CAMPUS

Saved: 01-18-2023 1:20:22 PM by ANDREW SHERIDAN  
 Plot Scale: 1" = 40'-0" (Horizontal) 1" = 10'-0" (Vertical)  
 U:\Projects\2022\228003\041\_PEC Drawings\228003-04-0101.dwg

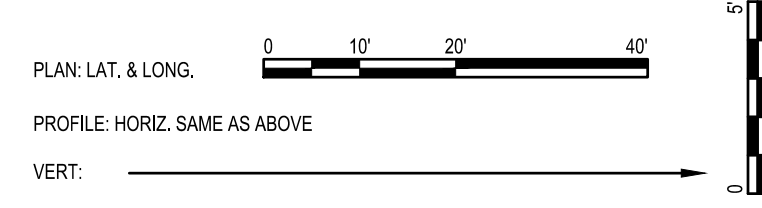
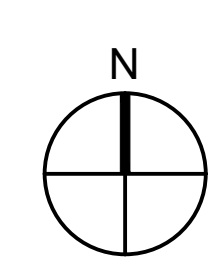


★ CONTRACTOR SHALL VERIFY THE HORIZONTAL AND VERTICAL LOCATION OF THE EXISTING STORM SEWER STRUCTURES AND PIPES PRIOR TO CONSTRUCTION, AND REPORT FINDINGS TO THE ENGINEER.



- NOTES:**
- SEE SHEET CD101-103 FOR EXISTING STORM SEWER DEMOLITION.

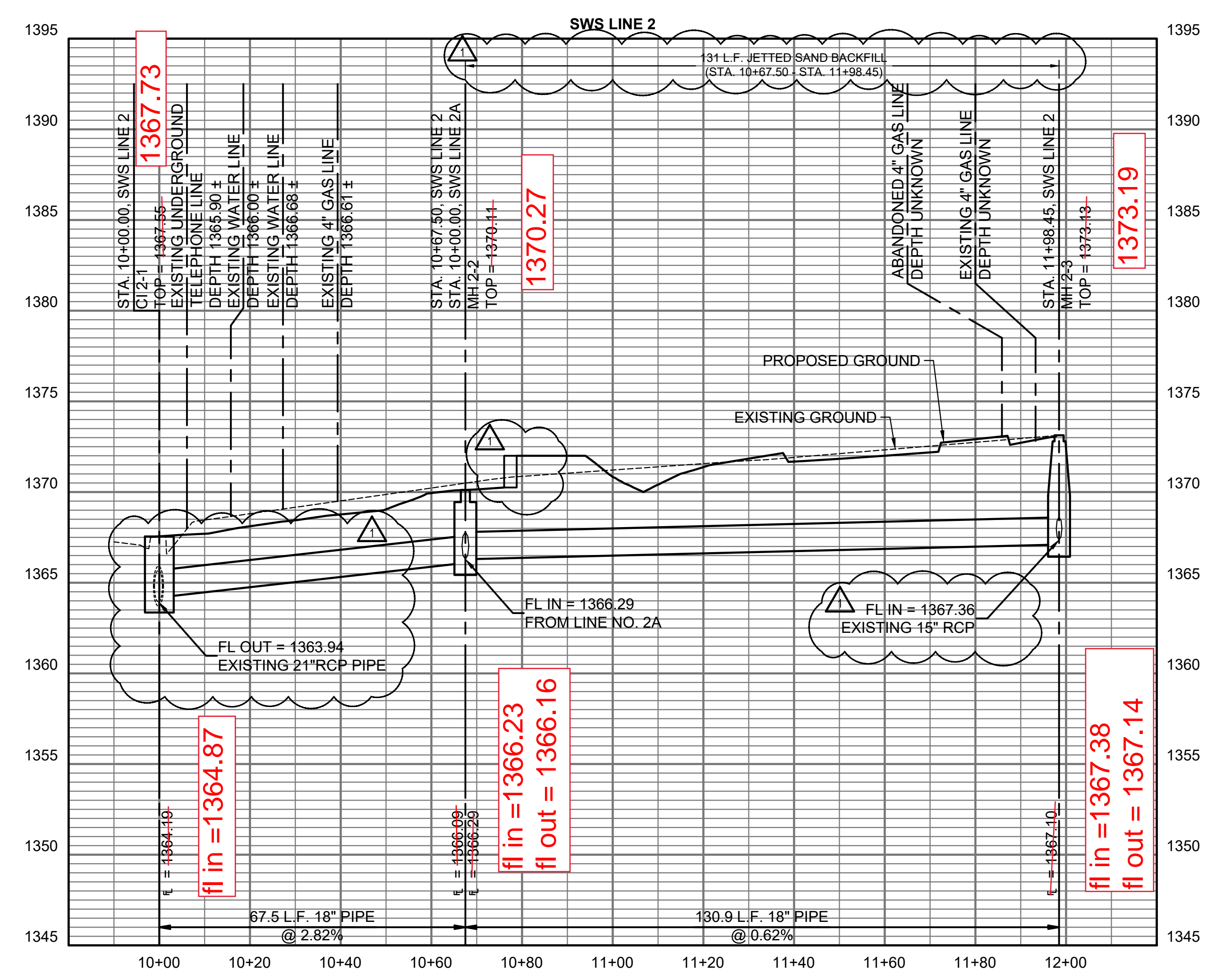
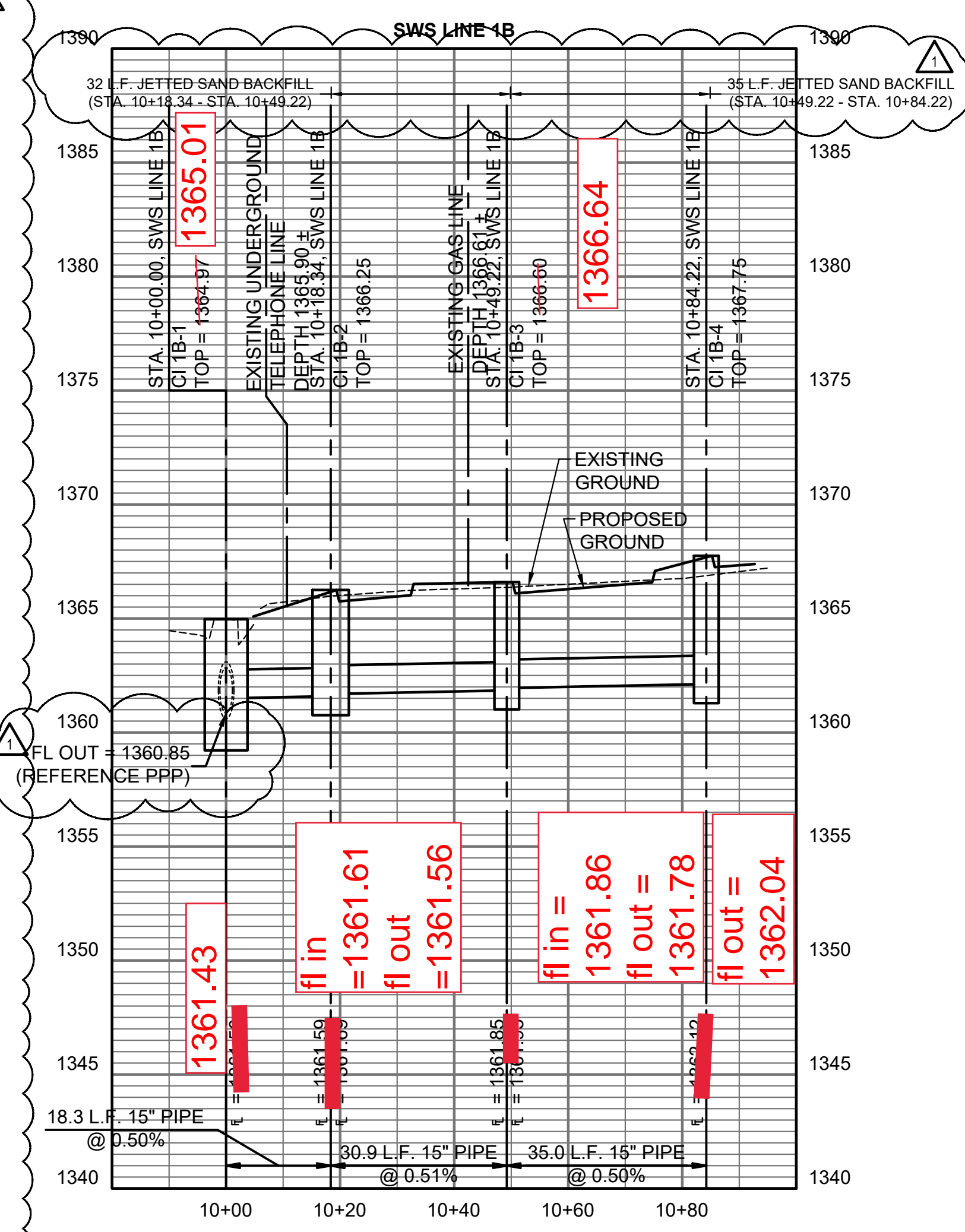
MABCD REVIEWER:



**AS BUILTS**

**KEMILLER**  
 ENGINEERING PA

117 E. Lewis,  
 Wichita, KS 67202 (316)264-0242



CITY OF WICHITA PROJECT NUMBER  
 2022-000772 PPD (56030970)

**TEXTRON AVIATION**  
 EAST CAMPUS  
 WEBB ROAD ENTRY  
 IMPROVEMENTS  
 WICHITA, KS

JOB NUMBER: 228003-044  
 DATE: 08/17/2022  
 DRAWN: XXX  
 CHECKED: XXX

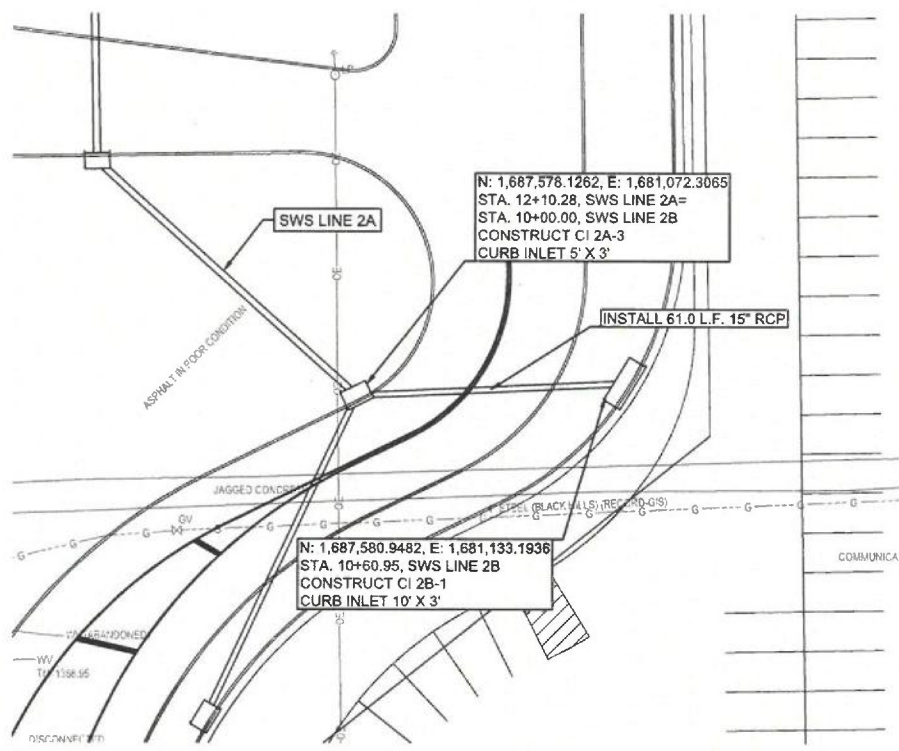
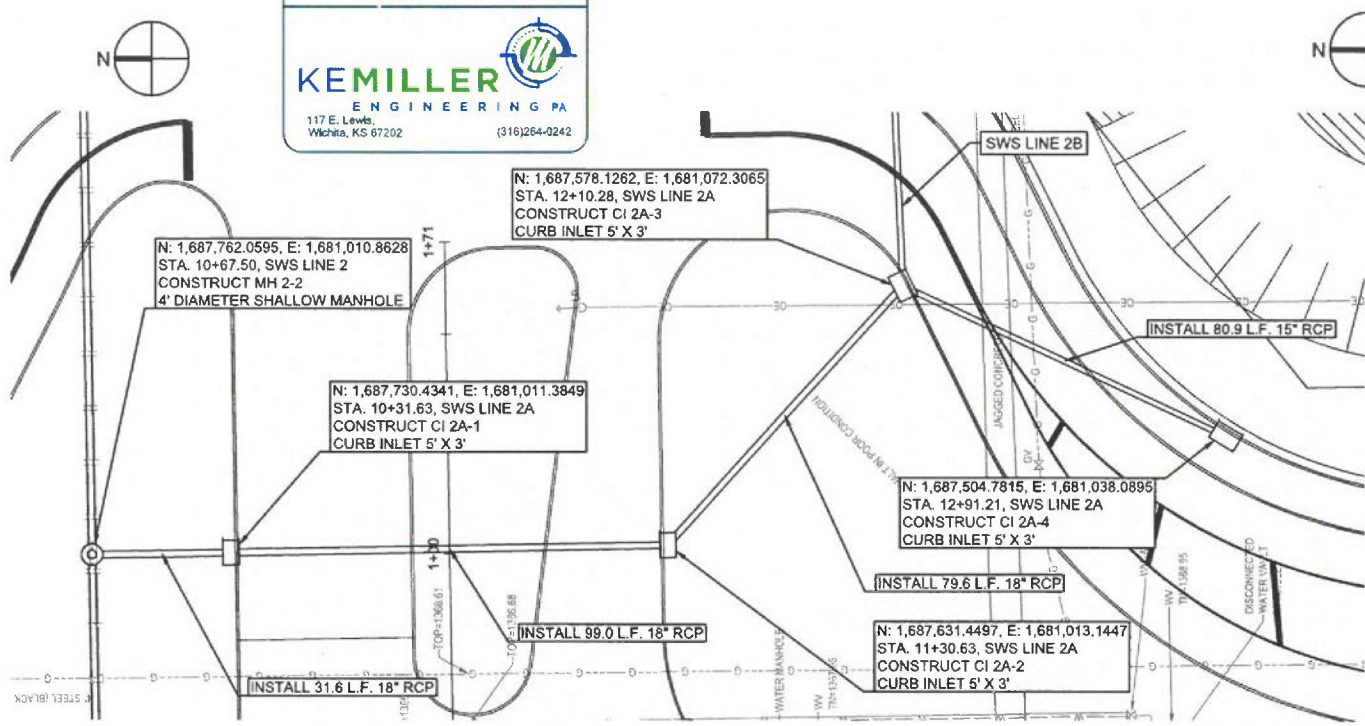
PLAN & PROFILE LINE  
 1A, 1B & 2

**CU201**  
 EAST CAMPUS

**PEC**  
 PROFESSIONAL ENGINEERING CONSULTANTS, P.A.  
 303 SOUTH TOPEKA WICHITA, KS 67202  
 316-262-2691 www.pec1.com



**GLMVArchitecture**  
 Wichita, KS 67202 • Kansas City, MO 64108 • Houston, TX 77019 • www.glmva.com



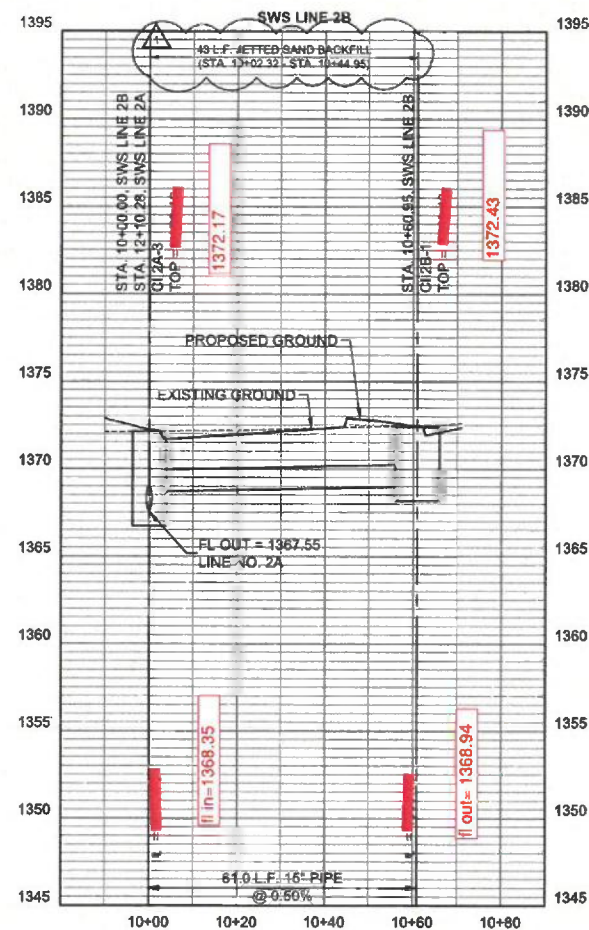
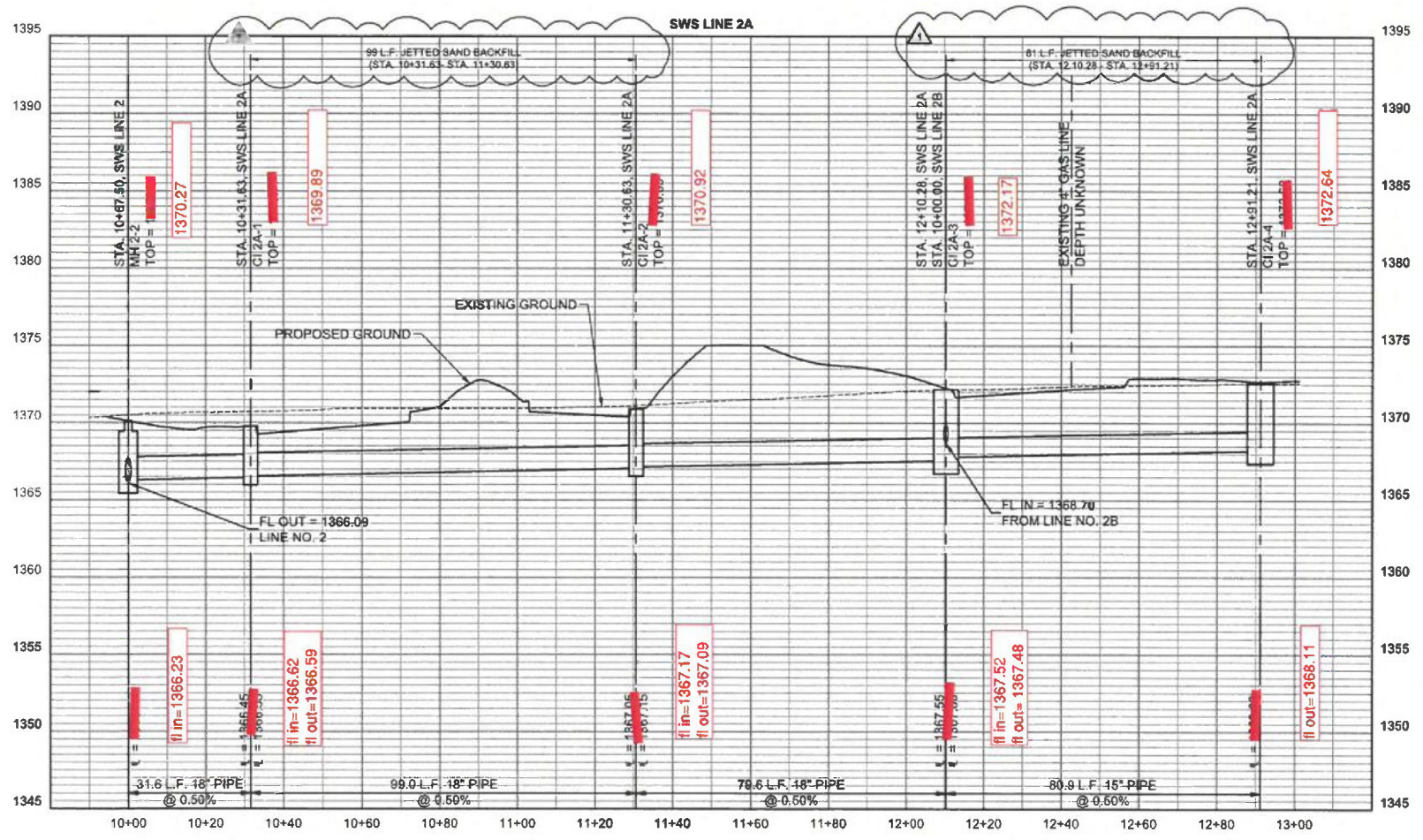
PLAN LAT & LONG  
 PROFILE: HORIZ. SAME AS ABOVE  
 VERT: [Scale]

**LEGEND**

- PROPOSED STORM SEWER
- PROPOSED STORM SEWER AREA INLET
- PROPOSED STORM SEWER MANHOLE
- PROPOSED STORM SEWER CURB INLET

**NOTES:**

- SEE SHEET CD101-103 FOR EXISTING STORM SEWER DEMOLITION.



Drawn 10-31-2022 10:30:55 AM by CHMCL/SWNET  
 Plot Date 11-11-2022 8:41 AM by JAG  
 C:\wchita\2022\22003\CD101\CD101.dwg (316)264-0242

CITY OF WICHITA PROJECT NUMBER  
 2022-000772 PPD (56030970)

Date	Description
10/31/2022	ASI - 001

**TEXTRON AVIATION**  
 EAST CAMPUS  
 WEBB ROAD ENTRY  
 IMPROVEMENTS  
 WICHITA, KS

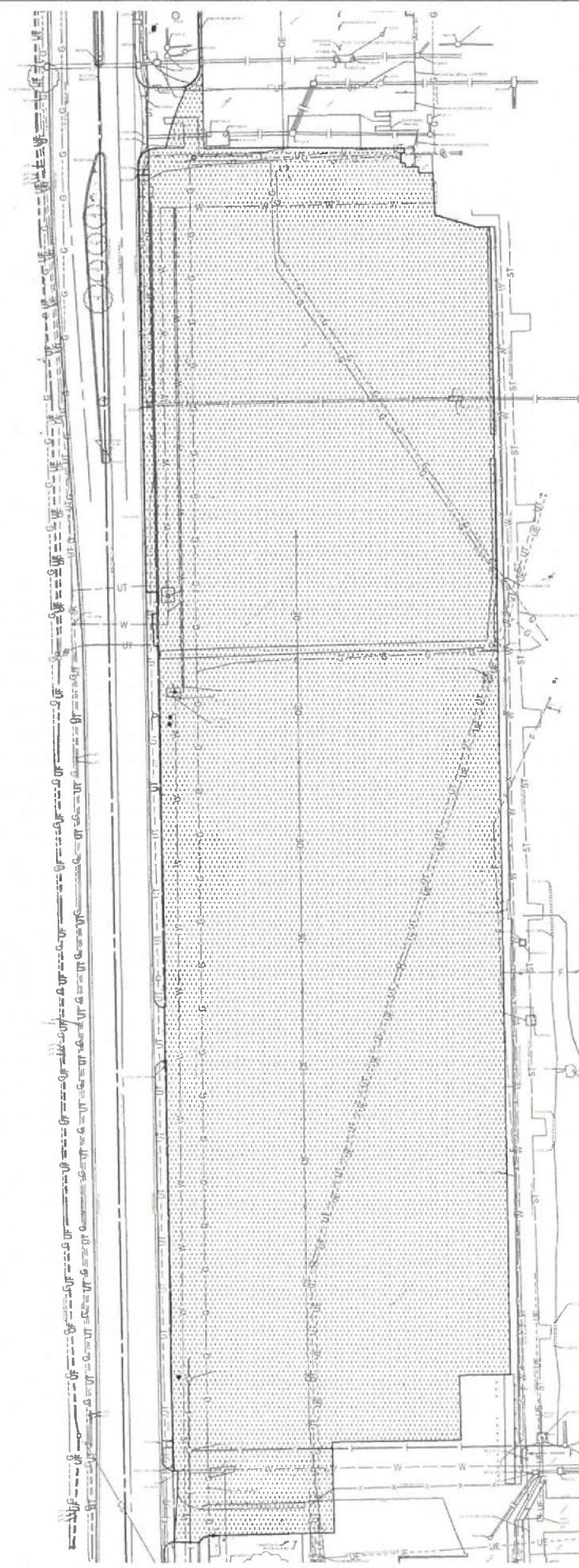
JOB NUMBER: 228003-044  
 DATE: 08/17/2022  
 DRAWN: NCL  
 CHECKED: JAG

**PEEC**  
 PROFESSIONAL ENGINEERING CONSULTANTS, P.A.  
 303 SOUTH TOPEKA WICHITA, KS 67202  
 316-262-2691 www.pec.com

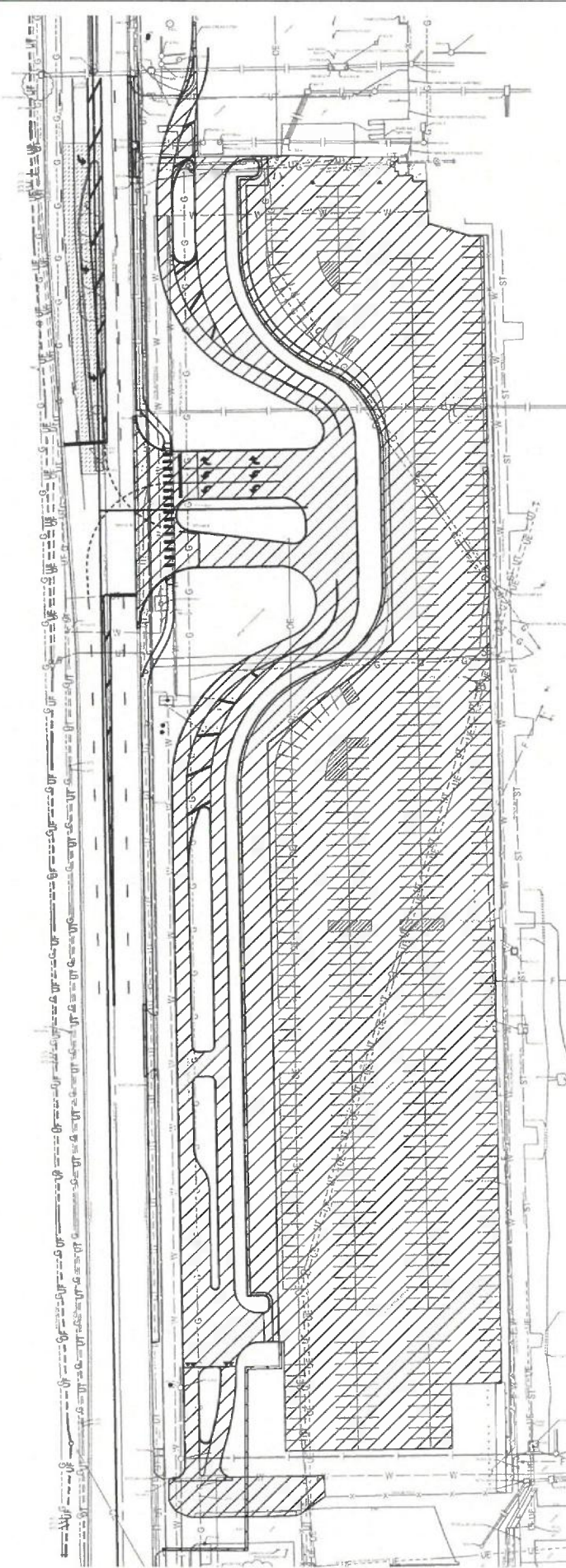
**GLMV Architecture**  
 24136  
 11/11/2022  
 KANSAS  
 PROFESSIONAL ENGINEER



Saved 10-31-2022 10:43:44 AM by CHANCE SWINEY  
 Plot Scale 1:1 11-10-2022 8:47:37 AM by JAG  
 D:\Wichita - Road\2022\228003\044\VEIC Drawings\228003-04-CU401



EXISTING



PROPOSED



MASCO REVIEWER

LEGEND

- EXISTING IMPERVIOUS AREA
- PROPOSED IMPERVIOUS AREA

EXISTING IMPERVIOUS AREA = 307,623 S.F. (7.06 AC)  
 PROPOSED IMPERVIOUS AREA = 243,271 S.F. (5.58 AC)

CITY OF WICHITA PROJECT NUMBER  
 2022-000772 PPD (56030970)

JOB NUMBER: 228003-044  
 DATE: 08/17/2022  
 DRAWN: NCL  
 CHECKED: JAG

ERU PLAN

CU401  
 EAST CAMPUS

**TEXTRON AVIATION**  
 EAST CAMPUS  
 WEBB ROAD ENTRY  
 IMPROVEMENTS  
 WICHITA, KS

▲	Date	Description
1	10/31/2022	ASI - 001

