

GENERAL NOTES:

- The Contractor shall comply with all applicable safety regulations. All construction shall be completed following current City Standard Specifications and Special Provisions.
- Contractor will be required to provide notice to utility companies a minimum of seventy-two (72) hours prior to any excavation, as follows:
 Kansas One-Call 687-2470
 The Contractor must notify the following in case of an emergency:
 AT&T 1-800-246-8464
 Black Hills Energy 1-800-694-8989
 City of Wichita Water & Sewer 1-316-219-8921
 City of Wichita Stormwater 1-316-268-4090
 City of Wichita Traffic 1-316-268-4034
 Cox Communications 1-888-249-3530
 Kansas Gas Service 1-888-482-4950
 Eergy 1-800-544-4857
- Utility service lines, poles, etc. are to be adjusted as necessary by others prior to construction unless the plans specifically call for their adjustment by the Contractor or unless the plans specifically identify a utility to be adjusted by its owner during construction. Existing utilities and their location, as shown on the plans, represent the best information obtainable for design. The Contractor will be required to work around existing utilities within the right-of-way which do not conflict with proposed construction.
- Rubble from the removal of miscellaneous structures and excess excavation which is to be wasted shall be disposed of on sites to be provided by the Contractor. These sites shall be approved by the Engineer as to suitability, appearance and site location. Locations, in the opinion of the Engineer, that will leave an unsightly appearance will not be approved. All disposal sites must be approved by the Kansas Department of Health and Environment. Material either stockpiled or disposed of in a flood plain will require a Kansas State Board of Agriculture permit. Any material dumped in waters of the United States or wetlands is subject to U.S. Corps of Engineers permitting regulations. Any material buried or stockpiled beyond approved construction limits will require additional archaeological investigations unless buried in a previously approved borrow location.
- Trees and shrubs in public right-of-way which are in direct conflict with proposed new construction shall be removed by the Contractor with the City Engineer's approval. Trees and shrubs which are not in direct conflict with proposed new construction shall be saved and protected from damage.
- The Contractor shall give all property owners and/or tenants of developed property abutting the construction of this project a minimum of ten (10) days notice prior to start of construction.
- The Contractor shall be responsible for preserving property irons. The Contractor will be required to re-establish any property irons which are damaged or destroyed by his construction operations. Such irons shall be re-established by a licensed land surveyor in accordance with state laws.
- The Engineering Division shall field locate water valve one time during construction when requested by the Contractor. It shall be the Contractor's responsibility to preserve such field locations during the construction process. Water valves, valve boxes or fire hydrants damaged during construction shall be repaired by Contractor at his own expense. Valve boxes and water meters within the project limits shall be adjusted to match field grades by the contractor.
- The Contractor shall notify the consultant engineer and Dawnita Reinhardt at 316-650-0740 with the City of Wichita with the anticipated construction start date and notify them of project completion. Staking and inspection for this project will be the responsibility of the Contractor.
- If traffic will be impacted by construction, a traffic control plan must be submitted and approved by the City Traffic Engineer at traffic@wichita.gov before construction can begin. The Contractor shall be responsible for all traffic control measures to facilitate construction. All construction zone markings and signage shall conform to the latest version of Manual on Uniform Traffic Control Devices (MUTCD) as published by the US Dept. of Transportation, Federal Highway Administration. All costs associated with construction markings and signage shall be the Contractors responsibility.
- All elevations shown are NAVD88.
- All areas disturbed during construction that will not be under proposed pavement shall be restored to match existing conditions per City specifications.

- City maintenance of storm sewer ends at last structure in the easement.
- A portion of excess excavated material shall be mounded around manholes which extend more than one (1) foot above the existing ground. Such mound shall be constructed with new development a six (6) foot diameter flat top with 4 to 1 side slopes down to the original ground. The elevation of the flat top of the mound shall be 0.4 foot below the top to the manhole.
- Contractor shall limit the extent of trench openings overnight and weekends to less than 50 feet.
- The inspecting firm shall submit to the City Stormwater Maintenance Division a digital copy of the CCTV inspection of the conduits and structures following construction. The digital file formation shall be compatible with the City input template. A copy of the template is available upon request at 316-268-4090.
- The Contractor shall protect from damage and support existing utilities through construction as approved by the utility owner and the Engineer at the contractor's expense.
- All existing and proposed erosion control measures including silt fencing, erosion control mat, straw bales, inlet barriers, and const. entrance shall be maintained throughout construction by the contractor and until project is accepted by the City of Wichita. The on-site engineer shall complete weekly reports on the status of erosion control measures. The contractor shall be required to comply with maintenance and/or replacement of erosion control measures as determined by the on-site engineer until project is accepted by City of Wichita. Maintenance and/or replacement of erosion control measures to be paid by L.S. bid item "Maintain Existing BMPs".
- All excess excavation shall remain on-site and shall be stockpiled or spread at a location determined by the engineer.
- All areas disturbed during construction (except building pads) are to be seeded as follows:
 Seed -- Rye grass; 5 lbs./1000 Sq. Ft.
 All costs associated with seeding including mobilization, preparation of ground, seeding, fertilizing, mulching, etc. shall be included in the L.S. bid item "Seeding".
- The Contractor shall not begin work on the project until the Project Inspector is assigned and on site. Any work completed without inspection will be required to be uncovered for inspection at the Contractor's expense.

Benchmarks

BM #1: Square cut on top of curb, approx. 90.3' east and 22.4' north of the northwest corner of Lot 1, Circuit City Addition, Wichita, Sedgwick County, KS
 Elevation = 1,331.86(NAVD 88)

BM #2: Square cut on top of curb, approx. 221.6' east and 8.6' north of the northeast corner of Lot 1, Circuit City Addition, Wichita, Sedgwick County, KS
 Elevation = 1,333.77(NAVD 88)

15" RCP = WICHITA CONCRETE PIPE = 307 LF.
15" RC END SECTION = WCP = 1 EACH.
INLET GRATES = NEENAH FOUNDRY = 4 EACH.
INLET FRAMES = NEENAH FOUNDRY = 2 EACH.
FRAME & COVER = NEENAH FOUNDRY = 2 EACH.

AS - BUILT PLANS

STORM SEWER IMPROVEMENTS

to serve

EDDY'S LINCOLN

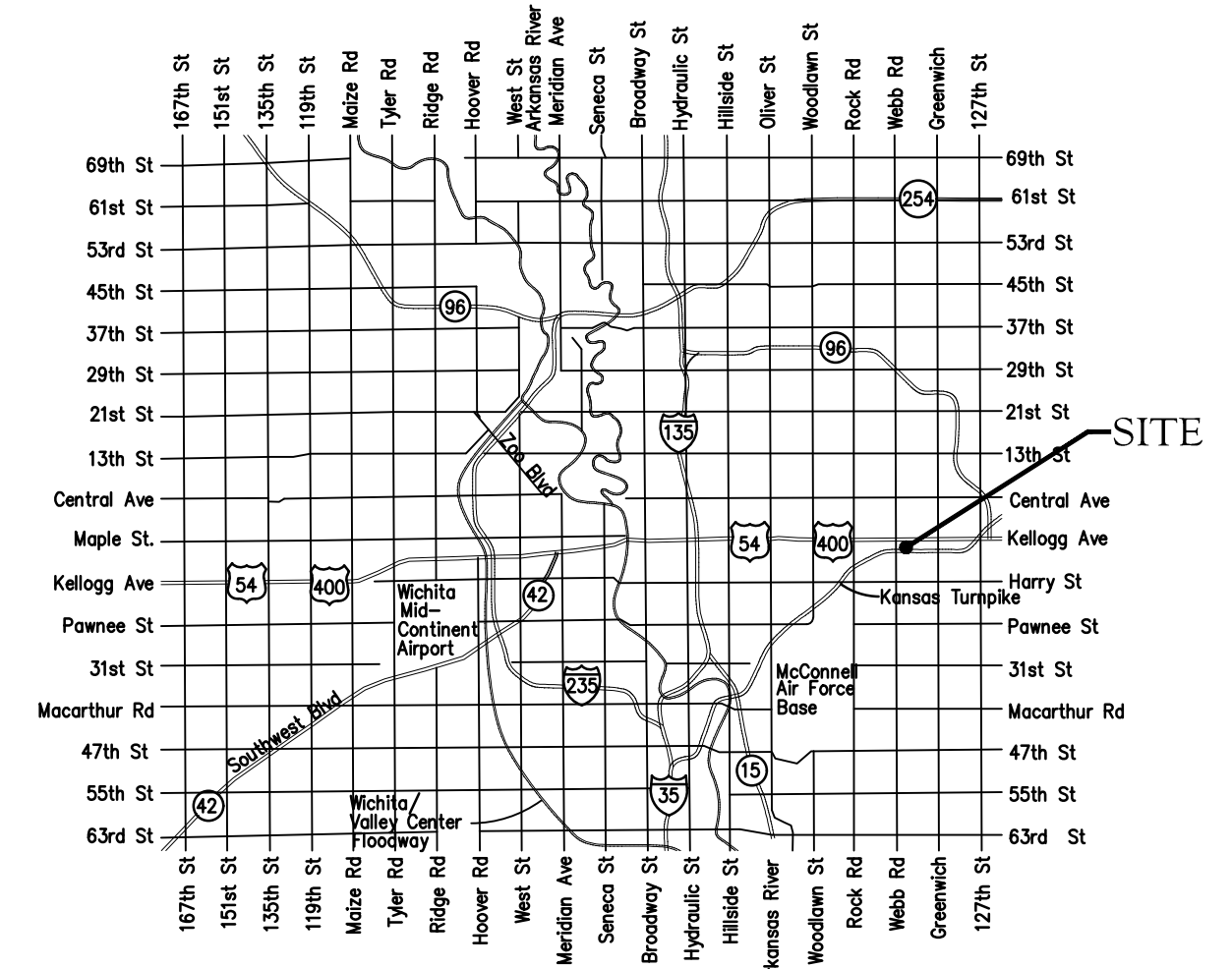
E. KELLOGG AVE.

CITY OF WICHITA, KANSAS

Paul Gunzelman, P.E. Interim City Engineer

2023-000826PPD

56030970



Vicinity Map

UTILITY CONTRACTOR: ALAN'S EXCAVATING
INSPECTOR: FRED SMITH
BAUGHMAN COMPANY
AS-BUILTS BY: FRED SMITH & LARRY POWELL
10-11-2023 & 10-17-2023

WORK PERFORMED:
AUGUST 2023

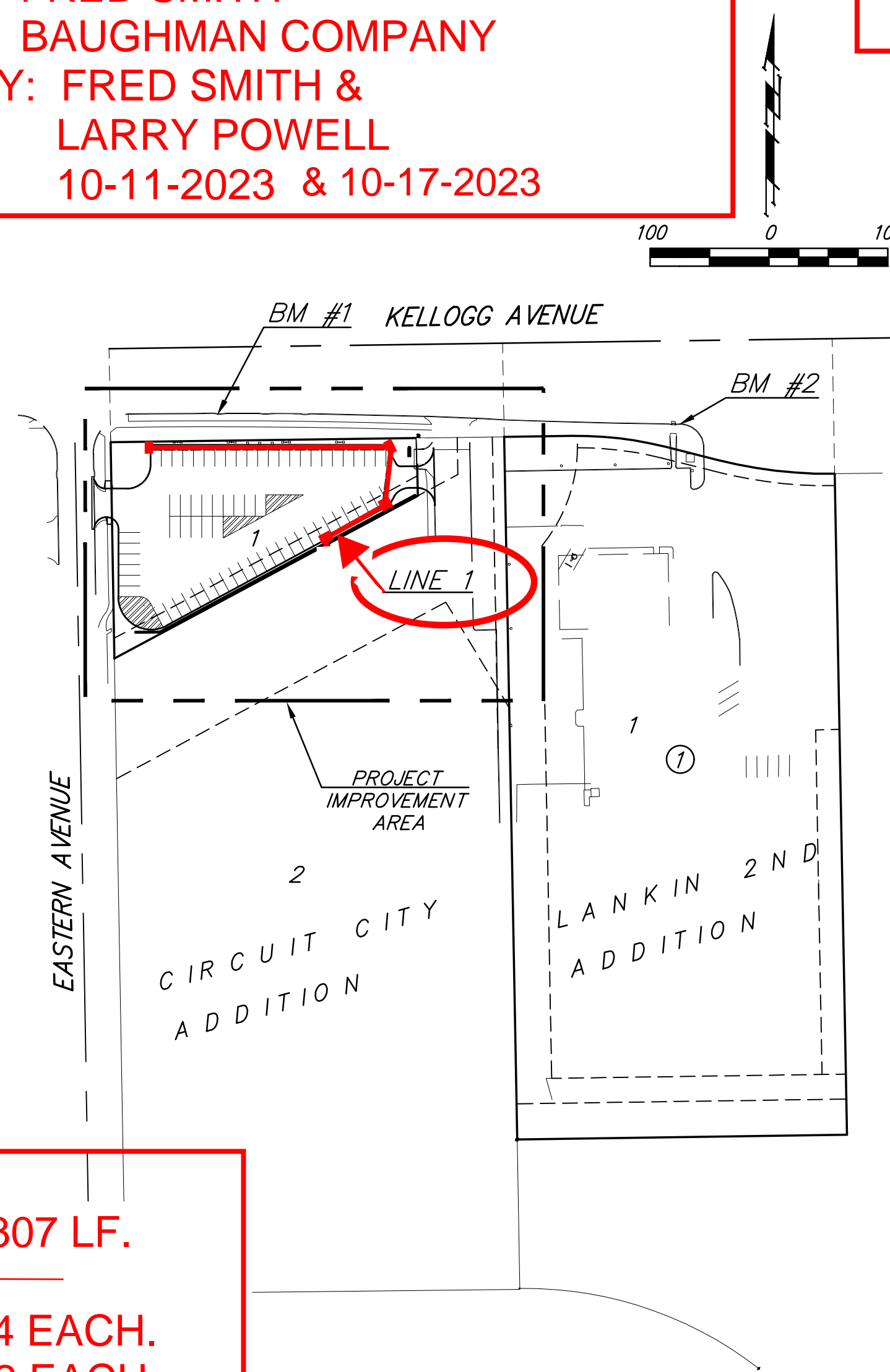
Sheet Index

Title Sheet	1
Line 1	2
Erosion Control/Grading Plan	3
Type 1 Inlet L=5' and 10' Detail	4
Single-Double Drop Inlet Detail	5
Miscellaneous Detail	6
Erosion Control BMP Details	7-11
Copy of Plat	12

Stormwater Certification:
 New Development Redevelopment (Circle One)
 Stormwater Permit # SW02023-0041
 NOI Permit # N/A

These construction plans were prepared in accordance with the current Stormwater management Regulations as set forth in the City of Wichita's Stormwater Management Ordinance 16.32 and the policies/guidelines presented in the Wichita/Sedgwick County Stormwater Manual.

Site Area (Acres) = 0.68 Ac.
 Disturbed Area (Acres) = 0.68 Ac.
 Water Quality Treatment: Offsite BMP Program
 Downstream Channel Protection: N/A
 Detention: N/A
 The BMP used for this development is Offsite BMP Program



APPROVED AS NOTED
 BY WICHITA PUBLIC WORKS ENGINEERING
 AND STORMWATER DIVISION

Engineering approved by Shawn Mellies on 07.27.23

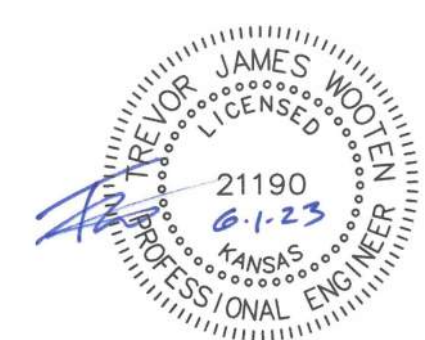
Stormwater approved by Joe Hickle on 07.27.23

NOTE TO CONTRACTORS

Inspection and testing for this project is to be provided by a Licensed Consulting Engineering Firm under contract with the Owner/Developer. Said Inspection to be in accordance with the City of Wichita standard construction engineering practices and certified by a Licensed Professional Engineer in the state of Kansas. No work shall be performed by the Contractor without such inspection nor shall any work be commenced without written authorization by City Engineering. All Construction and Materials shall comply with the current City of Wichita Specifications and Standards and Special Provisions (on file and available at Wichita.gov).

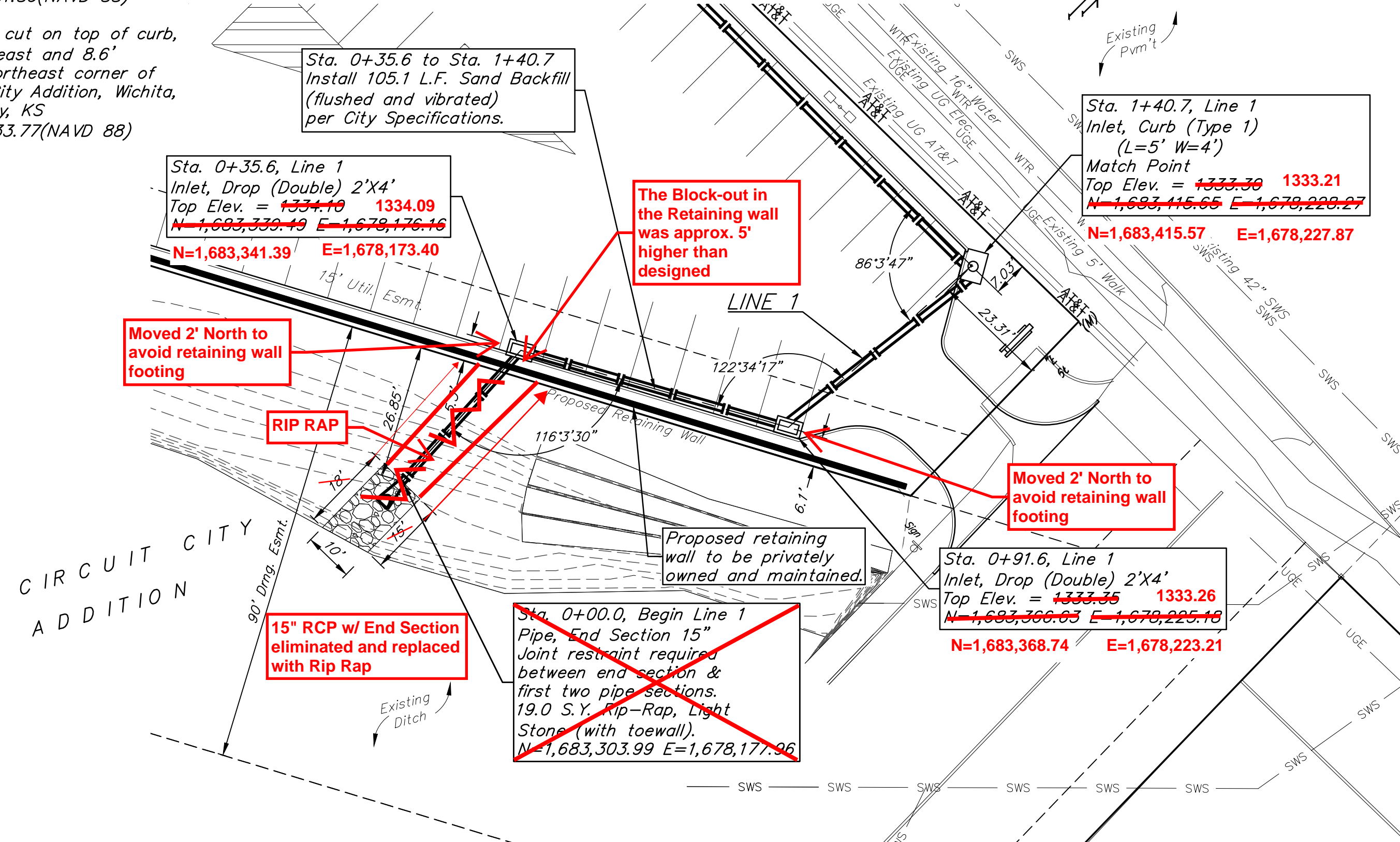
An approved copy of these plans signed by City staff are required on-site.

BAUGHMAN PROJECT #: 23-08-E574



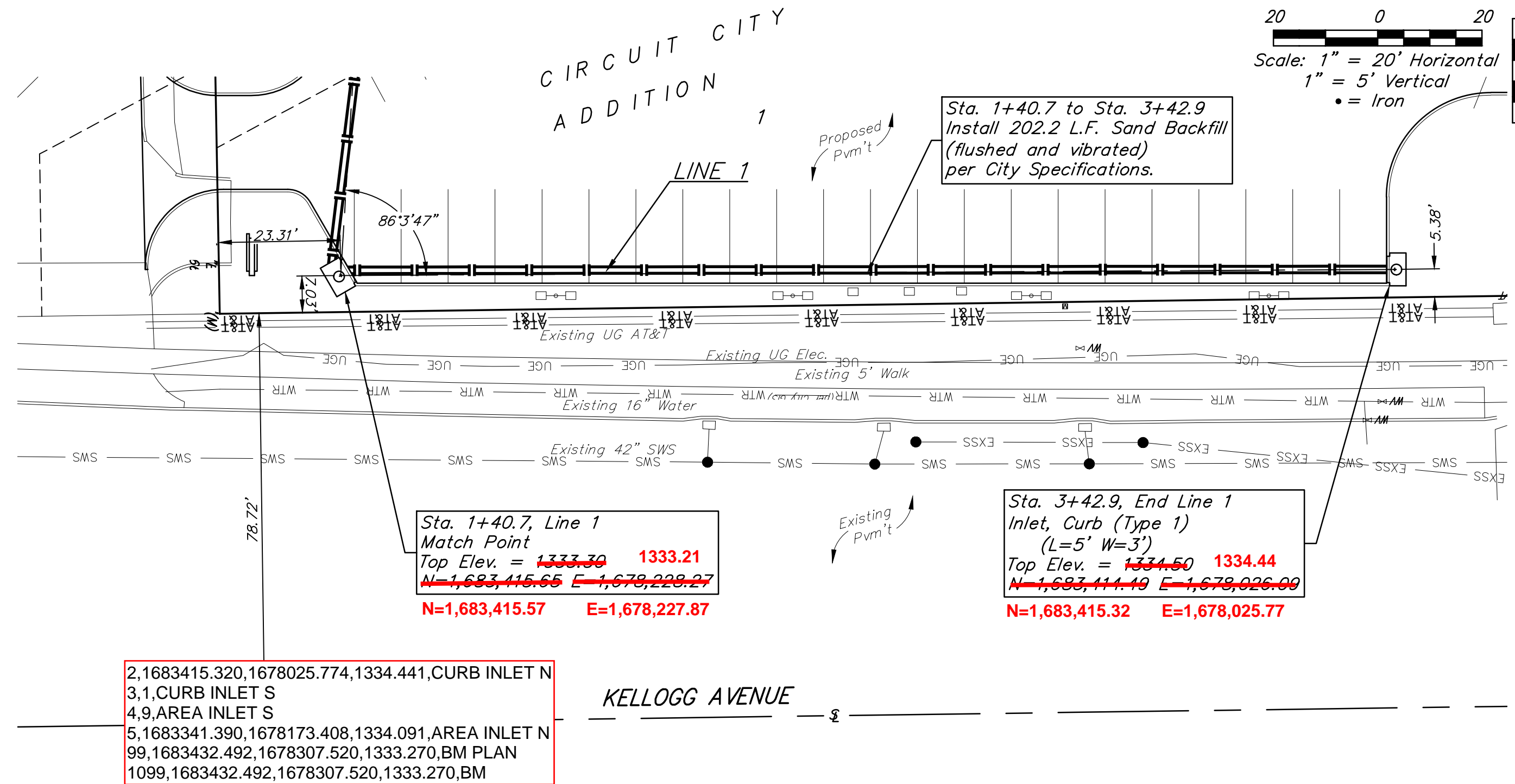
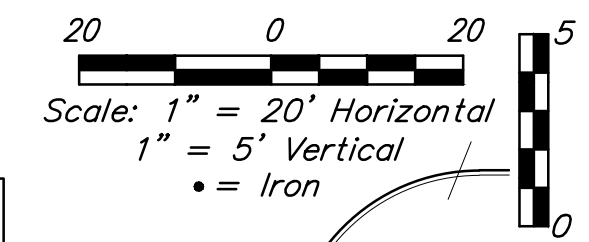
BENCHMARKS:
 BM #1: Square cut on top of curb, approx. 90.3' east and 22.4' north of the northwest corner of Lot 1, Circuit City Addition, Wichita, Sedgwick County, KS
 Elevation = 1331.86(NAVD 88)

BM #2: Square cut on top of curb, approx. 221.6' east and 8.6' north of the northeast corner of Lot 1, Circuit City Addition, Wichita, Sedgwick County, KS
 Elevation = 1331.77(NAVD 88)



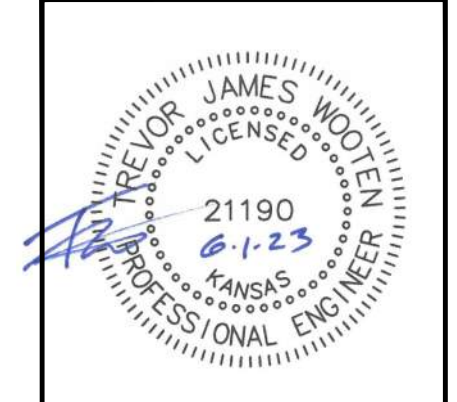
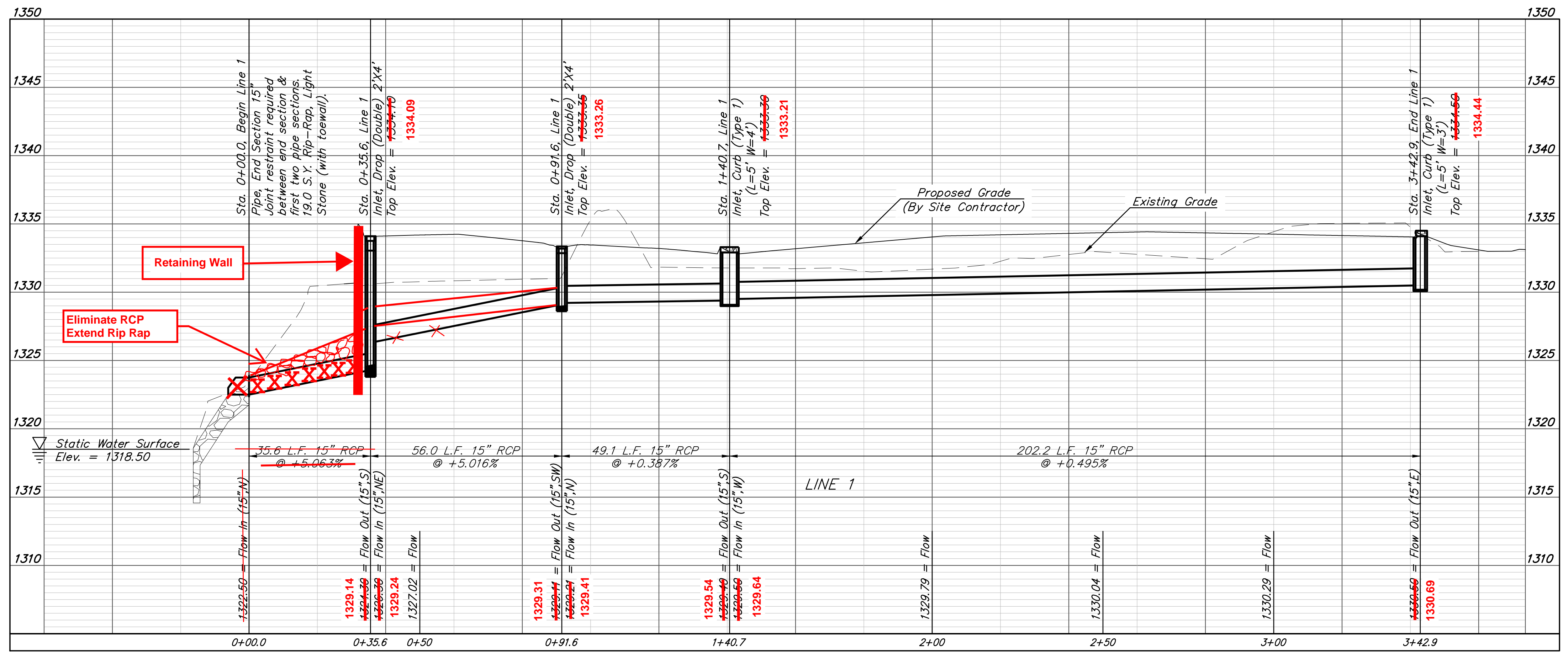
City Maintenance of storm sewer mains for structures and pipe within 90' drainage easement. All pipe and structures from Sta. 0+35.6 to the end of Line 1 are private sws system.

Contractor to verify depth and location of existing utilities. Contractor to relocate any existing utilities as necessary for construction.



2,1683415.320,1678025.774,1334.441,CURB INLET N
 3,1,CURB INLET S
 4,9,AREA INLET S
 5,1683341.390,1678173.408,1334.091,AREA INLET N
 99,1683432.492,1678307.520,1333.270,BM PLAN
 1099,1683432.492,1678307.520,1333.270,BM

Contractor to adjust proposed end section locations to match existing pond slopes.



BAUGHMAN COMPANY
 315 Ellis St.
 Wichita, KS 67211
 316-262-7271
 BaughmanCo.com

EDDY'S LINCOLN

LINE 1

STORM WATER SEWER IMPROVEMENTS

PROJECT NUMBER: 22-04-E170

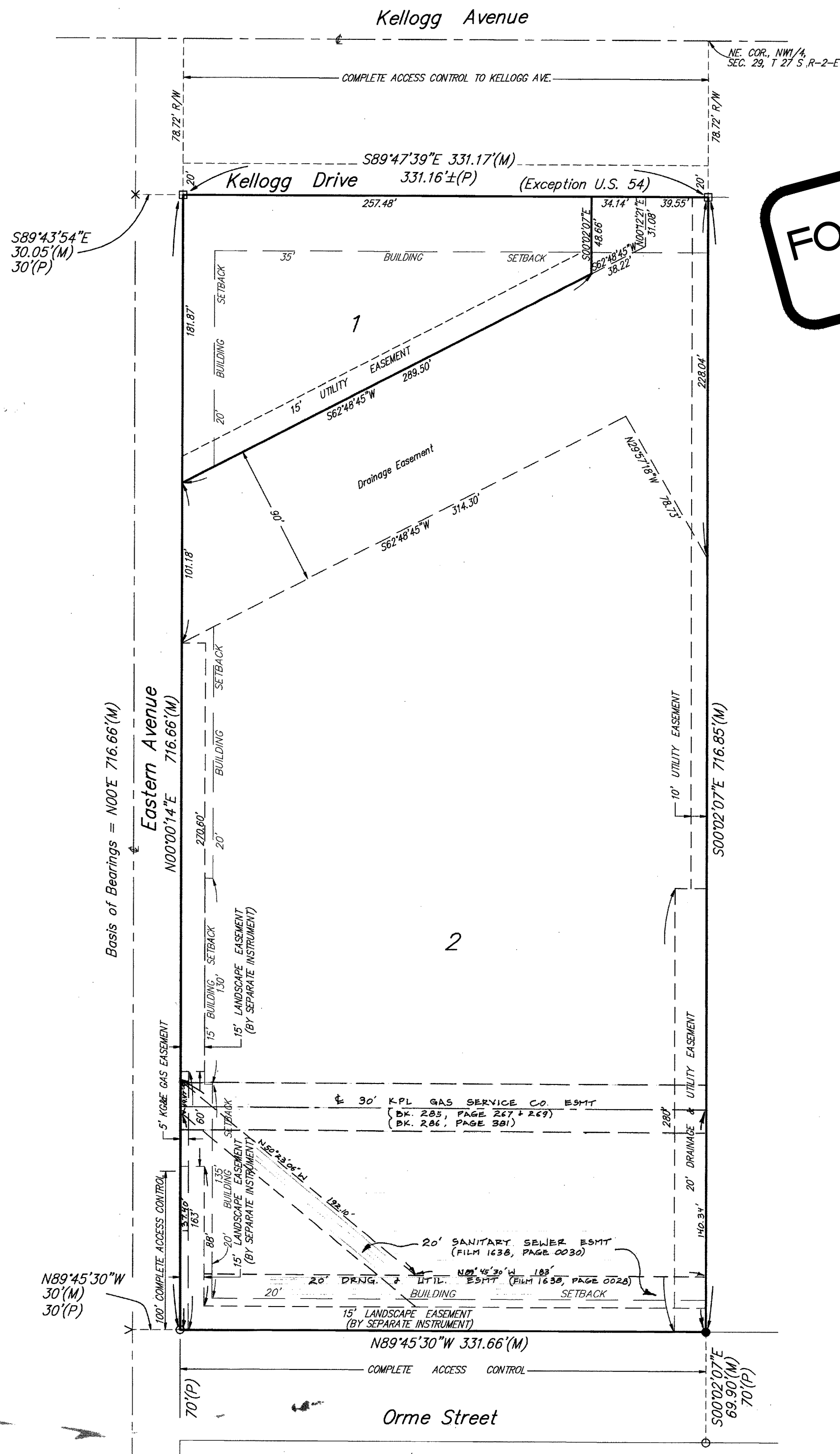
DESIGN: TJW DRAWN: TMS

DATE: June 1, 2023

SHEET OF 2 12

File: E:\Projects\Lincoln Of Wichita - Steven - Eddy's\Engineering\Phase 1\PPD\PPD.dwg

CIRCUIT CITY ADDITION WICHITA, SEDGWICK COUNTY, KANSAS



**FOR REFERENCE ONLY
NOT TO SCALE**

- (M) = Measured
(P) = Platted
- x = Chiseled Cross Found
 - = 3/4" Iron Pipe Found
 - = 1/2" Iron Pipe Found
 - ∧ = Chiseled V-Notch Found
 - = #4 Baughman Rebar Set

The Minimum Building Pad Elevation for the lowest opening to the structures on all Lots shall be: 1334.0 M.S.L. (146.6 City Datum)

No new building may be constructed on Lot 1 until a letter of Map Revision (LOMR) has been granted by Federal Emergency Management Agency, or unless new building fits within the existing building footprint. Any new building construction on Lot 1 shall meet the specified Minimum Pad as shown on the face of the plat.

BENCHMARK:
Eastern & Kellogg, City of Wichita Disc, 101.4' S. of Sec. Line on Kellogg & 92' S. of E. of Kellogg pavement, 23.6' W. of E. Eastern Elev. = 144.762 City Datum

State of Kansas) SS We, Baughman Company, P.A., Surveyors in aforesaid County and State do hereby certify that we have surveyed and platted "CIRCUIT CITY ADDITION", Wichita, Sedgwick County, Kansas and that the accompanying plat is a true and correct exhibit of the property surveyed, described as and being a replat of Lot 1 and 2, Weaver-Reimold Addition to Wichita, Kansas, together with Lot 1, Executives Inc. Addition, Wichita, Kansas.

All being located in the NW1/4 of Sec. 29, Twp. 27-S, R-2-E of the 6th P.M., Sedgwick County, Kansas.

Existing public easements and dedications being vacated by virtue of K.S.A. 12-512(b).

Baughman Co., P.A.

Gregory F. Severns
Gregory F. Severns 8-19-96 Surveyor
SEAL OF SEDGWICK COUNTY METROPOLITAN AREA KANSAS

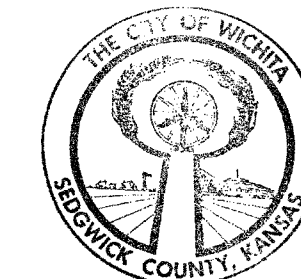
This plat of "CIRCUIT CITY ADDITION", Wichita, Sedgwick County, Kansas has been submitted to and approved by the Wichita-Sedgwick County Metropolitan Area Planning Commission, Wichita, Kansas. Dated this 15th day of February, 1996. Wichita-Sedgwick County Metropolitan Area Planning Commission



Susan Osborne-Howes Chair
Susan Osborne-Howes

Marvin S. Krout Secretary
Marvin S. Krout

This plat approved and all dedications shown hereon accepted by the City Council of the City of Wichita, Kansas, this 24th day of September, 1996.



Bob Knight Mayor
Bob Knight

Pat Burnett City Clerk
Pat Burnett

Know all men by these presents that we, the undersigned, have caused the land in the surveyors certificate to be platted into Lots to be known as "CIRCUIT CITY ADDITION", Wichita, Sedgwick County, Kansas. The utility easements are hereby granted as indicated for the construction and maintenance of all public utilities. The drainage and utility easement is hereby granted as indicated for drainage purposes and for the construction and maintenance of all public utilities. The drainage easement is hereby granted as indicated for drainage purposes. The K&E gas line easement is hereby granted as indicated for the construction and maintenance of a K&E gas line. All abutters rights of access to or from Kellogg Avenue over and across the north line of Kellogg Drive, and to or from Orme Street over and across the south line of Lot 2, and to or from Eastern Avenue over and across the south 100 feet of the west line of Lot 2 are hereby granted to the City of Wichita, Kansas. The Minimum Building Pad Elevations for the lowest opening to the structures on all Lots shall be 1334.0 M.S.L. (146.6 City Datum).
Circuit City Stores, Inc., a Virginia Corporation

R. Bruce Lucas JP
R. BRUCE LUCAS (700)

Entered on transfer record this 5th day of October, 1996.

Susan E. Brackett-Spoon County Clerk
Susan E. Brackett-Spoon

State of Kansas) SS This is to certify that this plat has been filed for record in the office of the Register of Deeds, this 10th day of October, 1996, at 10:00 o'clock A.M. and is duly recorded.

Pat Kettler Register of Deeds
Pat Kettler by Deana Manheimer Deputy

Deana Manheimer Deputy
Ed-Ross Deana Manheimer

State of Virginia) SS The foregoing instrument acknowledged before me, this 26th day of August, 1996, by R. BRUCE LUCAS, Vice Pres. of Circuit City Stores, Inc., a Virginia Corporation, on behalf of the corporation.

Carl P. Brandt Notary Public
My App't. Exp. 2/28/97
CARL P. BRANDT

#1561544



BAUGHMAN COMPANY
315 Ellis St.
Wichita, KS 67211
316-262-7271
BaughmanCo.com

EDDY'S LINCOLN

COPY OF PLAT

STORM WATER SEWER IMPROVEMENTS
PROJECT NUMBER:
22-04-E170
DESIGN: DRAWN:
DATE: April 27, 2023
SHEET 12 OF 12