

STATE	PROJECT NO.	YEAR	SHEET NO.	TOTAL SHEETS
KANSAS				

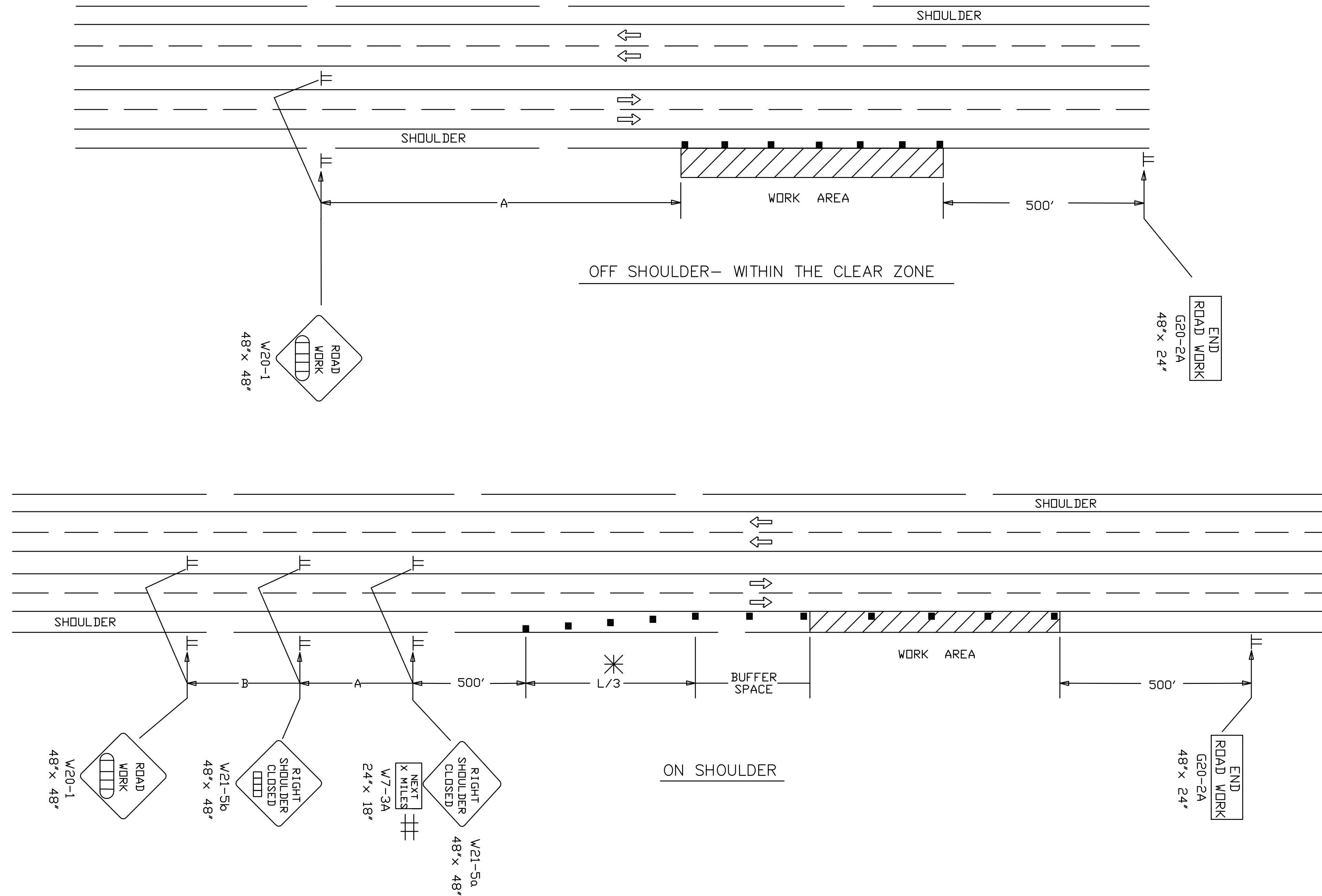
REFER TO STD. TE710 FOR ADDITIONAL INFORMATION ON TRAFFIC CONTROL SIGNS AND SIGN SPACING.
REFER TO STD. TE702 FOR INFORMATION ON TAPERS AND CHANNELIZING DEVICES.
REFER TO STD. TE700 FOR LENGTH OF BUFFER SPACE.

NOTE: FOR WORK IN THE MEDIAN, INSTALL SIGNS AND CHANNELIZING DEVICES FOR EACH DIRECTION OF TRAFFIC ACCORDING TO THE APPLICABLE TYPICAL DRAWING.

NO TRAFFIC CONTROL IS REQUIRED IF THE WORK AREA IS LOCATED OUTSIDE OF THE CLEAR ZONE.

FOR OPERATIONS OF 60 MINUTES OR LESS, ALL SIGNS AND CHANNELIZING DEVICES MAY BE ELIMINATED IF A VEHICLE WITH AN ACTIVATED FLASHING OR REVOLVING YELLOW LIGHT IS USED.

ADVANCED WARNING SIGNS SHALL BE USED ON THIS PROJECT



WHEN CONCRETE SAFETY BARRIER IS USED, CHANNELIZING DEVICES ARE NOT NEEDED ALONG THE TANGENT BARRIER SECTION.

⊞ ELIMINATE W7-3A IF SHOULDER IS CLOSED FOR LESS THAN 2 MILES.

* OMIT TAPER IF PAVED SHOULDER IS LESS THAN 8' WIDE.

X Length To The Nearest Whole Mile

- Channelizing Device
- ▭ AHEAD, 1500 FT OR 1 MILE
- ▭ AHEAD, 1000 FT, 1500 FT OR 1/2 MILE

3				
2	11-19-03	CHANGED BORDER	B. H.	S. A. B.
1	9-26-02	REMOVED G20-1 SIGNS	M. H.	S. A. B.
NO.	DATE	REVISIONS	BY	APP'D

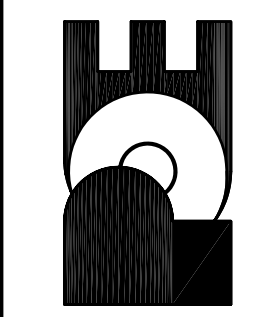
KANSAS DEPARTMENT OF TRANSPORTATION
TYPICAL TRAFFIC CONTROL
WORK ON OR NEAR THE SHOULDER
DIVIDED HIGHWAY

TE722	11-26-03	APP'D Michael P. McKenna	9/1/00
DESIGNED L. E. R.	DETAILED B. A. H.	QUANTITIES	TRACED
DESIGN CK.	DETAIL CK.	QUAN. CK.	TRACE CK.

No.	Date	By	Approved	Revision
1	8/30/07	JMU	JMU	Revised Alignment August 2007

MAIN 22 SW INTERCEPTOR SEWER
SANITARY SEWER IMPROVEMENTS
TEMPORARY TRAFFIC CONTROL DETAILS
CITY OF WICHITA, KANSAS
JAMES L. ARNOUR, P.E. - CITY ENGINEER
Prof.# 468-83861 O.C.# 622092

POE & ASSOCIATES, INC.
CONSULTING ENGINEERS
5940 E. Central, Suite 200 ■ Wichita, KS 67208-4242
Phone 316/685-4114 ■ FAX 316/685-4444



FINAL
Designed By: J. Ubert / B. Kullio
Drawn By: B. Kullio
[Proj. Job No.: 1805
Date: August 2007