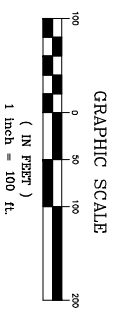
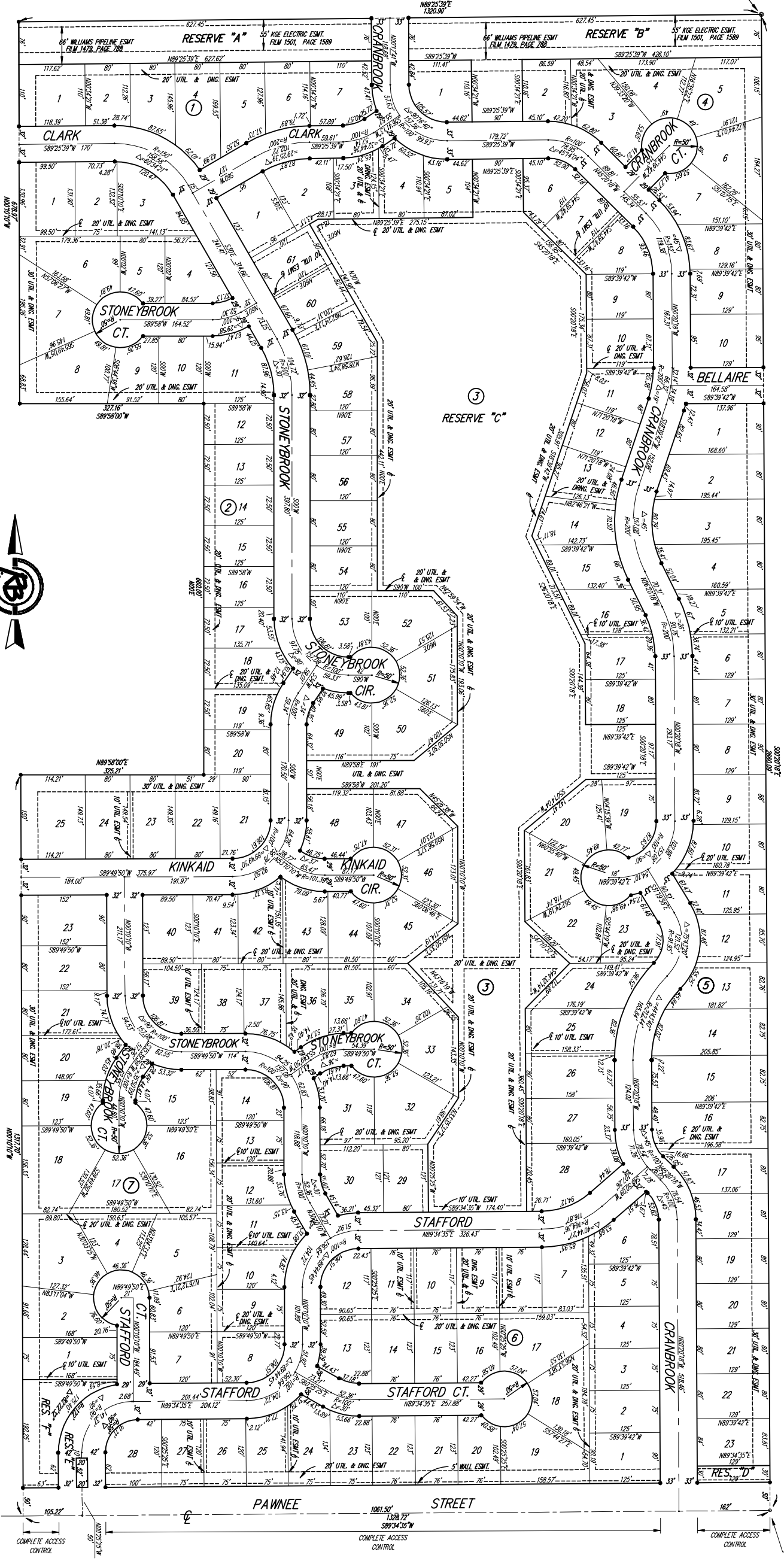


# BRENTWOOD SOUTH ADDITION

WICHITA, SEDGWICK COUNTY, KANSAS

N.E. COR. SW1/4  
SEC. 33-275-2E



| MINIMUM BUILDING PAD<br>ELEVATION FOR LOWEST<br>OPENING INTO STRUCTURE | LOT NO. | ELEVATION<br>(N.C.I.D.) |
|--|---------|-------------------------|
| Lots 1-20, 47  |         | 1389                    |
| Lots 50-61   |         |                         |

- △ = CITY OF WICHITA CONTROL (HARVEST (ROUND))
- = 1/2" REBAR W/ANCHOR CAP (ROUND)
- = 3/8" REBAR (ROUND)
- = 1/2" REBAR W/ANCHOR CAP (S1)

REMARKS: U.S. BASS FLAG 28" S. & 50" W.  
OF CENTERLINE INTERSECTION OF CROWN & PAVANEZ  
ELEV. = 1382.25 (MVD)  
REMARKS: 48" CITY OF WICHITA STD. JST.  
20' W. & 54.5' S. OF CENTERLINE INTERSECTION  
DUTTON & PAVANEZ  
ELEV. = 1379.60

Please contact Western Resources (or its successor)  
Electric Transmission Engineering Department (currently  
785-575-8219) before conducting any proposed  
construction activities that could place people,  
equipment, or facilities within Western Resources'  
easement, shown on this plat, designated as Film 1501,  
Page 1589, dated December 29, 1994.

**Ruggles & Bohm, P.A.**  
Sedgwick County, Kansas  
1501 W. 10th Street  
Wichita, Kansas 67202  
Tel: 785-733-1111  
Fax: 785-733-1112

**Brentwood South Addition  
FINAL PLAT  
WICHITA, KANSAS**

Sanitary Final Plat