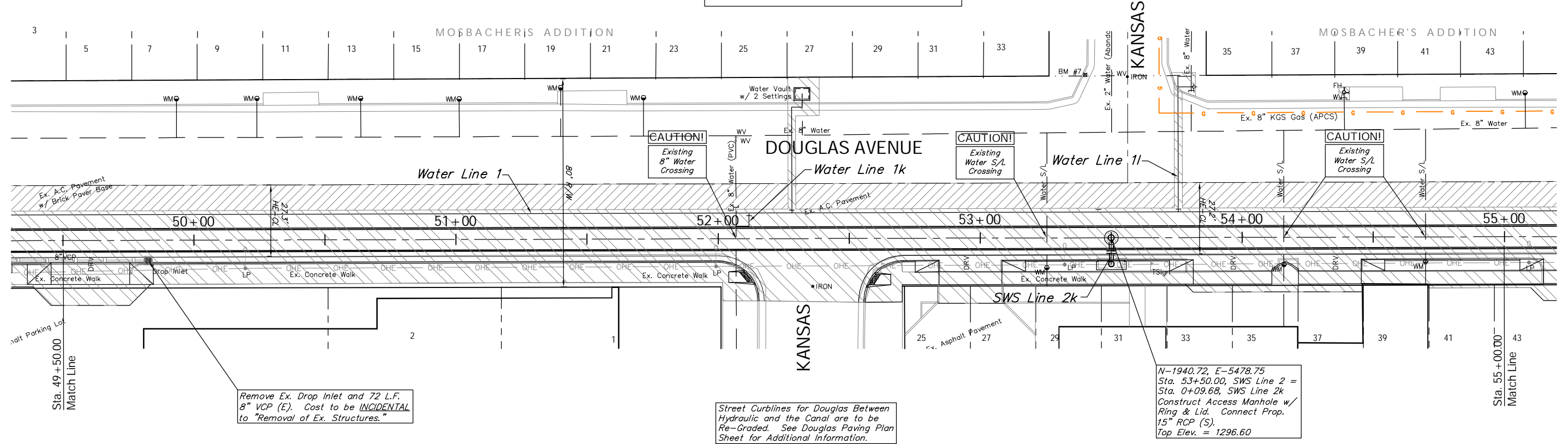
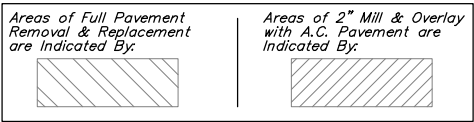


BENCHMARK:  
 BM #7 - Chiseled "□" Located Approximately 4' South of the Northwest  
 Curb Return at the Intersection of Douglas and Kansas,  
 41.2' North and 16.2' East of the Centerline of Both.  
 Elev. = 1297.19 (MSL)

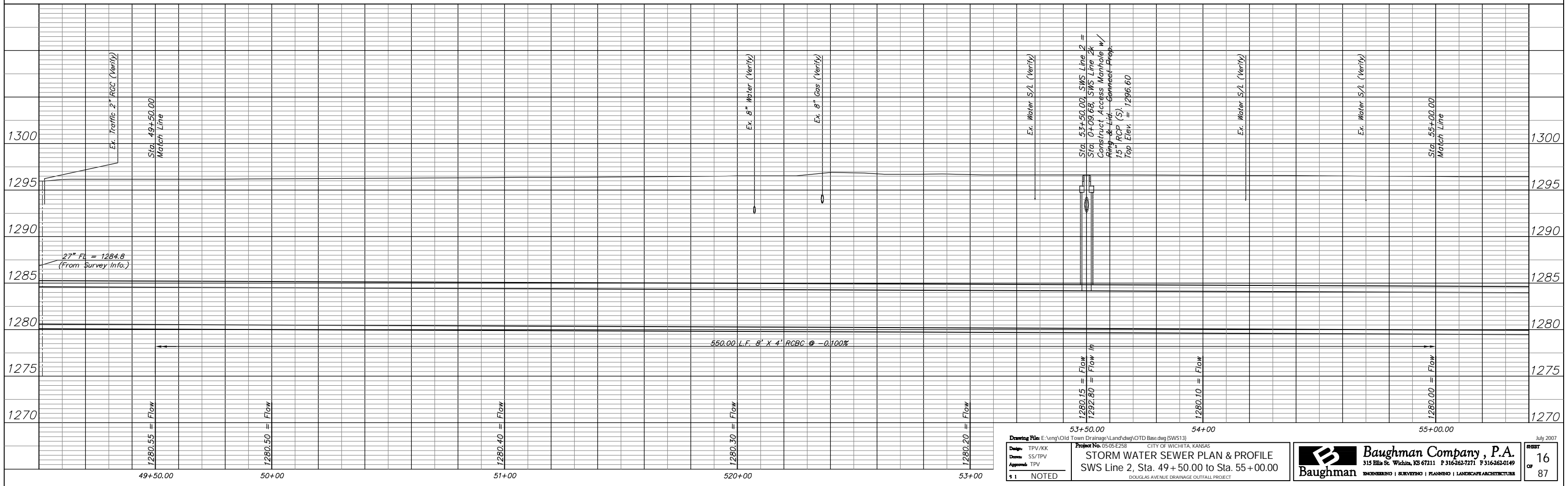
SCALE:  
 1" = 20' HORIZONTAL  
 1" = 5' VERTICAL



Remove Ex. Drop Inlet and 72 L.F.  
 8" VCP (E). Cost to be INCIDENTAL  
 to "Removal of Ex. Structures."

Street Curblines for Douglas Between  
 Hydraulic and the Canal are to be  
 Re-Graded. See Douglas Paving Plan  
 Sheet for Additional Information.

N-1940.72, E-5478.75  
 Sta. 53+50.00, SWS Line 2 =  
 Sta. 0+09.68, SWS Line 2k  
 Construct Access Manhole w/  
 Ring & Lid. Connect Prop.  
 15" RCP (S).  
 Top Elev. = 1296.60



Drawing File: E:\eng\Old Town Drainage\Land\dwg\OTD Base.dwg (SWS13)  
 Design: TPV/KK  
 Date: SS/TPV  
 Appr'd: TPV  
 Project No. 05-05-E258 CITY OF WICHITA, KANSAS  
**STORM WATER SEWER PLAN & PROFILE**  
 SWS Line 2, Sta. 49+50.00 to Sta. 55+00.00  
 DOUGLAS AVENUE DRAINAGE OUTFALL PROJECT

**Baughman Company, P.A.**  
 315 Ella St. Wichita, KS 67211 P 316-262-7271 F 316-262-0149  
 ENGINEERING | SURVEYING | PLANNING | LANDSCAPE ARCHITECTURE

July 2007  
 SHEET  
 16  
 OF  
 87