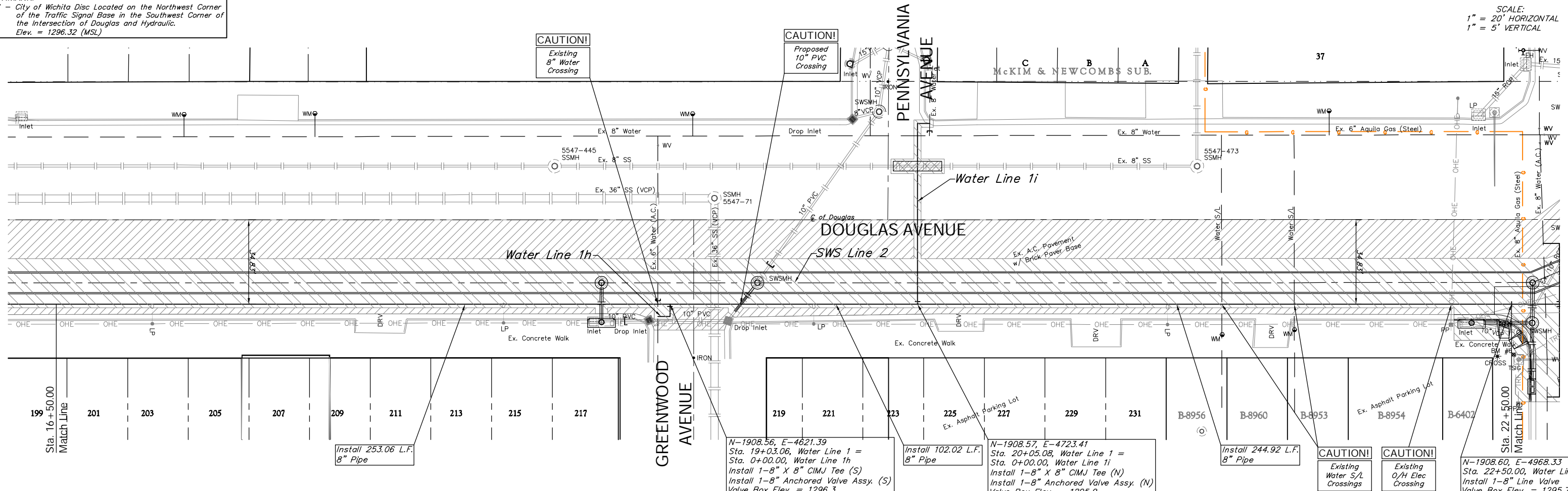


BENCHMARK:
 BM #6 - City of Wichita Disc Located on the Northwest Corner of the Traffic Signal Base in the Southwest Corner of the Intersection of Douglas and Hydraulic.
 Elev. = 1296.32 (MSL)

SCALE:
 1" = 20' HORIZONTAL
 1" = 5' VERTICAL



Install 253.06 L.F. 8" Pipe

N-1908.56, E-4621.39
 Sta. 19+03.06, Water Line 1 =
 Sta. 0+00.00, Water Line 1h
 Install 1-8" X 8" CIMJ Tee (S)
 Install 1-8" Anchored Valve Assy. (S)
 Valve Box Elev. = 1296.3

Install 102.02 L.F. 8" Pipe

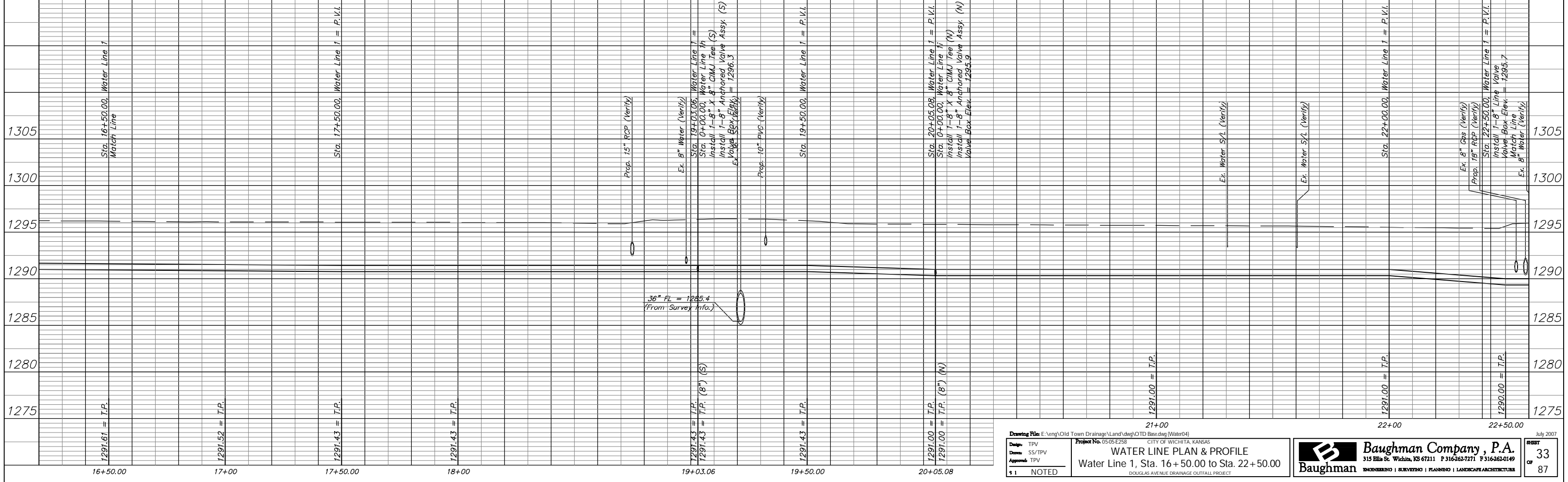
N-1908.57, E-4723.41
 Sta. 20+05.08, Water Line 1 =
 Sta. 0+00.00, Water Line 1i
 Install 1-8" X 8" CIMJ Tee (N)
 Install 1-8" Anchored Valve Assy. (N)
 Valve Box Elev. = 1295.9

Install 244.92 L.F. 8" Pipe

CAUTION!
 Existing Water S/L Crossings

CAUTION!
 Existing O/H Elec Crossing

N-1908.60, E-4968.33
 Sta. 22+50.00, Water Line 1
 Install 1-8" Line Valve
 Valve Box Elev. = 1295.7



Drawing File: E:\eng\Old Town Drainage\Land\dwg\OTD Base.dwg (Water04)
 Design: TPV
 Date: SS/TPV
 Approved: TPV
 Project No. 05-05-E258
 CITY OF WICHITA, KANSAS
WATER LINE PLAN & PROFILE
 Water Line 1, Sta. 16+50.00 to Sta. 22+50.00
 DOUGLAS AVENUE DRAINAGE OUTFALL PROJECT

Baughman Company, P.A.
 315 Ella St. Wichita, KS 67211 P 316-262-7271 F 316-262-0149
 ENGINEERING | SURVEYING | PLANNING | LANDSCAPE ARCHITECTURE