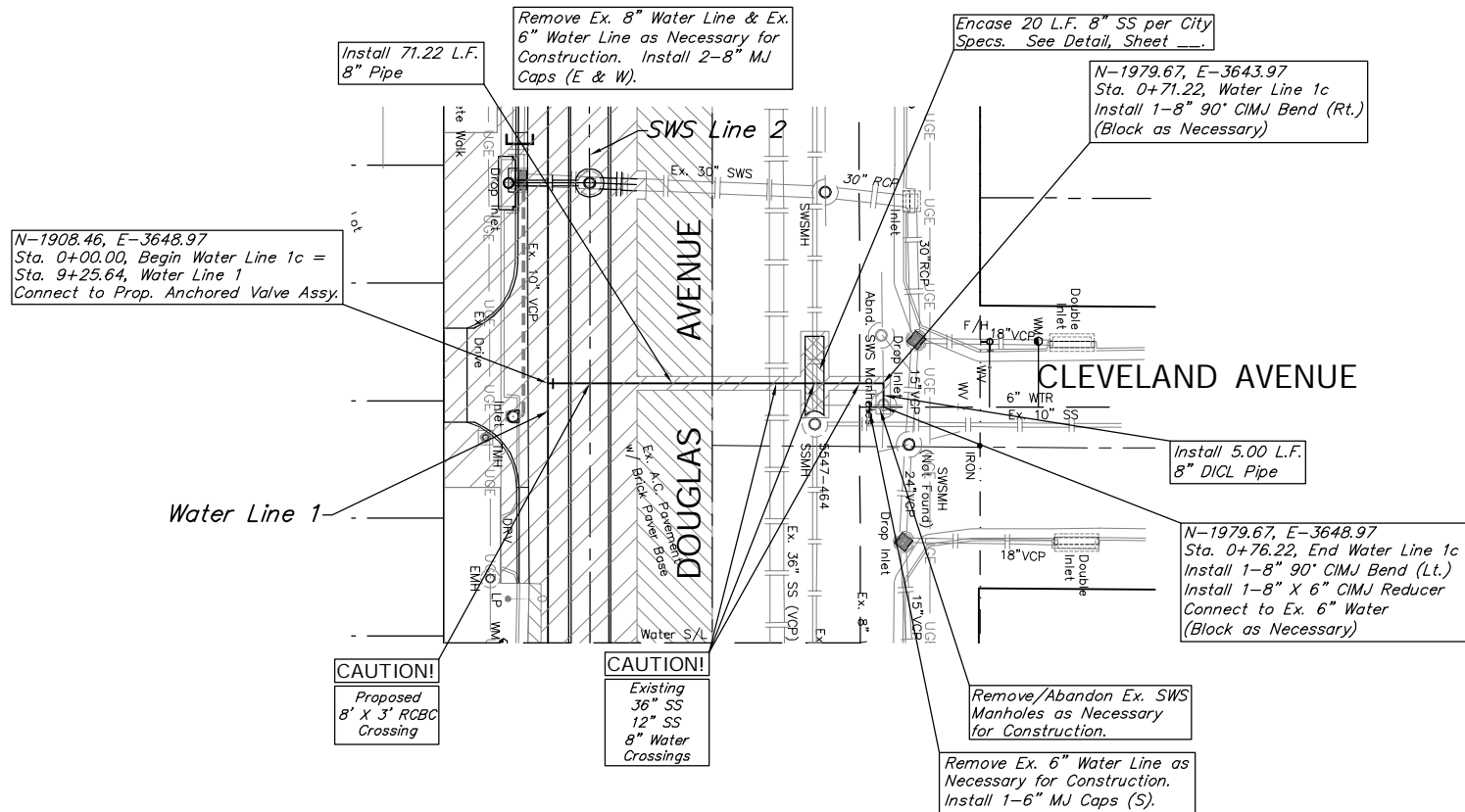


BENCHMARK:  
 BM #4 - Chiseled "□" Located on the Southwest Curb Return at the Intersection of Douglas and Pattie, 45.5' South and 26.5' East of the Centerline of Both. Elev. = 1293.95 (MSL)

SCALE:  
 1" = 20' HORIZONTAL  
 1" = 5' VERTICAL



BENCHMARK:  
 BM #5 - Chiseled "□" Located on the Southwest Curb Return at the Intersection of Douglas and Ellis, 50.4' South and 24.6' East of the Centerline of Both. Elev. = 1296.81 (MSL)

SCALE:  
 1" = 20' HORIZONTAL  
 1" = 5' VERTICAL

