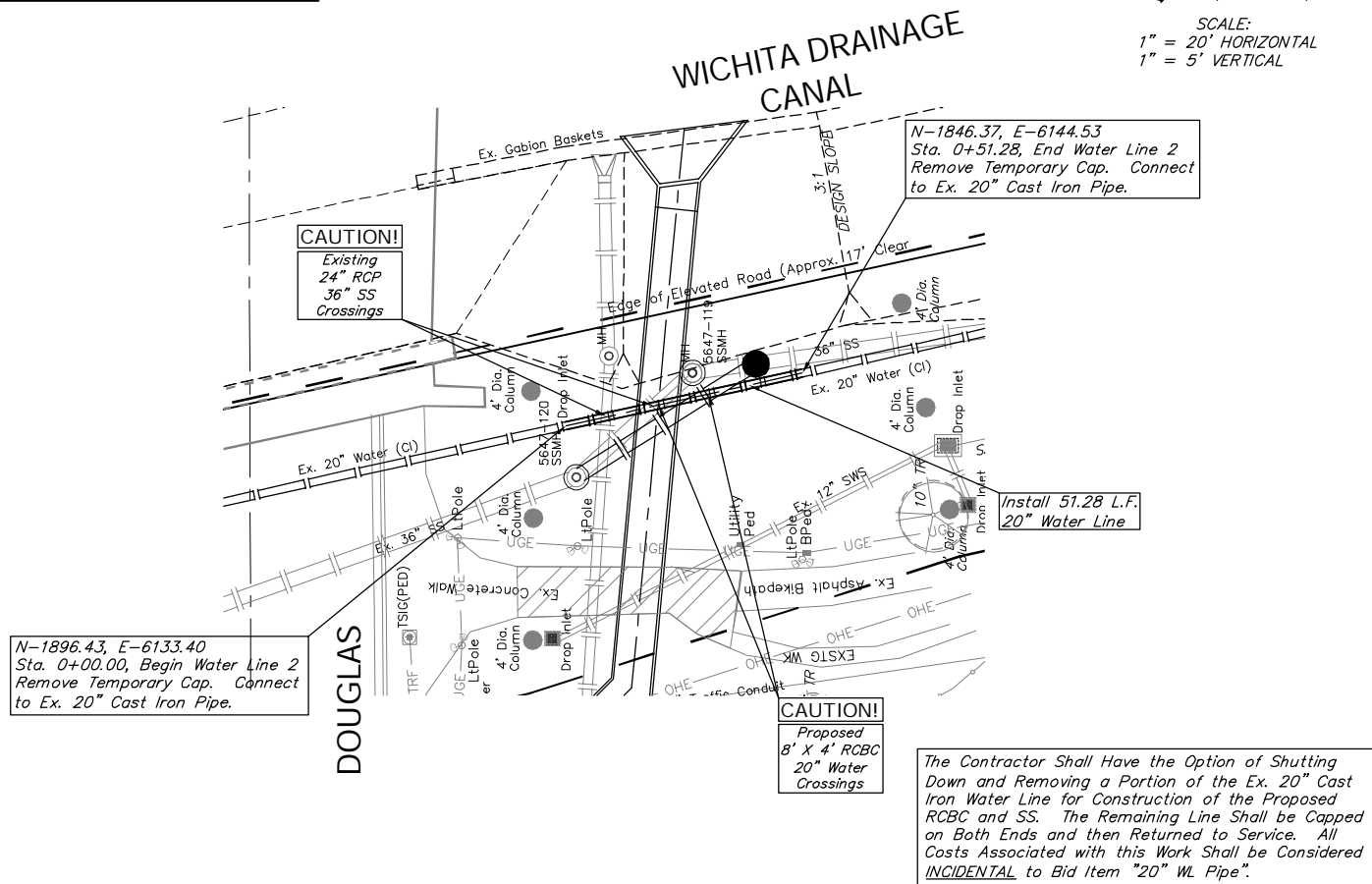


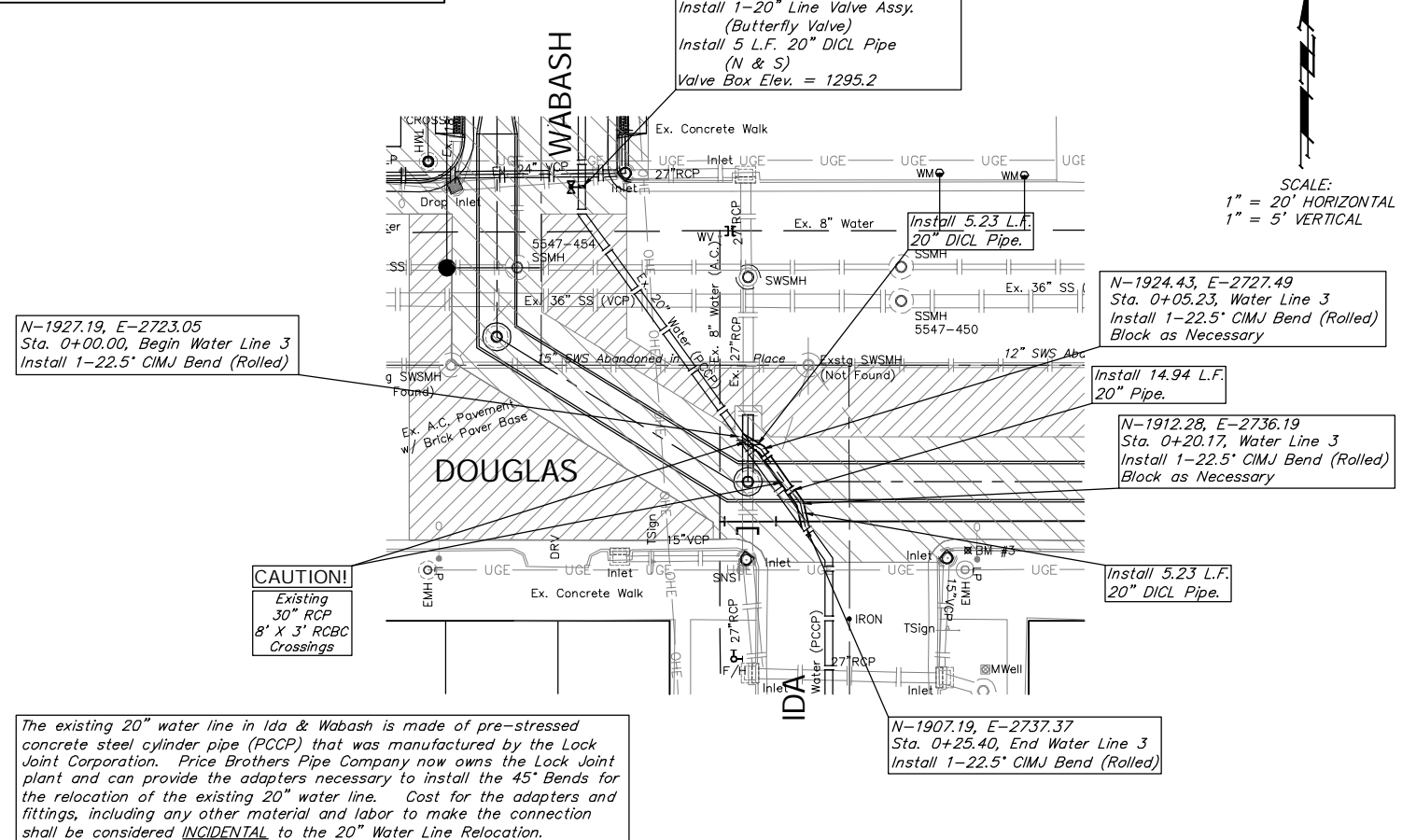
BENCHMARK:  
 BM #9 - City of Wichita Disc Located on Top of the Corral Rail at the Southwest Corner of the Douglas Street Bridge Over the Wichita Drainage Canal.  
 Elev. = 1300.27 (MSL)

SCALE:  
 1" = 20' HORIZONTAL  
 1" = 5' VERTICAL



BENCHMARK:  
 BM #3 - Chiseled "□" Located on the Southeast Curb Return at the Intersection of Douglas and Ida, 41.60' South and 26.5' East of the Centerline of Both.  
 Elev. = 1295.59 (MSL)

SCALE:  
 1" = 20' HORIZONTAL  
 1" = 5' VERTICAL



N-1896.43, E-6133.40  
 Sta. 0+00.00, Begin Water Line 2  
 Remove Temporary Cap. Connect to Ex. 20" Cast Iron Pipe.

N-1846.37, E-6144.53  
 Sta. 0+51.28, End Water Line 2  
 Remove Temporary Cap. Connect to Ex. 20" Cast Iron Pipe.

Install 51.28 L.F. 20" Water Line

CAUTION!  
 Proposed 8' X 4' RCBC 20" Water Crossings

The Contractor Shall Have the Option of Shutting Down and Removing a Portion of the Ex. 20" Cast Iron Water Line for Construction of the Proposed RCBC and SS. The Remaining Line Shall be Capped on Both Ends and then Returned to Service. All Costs Associated with this Work Shall be Considered **INCIDENTAL** to Bid Item "20" WL Pipe".

N-1927.19, E-2723.05  
 Sta. 0+00.00, Begin Water Line 3  
 Install 1-22.5' CIMJ Bend (Rolled)

N-1962.95, E-2687.50  
 Saw & Remove Ex. 20" Water Line as Necessary  
 Install 1-20" Line Valve Assy. (Butterfly Valve)  
 Install 5 L.F. 20" DICL Pipe (N & S)  
 Valve Box Elev. = 1295.2

N-1924.43, E-2727.49  
 Sta. 0+05.23, Water Line 3  
 Install 1-22.5' CIMJ Bend (Rolled) Block as Necessary

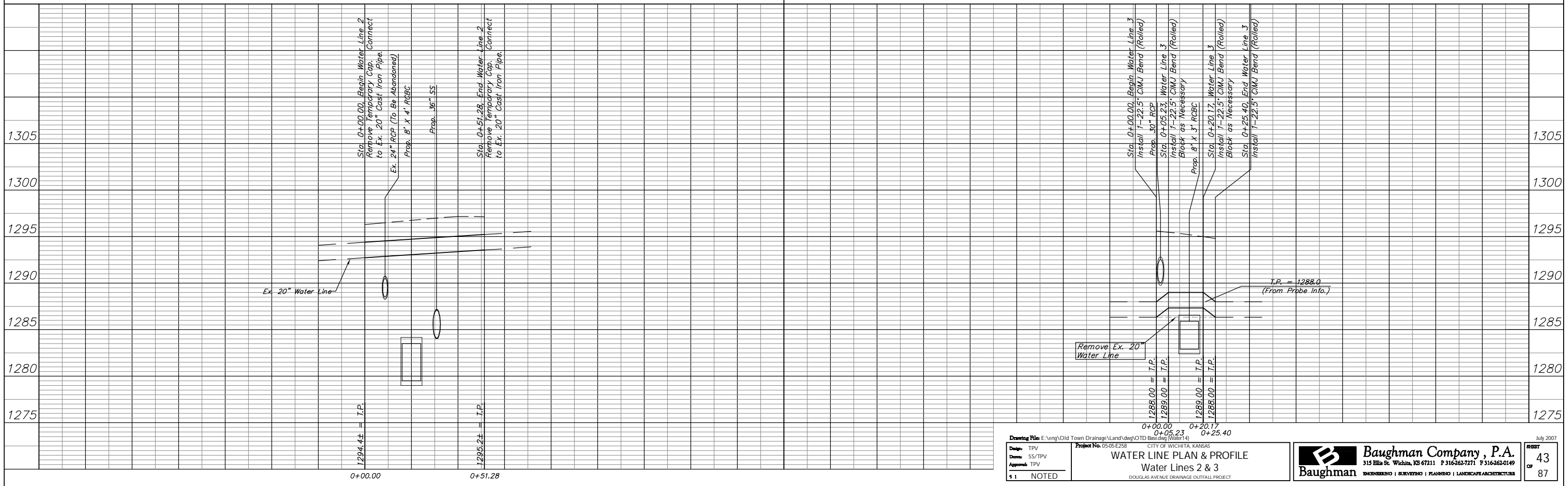
Install 14.94 L.F. 20" Pipe.

N-1912.28, E-2736.19  
 Sta. 0+20.17, Water Line 3  
 Install 1-22.5' CIMJ Bend (Rolled) Block as Necessary

Install 5.23 L.F. 20" DICL Pipe.

N-1907.19, E-2737.37  
 Sta. 0+25.40, End Water Line 3  
 Install 1-22.5' CIMJ Bend (Rolled)

The existing 20" water line in Ida & Wabash is made of pre-stressed concrete steel cylinder pipe (PCCP) that was manufactured by the Lock Joint Corporation. Price Brothers Pipe Company now owns the Lock Joint plant and can provide the adapters necessary to install the 45° Bends for the relocation of the existing 20" water line. Cost for the adapters and fittings, including any other material and labor to make the connection shall be considered **INCIDENTAL** to the 20" Water Line Relocation.



Sta. 0+00.00, Begin Water Line 3  
 Install 1-22.5' CIMJ Bend (Rolled)  
 Prop. 30' RCP  
 Sta. 0+05.23, Water Line 3  
 Install 1-22.5' CIMJ Bend (Rolled) Block as Necessary  
 Prop. 8' X 3' RCBC  
 Sta. 0+20.17, Water Line 3  
 Install 1-22.5' CIMJ Bend (Rolled) Block as Necessary  
 Sta. 0+25.40, End Water Line 3  
 Install 1-22.5' CIMJ Bend (Rolled)

Remove Ex. 20" Water Line

T.P. = 1288.0  
 (From Probe Info.)

Drawing File: E:\eng\Old Town Drainage\Land\dwg\OTD\Bearing\Water41  
 Design: TPV  
 Date: SS/TPV  
 Approved: TPV  
 Project No. 05-05-E258  
 CITY OF WICHITA, KANSAS  
**WATER LINE PLAN & PROFILE**  
 Water Lines 2 & 3  
 DOUGLAS AVENUE DRAINAGE OUTFALL PROJECT

July 2007  
**Baughman Company, P.A.**  
 315 Ella St. Wichita, KS 67211 P 316-262-7271 F 316-262-0149  
 ENGINEERING | SURVEYING | PLANNING | LANDSCAPE ARCHITECTURE  
 SHEET 43 OF 87