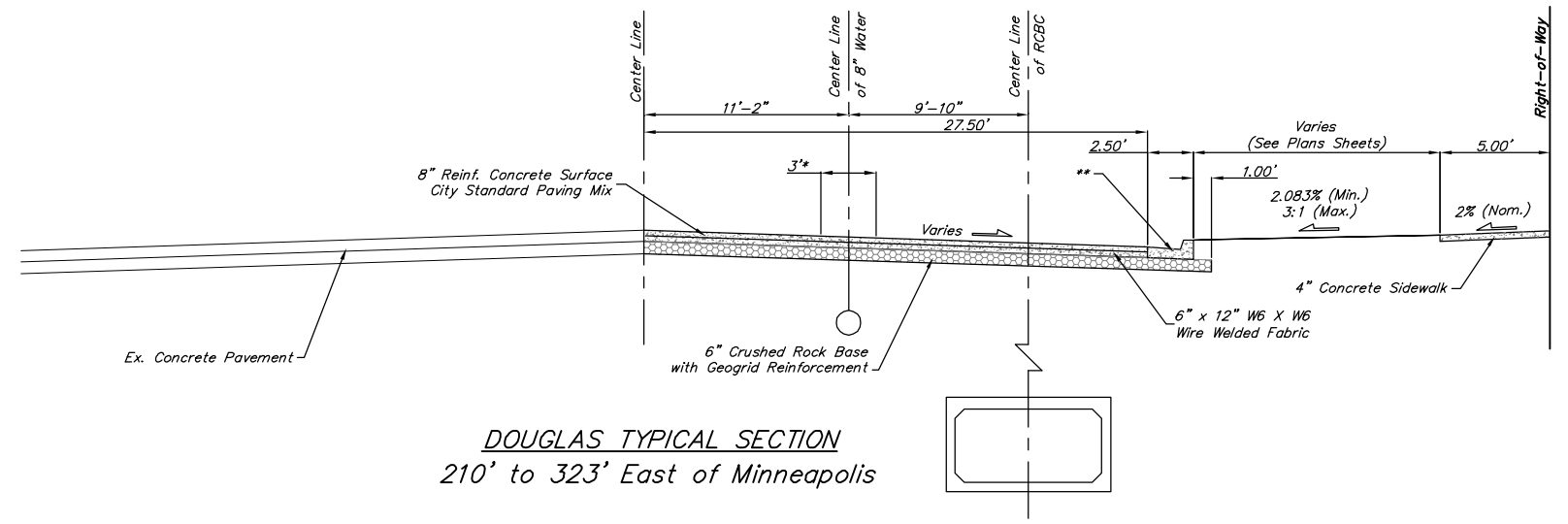
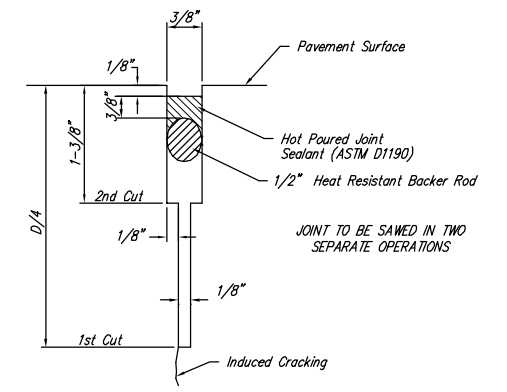


This 3' Wide Pavement Removal & Replacement Shall be Paid for by the Lump Sum Bid Item "Pavement Removal & Replacement" with the Douglas Water Main Replacement Project (#448-90289).

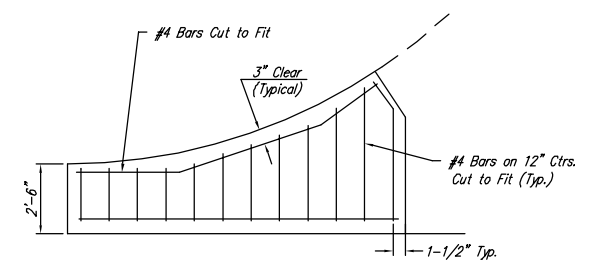


DOUGLAS TYPICAL SECTION
210' to 323' East of Minneapolis

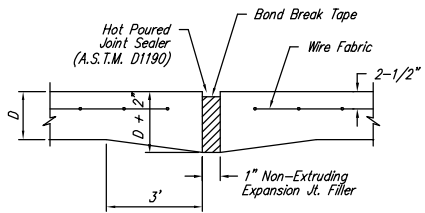
(**) Contractor to Either Construct 6" Curb and Gutter with Dowel Reinforcement per City Specifications, or Construct 6" Integral Curb. Cost to be INCIDENTAL "Combined Curb & Gutter Removal & Replacement".



SAW JOINT DETAIL "A"

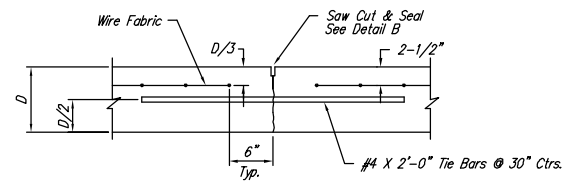


WING REINFORCING DETAIL

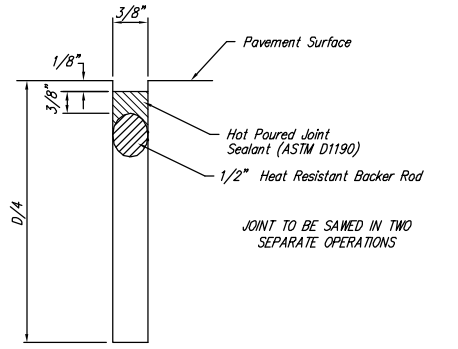


EXPANSION JOINT

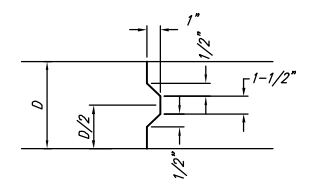
NOTE: Extra Thickness to be Subsidiary to Price of Square Yards Pavement



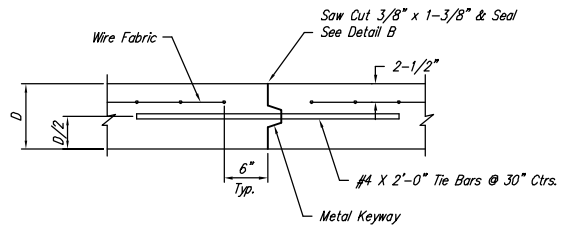
LONGITUDINAL JOINT DETAIL (L.J.)



SAW JOINT DETAIL "B"

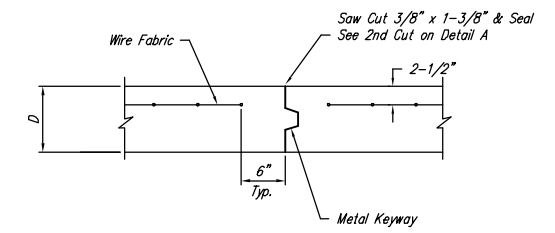


KEYWAY DETAIL

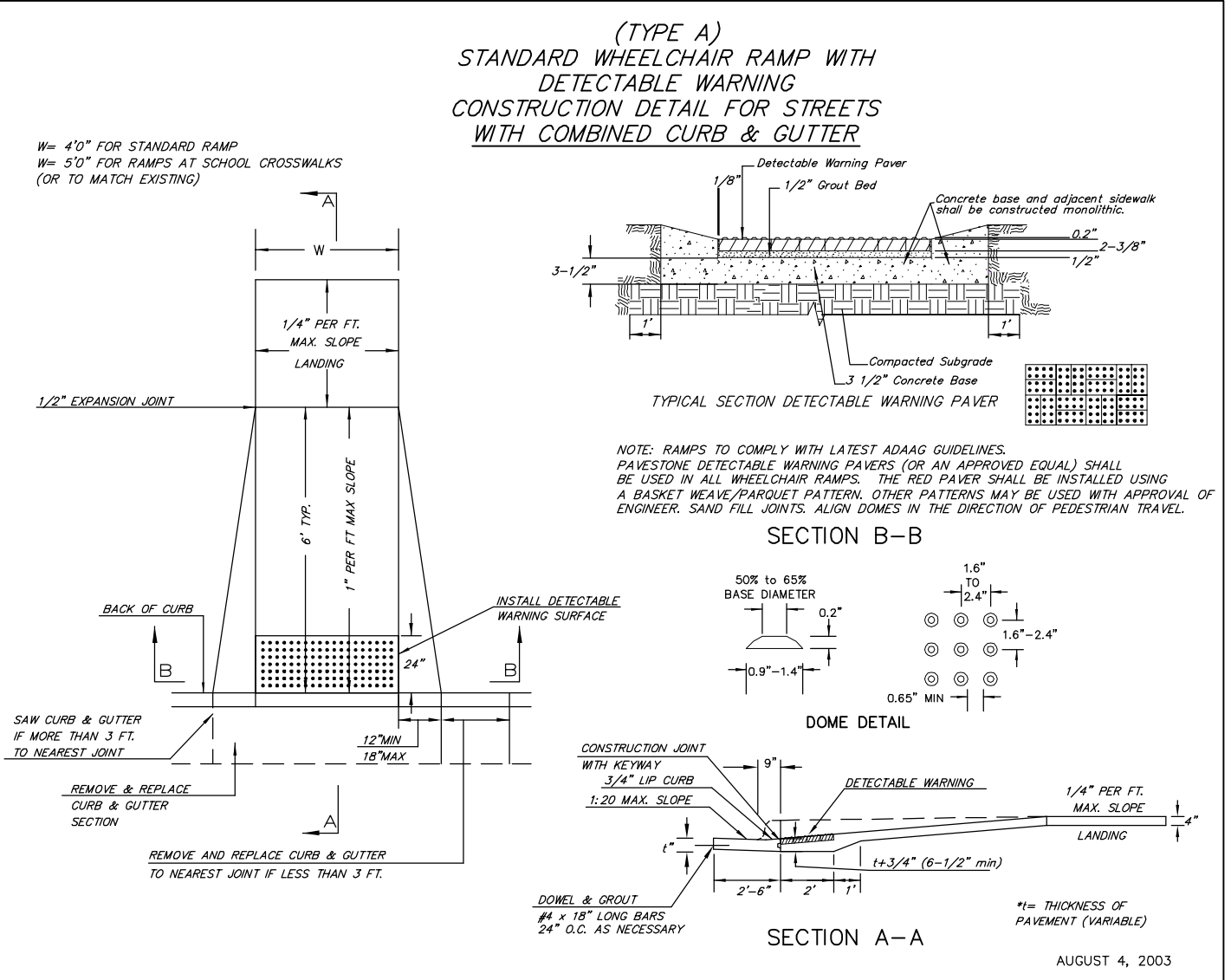


OPTIONAL LONGITUDINAL JOINT DETAIL (L.J.)
(CONSTRUCTION JOINT)

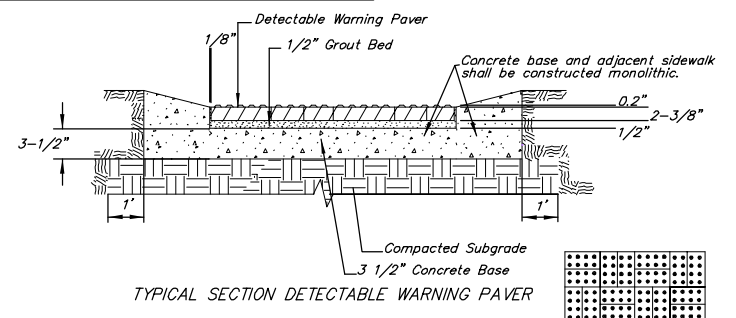
NOTE: 6" X 12" W4XW4 Wire Fabric Reinforcing Shall be Placed So That The Wires With The 6" Spacing Will Run Parallel With The Longitudinal Joints.



OPTIONAL CONTRACTION JOINT
(CONSTRUCTION JOINT)

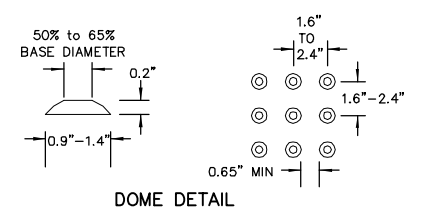


(TYPE A)
STANDARD WHEELCHAIR RAMP WITH
DETECTABLE WARNING
CONSTRUCTION DETAIL FOR STREETS
WITH COMBINED CURB & GUTTER

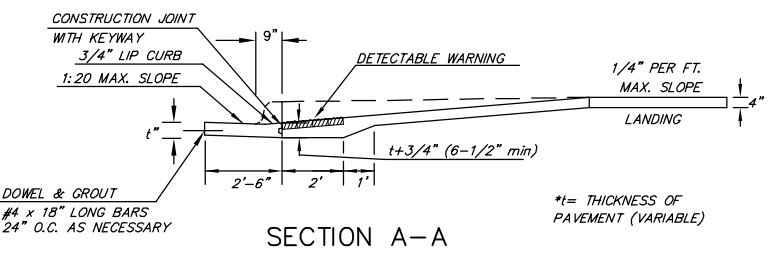


NOTE: RAMPS TO COMPLY WITH LATEST ADAAG GUIDELINES. PAVESTONE DETECTABLE WARNING PAVERS (OR AN APPROVED EQUAL) SHALL BE USED IN ALL WHEELCHAIR RAMPS. THE RED PAVER SHALL BE INSTALLED USING A BASKET WEAVE/PARQUET PATTERN. OTHER PATTERNS MAY BE USED WITH APPROVAL OF ENGINEER. SAND FILL JOINTS. ALIGN DOMES IN THE DIRECTION OF PEDESTRIAN TRAVEL.

SECTION B-B



DOME DETAIL



SECTION A-A

AUGUST 4, 2003

Drawing File: F:\eng\Old Town Drainage\Details\TypSec02.dwg

Design: TPV	Project No. 05-05-E258	CITY OF WICHITA, KANSAS
Drawn: TPV	TYPICAL PAVING SECTION & PAVEMENT DETAILS	
Approved: TPV	DOUGLAS AVENUE DRAINAGE OUTFALL PROJECT	
Scale: None		

	Baughman Company, P.A. 315 Ellis St. Wichita, KS 67211 P 316-262-7271 F 316-262-0149 ENGINEERING SURVEYING PLANNING LANDSCAPE ARCHITECTURE	July 2007 SHEET 47 OF 87
--	---	--