

MH # 5650-228  
Replace Manhole Frame & Cover  
Remove & Replace MH Bench & Invert  
Approx depth = 8.1 ft

MH # 5650-229  
Replace Manhole Frame & Cover  
Remove & Replace MH Bench & Invert  
Approx depth = 10.0 ft

MH # 5650-230  
Replace Manhole Frame & Cover  
Approx depth = 8.0 ft

Remove & Replace 297 lf of 8" Pipe  
from MH 5650-230 to MH 5650-227

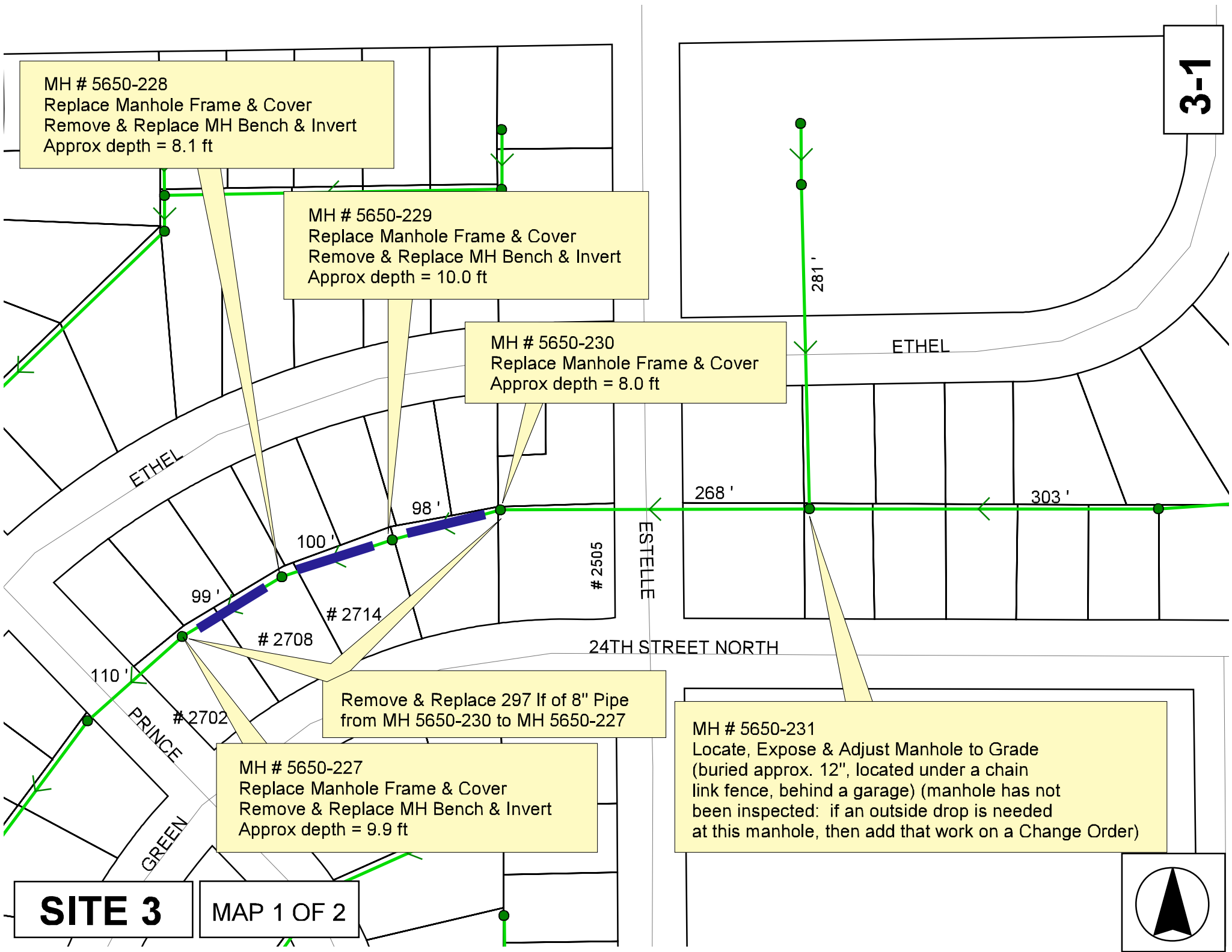
MH # 5650-227  
Replace Manhole Frame & Cover  
Remove & Replace MH Bench & Invert  
Approx depth = 9.9 ft

MH # 5650-231  
Locate, Expose & Adjust Manhole to Grade  
(buried approx. 12", located under a chain  
link fence, behind a garage) (manhole has not  
been inspected: if an outside drop is needed  
at this manhole, then add that work on a Change Order)

**SITE 3**

MAP 1 OF 2

**3-1**



MH # 5650-226  
Replace Manhole Frame & Cover  
Approx depth = 12.0 ft

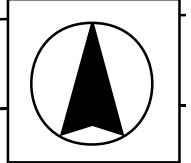
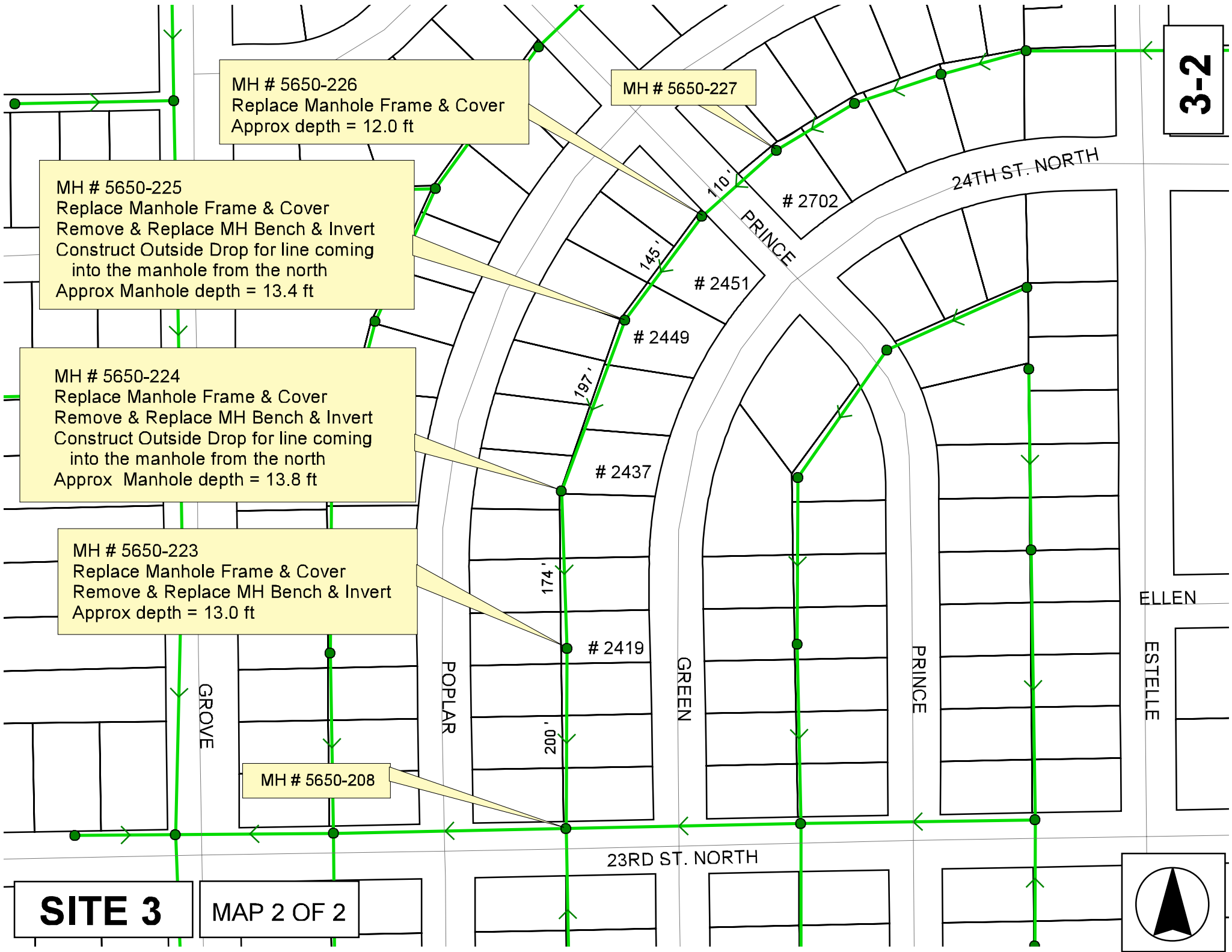
MH # 5650-227

MH # 5650-225  
Replace Manhole Frame & Cover  
Remove & Replace MH Bench & Invert  
Construct Outside Drop for line coming  
into the manhole from the north  
Approx Manhole depth = 13.4 ft

MH # 5650-224  
Replace Manhole Frame & Cover  
Remove & Replace MH Bench & Invert  
Construct Outside Drop for line coming  
into the manhole from the north  
Approx Manhole depth = 13.8 ft

MH # 5650-223  
Replace Manhole Frame & Cover  
Remove & Replace MH Bench & Invert  
Approx depth = 13.0 ft

MH # 5650-208





# Television Inspection Master Report

5/29/2007  
8:48 AM

**US Structure:** 5650-230                      2505 N ESTELLE AVE                      **Date Insp:** 7/17/2006                      **Basin:** EC02D  
**DS Structure:** 5650-229                      2714 E 24TH ST                      **Dir Televised:** Upstream To Downstream

## Pipe Information

Shape: Round                      Length Status:                      Project No.: G-028  
Dia/Ht Width: 8                      0                      Material: VCP                      Index:  
Length: 98.0                      Slope: 0.398                      Surface:

## Inspection Information

Crew: 694                      Percent Full:                      Tape ID: DVD #0173  
Weather: Sunny                      Purpose: TV Existing Line  
Normal Flow                      Counter Start:

Obs. #	VTR Counter	Distance	Location	Description	Rating	Obsrvd (gpm)	Est. (gpm)	Ratings		
								Struct	Clean	Remain (gpm)
1		0.0	US Manhole	5650-230	1	0.000	0	0	0.000	
2		8.8		Broken Pipe	3	0.000	0	0	0.000	
3		11.5		Broken Pipe	4	0.000	0	0	0.000	
4		18.4		Broken Pipe	4	0.000	0	0	0.000	
5		21.2		Crack-Horizontal	3	0.000	0	0	0.000	
6		27.5	Joint	Roots	3	0.008	5	8	0.008	
7		28.5	North	Wye Service	4	0.000	0	0	0.000	
ROOTS 2739 EAST ETHEL										
8		31.1		Crack-Horizontal	3	0.000	0	0	0.000	
9		33.6		Broken Pipe	4	0.000	0	0	0.000	
Heavy silt in the line / water marks are ¾ up on the pipe										
10		36.5		Broken Pipe	4	0.000	0	0	0.000	
11		63.1	Start	Sag	2	0.000	2	0	0.000	
12		73.9	North	Break-In Conn	5	0.000	0	0	0.000	
2733 EAST ETHEL / Packed with Roots										
13		77.1	Camera Lens Submerged		4	0.000	10	0	0.000	
14		77.1	Camera Lens Emerged		2	0.000	2	0	0.000	
		81.0	South	Wye Service						
Can't see the address on the video screen										
15		85.3	Camera Lens Submerged		4	0.000	10	0	0.000	
16		87.3	Camera Lens Emerged		2	0.000	2	0	0.000	
17		91.7		Grease	4	0.000	0	10	0.000	
18		94.6	Camera Lens Submerged		4	0.000	10	0	0.000	
19		96.1		Stopped Inspection	5	0.000	0	0	0.000	

DUE TO ROOTS & BROKEN PIPE / camera cannot get into the downstream manhole

3-4

# Television Inspection Master Report

5/29/2007  
8:48 AM

US Structure: 5650-229      2714 E 24TH ST      Date Insp: 7/20/2006      Basin: EC02D  
 DS Structure: 5650-228      2708 E 24TH ST      Dir Televised: Upstream To Downstream

## Pipe Information

Shape: Round      Length Status:      Project No.: G-028  
 Dia/Ht Width: 8      0      Material: VCP      Index:  
 Length: 99.6      Slope: 0.400      Surface:

## Inspection Information

Crew: 694      Percent Full:      Tape ID: DVD #0176  
 Weather: Sunny      Purpose: TV Existing Line      Counter Start:  
 Surface Cond: Trees & Fences      Flow: Normal Flow      Counter Stop:

Obs. #	VTR Counter	Distance	Location	Description	Rating	Obsrvd (gpm)	Est. (gpm)	Ratings Struct	Clean	Remain (gpm)
1		0.0	US Manhole	5650-229	1	0.000	0.000	0	0	0.000
2		3.0		Broken Pipe / roots	3	0.010	0.010	60	0	0.010
3		6.0	(out of round)	Broken Pipe / roots	3	0.010	0.010	60	0	0.010
4		8.7		Crack-Horizontal	2	0.002	0.002	2	0	0.002
5		9.7	Joint	Roots	2	0.004	0.004	2	4	0.004
6		12.9	Joint	Roots	2	0.004	0.004	2	4	0.004
7		13.1		Broken Pipe	3	0.010	0.010	60	0	0.010
8		16.0		Broken Pipe	3	0.010	0.010	60	0	0.010
9		20.0	Joint	Roots	2	0.004	0.004	2	4	0.004
10		20.0		Broken Pipe	2	0.008	0.008	44	0	0.008
11		22.9		Crack-Horizontal	2	0.002	0.002	2	0	0.002
12		25.5		Broken Pipe	3	0.010	0.010	60	0	0.010
13		31.4		Broken Pipe	2	0.008	0.008	44	0	0.008
14		32.3	North	Break-In Conn	3	0.004	0.004	2	0	0.004
2727 E. ETHEL / PACKED WITH ROOTS										
15		34.8	Joint	Roots	3	0.008	0.008	5	8	0.008
16		34.8		Broken Pipe	2	0.008	0.008	44	0	0.008
17		41.2		Broken Pipe	3	0.010	0.010	60	0	0.010
18		43.6		Broken Pipe	3	0.010	0.010	60	0	0.010
19		47.2		Broken Pipe	3	0.010	0.010	60	0	0.010
20		50.7		Broken Pipe	2	0.008	0.008	44	0	0.008
21		54.0	Joint	Roots	3	0.008	0.008	5	8	0.008
22		75.3	Joint	Roots	3	0.008	0.008	5	8	0.008
23		76.6	South	Wye Service	2	0.000	0.000	0	0	0.000
2714 E 24TH ST N										
24		82.3	North	Break-In Conn	2	0.002	0.002	0	0	0.002
2721 E. ETHEL / PVC										
25		95.5	Camera Lens Submerged	Sag	4	0.000	0.000	10	0	0.000
26		96.3		Broken Pipe	3	0.010	0.010	60	0	0.010
27		96.3		Collapsed Pipe	4	0.050	0.050	200	0	0.050
28		96.3		Stopped Inspection	4	0.000	0.000	0	0	0.000

DUE TO ROOTS & BROKEN PIPE / camera cannot get into the downstream manhole

3-5

# Television Inspection Master Report

5/29/2007  
8:48 AM

US Structure: 5650-228                      2708 E 24TH ST                      Date Insp: 7/20/2006                      Basin: EC02D  
DS Structure: 5650-227                      2702 E 24TH ST                      Dir Televised: Downstream To Upstream

## Pipe Information

Shape: Round                      Length Status:                      Project No.: G-028  
Dia/Ht Width: 8 0                      Material: VCP                      Index:  
Length: 99.2                      Slope: 0.404                      Surface:

## Inspection Information

Crew: 694                      Percent Full:                      Tape ID: DVD #0176  
Weather: Sunny                      Purpose: TV Existing Line  
Surface Cond:                      Flow: Normal Flow                      Counter Start:  
Counter Stop:

Obs. #	VTR Counter	Distance	Location	Description	Rating	Obsrvd (gpm)	Est. (gpm)	Ratings		
								Struct	Clean	Remain (gpm)
1		0.0	DS Manhole	5650-227 / TELEVISIONING AGAINST THE FLOW						
2		0.0	Broken pipe at manhole wall		4	0.000	0	0	0.000	
3		10.9		Crack-Horizontal	4	0.000	0	0	0.000	
4		12.6	South	Break-In Conn	1	0.000	0	0	0.000	
2702 EAST 24TH ST. NORTH										
5		12.7		Broken Pipe	3	0.000	0	0	0.000	
6		13.9		Broken Pipe	4	0.000	0	0	0.000	
7		16.2	North	Wye Service	4	0.000	0	0	0.000	
ROOTS 2709 EAST ETHEL										
8		19.8		Broken Pipe	3	0.000	0	0	0.000	
9		23.2		Broken Pipe	3	0.000	0	0	0.000	
10		26.3		Crack-Horizontal	4	0.000	0	0	0.000	
11		29.2		Broken Pipe	3	0.000	0	0	0.000	
12		32.2		Broken Pipe	3	0.000	0	0	0.000	
13		35.5		Broken Pipe	3	0.000	0	0	0.000	
14		38.5		Broken Pipe	3	0.000	0	0	0.000	
15		41.4		Broken Pipe	3	0.000	0	0	0.000	
16		43.9	South	Wye Service	1	0.000	0	0	0.000	
2708 EAST ETHEL										
17		54.1		Crack-Horizontal	3	0.000	0	0	0.000	
18		63.3		Broken Pipe	3	0.000	0	0	0.000	
19		68.7	North	Wye Service	2	0.000	0	0	0.000	
2715 EAST ETHEL										
20		81.4		Broken Pipe	3	0.000	0	0	0.000	
21		84.4		Broken Pipe	3	0.000	0	0	0.000	
		96.0	Joint	Paper collects at this joint / offset						
22		99.9	US Manhole	5650-228	1	0.000	0	0	0.000	