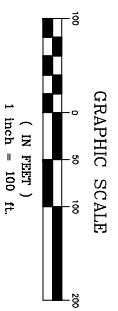
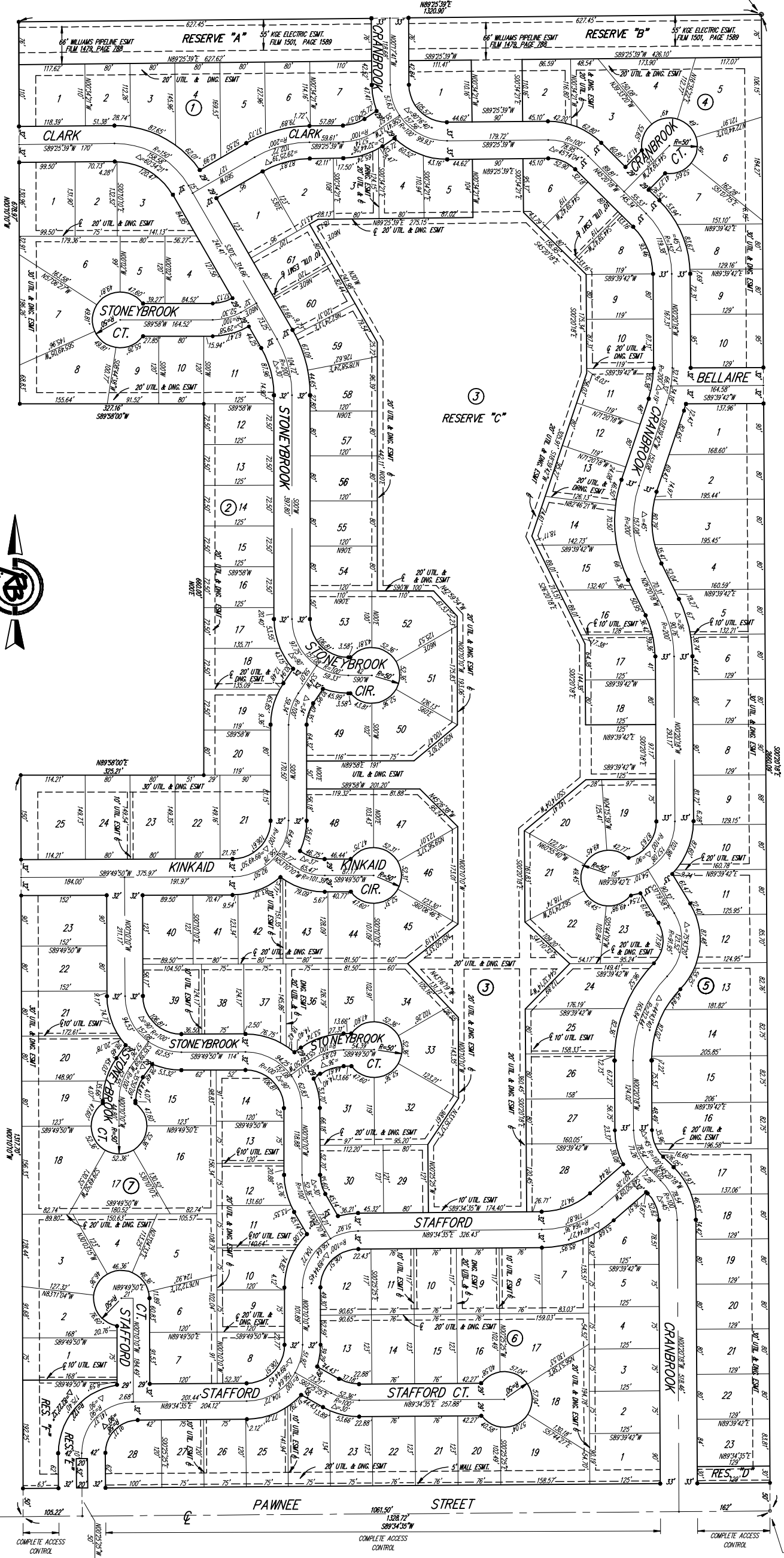


BRENTWOOD SOUTH ADDITION

WICHITA, SEDGWICK COUNTY, KANSAS

N.E. COR SW1/4
SEC. 33-275-2E



Please contact Western Resources (or its successor) Electric Transmission Engineering Department (currently 785-575-8219) before conducting any proposed construction activities that could place people, equipment, or facilities within Western Resources' easement, shown on this plat, designated as Film 1501, Page 1589, dated December 29, 1994.

- △ - CITY OF WICHITA CONTROL (HARVEST (ROUND))
- - 1/2" REBAR W/ANCHOR CAP (ROUND)
- - 3/8" REBAR (ROUND)
- - 1/2" REBAR W/ANCHOR CAP (S1)

MINIMUM BUILDING PAD ELEVATION FOR LOWEST OPENING INTO STRUCTURES	LOT NO.	ELEVATION (N.C.I.D.)
3	Lots 1-20, 47 Lots 50-61	1389

RECORD MAP#1: LOSS BRASS FLAG 28" S & S30" W
OF CENTERLINE INTERSECTION OF CLARK & PAWNEE
ELEV. = 1382.25 MVD
RECORD MAP# 49: CITY OF WICHITA STD. JST.
20' W & S45° S OF CENTERLINE INTERSECTION
PAWNEE & PAWNEE
ELEV. = 1379.60

**Brentwood South Addition
FINAL PLAT
WICHITA, KANSAS**

Sanitary Final Plat#	466-84263
KML	286
MJP	14
Dec. 12, 2006	14