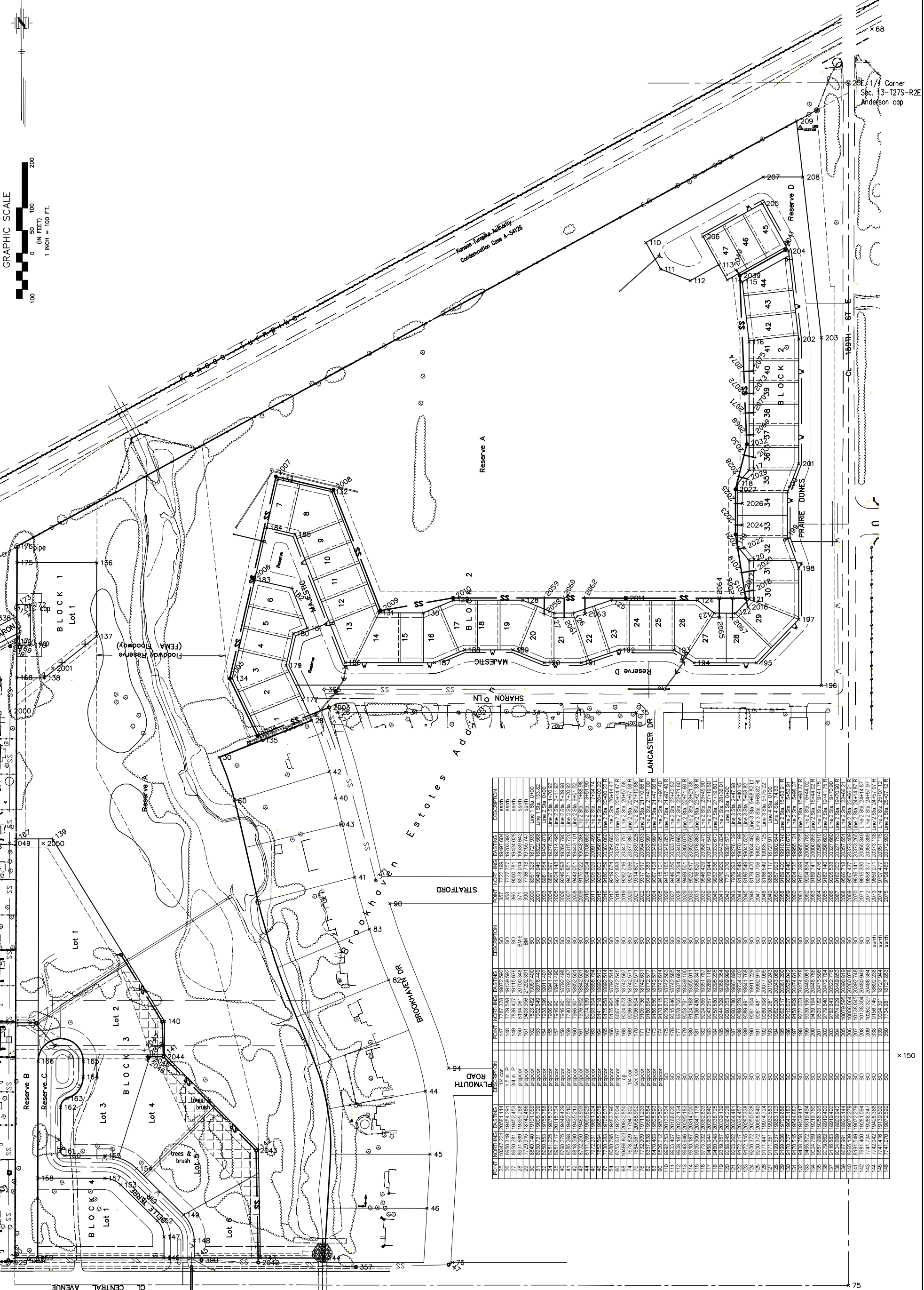




No.	Date	By	Approved	Revision



POINT	NORTHING	EASTING	DESCRIPTION	POINT	NORTHING	EASTING	DESCRIPTION
25	10347.231	20031.114	14.0 cor	367	1752.189	19497.604	ssm
26	8890.319	19454.291	1.9 in. P	368	779.588	19139.992	SO
27	8890.281	19462.453	34 in. P	369	900.781	19242.028	ssm
28	7729.915	18742.246	BM	370	113.713	19155.742	ssm
29	7729.915	18742.246	BM	371	778.713	19155.742	ssm
30	8649.740	19191.059	prop/cor	2000	8691.323	18727.935	Line 1 Ssb. 1000
31	8890.731	19005.029	prop/cor	2001	906.945	18627.668	Line 1 Ssb. 133.82
32	8890.731	19005.029	prop/cor	2002	906.945	18627.668	Line 1 Ssb. 133.82
33	8890.731	19005.029	prop/cor	2003	906.945	18627.668	Line 1 Ssb. 133.82
34	8890.731	19005.029	prop/cor	2004	906.945	18627.668	Line 1 Ssb. 133.82
35	8890.731	19005.029	prop/cor	2005	906.945	18627.668	Line 1 Ssb. 133.82
36	8890.731	19005.029	prop/cor	2006	906.945	18627.668	Line 1 Ssb. 133.82
37	8890.731	19005.029	prop/cor	2007	906.945	18627.668	Line 1 Ssb. 133.82
38	8890.731	19005.029	prop/cor	2008	906.945	18627.668	Line 1 Ssb. 133.82
39	8890.731	19005.029	prop/cor	2009	906.945	18627.668	Line 1 Ssb. 133.82
40	8769.275	19449.429	prop/cor	2010	924.538	19364.796	Line 2 Ssb. 5-39.98
41	8890.731	19482.210	prop/cor	2011	947.851	19315.720	Line 2 Ssb. 7-70.92
42	8890.731	19482.210	prop/cor	2012	947.851	19315.720	Line 2 Ssb. 7-70.92
43	8890.731	19482.210	prop/cor	2013	947.851	19315.720	Line 2 Ssb. 7-70.92
44	8890.731	19482.210	prop/cor	2014	947.851	19315.720	Line 2 Ssb. 7-70.92
45	8702.250	18463.563	prop/cor	2015	974.522	19248.286	Line 2 Ssb. 11-38.35
46	8111.769	18600.029	prop/cor	2016	974.522	19248.286	Line 2 Ssb. 11-38.35
47	8111.769	18600.029	prop/cor	2017	974.522	19248.286	Line 2 Ssb. 11-38.35
48	8111.769	18600.029	prop/cor	2018	974.522	19248.286	Line 2 Ssb. 11-38.35
49	8111.769	18600.029	prop/cor	2019	974.522	19248.286	Line 2 Ssb. 11-38.35
50	8111.769	18600.029	prop/cor	2020	974.522	19248.286	Line 2 Ssb. 11-38.35
51	8111.769	18600.029	prop/cor	2021	974.522	19248.286	Line 2 Ssb. 11-38.35
52	8111.769	18600.029	prop/cor	2022	974.522	19248.286	Line 2 Ssb. 11-38.35
53	8111.769	18600.029	prop/cor	2023	974.522	19248.286	Line 2 Ssb. 11-38.35
54	8111.769	18600.029	prop/cor	2024	974.522	19248.286	Line 2 Ssb. 11-38.35
55	8111.769	18600.029	prop/cor	2025	974.522	19248.286	Line 2 Ssb. 11-38.35
56	8111.769	18600.029	prop/cor	2026	974.522	19248.286	Line 2 Ssb. 11-38.35
57	8111.769	18600.029	prop/cor	2027	974.522	19248.286	Line 2 Ssb. 11-38.35
58	8111.769	18600.029	prop/cor	2028	974.522	19248.286	Line 2 Ssb. 11-38.35
59	8111.769	18600.029	prop/cor	2029	974.522	19248.286	Line 2 Ssb. 11-38.35
60	8111.769	18600.029	prop/cor	2030	974.522	19248.286	Line 2 Ssb. 11-38.35
61	8111.769	18600.029	prop/cor	2031	974.522	19248.286	Line 2 Ssb. 11-38.35
62	8111.769	18600.029	prop/cor	2032	974.522	19248.286	Line 2 Ssb. 11-38.35
63	8111.769	18600.029	prop/cor	2033	974.522	19248.286	Line 2 Ssb. 11-38.35
64	8111.769	18600.029	prop/cor	2034	974.522	19248.286	Line 2 Ssb. 11-38.35
65	8111.769	18600.029	prop/cor	2035	974.522	19248.286	Line 2 Ssb. 11-38.35
66	8111.769	18600.029	prop/cor	2036	974.522	19248.286	Line 2 Ssb. 11-38.35
67	8111.769	18600.029	prop/cor	2037	974.522	19248.286	Line 2 Ssb. 11-38.35
68	8111.769	18600.029	prop/cor	2038	974.522	19248.286	Line 2 Ssb. 11-38.35
69	8111.769	18600.029	prop/cor	2039	974.522	19248.286	Line 2 Ssb. 11-38.35
70	8111.769	18600.029	prop/cor	2040	974.522	19248.286	Line 2 Ssb. 11-38.35
71	8111.769	18600.029	prop/cor	2041	974.522	19248.286	Line 2 Ssb. 11-38.35
72	8111.769	18600.029	prop/cor	2042	974.522	19248.286	Line 2 Ssb. 11-38.35
73	8111.769	18600.029	prop/cor	2043	974.522	19248.286	Line 2 Ssb. 11-38.35
74	8111.769	18600.029	prop/cor	2044	974.522	19248.286	Line 2 Ssb. 11-38.35
75	8111.769	18600.029	prop/cor	2045	974.522	19248.286	Line 2 Ssb. 11-38.35
76	7732.909	19711.203	prop/cor	2046	974.522	19248.286	Line 2 Ssb. 11-38.35
77	7732.909	19711.203	prop/cor	2047	974.522	19248.286	Line 2 Ssb. 11-38.35
78	7732.909	19711.203	prop/cor	2048	974.522	19248.286	Line 2 Ssb. 11-38.35
79	7732.909	19711.203	prop/cor	2049	974.522	19248.286	Line 2 Ssb. 11-38.35
80	7732.909	19711.203	prop/cor	2050	974.522	19248.286	Line 2 Ssb. 11-38.35
81	7732.909	19711.203	prop/cor	2051	974.522	19248.286	Line 2 Ssb. 11-38.35
82	8397.838	19568.884	prop/cor	2052	967.383	20333.897	Line 2 Ssb. 21-47.00
83	8397.838	19568.884	prop/cor	2053	967.383	20333.897	Line 2 Ssb. 21-47.00
84	8397.838	19568.884	prop/cor	2054	967.383	20333.897	Line 2 Ssb. 21-47.00
85	8397.838	19568.884	prop/cor	2055	967.383	20333.897	Line 2 Ssb. 21-47.00
86	8397.838	19568.884	prop/cor	2056	967.383	20333.897	Line 2 Ssb. 21-47.00
87	8397.838	19568.884	prop/cor	2057	967.383	20333.897	Line 2 Ssb. 21-47.00
88	8397.838	19568.884	prop/cor	2058	967.383	20333.897	Line 2 Ssb. 21-47.00
89	8397.838	19568.884	prop/cor	2059	967.383	20333.897	Line 2 Ssb. 21-47.00
90	8397.838	19568.884	prop/cor	2060	967.383	20333.897	Line 2 Ssb. 21-47.00
91	8397.838	19568.884	prop/cor	2061	967.383	20333.897	Line 2 Ssb. 21-47.00
92	8397.838	19568.884	prop/cor	2062	967.383	20333.897	Line 2 Ssb. 21-47.00
93	8397.838	19568.884	prop/cor	2063	967.383	20333.897	Line 2 Ssb. 21-47.00
94	8397.838	19568.884	prop/cor	2064	967.383	20333.897	Line 2 Ssb. 21-47.00
95	8397.838	19568.884	prop/cor	2065	967.383	20333.897	Line 2 Ssb. 21-47.00
96	8397.838	19568.884	prop/cor	2066	967.383	20333.897	Line 2 Ssb. 21-47.00
97	8397.838	19568.884	prop/cor	2067	967.383	20333.897	Line 2 Ssb. 21-47.00
98	8397.838	19568.884	prop/cor	2068	967.383	20333.897	Line 2 Ssb. 21-47.00
99	8397.838	19568.884	prop/cor	2069	967.383	20333.897	Line 2 Ssb. 21-47.00
100	8397.838	19568.884	prop/cor	2070	967.383	20333.897	Line 2 Ssb. 21-47.00
101	8397.838	19568.884	prop/cor	2071	967.383	20333.897	Line 2 Ssb. 21-47.00
102	8397.838	19568.884	prop/cor	2072	967.383	20333.897	Line 2 Ssb. 21-47.00
103	8397.838	19568.884	prop/cor	2073	967.383	20333.897	Line 2 Ssb. 21-47.00
104	8397.838	19568.884	prop/cor	2074	967.383	20333.897	Line 2 Ssb. 21-47.00
105	8397.838	19568.884	prop/cor	2075	967.383	20333.897	Line 2 Ssb. 21-47.00
106	8397.838	19568.884	prop/cor	2076	967.383	20333.897	Line 2 Ssb. 21-47.00
107	8397.838	19568.884	prop/cor	2077	967.383	20333.897	Line 2 Ssb. 21-47.00
108	8397.838	19568.884	prop/cor	2078	967.383	20333.897	Line 2 Ssb. 21-47.00
109	8397.838	19568.884	prop/cor	2079	967.383	20333.897	Line 2 Ssb. 21-47.00
110	8397.838	19568.884	prop/cor	2080	967.383	20333.897	Line 2 Ssb. 21-47.00
111	8397.838	19568.884	prop/cor	2081	967.383	20333.897	Line 2 Ssb. 21-47.00
112	8397.838	19568.884	prop/cor	2082	967.383	20333.897	Line 2 Ssb. 21-47.00
113	8397.838	19568.884	prop/cor	2083	967.383	20333.897	Line 2 Ssb. 21-47.00
114	8397.838	19568.884	prop/cor	2084	967.383	20333.897	Line 2 Ssb. 21-47.00
115	8397.838	19568.884	prop/cor	2085	967.383	20333.897	Line 2 Ssb. 21-47.00
116	8397.838	19568.884	prop/cor	2086	967.383	20333.897	Line 2 Ssb. 21-47.00
117	8397.838	19568.884	prop/cor	2087	967.383	20333.897	Line 2 Ssb. 21-47.00
118	8397.838	19568.884	prop/cor	2088	967.383	20333.897	Line 2 Ssb. 21-47.00
119	8397.838	19568.884	prop/cor	2089	967.383	20333.897	Line 2 Ssb. 21-47.00
120	8397.838	19568.884	prop/cor	2090	967.383	20333.897	Line 2 Ssb. 21-47.00
121	8397.838	19568.884	prop/cor	2091	967.383	20333.897	Line 2 Ssb. 21-47.00
122	8397.838	19568.884	prop/cor	2092	967.383	20333.897	Line 2 Ssb. 21-47.00
123	8397.838	19568.884	prop/cor	2093	967.383	20333.897	Line 2 Ssb. 21-47.00
124	8397.838	19568.884	prop/cor	2094	967.383	20333.897	Line 2 Ssb. 21-47.00
125	8397.838	19568.884	prop/cor	2095	967.383	20333.897	Line 2 Ssb. 21-47.00
126	8397.838	19568.884	prop/cor	2096	967.383	20333.897	Line 2 Ssb. 21-47.00
127	8397.838	19568.884	prop/cor	2097	967.383	20333.897	Line 2 Ssb. 21-47.00