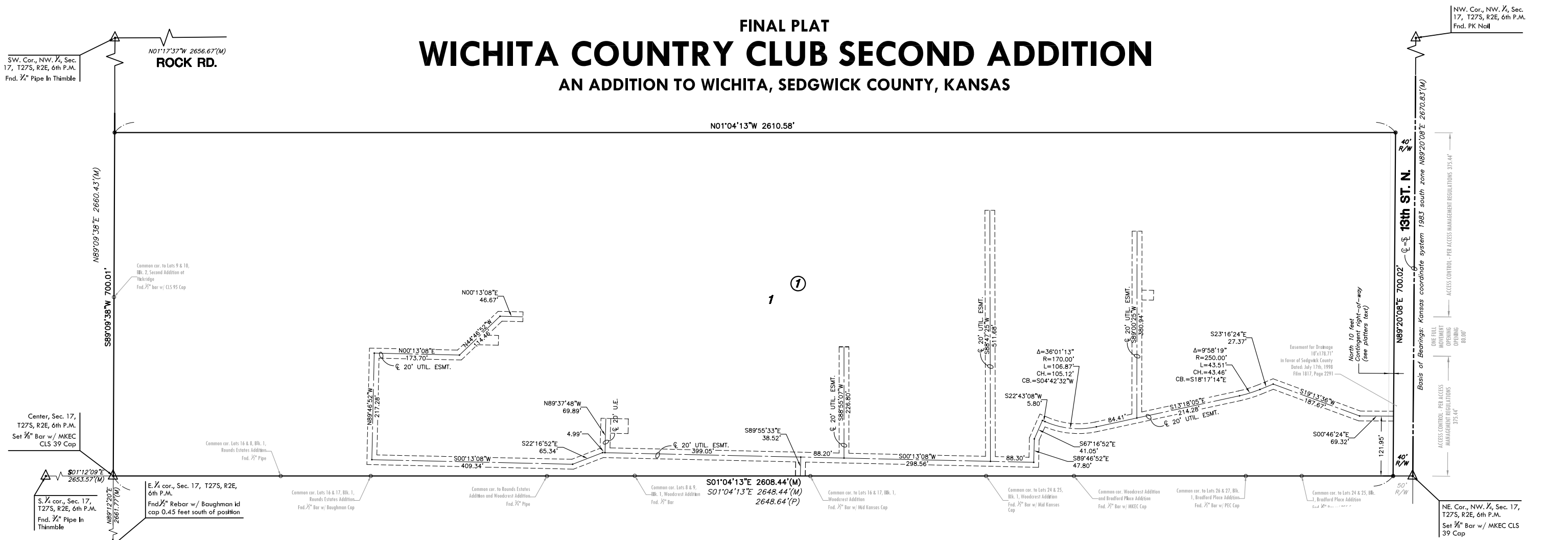


FINAL PLAT

WICHITA COUNTRY CLUB SECOND ADDITION

AN ADDITION TO WICHITA, SEDGWICK COUNTY, KANSAS



CERTIFICATE OF SURVEY

I, Gregory J. Allison, a registered land surveyor in Kansas, do hereby certify that I have been in responsible charge of surveying and platting of "WICHITA COUNTRY CLUB SECOND ADDITION", an addition to Wichita, Sedgwick County, Kansas, into a Lot, and a Block, the same being accurately set forth in the accompanying plat and described herein:

The East 700 feet of the Northwest Quarter, Section 17, Township 27 South, Range 2 West, of the 6th Prime Meridian, Wichita, Sedgwick County, Kansas, EXCEPT, the North 40 feet.

All reserves, streets, utility easements, building setbacks, access controls, together with, that portion of an easement for drainage recorded on Film 1817, Page 2291, together with, any and all public dedications within the above described property are hereby vacated and replatted by virtue of K.S.A. 12-512(b).

I hereby certify that the details of this plat are correct to the best of my knowledge and belief this ____ day of _____, 2007.



Gregory J. Allison, PE, LS #1257
MKEC Engineering Consultants, Inc.
411 North Webb Road
Wichita, Kansas 67206

Know all men by these presents that we the undersigned property owners of the land above set forth in the Registered Land Surveyor's Certificate, have caused the same to be surveyed and platted into a Lot, and a Block the same to be known as "WICHITA COUNTRY CLUB SECOND ADDITION," an addition to Wichita, Sedgwick County, Kansas. Easements for the construction and maintenance of public utilities, as indicated on the accompanying plat are hereby granted to the public. The access controls are hereby dedicated to and for the use of the public. All abutters right to access to or from east 13th Street over and across the north line of "WICHITA COUNTRY CLUB SECOND ADDITION," are hereby granted to the appropriate governing body, as indicated hereon. A drainage plan has been developed for this plat. All drainage easements, rights-of-way, and reserves shall remain at established grades or as modified with the approval of the applicable City or County Engineer, and unobstructed to allow for the conveyance of storm water. The north ten feet of Lot 1, Block 1, is contingently dedicated for right-of-way. Said north ten feet shall become effective in the event that the City of Wichita determines a need for the right-of-way for any street-related purpose. The existing wall, fencing, gates, landscaping, irrigation, trees, and berming shall be replaced at the cost of the City of Wichita, should any of which be damaged, obliterated, or the need to be relocated due to the street-related improvement.

OWNER'S CERTIFICATE

WICHITA COUNTRY CLUB ASSOCIATION

_____, Chief Executive Officer
Cary J. Cozby, Chief Executive Officer

STATE OF KANSAS, SEDGWICK COUNTY} ss:

This instrument was acknowledged before me on this ____ day of _____, 2007, Cary J. Cozby, Chief Executive Officer, Wichita Country Club Association.

IN WITNESS WHEREOF, I have hereunto set my hand and affixed my official seal, the day and year last above written.

_____, Notary Public
My Term Expires: _____

MORTGAGE CERTIFICATE

We, Bank of America, N.A. holders of a mortgage on a portion of the above described property, do hereby consent to the plat of "WICHITA COUNTRY CLUB SECOND ADDITION."

BANK OF AMERICA, N.A.

_____, Vice President
Andrea Andersen Scarpelli, Vice President

STATE OF KANSAS, SEDGWICK COUNTY} ss:

This instrument was acknowledged before me on this ____ day of _____, 2007, by Andrea Andersen Scarpelli, Vice President, Bank of America, N.A.

IN WITNESS WHEREOF, I have hereunto set my hand and affixed my official seal, the day and year last above written.

_____, Notary Public
My Term Expires: _____

PLANNING COMMISSION CERTIFICATE

This plat of "WICHITA COUNTRY CLUB SECOND ADDITION" has been submitted to and approved by the Wichita-Sedgwick County Metropolitan Area Planning Commission, Wichita, Kansas.

Dated this ____ day of _____, 2007

WICHITA-SEDGWICK COUNTY METROPOLITAN AREA PLANNING COMMISSION

_____, Chair
Darrell A. Downing, Chair

Affest: _____, Secretary
John L. Schlegel, Secretary

GOVERNING BODY CERTIFICATE

The dedications shown on this plat are hereby accepted and this plat is hereby approved by the governing body of the City of Wichita, Kansas.

Dated this ____ day of _____, 2007

At the direction of the City Council.

_____, Mayor
Carlos Mayans, Mayor

Affest: _____, City Clerk
Karen Sublett, City Clerk

TRANSFER RECORD

STATE OF KANSAS, SEDGWICK COUNTY} ss:

Entered on transfer record this ____ day of _____, 2007

_____, County Clerk
Don Brace, County Clerk

REGISTER OF DEEDS CERTIFICATE

This is to certify that this instrument was filed for record in the Register of Deeds office this ____ day of _____, 2007, at _____ o'clock _____, and is duly recorded.

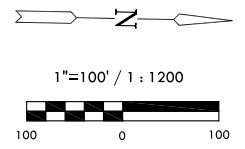
_____, Register of Deeds
Bill Meek, Register of Deeds

Affest: _____, Deputy
Tonya E. Buckingham, Deputy

COUNTY SURVEYOR

Reviewed in accordance with K.S.A. 58-2005 on this ____ day of _____, 2007.

_____, Deputy County Surveyor
Tricia L. Robello, LS #1246
Deputy County Surveyor
Sedgwick County, Kansas



Basis of Bearings: Kansas coordinate system 1983 south zone bearing of N89°20'08"33"E along the N. Line of NW 1/4, Sec. 17, T27S, R2E, 6th P.M.

LEGEND

- Date of Survey: January, 2007
- ▲ = Section Corner Monument Found
 - ⊙ = Found monument see annotation
 - = Set 3/8" Rebar w/ MKEC CLS 39 id. cap
 - (M) = Measured
 - (P) = Platted



J:\Civil\070326\Draw\Prop\070326a.dwg 3/27/2007 8:55:08 AM CDT