

# Street Paving for Blackstone with Incidental SWS Improvements

to serve

## BLACKSTONE ADDITION - PHASE I

Blackstone: From the North Line of 13th St. N., North to the South Line of Lot 1, Block B

Price: From Obsidian to the West Line of Blackstone

Obsidian, and Obsidian Ct.: From the North Line of Lot 4, Block D, West to and Including the Cul-de-sac

Price: From the East Line of Blackstone, East to the East Line of the Plat

### CITY OF WICHITA, KANSAS

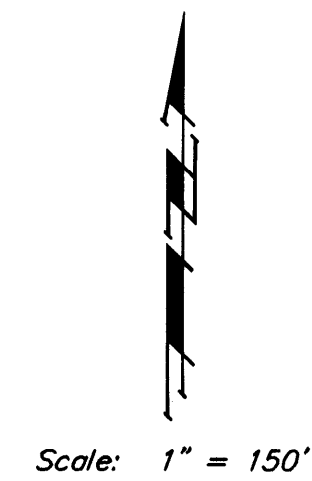
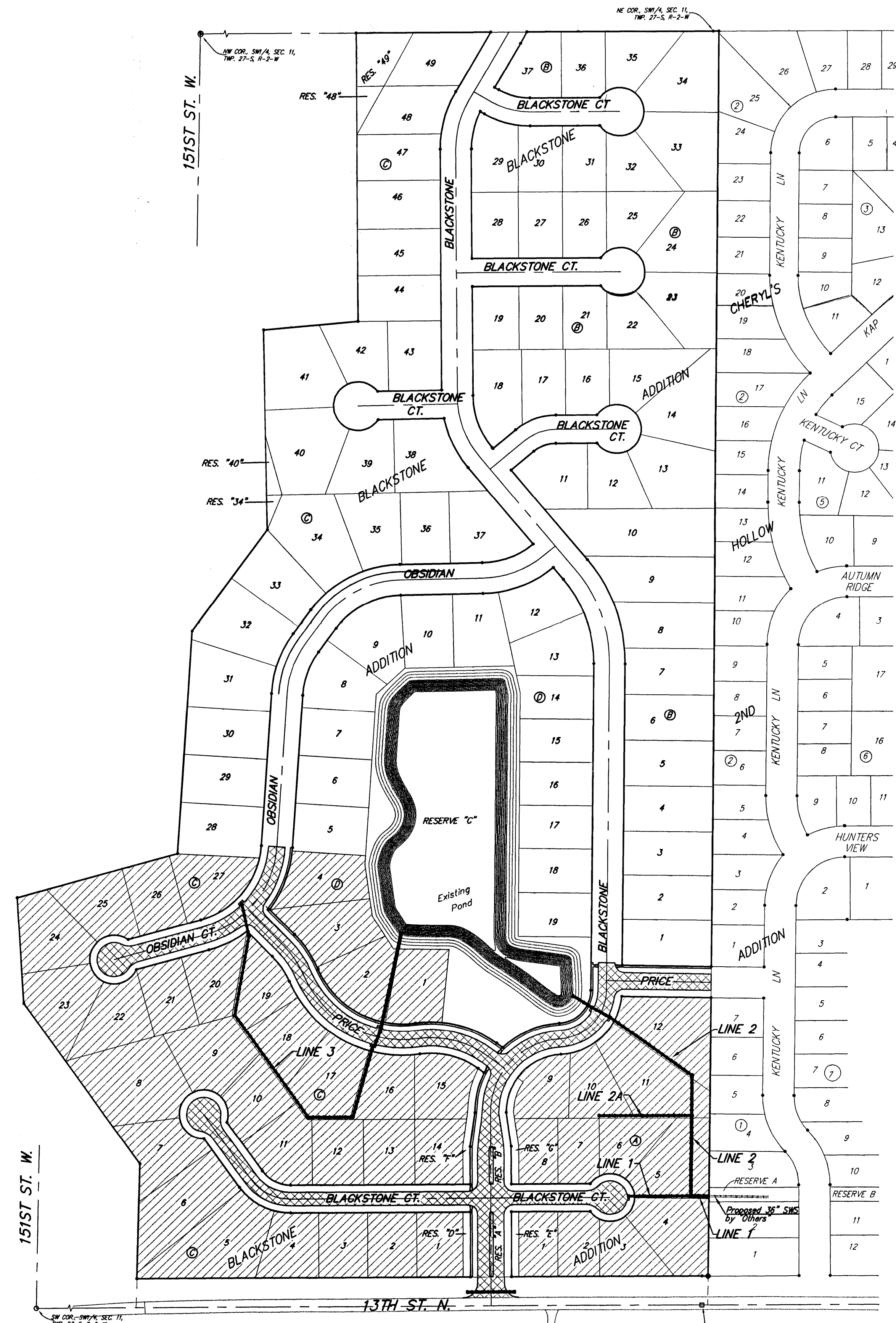
James L. Armour, P.E. City Engineer

Project Number

472-84397

O.C.A. Number

766151



### GENERAL NOTES:

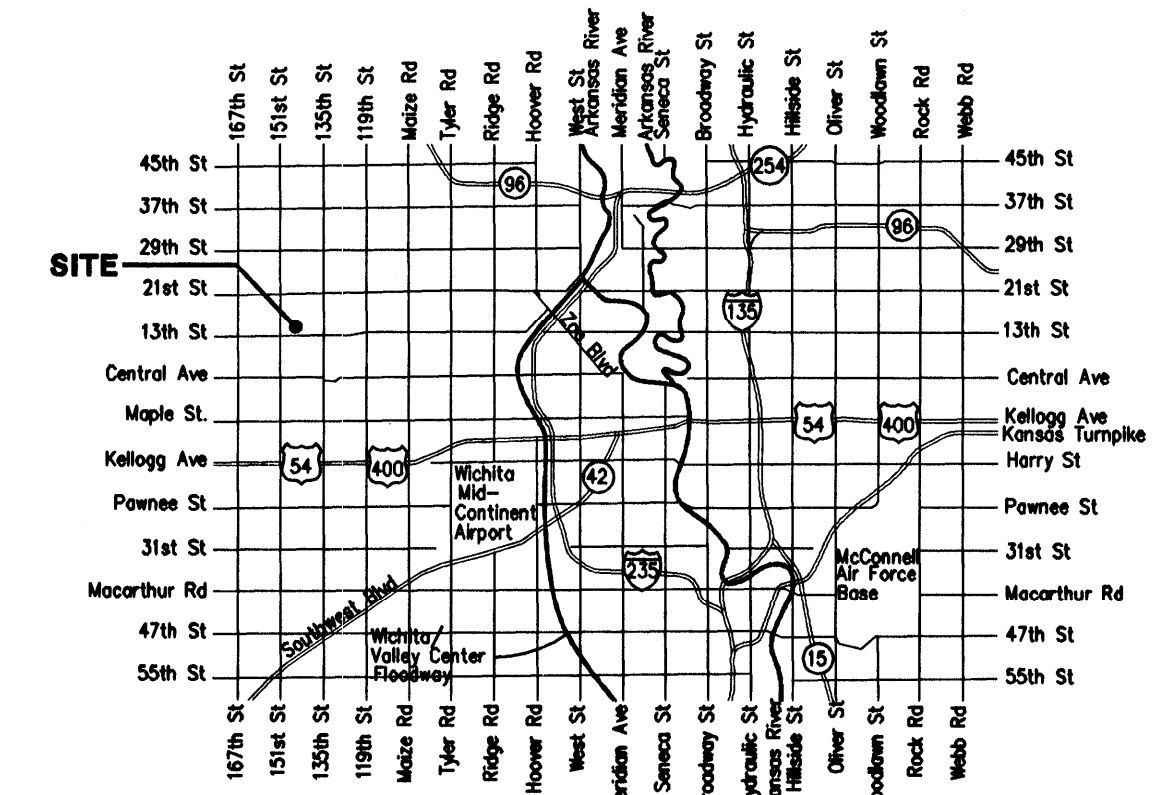
- Contractor will be required to provide notice to utility companies a minimum of forty-eight (48) hours prior to any excavation, as follows:  
 Kansas One-Call 687-2470  
 The Contractor must notify the following in case of an emergency:  
 Cox Communications 262-4270  
 Kansas Gas Service 1-888-482-4850  
 Westar Energy 353-8550  
 Aquila Energy 1-800-303-0357  
 SBC 268-2245  
 City of Wichita Water Dept. 268-4563  
 City of Wichita Sewer Maint. 268-4024  
 City of Wichita Storm Sewer Maint. 268-4090  
 City of Wichita Traffic Maint. 268-4034  
 Conoco Phillips Pipeline Co. 1-877-267-2290  
 Southern Star Pipeline Co. 529-6600  
 Kinder-Morgan Pipeline Co. 1-888-844-5658
- Utility service lines, poles, valve boxes, meters, and etcetera are to be adjusted as necessary by others prior to construction unless the plans specifically call for their adjustment by the Contractor or unless the plans specifically identify a utility to be adjusted by its owner during construction. Existing utilities and their location, as shown on the plans, represent the best information obtainable for design. The Contractor will be required to work around existing utilities within the right-of-way which do not conflict with proposed construction.
- Rubble from the removal of miscellaneous structures and excess excavation which is to be wasted shall be disposed of on sites to be provided by the Contractor. These sites shall be approved by the Engineer as to suitability, appearance and site location. Locations, in the opinion of the Engineer, that will leave an unsightly appearance will not be approved. All disposal sites must be approved by the Kansas Department of Health and Environment. Material either stockpiled or disposed of in a flood plain would require a Kansas State Board of Agriculture permit. Any material dumped in waters of the United States or wetlands is subject to U.S. Corps of Engineers permitting regulations. Any material buried or stockpiled beyond approved construction limits would require additional archaeological investigations unless buried in a previously approved borrow location.
- Trees and shrubs in public right-of-way which are in direct conflict with proposed new construction shall be removed by the Contractor with the Engineer's approval. Trees and shrubs which are not in direct conflict with proposed new construction shall be saved and protected from damage.
- The Contractor shall give all property owners and/or tenants of developed property abutting the construction of this project a minimum of ten (10) days notice prior to start of construction.
- The Contractor shall be responsible for preserving property irons. The Contractor will be required to re-establish any property irons which are damaged or destroyed by his construction operations. Such irons shall be re-established by a licensed land surveyor in accordance with state laws.
- All excess excavation shall remain on-site and shall be spread evenly on the lots outside of easements & R/W's
- All existing and proposed erosion control measures including silt fencing, erosion control mat, straw bales, inlet barriers, and canal entrance shall be maintained throughout construction by the contractor and until project is accepted by the City of Wichita. The on-site engineer shall complete weekly reports on the status of erosion control measures. The contractor shall be required to comply with maintenance and/or replacement of erosion control measures as determined by the on-site engineer until project is accepted by City of Wichita.  
 Seed: Kansas Premium Fescue Blend: 8 lbs./1000 sq. ft.  
 Mulch: Prairie Hay: 2 tons/acre  
 Fertilizer: 12-24-12: 850 lbs./acre

### Sheet Index

Title Sheet	1
35' Pavement Detail	2
29' Pavement Detail	3
Sign Detail	4
Miscellaneous Details	5
Entrance Detail	6
Blackstone	7-8
Blackstone Ct. (Lots 1-14, Block C)	9-10
Blackstone Ct. (Lots 1-8, Block A)	11
Price	12-14
Obsidian Ct. / Obsidian	15
SWS Line 1	16
SWS Line 2	17-18
SWS Line 2A	19
SWS Line 3	20-21
Std. Type 1A Double Inlet Detail	22
Std. Type 1A Single Inlet Detail	23
Shallow Manhole Detail	24
Ring & Cover Detail	25
Special Yard Inlet Detail	26
Standard Drop Inlet Detail	27
Headwall Detail	28
Erosion Control/Esmt. Grading Plan	29-30
Erosion Control BMP Details	31-34
Coordinate Sheet	35
Earthwork Cross Sections	36-44
Copy of Plat	45

### Benchmarks

- City of Wichita Disc at Southwest Corner of 135th St. W. & 13th St. N. 30.00± S. of @ 35.00± W. of @ Elev. = 1355.65 NGVD29
- Small Railroad Spike in 2nd HLP W. of 135th St. W. on South Side of 13th St. N., (N. Face of HLP). Elev. = 1359.50 NGVD29
- Small Railroad Spike in 4th HLP W. of 135th St. W. on South Side of 13th St. N., (N. Face of HLP). Elev. = 1366.64 NGVD29



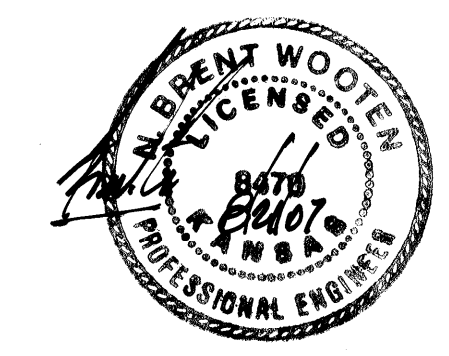
### Vicinity Map

Project Earthwork Totals  
 Excavation = 2,183 C.Y.  
 Loose Fill = 495 C.Y.  
 Compacted Fill = 114 C.Y.  
 Total Project Length  
 3,060 L.F. = 0.58 Miles

Benefit District



Proposed Streets



Baughman Company, P.A. 315 Ellis St. Wichita, KS 67211 P 316-262-7271 F 316-262-0145  
 ENGINEERING | SURVEYING | PLANNING | LANDSCAPE ARCHITECTURE