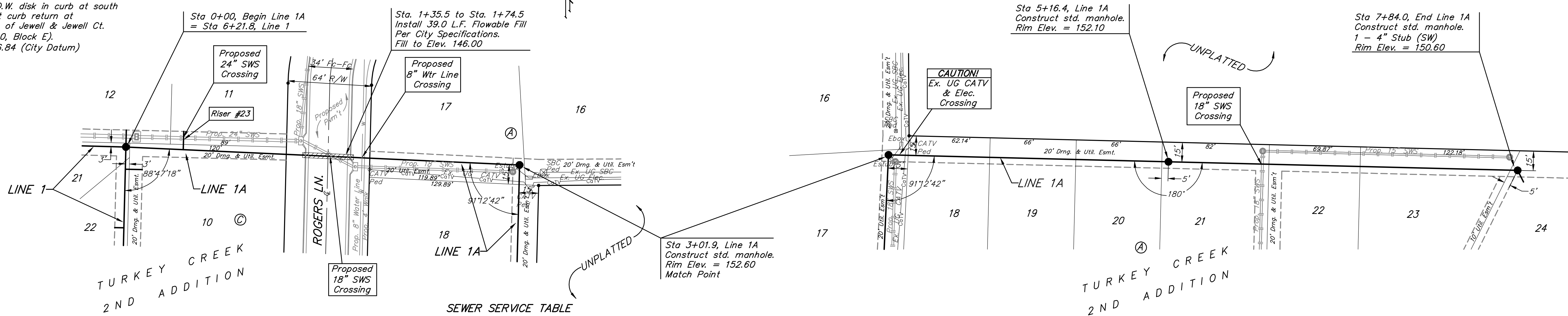


**BENCHMARKS:**  
 BM #1: 119th St. W. & Pawnee  
 City of Wichita Benchmark Disc.  
 NE corner of intersection. 40' E  
 and 30' N of centerline. 59.5' N of  
 power pole @ SE corner of  
 intersection. 156.8' NNE of  
 centerline of E concrete headwall on  
 culvert under 119th St. W.  
 Elev. = 148.68 (City Datum)  
 Elev. = 1336.08 (N.G.V.D.29)

BM #2: C.O.W. disk in curb at south  
 end of east curb return at  
 intersection of Jewell & Jewell Ct.  
 (Lots 48-60, Block E).  
 Elev. = 146.84 (City Datum)

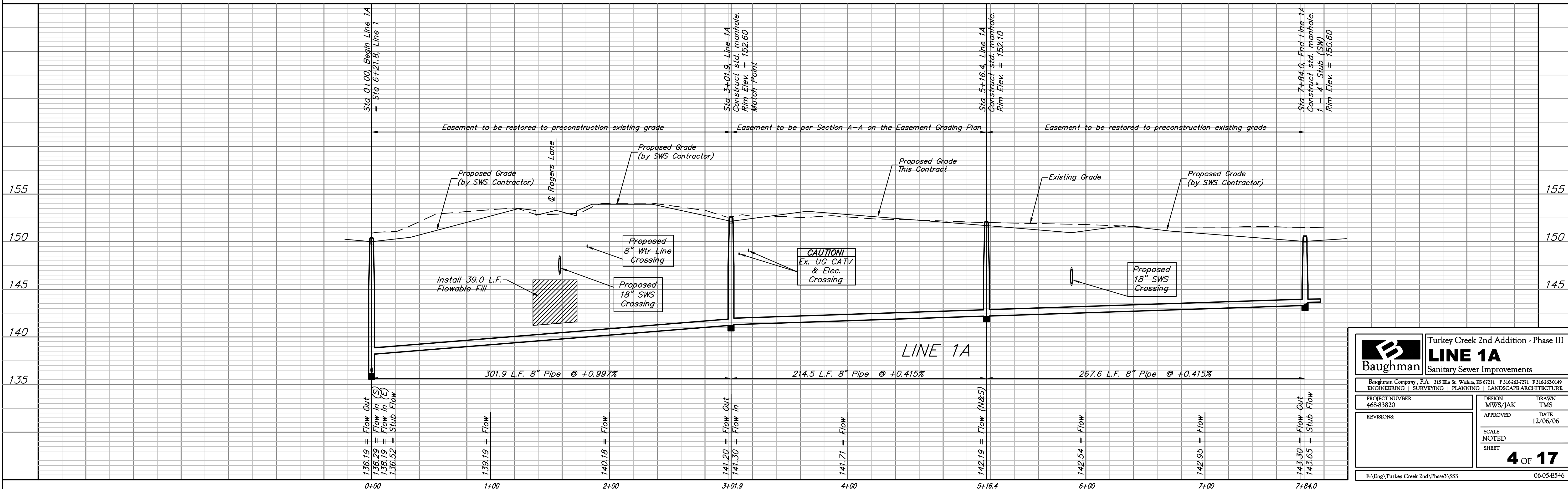
Scale: 1" = 40' Horizontal  
 1" = 5' Vertical  
 • = Iron



SEWER SERVICE TABLE

NUMBER	TYPE	LOCATION			FOR INFORMATION ONLY	
		LOT NO.	BLOCK NO.	LINE NO.	STATION/DIRECTION	APPROXIMATE LENGTH 4" PIPE VERTICAL HORIZONTAL
23	8" X 4" Tee	11	C	1A	0+44/Lt.	7.5' 14'

NOTE: Vertical Riser Pipe shall be extended to 2' minimum above ground water elevation and 4' maximum below proposed ground elevation.



**Baughman** Turkey Creek 2nd Addition - Phase III  
**LINE 1A**  
 Sanitary Sewer Improvements

PROJECT NUMBER: 468-83820  
 DESIGN: MWS/JAK  
 DRAWN: TMS  
 APPROVED: DATE 12/06/06  
 SCALE: NOTED  
 SHEET: 4 OF 17

F:\Eng\Turkey Creek 2nd\Phase3\SS3 06-05-E546