

STA. 3+76.47 LINE 1A=  
N: 19979.62  
E: 20775.20  
1-45° bend

STA. 4+31.67 LINE 1A=  
N: 19994.81  
E: 20828.26  
1-11 1/4° bend.

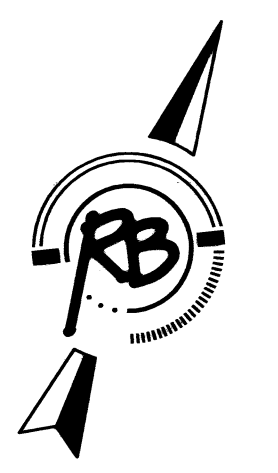
REMOVE PAVEMENT (TO BE REPLACED BY PAVING CONTRACTOR)

**NOTE:**  
\* THESE ITEMS TO BE FURNISHED AND INSTALLED BY THE CITY OF WICHITA DEPT. OF WATER AND SEWER. THE OWNER SHALL REIMBURSE THE DEPT. FOR ALL COSTS OF THE TAP.

STA. 6+01.68 LINE 1A=  
CONNECT TO EXISTING  
8" WATER LINE.  
N: 20075.67  
E: 20977.00  
\*1-8"x8" TAPPING VALVE  
\*1-8"x8" TAPPING SLEEVE  
\*1-6" VALVE BOX  
VALVE BOX ELEV.= 1339.85

1-22.5° bend  
on valve  
5' ditch

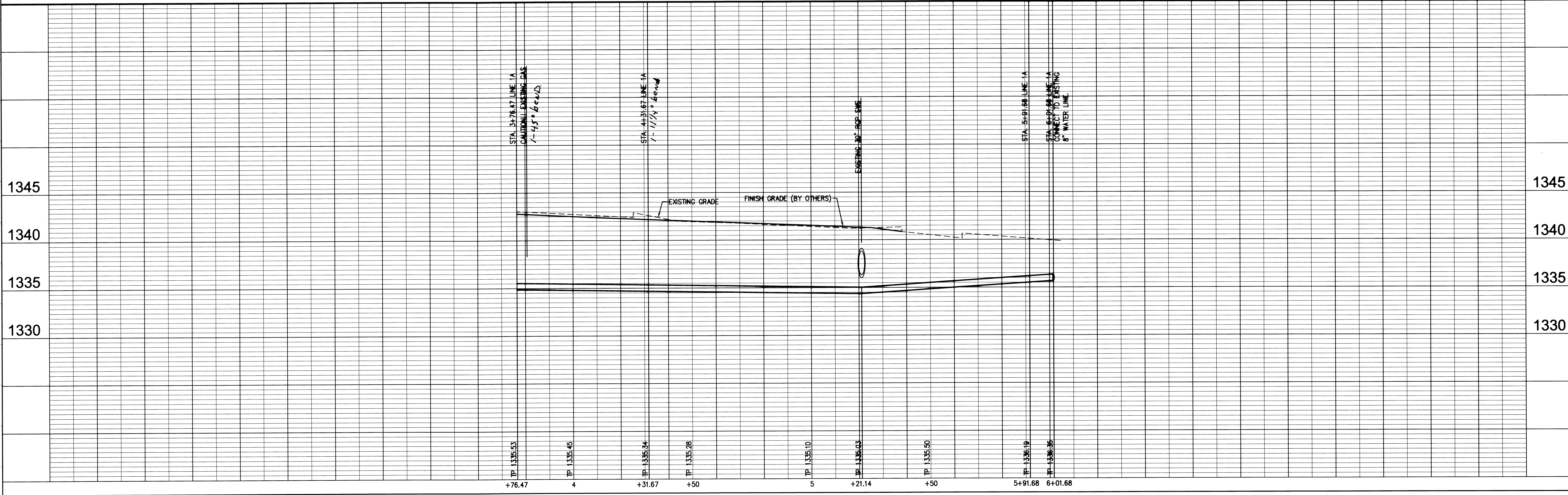
STA. 5+91.68 LINE 1A=  
1-22.5° M.J. BEND (H)  
DEF. 22' 24" 22" RT.  
N: 20074.38  
E: 20967.08



SCALE: 1"=20'  
1"=5' VERT.

Ruggles & Bohm, F.A.  
Engineering, Surveying, Land Planning  
824 North Main  
Wichita, Kansas 67202  
www.rugglesandbohm.com  
Phone: 316.264.4000  
Fax: 316.264.4002

LINE 1A



DESIGN	TCR	PROJECT NUMBER	1290 PPW	REVISION	
UTILITY		DRAWING FILE	ENGINEERING BASE (SWS)	DATE	Feb. 28, 2007
DATE				DRAWN	ELB
				REVIEW	
ANDOVER HIGH SCHOOL WATER PLAN & PROFILE ANDOVER, KANSAS					
RB JOB	2994E				
SHEET	7				