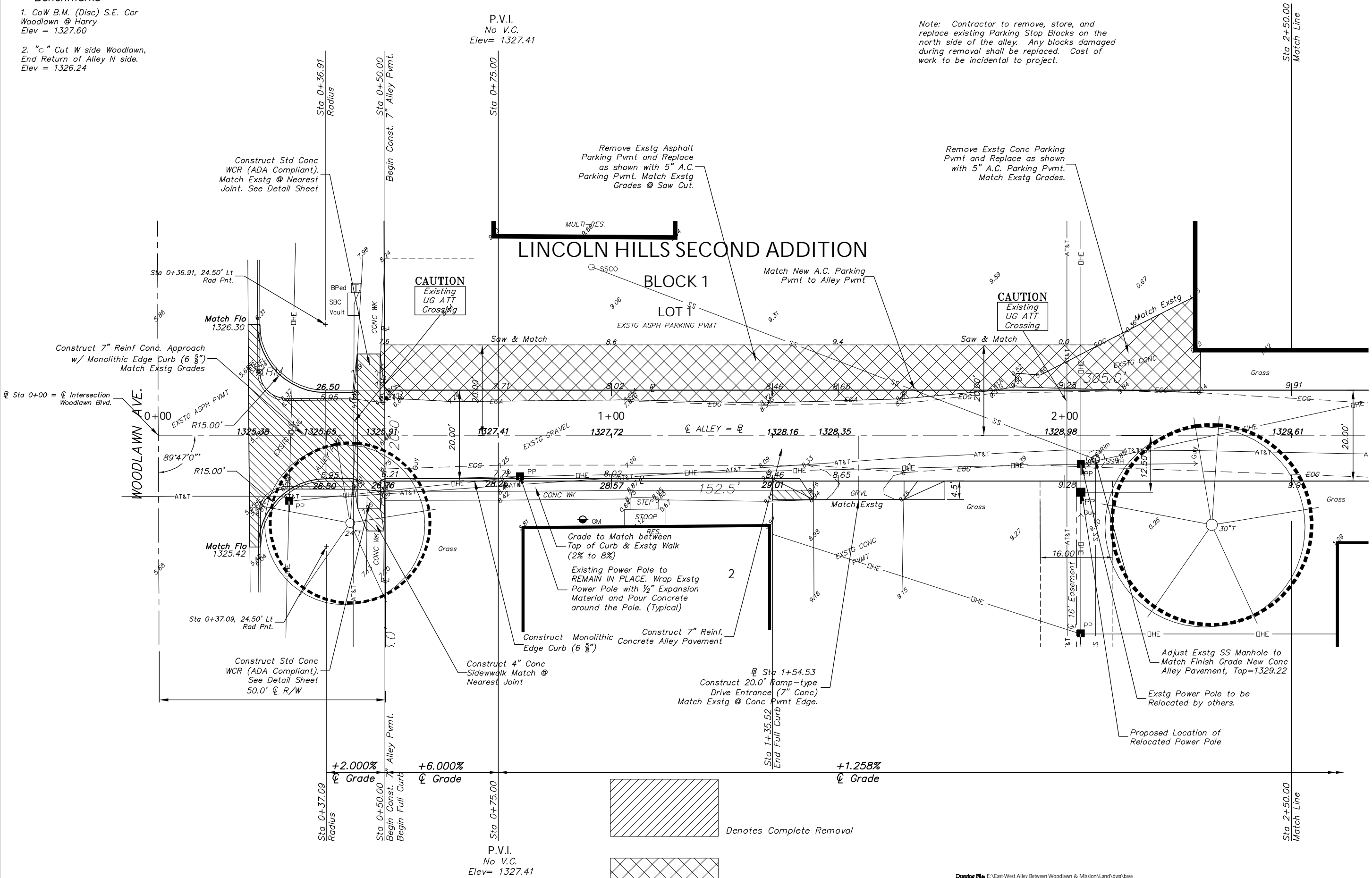


**Benchmarks**

1. CoW B.M. (Disc) S.E. Cor Woodlawn @ Harry  
Elev = 1327.60
2. "c" Cut W side Woodlawn, End Return of Alley N side.  
Elev = 1326.24

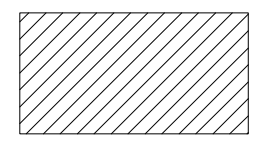
SCALE: 1" = 10'



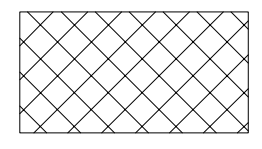
Note: Contractor to remove, store, and replace existing Parking Stop Blocks on the north side of the alley. Any blocks damaged during removal shall be replaced. Cost of work to be incidental to project.

P.V.I.  
No V.C.  
Elev= 1327.41

P.V.I.  
No V.C.  
Elev= 1327.41



Denotes Complete Removal



Denotes Complete Removal & Replacement w/ 5" A.C. Parking Lot Pavement

Drawing File: E:\East West Alley Between Woodlawn & Mission\Land\dwg\base

Design: KK  
Drawn: STAFF  
Approved: JFB  
Scale: 1:10

Project No: 0705E824 CAPITAL IMPROVEMENT PROJECT  
**7" CONCRETE ALLEY PAVEMENT**  
Between Woodlawn and Mission S of Harry  
NW 1/4 Sec 31 T27S R2E - Lincoln Hills Second Addition

**Baughman Company, P.A.**  
315 Ellis St. Wichita, KS 67211 P 3162627271 F 3162620149  
ENGINEERING | SURVEYING | PLANNING | LANDSCAPE ARCHITECTURE

AUGUST, 2007  
SHEET 2 OF 7